

Product datasheet for **RR208458**

Flnb (NM_001107288) Rat Tagged ORF Clone

Product data:

Product Type: Expression Plasmids
Product Name: Flnb (NM_001107288) Rat Tagged ORF Clone
Tag: Myc-DDK
Symbol: Flnb
Vector: pCMV6-Entry (PS100001)
E. coli Selection: Kanamycin (25 ug/mL)
Cell Selection: Neomycin
ORF Nucleotide Sequence: >RR208458 representing NM_001107288
Red=Cloning site Blue=ORF Green=Tags(s)

TTTTGTAATACGACTCACTATAGGGCGGCCGGAATTCGTCGACTGGATCCGGTACCGAGGAGATCTGCC
GCC**CGATCGCC**

ATGCCGGTGACCGAGAAAGACCTGGCGGAGGACGCGCCGTGGAAGAAGATTCAGCAGAACACGTTACGGC
GCTGGTGCACGAGCACCTCAAGTGTGTAACAAACGCATCGGGAACCTGCAGACCGACCTGAGCGACGG
GCTGCGGCTCATCGCGTTGCTTGAGGTGCTCAGCCAGAAGCGCATGCACCACAAGTACCATCAGCGGCC
ACCTTCGACAGATGAAGCTGGAGAATGTGTCTGTGGCTCTGGAGTTCTAGACCAGAAAGCATTAAAGC
TCGTGTCCATTGACAGTAAAGCCATCGTGGATGGGAATCTGAAGCTCATCTTGGGCTGGTATGGACTTT
GATCCTTCACTACTCCATCTCCATGCCCGTGTGGGAAGACGAGGGGGATGATGACGCCAAGAAGCAGACC
CCGAAACAGAGGCTGCTGGGATGGATTGAGAACAAGATCCCATACTTGCCCATCACCAACTCAACCAGA
ACTGGCAAGACGGCAAAGCCTTAGGAGCCCTGGTAGACAGCTGTGCTCCGGTCTGTGCCGGACTGGGA
ATCCTGGGACCCACGAAAGCCGGTGGATAATGCTCGAGAAGCCATGCAGCAGGCCGACGACTGGCTGGC
GTCCACAGGTGATCACGCCGAGGAGATTATCACCCGGATGTGGACGAGCACTCTGTGATGACCTACC
TGTCTCAGTTCGCCAAAGCCAAGCTCAAGCCAGGTGCTCCTCTTAAACCCAAACTCAACCCGAAGAAAGC
CAGAGCCTATGGCAGAGGAATCGAGTCCACTGGAACATGGTGAAGCAGCCAGCCAAATTCACGGTATAG
ACCATCAGCGCTGGACAAGGGGATGTGATGGTGTGTTGTTGAGGACCCAGAAGGAAACAAGGAAGAGGCTC
GTGTGACCCAGACAGTGATAAGAACAAGACATACTCTGTGGAGTATCTGCCAAAGTACCCGGGCTTCA
CAAAGTCATAGTCTGTTGTCAGGACAGCACATTTCCAAGAGCCATTTGAAGTGAACGTTGACAAAGCC
CAAGGAGATGCCAGAAAGTCACTGCTAAAGGCCAGGGTTGGAAACTACAGGGAACATTGCCAATAAGC
CCACCTACTTTGACATCTACACAGCTGGTGTGGTGTGGTGACATTGGCGTTGAGGTAGAGGATCCCCA
GGGCAAGAACAGTGTGGAGCTCCTGGTGAAGACAGAGGCAATCAGGTGTATAGATGTGTCTACAAGCCA
GTGCAGCCTGGCCCCATGTGGTCAAGGTCTCCTTTGCTGGGACGCCATTCCCAAGAGCCCTTTGGTG
TACAAATTGGTGAAGCCTGTAACCCAAATGCTTGCAAGGCCAGTGGCCGAGGCCTGCAGCCAAAGGCGT
CCGGATCCGGGAGACTGCAGACTTAAAGTGGACACCAAGGCGGCTGGAAGCGGAGAGCTTGTGTAACC
GTGAAGGGCCCTAAGGGCCTGGAGGAGCTGGTCAAGCAGAAGGGCTTTCTGGATGGGGTCTACTCGTTTG
AGTACTACCCAGCACACCAGGAAATACAGCATTGCAGTTACTTGGGGGGACACCACATTCCAAGAG
CCCCTTGAAGTCAAGTTGGCCCTGAGGCAGGCATGCAGAAAGTCCGTGCATGGGGCCCTGGACTCCAC



[View online »](#)

GGTGGCATTGTTGGTCGGTCAGCAGACTTTGTGGTGAATCCATTGGTTCTGAGGTCGGGACTCTGGGTT
 TTGCCATCGAAGGTCCTTCCCAGGCAAAAATCGAGTATGACGATCAGAACGATGGCTCATGTGACGTCAA
 ATACTGGCCCAAGGAACCTGGAGAATAAGCCGTTACATCATGTGCGACGACGAAGACATCAAGGACAGC
 CCATACATGGCTTTCATCCATCTGCCACAGGAGACTACAACCCAGATCTAGTCCAAGCATATGGGCCAG
 GTCTGGAGAAAAGTGGTTGTACTATCAACAACCCAGCTGAGTTCATCGTAGATCCTAAGGATGCCGGGAA
 CGCTCCCTTAAAGATACTGGCTCAGGATGGGGAAGGCCAGCCATTGACATCCAGATGAAAAGCCGGATG
 GATGGCACCCTATGTCTGCTCTATACCCCGTCAAAGCTATCAAGCACACCATAGCTGTGGTCTGGGGAG
 GGGTGAACATACCACACAGCCCTACAGGGTCAACATTGGACAAGGTAGCCATCCCCAAAAGGTCAAAAGT
 GTTTGGACCGGGCGTGGAGAGGAGTGGTCTGAAGGCAAACGAGCCTACTCACTTCACAGTGGATTGCACG
 GAGGCTGGGAAGGTGATGTGAGTGGTATCAAGTGTGATGCCCGAGTGTAAAGTGTGATGAGGAAG
 ACGTCGATTTTCGACATTATCACAATGCCAACGACAGCTTACAGTCAAAACGTGCCTCCCGCCCTGG
 GCGATATACTATCAAGTTCTCTTCGCATCGGAGGAAATCCCTGCCAGCCCTTTCAGAGTCAAAGTTGAC
 CCTTCCCATGACGCCAGCAAGGTGAAGGCGGAAGGCCCTGGGTTGAGTAAAGCAGGTGTGAAAAATGGGA
 AGCCGACCCACTTCACTGTTACACCAAGGGAGCCGAAAAGCCCGCTCAATGTGCAGTCTCCAGCCC
 GGTCCCTGGGAGGCAGTGAAGGACTTGGATATCATTGACAATATGACTACTCCCATACTGTTAAATAC
 ACCCAAACCCAGCAGGGCAACATGCAGGTCCTGGTGACTTATGGTGGCGACCCCATCCCCAAAAGTCCTT
 TCACTGTGGGCGTTGCCGCGCCGCTGGATCTGAGCAAGATAAAAAATCAACGGACTAGAAAACAGAGTTGA
 GGTGGGAAGGACCAGGAATTTGCCATTGACACCAACGGGGCAGGAGGCCAGGGGAAGCTGGATGTGACG
 ATCCTGAGCCCTTCTCGGAAGGTGGTGCCATGCTTGGTAGCACCAGTGGCTGGCAGAGAATGCAGCACAG
 CCAAATTCATCCCTCGGAAGAGGGGCTGTTTGTGTAGACGTGACCTATGACGGACACCCAGTGGCCGG
 GAGCCCTACTGTGGAGGCCCTACTGCCACCAGATCCCACCAAGGTGAAGGCCACGGTCTGGCCCTT
 GAAGGAGTCTTGTAGGCAAGCCCGCAGAGTTCACCATTGACACTAAAGGAGCTGGAAGTGGAGTTTGG
 GCCTCACTGTGGAAGTCCGTGTGAGGCCAAAATCGAATGCTCTGATAACGGCGATGGGACCTGCTCCGT
 CTCTTACCTTCCACGAAACCTGGAGAATACTTGTCAACATTCTTTTGAAGAAGTCCATATTCCGGGG
 TCTCCCTTCAAAGCCGACATTGAGATGCCATTTGACCCCTCTAAGTTGTAGCCTCAGGACCAGGACTCG
 AACATGAAAAAGTGGGTGAACCTGGAATCCTTTGCGTTGATTGTTCAGAAGCAGGGCCTGGGACTCTGGG
 CCTTGAAGCGGTCTCAGACTCAGGTGCGAAAGCCGAGGTGTCCATCCAGAACAACAAGATGGCAGCTAC
 GCTGTGACCTATGTGCCTCTGACGGCCGGCATGTACACCCTGACCATGAAGTATGGTGGTGGAGCTGTAC
 CACAATCCCCACCTGGTCAAGGTGGAGCCACCGTCGACACGAGTGGGATCAAAGCCTTTGGGCCAGG
 AATCGAAGGCAAAGATGTGTTCCGGGAGGCCACAACAGACTTCACAGTTGATGCTAGGCCCTTACCCAG
 GTTGGAGGTGACCACATCAAAGCTCACATTGCCAACCCGTGAGGGCCTCAACCGAGTGCTTCGTAAGG
 ACAATGCTGATGGGACCTATCAAGTAGAATACACACCATTGAGAAAGGTTTCCATGTAGTAGAGGTGAC
 ATACGATGATGCGCCATCCCCAACAGCCATTCAAAGTGGCTGTCAATGAAGGTGCCAGCCATCTCGG
 GTCCATGCCAAAGGCCCTGGGCTGAAAGAGGCTTTCACCAACAAGCCTAATGTCTTCACAGTGGTGACCA
 GGGGAGCGGGGATCGGTGGGCTTGGCATCACTGTGGAGGGGCCGTGCGAGTCAAAGATAAACTGCAGAGA
 CAACAAAGACGGCAGCTGCAGCGCGGAGTACATCCCGTTTGCCTGGGGATTACGACGTTAATATCACA
 TACGGAGGCGTCCACATCCCTGGCAGCCCTTTCAGAGTGCCTTCGAAAGATGTGCGTGGATCCCAGCAAGG
 TCAAAATTGCTGGCCCCGGTCTGAGTCTGTGTCGAGCATGCATCCCACAGTCCCTCACGGTGGACAC
 CAGCAAGGCTGGCCTGGCTCCACTGGAAGTGAGGGTCAATGGGCCAAGAGGCCTCGTGGAGCCGGTGGAT
 GTGGTGGATAAATGGGGATGGCACCCACACAGTGACCTACACGCCATCTCAGGAGGGGCCCTACATTGTTT
 CTGTCAAATACGCTGATGAAGAGATCCCCGAAGTCCCTTAAAGTCAAGGTCTTCCCACATACGATGC
 GAGCAAAGTGACCGCCTCCGGGCTGGCCTCAGTGCCTATGGGGTGCCCGCCAGCTTACCTGTGGAGTTT
 GCCATTGATGCCAGAGATGCCGGCGAAGGCCTACTTGTGTCCAGATCACGGACCAAGAAGGAAAGCCTC
 AAAGAGCCACCGTCCACGACAATAAGGATGGCACCTACGCGTTACCTATATCCCTGATAAGACCGGACG
 CTATATGATTGGGGTACCTATGGTGGAGACAACATCCCCTTCTCCTTATCGTATCCGGGCCACGACG
 ACCGGCGATGCCAGCAAGTGTGGCCACAGGTCTGGCATTGCCCCACTGTGAAAAGTGGCGAGGAAG
 TGGGCTTCGTAGTGGATGCTAAGACTGCAGGGAAGGGGAAAGTCACTGCGTGATCCTCACCCAGATGG
 CACGGAGGCTGAAGCTGACGTCAATGAAAATGAAGATGGACCTATGACATTTTCTACACTGCCGCAAG
 CCAGGCACCTACGTGATCTATGTGCGCTTGGTGGCGTTGATATCCCAATAGCCCTTTCACAGTCAATGG
 TTACGGAAGAGGCCTATGTCCCAGTGAAGTACATGAACGGACTAGGCTTCAAGCCCTTGTACTGGTGTGAT
 TCCGTTTGGCGTCAGGAAAGGAGAAAATCACAGGCCAGGTGCATATGCCGCTGGGGAAGAAAGTACCCCT
 GAGATTGTGGACAACAAGGACGGCACGGTCACTGTGAGATATGCCCCACTGAAGTTGGCCTCCACGAGA

TGCACATCAAGTACATGGGCAGCCACATCCCTGAGAGCCCCCTCCAGTTCTACGTGAACTACCCCAACAG
 TGGGAGTGTGTCTGCGTACGGTCCAGGCCTTGTGTATGGAGTAGCCAACAAAACCCACCCTTACCATC
 GTCACGGAGGATGCTGGAGAAGGTGGTCTGGACTTGGCTATTGAAGGGCCCTCAAAGCAGAGATCAGCT
 GCATTGACAACAAAGACGGGACATGTACAGTGACCTACCTGCCACCTTGCCAGGGGACTATAGCATTCT
 GGTCAAGTACAATGACAAGCACATCCCTGGCAGCCCCTTCACTGCCAAGATCACAGATGATAGCAGACGC
 TGCTCCCAAGTGAAGCTGGCTCGGCTGCTGACTTCTTCTGGACATCAGTGAGACCGACCTCAGCACCC
 TGACAGCCAGTATCAAGGCCCATCTGGACGTGATGAGCCCTGTCTGCTAAAGAGACTACCAACAACCA
 CATTGGCATTTCCTTATCCCCGAGAGGTGGTGAACATCTAGTCAGCATCAAGAAGAACGGCAACCAC
 GTGGCCAATAGCCCTGTATCCATCATGGTGGTCCAGTCTGAGATTGGTGTGCACGCCGTGCCAAAGTCT
 ATGGCCGAGGCCTGTCAGAAGGCCGGACTTTCGAGATGTCTGACTTCATCGTGGACACGAGAGATGCAGG
 CTATGGTGGCATATCCTTGGCAGTAGAAGGACCCAGCAAGGTGGACATCCAGACAGAGGACCTGGAGGAC
 GGTACCTGCAAGGTGCTCACTTCCCCTGTGCCTGGGGTCTATATCGTCTCCACAAATTTGCTGACG
 AGCATGTGCTGGAAGCCATTCAGTGTGAAGATCAGCGGTGAGGAAGAGTCAAGGAGAGCATCACCCG
 GACGAGCCGGCTCCATCTGTGGCCACGGTTGGCAGTATCTGTGACCTGAACCTGAAGATCCAGAGATC
 AACAGCAGTGACATGTCTGCCATGTACCAGCCCCTCTGGTCATGTACCGAGGCAGAGATCGTCCCTG
 TGGGAAAGAACTCTCACTGTGTGATTTGTGCCCCAGGAGATGGGCGTCCACACAGTACAGCGTCAAGTA
 CCGTGGACAGCACGTAACAGGAAGCCCCTTCCAGTTCACCGTGGGGCCCCCTTGGAGAAGGGGGTGCCAC
 AAGGTCCGAGCAGGAGGCCCTGGTCTGGAGAGGGGAGAAGCAGGTATCCAGCCGAGTTCAGCATCTGGA
 CCCGGGAAGCAGGTGCTGGTGGCCTCTCCATTGCTGTGCGAGGGCCCTAGTAAGGCCGAGATCACATTCGA
 TGACCATAAAAAATGGGTGATGCGGTGTGCTTATATTGCCAAGAGCCTGGTAACACGAGGTGTCTATC
 AAGTTCACAGTAGACACATCCCTGACAGCCCTTACCTGGTGGCCGTATCGGCCCTCAGACGACGCC
 GCTGCCTCACTGTTCTGAGCCTCAGGAGTCAGGATTAAGTTAACCAGCCAGCATCCTTTGCTATAAG
 GTTGAATGGCGCCAAAGGAAAGATTGACGCAAAGGTGCACAGCCCCTCGGGAGCCGTGGAGGAATGCCAC
 GTGTCTGAAGTGGAGCCAGATAAGTACGCTGTGCGCTTATCCCCATGAGAATGGCATCCACACGATCG
 ACGTCAAATTTAATGGCAGCCACGTGGTGGGAGCCCTTTCAAAGTGCCTGTTGGAGAGCCAGGCCAAGC
 AGGGAATCCTGCTCTGGTGTGCGCTACGGGGTGGGCTTGGAGCAGGTACCACAGGTATCCAGTCAGAA
 TTCTTCATCAACACCACTCAGGCAGGCCCGGGGACTGTCTGTACCATTGAAGGACCATCCAAGGTCA
 AAATGGATTGCCAGGAAATCCCAGAAGGGTACAAAGTCATGTATACTCCCATGGCTCCTGGAAATTACCT
 GATCAGTGTCAAATATGGCGGGCCCAACCACATCTCGAGGAGTCCATTCAAGGCCAAGGTGACAGGCCAA
 CGTCTGGTTACCCAGGCTCAGCCAACGAGACCTCGTCCATCTTGGTGAATCAGTAACCAGATCCTCAA
 CGGAAACATGCTATAGCGCCATCCCAAGTCGTCTCAGATGCCAGCAAAGTGACCTCAAGGGGGCGGG
 GCTGTCAAAGGCCTTTGTGGGCCAGAAGAGTTCCTTCTGGTGGACTGCAGCAAAGCTGGGTCCAACATG
 CTGTTGATTGGGGTCCATGGGCCACCACCCCTGTGAAGAGGTCTCCATGAAGCACGTGGGCAAGCAAC
 AGTACAATGTCACATACGTTGTCAAGGAGAAGGGAGATTACGTTCTGGCTGTGAAGTGGGGGAAGAGCA
 CATCCCCGGTAGCCCTTTCATGTCACTGTGCCT

ACGCGTACGCGGGCCGCTCGAGCAGAACTCATCTCAGAAGAGGATCTGGCAGCAAATGATATCCTGGATT
 ACAAGGATGACGACGATAAGGTTTAA

Protein Sequence: >RR208458 representing NM_001107288
 Red=Cloning site Green=Tags(s)

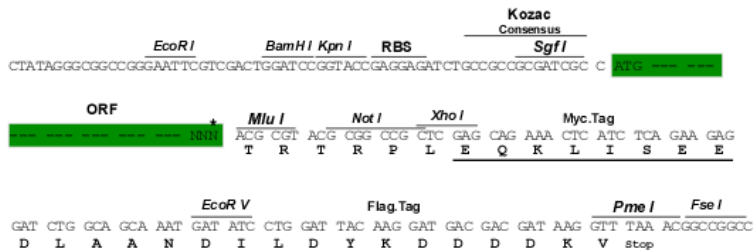
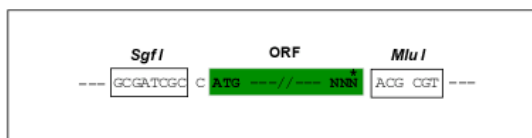
MPVTEKDLAEDAPWKKIQNTFTRWCNEHLKCVNKRIGNLQTDLSGLRLIALLEVL SQRMHKHYHQRP
 TFRQMKLENVSVALEFLDHESIKLVSIDSKAIVDGNLKLILGLVWTLILHYSISMPVWEDEGDDAKKQT
 PKQRLLGWIQNKIPYLPITNFNQNWQDGKALGALVDSAPGLCPDWESWDPRKPVNDAREAMQQADDWLG
 VPQVITPEEIIHPDVDEHSVMTYLSQFPKAKLKPGLPKLNPKKARAYGRGIESTGNMVKQPAKFTVD
 TISAGQGDVMVFVEDPEGNKEEARVTPDSDKNKTY SVEYLPKVTGLHKVI VLFAGQHISKSPFEVNVDKA
 QGDASKVTAKGPLETTGNIANKPTYFDIYTAGAGVGDIGVEVEDPQGKNSVELLVEDRGNQVYRCVYK
 LQPGPHVVKVSFAGDAIPKSPFVQIGEACNPACRASGRGLQPKGVRIRETADFKVDTKAAGSGELAVT
 VKGPKGLEELVKQKGLDGVYSFEYYPSTPGKYSIAVTWGGHHIPKSPFEVQVGP EAGMQKVRWGPGLH
 GGIVGRSADFVVEISIGSEVGTGFAIEGPSQAKIEYDDQNDGSCDVKYWPKEPGEYAVHIMCDEDEDKDS
 PYMAFIHPATGDYNDLVQAYGPLEKTGCTINPAEFIVDPKDAGNAPLKILAQDGEQPIDIQMKS
 RMDGTYYCSYTPVKAIKHTIAVWGGVNIHSPYRVNIGQGSHPQKVKVFGPGVERSGLKANEPHTFTV
 DCTEAGEGDVSVGIKCDARVLSDDDEEDVDFDIHNDTFTVKYVPPAPGRYTIKVLFASEEIPASPF
 RVKVDPSHDASKVKAEGPGLSKAGVENKPTHTFVHTKGAGKAPLNVQFSSPVPGEAVKDLDI
 IDNYDYSHTVKYTPPTQQGNMQVLVTYGGDPIPKSPFTVGVAAPLDL SKIKINGLENRVEVGKDQEF
 AIDTNGAGGQGLDVTILSPSRKVVVCLVAPVAGRECSTAKFIPREEGLFAVDVTDGHPVPGSPY
 TVEASLPPDPTKVKAHGPGLEGLVKGPAEFTIDTKGAGTGGLGLTVEGPCEAKIECSNDG
 DGTCSVSYLPTKPGYEYFVNILFEEVHIPGSPFKADIEMPFDPSKVVASGPGLEHGKVG
 EPGILCVDCSEAGPGTLGLEAVSDSGAKAEVSIQNNKDGSAVTVYVPLTAGMYLTMKYG
 GELVPQFPVWVKEPTVDTSGIKAFGPGIEGKDFREATDFTVDARPLTQVGGDHIAHIANP
 SGASTECEFKDNADGTYQVEYTPFEKGFHVVEVYDDAIPNSPFKVAVNEGCQPSR
 VHAQGPGLKEAFNKNPVFTVTRGAGIGGLGITVEGPSESKINCRDNKDGSCSAEYIPFAPG
 DYNITYGGVHIPGSPFRVPSKDVDPKVKIAGPGLSSCVRACIPQSFTVDTSKAGLAPLEVR
 VMGPRGLVEPVDVVDNGDGHTVTYTPSQEGPYIVSVKYADEEIPRSPFKVKVLPYDASKV
 TASGGLSAYGVPASLPVEFAIDARDAGEGLLAVQITDQEGKQQRATVHDNKDGTAVTYIPDKT
 GRYMIGVTYGGDNIPLSPYRIRATQTGDASKCLATGPGIAPT VKTGEEVGFVDAKTAGK
 GKVTCVILTPDGTEAEADVIENEDGTYDIFYTAAKPGTYVIYVRFGGVDIPNSPFTVM
 VTEEAYVPVSDMNGLGFKPFDLVIPFAVRKGEITGQVHMPSGKKATPEIVDNKDGTV
 TVRYAPTEVGLHEMHIKYMGSHPESPLQFYVNYPNSSGVSAYGGLVYG VANKTATFTI
 VTEDAGEGLDLAIEGPSKAEISCIDNKDGTCTVTYLPTLPGDYSILVKYNDKHIPGSP
 FTAKITDSSRSCSQVKLGSAADFLLDISETDLSTLTASIKAPSGRDEPCLLKRLPNNHIGI
 SFIPREVGEHLVSIKKNGNHVANSPVSI MVVQSEIGDARRAKVYGRGLSEGRTFEMSDF
 IVDTRDAGYGGISLAVEGPSKVDIQTELEDGTCKVSYFPTVPGVYIVSTKFADEHVP
 GSPFTVKISGEGRVKESITRTRSAPSVATVGSICDLNLKIPEINSSDMSAHVTSPSGH
 VTEAEIVPVGKNSHCVRFPQEMGVHTVSVKYRGQHVTVGSPFQFTVGPLGEGGAH
 KVRAGGPGLERGEAGIPAEFSIWTREAGAGGLSIAVEGPSKAEITFDDHKNKSGCVS
 YIAQEPGNYEVSIFNDEHIPDSPYLVPVIAPSDARCLTVLSLQESGLKVNQPA SF
 AIRLNGAKGKIDAKVHSPSGAVEECHVSELEPKYAVRFIPHENGIHTIDVKFNGSH
 VVGSPFKVRVGEPPQAGNPALVSAYGAGLEAGTTGIQSEFFINTTQAGPGTLSVT
 IEGPSKVKMDCQEIPEGYKVMYTPMAPGNYLISVKYGGPNHISRSPFKAKVTGQ
 RLVTGPSANETSSILVESVTRSSSTETCYS AIPKSSSDASKVT SKGAGLSKAFVGQK
 SSFLVDCSKAGSNMLLIGVHGPTTPCEEVSMKHVKGQQYNVTYVVKEGDYVLAVK
 WGEHHPGSPFHVTVP

TRTRPLEQKLI SEEDLAANDILDYKDDDDKV

Restriction Sites: SgfI-MluI

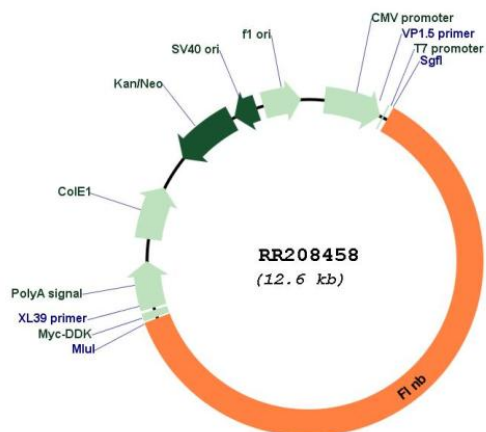
Cloning Scheme:

Cloning sites used for ORF Shuttling:



* The last codon before the Stop codon of the ORF

Plasmid Map:



ACCN: NM_001107288

ORF Size: 7734 bp

OTI Disclaimer:

The molecular sequence of this clone aligns with the gene accession number as a point of reference only. However, individual transcript sequences of the same gene can differ through naturally occurring variations (e.g. polymorphisms), each with its own valid existence. This clone is substantially in agreement with the reference, but a complete review of all prevailing variants is recommended prior to use. [More info](#)

OTI Annotation:	This clone was engineered to express the complete ORF with an expression tag. Expression varies depending on the nature of the gene.
Components:	The ORF clone is ion-exchange column purified and shipped in a 2D barcoded Matrix tube containing 10ug of transfection-ready, dried plasmid DNA (reconstitute with 100 ul of water).
Reconstitution Method:	<ol style="list-style-type: none">1. Centrifuge at 5,000xg for 5min.2. Carefully open the tube and add 100ul of sterile water to dissolve the DNA.3. Close the tube and incubate for 10 minutes at room temperature.4. Briefly vortex the tube and then do a quick spin (less than 5000xg) to concentrate the liquid at the bottom.5. Store the suspended plasmid at -20°C. The DNA is stable for at least one year from date of shipping when stored at -20°C.
RefSeq:	<u>NM_001107288.1</u> , <u>NP_001100758.1</u>
RefSeq Size:	8861 bp
RefSeq ORF:	7737 bp
Locus ID:	306204
Cytogenetics:	15p14
MW:	275.3 kDa