

Product datasheet for **RR208414**

Cilp2 (NM_001107307) Rat Tagged ORF Clone

Product data:

Product Type: Expression Plasmids
Product Name: Cilp2 (NM_001107307) Rat Tagged ORF Clone
Tag: Myc-DDK
Symbol: Cilp2
Vector: pCMV6-Entry (PS100001)
E. coli Selection: Kanamycin (25 ug/mL)
Cell Selection: Neomycin
ORF Nucleotide Sequence: >RR208414 representing NM_001107307
Red=Cloning site Blue=ORF Green=Tags(s)

TTTTGTAATACGACTCACTATAGGGCGGCCGGGAATTCGTCGACTGGATCCGGTACCGAGGAGATCTGCC
GCCCGATCGCC

ATGTCGTACCTCTGCCCTTGCTCTATCTCTGCATCGCTGCCGCACACCTAGCGGGAGCGGAGATGCCA
CCCCACCGAGGAGCACACTGCAACCGTCAGGGGTCTTCAGGGACGGCCACCAGACCCCGCCAGCCCTC
GCCGGCCCTGGAGGACTGGGAGGAGGCCAGCGAGTGGACCTCGTGGTTCAACGTGGACCACCCGGGAGGA
GATGGTGACTTCGAGAGCCTGGCAGCCATTCGCTTCTACTATGGTCCCGCGCGCTGTGCCCGAGGCCGC
TGGCACTGGAGGCGCGCACCCAGGACTGGGCACTACCCGCTGCAATAGGCGAGAGGGTGCACGCCAACCC
AGAGCGCGGATTCTGGTGTCTTAATCGCGAGCAGCCGCGAGGCCCGCTGCTCCAACCTACCACGTGCGC
TTCCGCTGCCACTGGATCCACCTTATCTCCCTCCTTGCTCTGCAGAGCGGCATGGGGCGCTTGGGGCG
CTTGGGGCTCTGTTCCAAGAGTTGCGGGCCAGGCCGTCGCTGCGCCGTGCGAGCTGTCAAAGCTCATC
TGGGGACACATGCTCTGGGAGCCCCAGGAGGCACAGAAGTGCCTGAGATCCCGTTGCCAGCTCCCCC
AAGAGTTCTCTGCCCCCTGCTGCTCCCATGTTCCCTAGGATGTAGCTCTGACACCTGCGGGTGCCCA
ACCACATCCTCTTGGGCTCGGTGGTCACCCCATCTGGGCGACCGCTGTCAGGAGCCAGGGTCTCCCTGCG
AACACGACCTGGCACCGTAGCCACCAGTGACCCCATGGAACCTTCCGGGTGCCTGGAGTCTGCGCTGGC
AGCAAGGCCAACGTCAGTGCCCGGATGAATGGTCTCTACTGGTACAGCCCAGGCCATGCCAACACCT
CCAACCTGCTGTGGTACCATCGTCTTGAAGAGTTAGGGAAGCCGTACCTGGTAAAGCACCTGAGTC
TCGAGTTGAGAGGCAGGTGAGAATGTGACCTTCTGCTGCAAGGCCTCTGGGACACCCATGCCAAAGAAA
TATTCCTGGTCCACAACGGGACCTTACTGGACCAGCCAGCAGGGGTCTGGGCCACACCTAGAGCTCC
AGGGGCTTCGTGAGGAGCAGGCAGGGGAGTACCACTGCAAAGCCTGGAACGAGGCCGGCACCGTGGCAGC
CCGCGCTGCCACCTCACGGTGTCTGCTCCCGCCAGCCAGCCTGTGACCCCGACCTCAGGAACACCTG
ATCAAGTTCCGGATGACTGCGGCCAGCCGGGTGGCGGCCACCTAGACGTGGGACTGTGCCAG
ACACGCGCTGCCCGGCCCGCTGGGCTCCGGCCCGCGCTGTGGGACGCGGGCTCTGCTGCTGCTCAGT
GCTGCGCCTGGAGAGCAGAGATATCCGCTGCTCTGGCTATGTGCTCCAGTGAAGGTGGTGGCTGAGTGT
GGCTGTGCAAGTGCCTGCCCGTAGGGGATTGGTGCAGGCCCGGTGGTGGCTGCGGACTCTGGGGAGC
CCCTGCGTTTCGCCAGGATTCTATTGGGCTTGCACCCATCGGCTTACCTCCTACCAGGGCGACTTAC
CATCGAGGTGCCCGGCCACCGAGCGCCTCGTGGTGACCTTCTGGACTCGAGTGGTGGTTCGTGGAC



[View online »](#)

AGCATCCGCGTGTTCCTTTTCGACCCTCGCGGCGCTGGTGTGTACCACGAGATCCGCGTGTGCGCAAGG
 CGGCCGACGTGCTGCTGGACGCGGAGCAGGGCGGTGAAATTCGCGTGGCGGCACAGAGGAGCGCCAGC
 GCTAGGCGAGCTAGTCTTCCCGCCCCGACCTTCCACCACCCGACGCGCCGTCCTACTCGGGGCCCGTG
 GAGGCGGTGTACCTTCGTGGACCCTCGTGACCTGGCGTCGCGCGCCGCGGCGTCCAGCGACCTGCGCT
 ACCTGGATAGCTCGGGTGAAGTGGCGCCGCTGCGCACCTATGGCATGTTTGCAGTGGACCTGCACGCGCC
 AGGCTCCACCCAGCAGCTGCACGTGGCGCGCGGACGTGCGCGTGGACGCCACCACGTGCGCATGCC
 GGACACGCCGATGCTCTGGCACTCTGGTCTGGTGGACCCAGAGACCGGCCCTGTGGAGGAGGAGGGGCTG
 AGCAGGGAGGAGCGGCTTCCGCGGTGAGAAGGAGGCGGTGCGCGTGCAGAGGGAGGAGCGCATGTTCTCT
 CGTGGGCGCGCTCACGGTGCAGGAGCGCGCTTATTCAACCTAGACGTGCCGAGCGCGCGCTGCTTC
 GTGAAGTTTCGCGCTACGGTACAGATCGCTTCGCGCCCTCAGAGCAGGTGCAGGGCGTGGTGGTACGC
 TGCTCAATCTGGAACCCGCGCCGTTTTCAGGCCAACCCACGCGCGTGGGGCGCTTCGACAGCGCGGT
 CACAGGGCCAAACGCGCGTGCCTGCCGCTTCTGCGACCGGAGCGGCCGACGCTACACGGCTTC
 GTGACCGCTCTAGGAGGCGAGGAGTGGAGGCGCGCGTGCAGGCCACGCGGACCGCGGCCACCG
 TGGCGTGGCAGAGCCCTACCTGGAGCGCTCGGCTACCAGCGCACCGATCACGACGACCCCGCGCTCAA
 GCGACCCGCTTCCGCTTGAACCTTGCAGTCCACGACGGGCCACGAGTCCGAGCGCACGGGCCCGTG
 TATCCGTGGCGCGCTGCGGACTGCGAGGACGCGCGGTACCAGACAGTCACTCCGATTCTCGCGCG
 TAGAGGACAGCAAGTACGAGTACGACGTGGTGCATTCCACGAGGGAGCGCCCGCTCGTGGACAGGCGA
 CCTGCTGGCTGGTGGCCAAACCCGAGGATTCGAGCGTGTCTCTGAAGTGCAGGCGTGCAGGGCCCC
 CAGGAGTACATGGTGCCTTCGCAACAACGCGGGCGCACCCACGAAGACACGCGCGCCACCTCTATGGG
 TGCGGACACTCGCAGCGTGCACAACCTGAGCGCCCGGGCGCTCGGCCGCTGCGTGGAGTTTAAAGT
 CGGTGGCATGCTGTTGACCAGCGCAAGTGGACAGGACTGTTGACTGTGACCCCGCAGGGCAGCTGC
 CGCCGCGTGGCCGTAACACGCTCCTGCAGGACTATCTAGCCCGCACCCCGCTCGCCCCGCGGACG
 ACCCGCCACCTTCGCCATGCTGGTCCGCTTACGCGCTGGGCCACAACCTATGGTGTCTACACCGCTAC
 CGACAGAGCCACGCGTGGCCAAGGAAATCGCCATCGGCGCTGCTTCGACGGCTCCTCGGACGGCTTC
 TCCCGGAGATGAAGGCGGACGCGGACACGCGTTACCTTCCAGTGCAGAGCGCGCCGACAGCCCA
 GCCTCTCCAGAGGCTGCTGGAGAACCAGCATCGGCGCTTGGCGACATTCGTAGGGAGATGGGCCAAGC
 CGCCCGGATTCCCGGTTACCCAAACCCAGGCTGGGGACACCGGCCCTTCGGTCTGGACAG

ACGCGTACGCGGCGCTCGAGCAGAACTCATCTCAGAAGAGGATCTGGCAGCAATGATATCCTGGATT
 ACAAGGATGACGACGATAAGGTTTAA

Protein Sequence:

>RR208414 representing NM_001107307
 Red=Cloning site Green=Tags(s)

MSSPLLLYLCAAAHLAGARDATPTEEHTATVRGLQGRPPDPGQPSPALEDWEEASEWTSWFNVDPHGG
 DGFESLAAIRFYYPARVCPRLALEARTTDWALPAAIGERVHANPERGFWCLNREQPRGRCSNYHVR
 FRCPLDPPYLPPCSAEAAWGAWGLCSKSCGPGRRLRRRSCQSSGDTCPGSPQEAQKCVRSRCPAPP
 KSSLCPCCSHVPLGCSSDTCGCPNHILLGSVVTSPGRPLSGARVSLRTRPGTVATSDTHGTRVPGVCAG
 SKANVSARMNGFSTGTAQAHANTSNSAVVTIVLEELGKPYLVKHPESRVREAGQNVTFCKASGTPMPKK
 YSWFHNGTLLDRRQQGSQPHLELQGLREEQAGEYHCKAWNEAGTVRSRAAHLTVLAPGQPACDPRPQEH
 IKLPDDCGQPGGPTYLVDVGLCADTRCPGVPVSGPRCGDAGSRCCSVLRLESRDIRCSGYVLPVKVVAEC
 GCRKCLPRRGLVRGRVVAADSGEPLRFARILLGLAPIGFTSYQGDFTIEVPPATERLVVTFVDSSEGFVD
 SIRVLPFDPRGAGVYHEIRVLRKAAAVLLDAEQGGEIPLGGTEEPALGELVFPRTFHHPDGRPYSGPV
 EARVTFVDPDLASAAAASDLRYLDSSGELAPLRTYGMFAVDLHAPGSTEQLHVARADVRVDADHVRMP
 GHADALWLDLPETGLWEEEGAEQGGGFRREKEAVRVRREERTFLVGALTVRERRLFNLDVPERRRCF
 VKVRAYGTDRFAPSEQVQGVVTLNLEPAPGFTANPRAWGRFDSAVTGPNGACVPFCDPAPDAYTAF
 VTASLGEELEAAPSRRPRATAATVGVAEPLYLERLGYQRTDHPDALKRTGFRLNLRPRTGHESEAHGPV
 YPWRRLRDCEADAPVTDShFRFSRVEADKYEYDVVPHFEGAPASWTGDLAWWPNPQEFACFLKVRLLQGP
 QEYMYRSHNAGGTHEDTRGHLYGLRDTRSVRNPFRPGASAAVEFKCGMLFDQRQVDRTLVTVTPQSGC
 RRVAVENTLLQDYLARHPPLAPADDPATFAMLAPLDALGHNYGVYVTDQSPRLAKEIAIGRCFDGSSDGF
 SREMKADAGTAVTFQCREPPARPSLFQRLLENPASALGDIRREMGQAARDSRVTTQAGDTGPFSGSQ

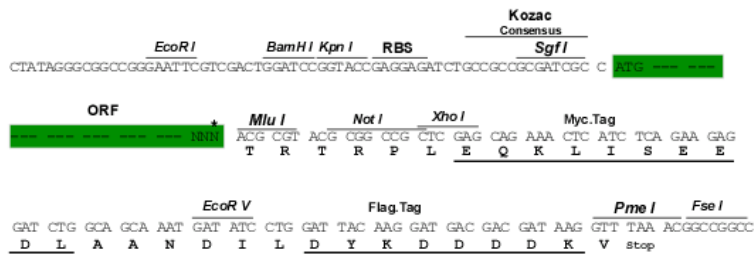
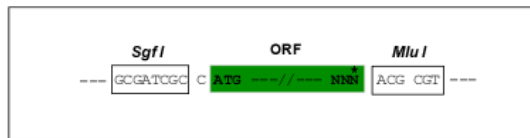
TRTRPLEQKLISEEDLAANDILDYKDDDDKV

Restriction Sites:

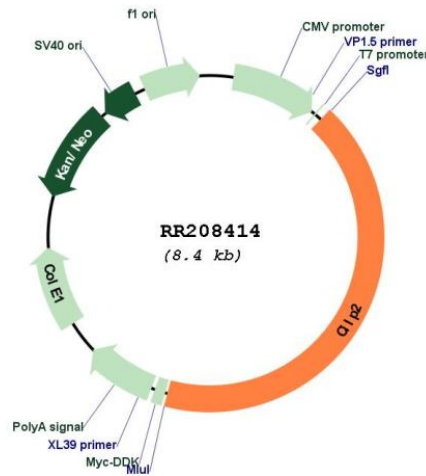
Sgfl-MluI

Cloning Scheme:

Cloning sites used for ORF Shuttling:



* The last codon before the Stop codon of the ORF

Plasmid Map:


ACCN: NM_001107307

ORF Size: 3564 bp

OTI Disclaimer: The molecular sequence of this clone aligns with the gene accession number as a point of reference only. However, individual transcript sequences of the same gene can differ through naturally occurring variations (e.g. polymorphisms), each with its own valid existence. This clone is substantially in agreement with the reference, but a complete review of all prevailing variants is recommended prior to use. [More info](#)

OTI Annotation: This clone was engineered to express the complete ORF with an expression tag. Expression varies depending on the nature of the gene.

Components: The ORF clone is ion-exchange column purified and shipped in a 2D barcoded Matrix tube containing 10ug of transfection-ready, dried plasmid DNA (reconstitute with 100 ul of water).

Reconstitution Method:

1. Centrifuge at 5,000xg for 5min.
2. Carefully open the tube and add 100ul of sterile water to dissolve the DNA.
3. Close the tube and incubate for 10 minutes at room temperature.
4. Briefly vortex the tube and then do a quick spin (less than 5000xg) to concentrate the liquid at the bottom.
5. Store the suspended plasmid at -20°C. The DNA is stable for at least one year from date of shipping when stored at -20°C.

RefSeq: [NM_001107307.1](#), [NP_001100777.1](#)

RefSeq Size: 4081 bp

RefSeq ORF: 3567 bp

Locus ID: 306356

Cytogenetics: 16p14

MW: 128.9 kDa