

Product datasheet for **RR208409**

Serpina6 (NM_001009663) Rat Tagged ORF Clone

Product data:

Product Type: Expression Plasmids
Product Name: Serpina6 (NM_001009663) Rat Tagged ORF Clone
Tag: Myc-DDK
Symbol: Serpina6
Synonyms: Cbg
Vector: pCMV6-Entry (PS100001)
E. coli Selection: Kanamycin (25 ug/mL)
Cell Selection: Neomycin
ORF Nucleotide Sequence: >RR208409 representing NM_001009663
Red=Cloning site Blue=ORF Green=Tags(s)

TTTTGTAATACGACTCACTATAGGGCGCCGGAATTCGTCGACTGGATCCGGTACCGAGGAGATCTGCC
GCC**GCGATCGCC**

ATGTCACTCGCCCTGTATACCTGCCTCCTCTGGCTCTGCACCAGTGGCCTCTGGACTGCCAAGCCAGCA
CTAATGAGAGTTCAAATCTCACCGAGGCTGGCTCCCACCAATGTTGACTTTGCCTTCACTTGTACCA
ACGCCTAGTGGCCCTAAATCCAGACAAGAACACCTTAATCTCCCCAGTGAGCATCTCCATGGCTCTGGCC
ATGGTATCCCTTGGCTCTGCCAGACTCAGTCTCTCCAGAGTCTAGGCTTCAACCTCACAGAGACCTCTG
AAGCTGAGATCCACCAGAGTTTCCAGTACCTCAATTACCTTCTCAAGCAGTCCGATACTGGCTTAGAGAT
GAACATGGGCAATGCCATGTTCTCCTCCAGAAGCTGAAGCTGAAGGACTCGTTCTTAGCAGACGTCAAA
CAATACTATGAGTCAGAGGCCTTGGCCATCGATTTGAGGACTGGACTAAAGCCAGCCAACAGATCAACC
AGCATGTCAAGGATAAGACACAGGGGAAAATTGAGCATGTGTTCTCAGACCTGGATAGTCCAGCCTCCTT
CATCCTGGTCAACTACATCTTCTCAGAGGCATATGGAACTTCCCTTCCAGCCAGAAAACTAGAGAG
GAGGACTTCTATGTGAATGAGACAAGCACCGTGAAGGTGCCATGATGGTCCAGTCAGGCAGCATGGTT
ACTTTCGTGACTCAGTCTTCCCCTGCCAGCTGATACAGATGGACTATGTGGGAAATGGAAGTGCCTTCTT
CATTCTTCCAGACCAGGGCCAGATGGACACTGTCATCGCTGCACTTAGTCGGGACACAATTGATAGGTGG
GGCAAGCTTATGACCCCAAGGCAGGTGAACCTATACATCCCGAAATCTCCATATCTGATACCTATGACC
TAAAGACATGCTGGAAGACCTGAACATTAAGGACTTGCTCACCAACCAATCAGATTTCTCAGGCAACAC
CAAAGATGTTCCCTTGACATTAACGATGGTCCACAAGGCCATGCTACAAGTGAAGGGAATGTGTTG
CCTAATTCTACCAACGGGGCTCCCCTACACCTGCGCTCTGAACCCTTGACATCAAGTTCAACAAGCCCT
TCATCCTCTGCTCTTTGACAAGTTCACATGGAGCAGCCTGATGATGAGCCAAGTGGTCAATCCAGCC

ACGCGTACGCGGCCGCTCGAGCAGAAACTCATCTCAGAAGAGGATCTGGCAGCAAATGATATCCTGGATT
ACAAGGATGACGACGATAAGGTTTAA



[View online »](#)

Protein Sequence: >RR208409 representing NM_001009663
 Red=Cloning site Green=Tags(s)

MSLALYTCLLWLCTSGLWTAQASTNESSNSHRGLAPTNVDFAFNLYQRLVALNPKNTLISPVSISMALA
 MVSLGSAQTQSLQSLGFNLTETSEAEIHQSFQYLYNLLKQSDTGLEMNMGAMFLLQKLLKDSFLADVK
 QYYESEALAIQDFEDWTKASQQINQHVKDKTQGKIEHVFSDLSPASFILVNYIFLRGIWELPFSPENTRE
 EDFYVNETSTVKVPMVMVQSGSIGYFRDSVFPCQLIQMDYVGNGTAFFILPDQGMQMDTVIAALSRDTIDRW
 GKLMTPRQVNLVYIPKFSISDITYDLKDMLEDLNIKDLLTNQSDFSGNTKDVPLTLTMVHKAMLQLDEGNVL
 PNSTNGAPLHLRSEPLDIKFNKPFILLFLDKFTWSSLMMSQVVNPA

TRTRPLEQKLISEEDLAANDILDYKDDDDKV

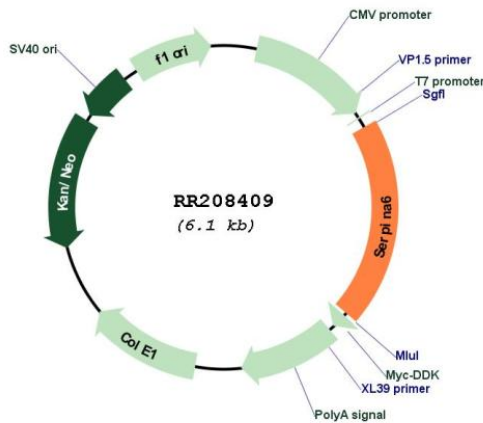
Restriction Sites:

Sgfl-MluI

Cloning Scheme:



Plasmid Map:



ACCN: NM_001009663

ORF Size:	1188 bp
OTI Disclaimer:	The molecular sequence of this clone aligns with the gene accession number as a point of reference only. However, individual transcript sequences of the same gene can differ through naturally occurring variations (e.g. polymorphisms), each with its own valid existence. This clone is substantially in agreement with the reference, but a complete review of all prevailing variants is recommended prior to use. More info
OTI Annotation:	This clone was engineered to express the complete ORF with an expression tag. Expression varies depending on the nature of the gene.
Components:	The ORF clone is ion-exchange column purified and shipped in a 2D barcoded Matrix tube containing 10ug of transfection-ready, dried plasmid DNA (reconstitute with 100 ul of water).
Reconstitution Method:	<ol style="list-style-type: none">1. Centrifuge at 5,000xg for 5min.2. Carefully open the tube and add 100ul of sterile water to dissolve the DNA.3. Close the tube and incubate for 10 minutes at room temperature.4. Briefly vortex the tube and then do a quick spin (less than 5000xg) to concentrate the liquid at the bottom.5. Store the suspended plasmid at -20°C. The DNA is stable for at least one year from date of shipping when stored at -20°C.
RefSeq:	NM_001009663.1 , NP_001009663.1
RefSeq Size:	1489 bp
RefSeq ORF:	1191 bp
Locus ID:	299270
UniProt ID:	P31211
Cytogenetics:	6q32
MW:	44.7 kDa
Gene Summary:	Major transport protein for glucocorticoids and progestins in the blood of almost all vertebrate species.[UniProtKB/Swiss-Prot Function]