

Product datasheet for **RR208386**

Psmb7 (NM_053532) Rat Tagged ORF Clone

Product data:

Product Type: Expression Plasmids
Product Name: Psmb7 (NM_053532) Rat Tagged ORF Clone
Tag: Myc-DDK
Symbol: Psmb7
Synonyms: Z
Vector: pCMV6-Entry (PS100001)
E. coli Selection: Kanamycin (25 ug/mL)
Cell Selection: Neomycin
ORF Nucleotide Sequence: >RR208386 representing NM_053532
Red=Cloning site Blue=ORF Green=Tags(s)

TTTTGTAATACGACTCACTATAGGGCGCCGGAATTCGTCGACTGGATCCGGTACCGAGGAGATCTGCC
GCC**CGATCGCC**

ATGGCGGCTGTGTCGGTGTTCAGGCACCGGTCGGAGGCTTTTCTTTTGATAATTGCCGCAGGAATGCGG
TCTTGGAAGCTGATTTTGCAAAAAGGGTTCAAACCTCCGAAAGCTCGGAAAAGTGGCACTACCATCGC
GGGGTGGTCTATAAGGATGGAATAGTTCTTGGAGCAGACACGAGCAACTGAAGGGATGTTGTTGCT
GACAAAAGCTGTTCAAAAATTCACCTCATATCTCCTAATATTTATTGCTGTGGTGCCTGGACAGCTGCAG
ACACAGACATGACAACCCAGCTTATTTCTTCTAAGTGGAGCTCCACTCTCTCACCACCGCCGCCCTTCC
CAGAGTTGTCACAGCGAATCGGATGCTGAAGCAGATGCTTTTCAGGTATCAAGGTTACATTGGTGCAGCC
CTAGTTTTGGGGGAGTCGATGTTACTGGACCTCATCTCTACAGCATCTATCCGCATGGATCAACTGATA
AACTGCCCTTATGTCACCATGGGTTCTGGCTCCTTGGCAGCAATGGCTGTGTTGAAGATAAGTTTAGGCC
AGATATGGAGGAGGAAGAAGCCAAGAAGCTAGTGAGTGAAGCTATTGCAGCTGGCATCTTAATGACTTG
GGTCTGGAAGCAACATTGATCTGTGTGTTATCAGCAAGCAAGCTGGACTTTCTCCGTCACACTCAG
TGCCCAACAAGAAAGGGACCAGTTTGGCCGGTACAGGTGTGAGAAAGGCACTACCGCTGTCCTCACGGA
GAAAGTACCCCTCTGGAGCTCGAGGTGCTAGAAGAGATTGTTTCAGACAATGGACACTTCG

ACGCGTACGCGGCCGCTCGAGCAGAAAACCTCATCTCAGAAGAGGATCTGGCAGCAAATGATATCCTGGATT
ACAAGGATGACGACGATAAGGTTTAA



[View online »](#)

Protein Sequence: >RR208386 representing NM_053532
Red=Cloning site Green=Tags(s)

MAAVSVFQAPVGGFSFDNCRNAVLEADF AKKGFKLPKARKTGTTIAGVVYKDGIVLGADTRATEGMVVA
 DKNCSKIHFISPNIYCCGAGTAADTDMTTQLISSNLELHSLTTGRLPRVVTANRMLKQMLFRYQGYIGAA
 LVLGGVDVTGPHLYSIYPHGSTDKLPYVTMGSGLAAMAVFEDKFRPDMEEEEAKKL VSEAIAAGIFNDL
 GSGSNIDL CVISKSKLDFLRPYSVPNKKGTRFGRYRCEKGTAVL TEKVTPLELEVL EEIVQTMDTS

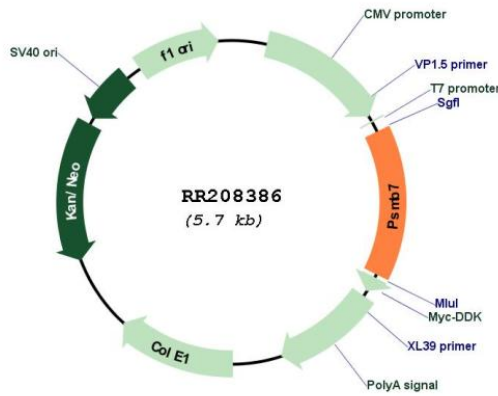
TRTRPLEQKLISEEDLAANDILDYKDDDDKV

Restriction Sites: SgfI-MluI

Cloning Scheme:



Plasmid Map:



ACCN: NM_053532
ORF Size: 831 bp

OTI Disclaimer:	The molecular sequence of this clone aligns with the gene accession number as a point of reference only. However, individual transcript sequences of the same gene can differ through naturally occurring variations (e.g. polymorphisms), each with its own valid existence. This clone is substantially in agreement with the reference, but a complete review of all prevailing variants is recommended prior to use. More info
OTI Annotation:	This clone was engineered to express the complete ORF with an expression tag. Expression varies depending on the nature of the gene.
Components:	The ORF clone is ion-exchange column purified and shipped in a 2D barcoded Matrix tube containing 10ug of transfection-ready, dried plasmid DNA (reconstitute with 100 ul of water).
Reconstitution Method:	<ol style="list-style-type: none"> 1. Centrifuge at 5,000xg for 5min. 2. Carefully open the tube and add 100ul of sterile water to dissolve the DNA. 3. Close the tube and incubate for 10 minutes at room temperature. 4. Briefly vortex the tube and then do a quick spin (less than 5000xg) to concentrate the liquid at the bottom. 5. Store the suspended plasmid at -20°C. The DNA is stable for at least one year from date of shipping when stored at -20°C.
RefSeq:	NM_053532.1 , NP_445984.1
RefSeq Size:	993 bp
RefSeq ORF:	834 bp
Locus ID:	85492
UniProt ID:	Q9JHW0
Cytogenetics:	3q12
MW:	29.9 kDa
Gene Summary:	mouse homolog is a subunit of the multisubunit protease involved in the generation of peptides presented by MHC class I molecules [RGD, Feb 2006]