

Product datasheet for **RR208372**

Prkg1 (NM_001105731) Rat Tagged ORF Clone

Product data:

Product Type:	Expression Plasmids
Product Name:	Prkg1 (NM_001105731) Rat Tagged ORF Clone
Tag:	Myc-DDK
Symbol:	Prkg1
Synonyms:	cGk1; Pkgi
Mammalian Cell Selection:	Neomycin
Vector:	pCMV6-Entry (PS100001)
E. coli Selection:	Kanamycin (25 ug/mL)



[View online »](#)

ORF Nucleotide Sequence:

>RR208372 representing NM_001105731
 Red=Cloning site Blue=ORF Green=Tags(s)

TTTTGTAATACGACTCACTATAGGGCGGCCGGGAATTCGTCGACTGGATCCGGTACCGAGGAGATCTGCC
 GCC**CGCATCGC**C

ATGAGCGAGCTGGAGGAAGACTTTGCCAAGATTCTCATGCTCAAGGAGGAGAGGATCAAAGAGCTGGAGA
 AGCGGCTGT CAGAGAAAAGAGGAAGAAATCCAGGAGCTGAAGAGGAACTCCACAAATGCCAGTCGGTGCT
 GCCCGTGCCCTCCACCCACATTGGCCCGCGGACCACCCGGGCGCAGGGCATCTCCGCGGAGCCGAGACC
 TACAGGTCCTTCCACGACCTGCGCCAGGCGTTCGGAAGTTCCTAAATCCGAGAGGTGCAAGGATCTCA
 TAAAGGAGGCTATCCTTGACAATGACTTTCATGAAGAACTGGAGCTGTCACAGATCCAGGAGATTGTGA
 TTGTATGTACCCCGTGAATATGGGAAGGACAGCTGCATCATCAAGGAAGGCGATGTGGGGTCACTGGTG
 TATGTCATGGAAGATGGGAAGGTCGAAGTCACAAAAGAAGGTGTGAAGTTGTGCACCATGGTCCCGGGA
 AAGTGTCGGGGAGCTGGCTATTCTTTACAACGTACCCGGACAGCGACCGTCAAGACTCTGTAAATGT
 GAAACTCTGGGCCATTGATCGACAATGTTTTCAAACAATAATGATGAGAACAGGACTCATCAAGCACACC
 GAGTACATGGAGTTTTTAAAAAGTGTCCAACATTCCAGAGCCTTCTGTGAAATCCTCAGCAAGCTGG
 CTGATGTCCTCGAAGAGACTCACTATGAAAATGGAGAATATATCATAAGGCAGGGTGAAGAGGAGACAC
 CTTCTTTCATCATCAGCAAAGGAAGGTAAGCGTTACCCGAGAAGACTCACCAAGTGAAGACCCAGTCTTT
 CTTAGAACTTTAGGGAAGGGAGATTGGTTTTGAAGAGAAAGCCTTGACGGGGGAGGATGTAAGAACAGCGA
 ACGTCATTGCTGCAGAGGCTGTCACCTGCCTCGTATTGACAGAGACTCTTTCAAGCATTTAATTGGAGG
 ACTGGATGATGTCTTAACAAAGCATATGAGGATGCAGAAGCGAAAGCAAATA GAAGCCGAAGCTGCC
 TTCTTCGCCAACCTGAAGCTGTCTGACTTCAACATCATTGACACCCTTGGAGTGGGAGGTTTCGGACGAG
 TGGAGCTGGTCCAGTTGAAGAGTGAAGAATCTAAAACATTTGCGATGAAGATCCTCAAGAAACGACACAT
 TGTGGACACGAGACAGCAGGAGCACATCCGCTCAGAGAAGCAGATCATGCAGGGGGCTATTCCGATTTTC
 ATCGTGAGGCTATACCGGACATTTAAAGACAGCAAATACTTGTATATGTTGATGGAAGCTTGCCTAGGTG
 GAGAACTCTGGACTATTCTCAGGGATAGGGTTTCAATTTGAAGACTCGACAACCAGATTTTACACAGCATG
 TGTGGTAGAAGCGTTTGCCTATCTGCATTCCAAAGGAATCATTTACAGGGACCTCAAGCCAGAAAATCTC
 ATCCTAGATCACCGAGGTTATGCCGAAGTGGTTGACTTTGGCTTTGCAAAGAAAATAGGATTTGGAAAGA
 AAACATGGACTTTTTGTGGGACCCAGAATACGTGGCCCAAGAGATCATCCTGAACAAAGGCCATGACAT
 TTCTGCTGACTACTGGTCACTAGGGATTCTGATGTATGAGCTTCTGACTGGCAGCCACCTTTCTCAGGC
 CCAGATCCTATGAAAACCTACAACATCATACTGCGGGGATTGACATGATAGAATTTCCAAGAAGATTG
 CAAAAAGTGCTGCTAATTTAATTAATAAAAACTATGCAGGGACAACCCATCAGAAAGGTTAGGAAATTTGAA
 AAACGGAGTCAAAGACATTTAAAAACACAAGTGGTTTTGAGGGCTTTAACTGGGAAGGCTTAAAGAAAAGGC
 ACCTTGACTCCTCCATAAATCCGAGCGTTGCGTCGCCCACGGACACAAGCAATTTTACAGTTTCCCTG
 AGGACAGCGACGACCCACCGCTGATGACAACCTCAGGATGGGACATAGACTTCAGGACAGCGACGAGCCA
 CCGCCTGATGACAACCTCAGGATGGGACATAGACTTC

ACGCGTACGCGGGCGCTCGAGCAGAAACTCATCTCAGAAGAGGATCTGGCAGCAAATGATATCCTGGATT
 ACAAGGATGACGACGATAAAGTTTAA

Protein Sequence: >RR208372 representing NM_001105731
Red=Cloning site Green=Tags(s)

```
MSELEEDFAKILMLKEERIKELEKRLSEKEEIIQELKRKLHKCQSVLPVPSTHIGPRTRRAQGISAEPQT
YRSFHDLRQA FRKFTKSERSKDLIKEAILDNDFMKNLELSQIQEIVDCMYPVEYKGDSCIIKEGDVGLV
YVMEDGKVEVTKEGVKLCTMGPGKVFGLAILYNCTRTATVKTLVNVKLWAIDRQCFQTIMMRTGLIKHT
EYMEFLKSVPTFQSLPDEILSKLADVLEETHYENGEYIIROGARGDTFFIISKGKVSVTREDSPEDEPVF
LRTLKGDWFEEKALQGEDVRTANVIAAEAVTCLVIDRDSFKHLIGGLDDVSNKAYEDAEAKAKYEAEEA
FFANLKLSDFNIIIDTLGVGGFGRVELVQLKSEESKTFAMKILKKRHIVDTRQQEHIRSEKQIMQGAHSDF
IVRLYRTFKDSKYLMLMEACLGGELWTILRDRGSFEDSTTRFYTACVVEAFAYLHSGKGIYRDLKPENL
ILDHRGYAELVDFGFAKIGFGKKTWTFCTGPEYVAPEIILNKGHDISADYWSLGILMYELLTGSPFSG
PDPMKTYNIILRGIDMIEFPKIIAKSAANLIKLCRDNPSERLGNLKNGVKDIQKHKWFEGFNWEGLRKG
TLTPPIIPSVASPTDTSNFDSPEDSDEPPDDNSGWDIDFRTATSHRLMTTQDGT*T
```

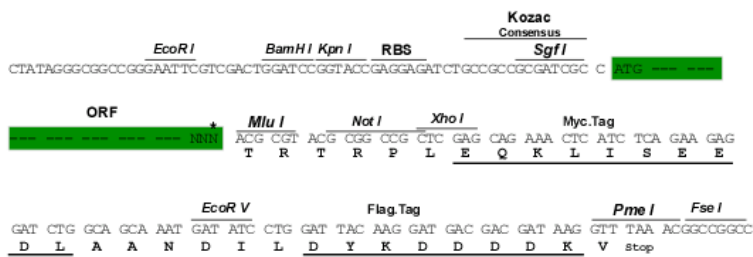
TRTRPLEQKLI SEEDLAANDILDYKDDDDKV

Chromatograms: https://cdn.origene.com/chromatograms/ja1605_a12.zip

Restriction Sites: SgfI-MluI

Cloning Scheme:

Cloning sites used for ORF Shuttling:



* The last codon before the Stop codon of the ORF

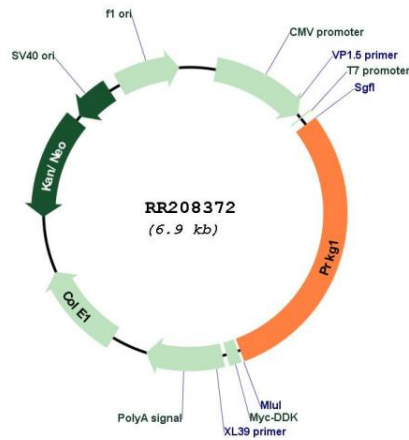
ACCN: NM_001105731

ORF Size: 2013 bp

OTI Disclaimer: The molecular sequence of this clone aligns with the gene accession number as a point of reference only. However, individual transcript sequences of the same gene can differ through naturally occurring variations (e.g. polymorphisms), each with its own valid existence. This clone is substantially in agreement with the reference, but a complete review of all prevailing variants is recommended prior to use. [More info](#)

OTI Annotation: This clone was engineered to express the complete ORF with an expression tag. Expression varies depending on the nature of the gene.

Components:	The ORF clone is ion-exchange column purified and shipped in a 2D barcoded Matrix tube containing 10ug of transfection-ready, dried plasmid DNA (reconstitute with 100 ul of water).
Reconstitution Method:	<ol style="list-style-type: none"> 1. Centrifuge at 5,000xg for 5min. 2. Carefully open the tube and add 100ul of sterile water to dissolve the DNA. 3. Close the tube and incubate for 10 minutes at room temperature. 4. Briefly vortex the tube and then do a quick spin (less than 5000xg) to concentrate the liquid at the bottom. 5. Store the suspended plasmid at -20°C. The DNA is stable for at least one year from date of shipping when stored at -20°C.
RefSeq Size:	2016 bp
RefSeq ORF:	2016 bp
Locus ID:	54286
Cytogenetics:	1q52
MW:	76.4 kDa
Gene Summary:	may play a role in cGMP mediated regulation of renal hemodynamics [RGD, Feb 2006]

Product images:


Circular map for RR208372