

Product datasheet for **RR208367**

C1r (NM_001134555) Rat Tagged ORF Clone

Product data:

Product Type:	Expression Plasmids
Product Name:	C1r (NM_001134555) Rat Tagged ORF Clone
Tag:	Myc-DDK
Symbol:	C1r
Vector:	pCMV6-Entry (PS100001)
E. coli Selection:	Kanamycin (25 ug/mL)
Cell Selection:	Neomycin



[View online »](#)

ORF Nucleotide
Sequence:

>RR208367 representing NM_001134555
Red=Cloning site Blue=ORF Green=Tags(s)

TTTTGTAATACGACTCACTATAGGGCGGCCGGGAATTCGTCGACTGGATCCGGTACCGAGGAGATCTGCC
GCC**CGGATCGCC**

ATGCGTCTCATCCCCCTCCTCTGGTGACCCTGTCTGTGGGGTGGAGGGCTCCATCTACCTCCCTCAGA
AGCTCTATGGAGAGGTGACCTCCCTCTGTATCCAAGCCTTACCCAGTGACTTGGAGACGACCACCGT
GATCACTGTCCCCACGGGTACAGGGTGAAGCTGGTCTTCTGGCAGTTTGTGTGGAGCCTTCTGAAGGC
TGTTTCTATGACTACGTCAAGATTTCTGCTGATAAGAAACTCTGGGAGGTTCTGTGGGCAGCAGGATT
CTCCTCAGGGCAACCCCCAGGAAGGAAGGAATTCATGTCCCAAGGAAACAAGATGCTGCTGACCTTTCA
CACAGACTTCTCCAACGAGGAGAATGGGACCATCATGTTCTACAAGGGCTTCTGGCCTACTACCAGGCT
GTGGACCTTGATGAATGTACGTCCAGCCAACTCAGTGGAGGAGGGTTGCAGCCCGATGCCAACACC
TGTGCCACAACATGTTGGAGGTTACTTCTGTTCTGCCGTCTGGCTACGAGCTTCAGAAAGACAGGCA
ATCCTGCCAGGCCGAGTGCAGCAGTGGGCTCTACACGGAGCCCTCGGGCTACATCTCCAGCTCGAGTAC
CCGAAGCCCTATCCACCCGATCTGCGCTGTAACACTACAGCATCCGGGTAGAGAGGGCCCTCACTGTGACC
TCAAGTTCCTGGATCCTTTTGAATTGATGACCACCAGCAAGTACACTGCCCTATGACCAGCTCCAGAT
CTACGCTAATGGGAAGAACTTGGGTGAATTCTGTGGAACGCAAAGGCCTCCAGACCTTGACACCAGCAGC
AACGCCGTGGATCTGCTGTTCTTACGGATGAGTCCGGGGACAGCCGAGGCTGGAAGCTTCGCTACACCA
CTGAAATCATCAAGTCCCCCAACCAAGGCCCTGGATGAGTTCACCATCATCCAGGATCCACAGCCTCA
GTACCAGTTCGGGATTACTTCATTGTACCTGCAAACAAGGCTACCAGCTCATGGAGGGAAGTCAGGGC
CTGCTCTCCTTACGGCTGTTTCCAGCATGATGGCACGTGGCACCGTCCATGCCAGGTGCAAGATCA
AGGACTGTGGACAGCCCCGAGCCTGTCTAATGGGGACTTCCGCTACCTACCACAAGAGGCGTGAACAC
CTATGAAGCCAGGATCCAGTATTACTGCCATGACCCATATTACAAGATGATGACCAGAGCTGGCAGCAGC
GAGTCCGTACGAGGGATATATACCTGCACACCCCAAGGCATTTGGAAGAACGAAGAGGAAGGAGAGAAAA
TGCCCCGGTGTCTGCCAGTATGTGGGAAGCCTGTCAACCCCGTACACAGAAAGCAGCGCATCATCGGAGG
GCAGAAAGCCAATCCGGGCAACTTCCCCTGGCAGGCATTACCAATATCCACGGGCGAGGGGGCGGGGCC
CTGCTTGGAGACCGTGGATCCTCACGGCAGCCACACCATCTACCCCAAGGAACACAACAAGAAAAACA
ACGTCAACGTGAGTAAAGATGTTTTCTGGCCACACAACGTGGAAGAGATCAAAAACTGGGACATCA
CCCTGTCCGTCCGGTATCATACACCCAGACTACCGCAAGATGAGCCTAACAATTTTGAAGGAGACATT
GCCCTACTGGAGCTGAAAACAGTGTCACTGGGTCCCAACCTCCTCCCATCTGTCTCCAGACAATG
AGACCTTCTATGACAAAGACCTTATGGGTTATGTGAGCGGCTTCGGGATAACAGAAGATAAAATAGCTTT
TAATCTCAGGTTTGTCCGTCTGCCATAGCCGATCGAGAGGCATGCCAGAGGTGGCTCCGGACGAAAAAC
AGTAATGATGATTTTCTCAAAATATGTTCTGTTCTGGGGACCCAACTCTCAAGCATGACGCTGCCAGG
GGGACAGTGGGGGTGTTTTGCAGTCAGGGACCGCAGTCGTGATATCTGGGTGGCTACAGGCATCGTATC
CTGGGGCATTGGGTGTGGTGAGGGATACGGCTTTACACCAAGTACTGAATTATGTTGACTGGATCAAG
AAAGAGATTGGAGATGAAAAC

ACGCGTACGCGGCCGCTCGAGCAGAACTCATCTCAGAAGAGGATCTGGCAGCAAATGATATCCTGGATT
ACAAGGATGACGACGATAAGGTTTAA

Protein Sequence: >RR208367 representing NM_001134555
 Red=Cloning site Green=Tags(s)

MRLIPLLLVTLFCGVEGSIYLPQKLYGEVTSPLYPKPYPSDLETTTIVITVPTGYRVKLVFWQFDVEPSEG
 CFYDYVKISADKKTGRFCGQDSPQGNPPGRKEFMSQGNKMLLTFHTDFSNEENGTIMFYKGFLLAYYQA
 VDLDECTSQPNVVEEGLQPRCQHLCHNYVGGYFCSCRPGYELQKDRQSCQAECSGLYTEPSGYISSLEY
 PKPYPPDLRCNYSIRVERGLTVHLKFLDPFEIDDHQQVHCPYDQLQIYANGKNLGEFCGTQRPDLDTSS
 NAVDLLFFTDESGDSRGWKLRYTTEIIKCPQPKALDEFTI IQDPQPQYQFRDYFIVTCKQGYQLMEGSQA
 LLSFTAQCQHDGTWHRAMPCKIKDCGQPRSLNSGDFRYLTTRGVNTYEARIQYYCHDPYKMMTRAGSS
 ESVRGIYCTPQGIWKNEEEGEKMPRCLPVCCKPVNPVTQKQRIIGGQKANPGNFPWQAFNIHGRGGGA
 LLGDRWILTAHTIYPKEHNKENVVNSKDVFLGHTNVEEIKKLGHHPVRRV IHPDYRQDEPNFEGDI
 ALLELENSVTLGPNLLPICLPDNETFYDKDLMGYVSGFGITEDIKIAFNLRVRLPIADREACQRLRTKN
 SNDVFSQNMFCSGDPTLKHDAQCQDSSGGVFAVRDRSRDIWVATGIVSWGIGCGEGYGFYTKLLNYVDWIK
 KEIGDEN

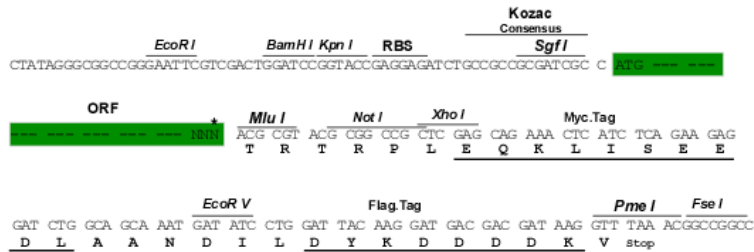
TRTRPLEQKLISEEDLAANDILDYKDDDDKV

Restriction Sites:

SgfI-MluI

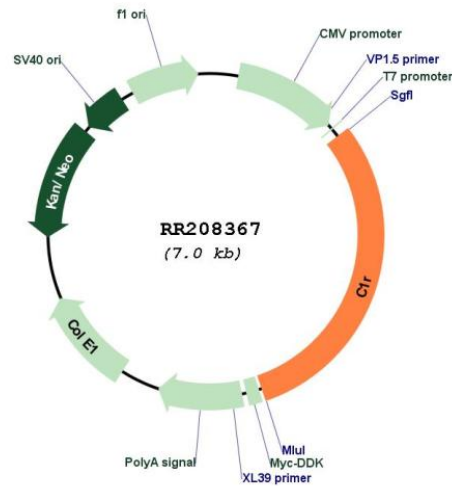
Cloning Scheme:

Cloning sites used for ORF Shuttling:



* The last codon before the Stop codon of the ORF

Plasmid Map:



ACCN: NM_001134555

ORF Size: 2121 bp

OTI Disclaimer: The molecular sequence of this clone aligns with the gene accession number as a point of reference only. However, individual transcript sequences of the same gene can differ through naturally occurring variations (e.g. polymorphisms), each with its own valid existence. This clone is substantially in agreement with the reference, but a complete review of all prevailing variants is recommended prior to use. [More info](#)

OTI Annotation: This clone was engineered to express the complete ORF with an expression tag. Expression varies depending on the nature of the gene.

Components: The ORF clone is ion-exchange column purified and shipped in a 2D barcoded Matrix tube containing 10ug of transfection-ready, dried plasmid DNA (reconstitute with 100 ul of water).

Reconstitution Method:

1. Centrifuge at 5,000xg for 5min.
2. Carefully open the tube and add 100ul of sterile water to dissolve the DNA.
3. Close the tube and incubate for 10 minutes at room temperature.
4. Briefly vortex the tube and then do a quick spin (less than 5000xg) to concentrate the liquid at the bottom.
5. Store the suspended plasmid at -20°C. The DNA is stable for at least one year from date of shipping when stored at -20°C.

RefSeq: [NM_001134555.1](#), [NP_001128027.1](#)

RefSeq Size: 2797 bp

RefSeq ORF: 2124 bp
Locus ID: 312705
Cytogenetics: 4q42
MW: 80.4 kDa