

Product datasheet for **RR208356**

Dbn1 (NM_031024) Rat Tagged ORF Clone

Product data:

Product Type:	Expression Plasmids
Product Name:	Dbn1 (NM_031024) Rat Tagged ORF Clone
Tag:	Myc-DDK
Symbol:	Dbn1
Mammalian Cell Selection:	Neomycin
Vector:	pCMV6-Entry (PS100001)
E. coli Selection:	Kanamycin (25 ug/mL)



[View online »](#)

ORF Nucleotide Sequence:

>RR208356 representing NM_031024
 Red=Cloning site Blue=ORF Green=Tags(s)

TTTTGTAATACGACTCACTATAGGGCGGCCGGAATTCGTCGACTGGATCCGGTACCGAGGAGATCTGCC
 GCC**CGCATCGCC**

ATGGCCGGCGTCAGCTTCAGCGGCCACCGCTGGAGCTGTGGCGGCGTACGAGGAGGTGATCCGGGAGG
 AGAGTGCAGCCGACTGGGCTCTGTACACTTACGAAGATGGCTCAGATGACCTCAAGCTTGCAGCATCAGG
 AGAAGGAGGCTTGCAGGAGCTTTTCAGGCCACTTCGAGAACCAGAAAGTGTGTACGGTTTCTGCAGCGTC
 AAGGACTCCCAGGCTGCCTTGC AAAATATGTGCTCATCAACTGGGTTGGTGAGGATGTGCCTGATGCC
 GAAAATGTGCTTGTGCCAGCCATGTGGCCAAGGTGGCTGAATTCTTCCAGGGCGTTGACGTAATTGTGAA
 TGCCAGCAGTGTGGAGGATATCGATGCTGGCGCCATTGGGCAGCGGCTCTCCAATGGACTGGCTCGGCTC
 TCTAGCCCAGTGTGCACCGCTGCGCCTTCGGGAGGATGAGAATGCTGAGCCGGTGGGCACCACCTACC
 AGAAGACGGATGCGGCCGTGGAGATGAAGCGGATTAACCGTGAGCAGTTTTGGGAGCAGGCCAAGAAGGA
 GGAGGAGCTGCGGAAGGAGGAGGAGCGGAAGAAGGCTTTGGATGCCAGGCTCAGTTTTGAGCAGGAGCGG
 ATGGAGCAGGAGCGGCAGGAGCAGGAGGAACGGGAACGGCGCTACCGAGAGCGGGAGCAGCAGATCGAGG
 AGCACAGGAGGAAACAGCAGAGTCTGGAAGCTGAAGAGGCCAAGAGGAGGTTAAAGGATCAGTCTATCTT
 TGGTGATCAGCGAGATGAAGAGGAAGAGTCCCAGATGAAGAAGTCGGAATCTGAGGTGGAGGAGGCAGCT
 GCCATCATTGCCAGCGGCTGATAACCCACGGGAGTTCTTTCAGACAGCAGGAACGAGTGGCTTCAGCCT
 CTGGTGGCAGCTGTGACGCACCCCTCGCCCTTCAACCACCGACCAGGTCGTCCTACTGCCCTTTCATAAA
 GGCATCGACAGTGGGCTTCTCCTCCTCCTCCTCCTCCTCCTCCTCCTCCTCCTCCTCCTCCTCCTCCTCCT
 ATCACCTGCCACCGCACCCAAACCTCTCTTCTCCTCCTCCTCCTCCTCCTCCTCCTCCTCCTCCTCCTCCT
 TGCGAGAGGGCCCTGGATGAGGTACATCCTCGCAGCCTCCACCCACCTCCACCACCCACCCACCCAGCT
 CAAGAGGCCAGGAGTCTGCTCCAGACTGGACGGTGAAGAGGTCTGCAAGGAGGCCAAAGTAGCAGCAG
 CTCCTCAGGTCTGGGCTGGCTGTGCAGAGGAGCCTCCTCGGGCACAGGAACCTCCCTGTGCAAAGCAG
 CCCCACGGAGGACTTGATGTGCACAGAATCTCCTGAGCAGGCTGTCTGGCGGCCCTCCAGAGCCTGAT
 GCCTCTGTCACTCAGTAGCTGATGCTCATGCAGCTGACACCATCGAGACCACCTGCCACTACTGCCA
 CCACTATTGCCGACAACGTCACCCCTGCCGCCAGCCTCATTGATCTGTGGCCTGGTAACGGGGAAGA
 GGCTCAACGCCTCAGGCTGAACCCAGGGTGCCACCCACCCCTCAGGTGCTGAGGCCTCCCTGGCAGAG
 GTGCCTCTGTTGAATGAGGCAGCTCAGGAGCCGCTGCCACCAGTGGGCGAAGGCTGTGCCAACCTTCTTA
 ATTTTCGATGAGCTGCCAGAACCTCCAGCCACCTTCTGTGACCCAGAGGAGGAAGCCGAAGGAGAGCCGCT
 GGCTGCCTCCCAGGTCTAACTATGCCCTCAGCCCTAGAGGAGGTAGATCAGGTGTTGGAGCAGGAGTTG
 GAGCCAGAACCTCATCTGCTGACCAATGGAGAGACCCTCAGAAGGAGGGGAGCCAGCAGGCCAGCGAAG
 GATACTTCAGTCAGTCACAGGAGGAAGAATTCGCCCAATCAGAAGAGCCATGTGCAAAGGCTCCACCTCC
 TGTATTCTACAACAAGCCTCCAGAAATCGACATCACCTGCTGGGATGCAGACCCAGTTCCTGAAGAGGAA
 GAGGGCTTCGAGGGTGGTAT

ACGCGTACGCGGCCGCTCGAGCAGAACTCATCTCAGAAGAGGATCTGGCAGCAAATGATATCCTGGATT
 ACAAGGATGACGACGATAAGGTTTAA

Protein Sequence: >RR208356 representing NM_031024
Red=Cloning site Green=Tags(s)

MAGVSFSGHRLELLAAYEEVIREESAADWALTYEDGSDDLKLAASGEGGLQELSGHFENQKVMYGFCSV
 KDSQAALPKYVLINWVGEDVPDARKCACASHVAKVAEFQGVQVIVNASSVEDIDAGAIGQRLSNGLARL
 SSPVLHRLRLREDENAEPVGTYYQKTDAAVEMKRINREQFWEQAKKEELRKEEERKKALDARLRFEQER
 MEQERQEERERRREREREQQIEEHRRKQSQSLEAEEAKRRLKDQSFIFGDQRDEEEESQMKKSESEVEEAA
 AIIAQRPDNPREFFRQQERVASASGGSCDAPSPFNHRPGRPYCPFIKASDSGSPSSSSSSSSPPRTPFPY
 ITCHRTPNLSSSLPCSHLDSHRRMAPTPIPTRSPSDSSTASTPITEQIERALDEVTSSQPPPPPPPPPPA
 QEAPESAPRLDGEEVCKEAKVAAAPQVWAGCAEPPRAQEPPLLQSSPTEDLMCTESPEQAVLAASPEPD
 ASVTSVADAAHAADTIETTTATTATTIADNVTPAAASLIDLWPGNGEEASTPQAEPRVPTPPSGAEASLAE
 VPLLNEAAQEPLPPVGEKANLLNFDLPEPPATFCDPEEEAAGEPLAASQVLTMPALEEVDQVLEQEL
 EPEPHLLTNGETTQKEGTQQASEGYFSQSQEEFAQSEEPKAKAPPPVFYNKPPEIDITCWDADVPVEEE
 EGFEGGD

TRTRPLEQKLISEEDLAANDILDYKDDDDKV

Restriction Sites:

SgfI-MluI

Cloning Scheme:

Cloning sites used for ORF Shuttling:



* The last codon before the Stop codon of the ORF

ACCN: NM_031024

ORF Size: 2121 bp

OTI Disclaimer: The molecular sequence of this clone aligns with the gene accession number as a point of reference only. However, individual transcript sequences of the same gene can differ through naturally occurring variations (e.g. polymorphisms), each with its own valid existence. This clone is substantially in agreement with the reference, but a complete review of all prevailing variants is recommended prior to use. [More info](#)

OTI Annotation: This clone was engineered to express the complete ORF with an expression tag. Expression varies depending on the nature of the gene.

Components: The ORF clone is ion-exchange column purified and shipped in a 2D barcoded Matrix tube containing 10ug of transfection-ready, dried plasmid DNA (reconstitute with 100 ul of water).

Reconstitution Method:

1. Centrifuge at 5,000xg for 5min.
2. Carefully open the tube and add 100ul of sterile water to dissolve the DNA.
3. Close the tube and incubate for 10 minutes at room temperature.
4. Briefly vortex the tube and then do a quick spin (less than 5000xg) to concentrate the liquid at the bottom.
5. Store the suspended plasmid at -20°C. The DNA is stable for at least one year from date of shipping when stored at -20°C.

RefSeq: [NM_031024.1](#), [NP_112286.1](#)

RefSeq Size: 2697 bp

RefSeq ORF: 2124 bp

Locus ID: 81653

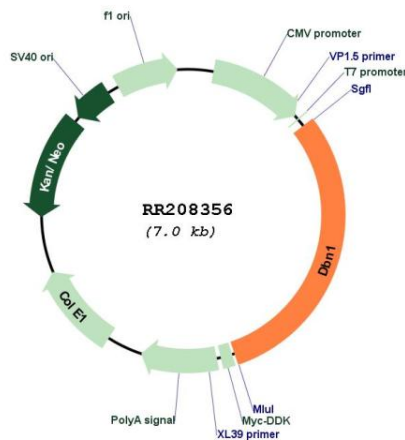
UniProt ID: [Q07266](#)

Cytogenetics: 17p14

MW: 77.5 kDa

Gene Summary: may play a role in neurite outgrowth [RGD, Feb 2006]

Product images:



Circular map for RR208356