

Product datasheet for **RR208324**

Uchl3 (NM_001110165) Rat Tagged ORF Clone

Product data:

Product Type: Expression Plasmids
Product Name: Uchl3 (NM_001110165) Rat Tagged ORF Clone
Tag: Myc-DDK
Symbol: Uchl3
Synonyms: RGD1561196
Vector: pCMV6-Entry (PS100001)
E. coli Selection: Kanamycin (25 ug/mL)
Cell Selection: Neomycin
ORF Nucleotide Sequence: >RR208324 representing NM_001110165
Red=Cloning site Blue=ORF Green=Tags(s)

TTTTGTAATACGACTCACTATAGGGCGCCGGGAATTCGTCGACTGGATCCGGTACCGAGGAGATCTGCC
GCC**CGATCGCC**

ATGGAGGGTCAGCGCTGGCTGCCGCTGGAGGCCAACCCCTGAGGTCACCAACCAGTTTCTCAAGCACTAG
GCCTGCATCCTAACTGGCAGTTTGTGGACGTGTACGGGATGGAGCCTGAACCTTCAGCATGGTTCCGAG
ACCAGTGTGCGCGTGTACTCCTCTCCCTATCACAGAGAAGTATGAAGTCTTCAGAACAGAAGAGGAA
GAGAAAATAAAATCCCAAGGACAAGATGTTACGTCATCAGTGTATTTATGAAACAAACCATCAGCAACG
CCTGTGGAACCATTGGACTAATCCACGCCATCGCGAACAAAGACAAGATGCACCTTTGAATCAGGGTC
AGCATTGAAAAAGTTCTGGAGGAGTCTGTAGCAATGAGCCCTGAAGAAAGAGCCAGACACCTGGAGAAC
TATGACGCTATTCGAGTTACTCATGAAACCAGTGACATGAAGGTCAGACTGAGGCACCAAGTATAGATG
AAAAAGTAGATCTTCATTTTATTGCGTTAGTTCATGTAGATGGGCATCTCTATGAATTAGATGGACGGAA
ACCGTTTCCAATTAACCATGGGAAAAGTAGTGATGAGACATTGTTAGAGGATGCCATAGAAGTCTGCAAG
AAGTTCATGGAGCGCGACCCTGATGAGTTAAGATTTAATGCAATTGCTCTCTCAGCAGCA

ACGCGTACGCGGCCGCTCGAGCAGAAACTCATCTCAGAAGAGGATCTGGCAGCAAATGATATCCTGGATT
ACAAGGATGACGACGATAAGGTTTAA



[View online »](#)

Protein Sequence: >RR208324 representing NM_001110165
 Red=Cloning site Green=Tags(s)

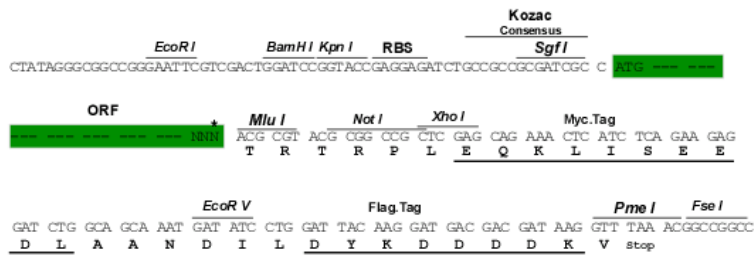
MEGQRWLPLEANPEVTNQFLKQLGLHPNWQFVDVYGMPELLSMVPRPVCVALLLPITEKEYEVFRTEEE
 EKIKSQGDVTSVYFMKQTISNACGTIGLIHAIANNKDKMHFESGSALKKFLEESVAMSPEERARHLEN
 YDAIRVTHETSAHEGQTEAPSIDEKVDLHFIALVHVDGHLVELDGRKPPFINHGKTSDETLLEDAIEVCK
 KFMERDPDELRFNAIALSAA

TRTRPLEQKLISEEDLAANDILDYKDDDDKV

Restriction Sites: Sgfl-MluI

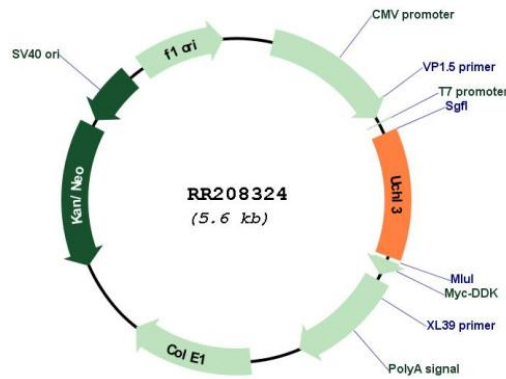
Cloning Scheme:

Cloning sites used for ORF Shuttling:



* The last codon before the Stop codon of the ORF

Plasmid Map:



ACCN: NM_001110165

ORF Size: 690 bp

OTI Disclaimer:	The molecular sequence of this clone aligns with the gene accession number as a point of reference only. However, individual transcript sequences of the same gene can differ through naturally occurring variations (e.g. polymorphisms), each with its own valid existence. This clone is substantially in agreement with the reference, but a complete review of all prevailing variants is recommended prior to use. More info
OTI Annotation:	This clone was engineered to express the complete ORF with an expression tag. Expression varies depending on the nature of the gene.
Components:	The ORF clone is ion-exchange column purified and shipped in a 2D barcoded Matrix tube containing 10ug of transfection-ready, dried plasmid DNA (reconstitute with 100 ul of water).
Reconstitution Method:	<ol style="list-style-type: none">1. Centrifuge at 5,000xg for 5min.2. Carefully open the tube and add 100ul of sterile water to dissolve the DNA.3. Close the tube and incubate for 10 minutes at room temperature.4. Briefly vortex the tube and then do a quick spin (less than 5000xg) to concentrate the liquid at the bottom.5. Store the suspended plasmid at -20°C. The DNA is stable for at least one year from date of shipping when stored at -20°C.
RefSeq:	NM_001110165.1 , NP_001103635.1
RefSeq Size:	914 bp
RefSeq ORF:	693 bp
Locus ID:	498560
UniProt ID:	Q91Y78
Cytogenetics:	15q21
MW:	26.1 kDa
Gene Summary:	mouse homolog is an enzyme involved in proteolytic processing of polymeric ubiquitin [RGD, Feb 2006]