

## Product datasheet for **RR208301**

### Mapt (NM\_017212) Rat Tagged ORF Clone

#### Product data:

Product Type:	Expression Plasmids
Product Name:	Mapt (NM_017212) Rat Tagged ORF Clone
Tag:	Myc-DDK
Symbol:	Mapt
Synonyms:	Mtapt; pTau; RNPTAU; Tau
Mammalian Cell Selection:	Neomycin
Vector:	pCMV6-Entry (PS100001)
E. coli Selection:	Kanamycin (25 ug/mL)
ORF Nucleotide Sequence:	>RR208301 representing NM_017212 Red=Cloning site Blue=ORF Green=Tags(s)

TTTTGTAATACGACTCACTATAGGGCGGCCGGAATTCGTCGACTGGATCCGGTACCGAGGAGATCTGCC  
GCC**CGATCGCC**

ATGGCTGAACCCCGCCAGGAGTTTGACACAATGGAAGACCAGGCCGGAGATTACACTATGCTCCAAGACC  
AAGAAGGAGACATGGACCATGGCTTAAAAGCTGAAGAAGCAGGCATCGGAGACACCCGAACATGGAGGA  
CCAAGCTGCTGGGCATGTGACTCAAGCTCGAGTGGCCGGCGTAAGCAAAGACAGGACAGGAAATGACGAG  
AAGAAAGCCAAGGGCGCCGATGGCAAAACGGGGCGAAGATCGCCACACCTCGGGGAGCAGCCACTCCGG  
GCCAGAAAGGCACATCCAATGCCACCAGGATCCCAGCCAAGACCACCCAGCCAAAGACTCCTCCAGG  
ATCAGGTGAACCACAAAATCCGGAGAACGAAGCGGCTACAGCAGCCCGGCTCGCCCGGAACCCCTGGC  
AGTCGCTCCCGTACCCATCCCTACCAACGCCGCCACCCGAGAGCCAAAAAGGTGGCAGTGGTTGCGA  
CTCCCCCTAAGTCACCGTCTGCCAGTAAGAGCCGCTACAGACTGCCCTGTGCCATGCCAGACCTAAA  
GAACGTCAAGTCCAAGATTGGCTCCACTGAGAACCTGAAGCACCAGCCGGGAGGCCGGAAGGTGCAGATA  
ATTAATAAGAAGCTGGATCTTAGCAACGTCCAGTCCAAGTGTGGCTCAAAGGACAATATCAAACACGTCC  
CGGGCGGAGGCAGTGTGCAAATAGTCTACAAGCCAGTGGACCTGAGCAAGGTGACCTCCAAGTGTGGTTC  
CTTAGGGAACATCCATCACAAGCCAGGAGGTGGCCAGGTAGAAGTAAAAATCAGAGAAGCTGGACTTCAAG  
GATAGAGTCCAGTCAAGATTGGCTCCTTGATAAACATCACCCATGTCCCTGGAGGAGGGAATAAGAAGA  
TTGAAACCCACAAGCTGACCTTCAGGGAGAATGCCAAAGCCAAGACAGACCATGGAGCAGAAATCGTGTA  
CAAGTCACCTGTGGTGTCTGGGGACACATCTCCACGGCACCTCAGCAACGTCTCCTCCACGGGCAGCATC  
GACATGGTGGACTCTCCACAGCTTGCCACGTTAGCCGATGAAGTGTCCGCTCTTTGGCCAAGCAGGGTT  
TGTG

**ACGCGT**ACGCGGCCGCTCGAGCAGAAACTCATCTCAGAAGAGGATCTGGCAGCAAATGATATCCTGGATT  
ACAAGGATGACGACGATAAGGTTTAA



[View online >](#)

**Protein Sequence:** >RR208301 representing NM\_017212  
 Red=Cloning site Green=Tags(s)

MAEPRQEFDTMEDQAGDYTMLQDQEGDMDHGLKAE EAGIGDTPNMEDQAAGHVTQARVAGVSKDRTGNDE  
 KKAKGADGKTGAKIATPRGAATPGQKGTSNATRIPAKTTPSPKTPPGSGEPPKSGERSGYSSPGSPGTPG  
 SRSRTPSLPTPPTREP KKVAVVRTPPKSPSASKSRLQTAPVMPDLKNVRSKIGSTENLKHQPGGGKVQI  
 INKKLDL SNVQSKCGSKDN IKHVPGGGSVQIVYKPVDL SKVTSKCGSLGNIH HKPGGGQVEVKSEKLD FK  
 DRVQSKIGSLDNI THVPGGNKKIETHKLTFR ENAKAKTDHGAEI VYKSPVVS GDTSPRHLSNV SSTGSI  
 DMVDSPQLATLADEVSASLAKQGL

TRTRPLEQKLISEEDLAANDILDYKDDDDKV

**Chromatograms:** [https://cdn.origene.com/chromatograms/ja1466\\_e03.zip](https://cdn.origene.com/chromatograms/ja1466_e03.zip)

**Restriction Sites:** SgfI-MluI

**Cloning Scheme:**

Cloning sites used for ORF Shuttling:



\* The last codon before the Stop codon of the ORF

**ACCN:** NM\_017212

**ORF Size:** 1122 bp

**OTI Disclaimer:** The molecular sequence of this clone aligns with the gene accession number as a point of reference only. However, individual transcript sequences of the same gene can differ through naturally occurring variations (e.g. polymorphisms), each with its own valid existence. This clone is substantially in agreement with the reference, but a complete review of all prevailing variants is recommended prior to use. [More info](#)

**OTI Annotation:** This clone was engineered to express the complete ORF with an expression tag. Expression varies depending on the nature of the gene.

**Components:** The ORF clone is ion-exchange column purified and shipped in a 2D barcoded Matrix tube containing 10ug of transfection-ready, dried plasmid DNA (reconstitute with 100 ul of water).

**Reconstitution Method:**

1. Centrifuge at 5,000xg for 5min.
2. Carefully open the tube and add 100ul of sterile water to dissolve the DNA.
3. Close the tube and incubate for 10 minutes at room temperature.
4. Briefly vortex the tube and then do a quick spin (less than 5000xg) to concentrate the liquid at the bottom.
5. Store the suspended plasmid at -20°C. The DNA is stable for at least one year from date of shipping when stored at -20°C.

**RefSeq:** [NM\\_017212.2](#), [NP\\_058908.2](#)

**RefSeq Size:** 5159 bp

**RefSeq ORF:** 1125 bp

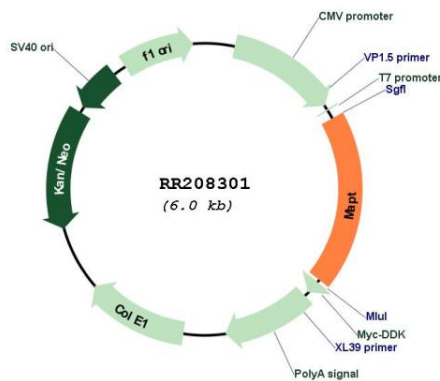
**Locus ID:** 29477

**Cytogenetics:** 10q32.1

**MW:** 39.1 kDa

**Gene Summary:** a microtubule-associated protein; expression is found specifically in neurons [RGD, Feb 2006]

**Product images:**



Circular map for RR208301