

Product datasheet for **RR208296**

Polr3d (NM_001031653) Rat Tagged ORF Clone

Product data:

Product Type: Expression Plasmids
Product Name: Polr3d (NM_001031653) Rat Tagged ORF Clone
Tag: Myc-DDK
Symbol: Polr3d
Synonyms: MGC116334
Vector: pCMV6-Entry (PS100001)
E. coli Selection: Kanamycin (25 ug/mL)
Cell Selection: Neomycin
ORF Nucleotide Sequence: >RR208296 representing NM_001031653
 Red=Cloning site Blue=ORF Green=Tags(s)

TTTTGTAATACGACTCACTATAGGGCGCCGGGAATTCGTCGACTGGATCCGGTACCGAGGAGATCTGCC
 GCC**CGGATCGCC**

ATGTCGGAAGGAAACGCCGGGGCAGCCAGCAATCCTGGAGGGCCCCGACCCCTTCTCTCTGGGGGCC
 GGGGACTTGTGGCCGGCGCCGCTCCCCGCTTACGCCAGGCCGCCTTCCCTCCATCCGCTCTCGGGA
 CCTCACCTTGGCGGTGTCAAGAAGAAAACCTTACCCCAAATATCATCAGTCGGAAGATCAAAGAAGAG
 CCAAAGGAAGAAGTAACTATGAAGAAGGAAAAGCGTGAACGGGACAGAGACCGCCAGCGTGAGGGTCATG
 GACGGGGACGTGGCCGCCAGAAGTGATCCAGTCCCATTCCATCTTTGAGCAGGGTCCAGCAGAAATGAT
 GAAAAAAAAAGGGAAGTGGGATAAGACTGTGGATATGTCAGACATGGGGCCTTCTCATATCATCAACATC
 AAAAAAGAGAAGAGAGAAAACAGATGAAGAAACCAAGCAGATCTTGCGCATGCTGGAGAAGGATGATTTCA
 TCGATGACCCAGGGCTAAAGAATGACACACGGAACATGCCAGTACAACCTGCCACTGGCTCATTGAGGGTG
 GCTTTTCAAGGAGGAGAGTGAAGAGCCAGACGTTAAGCCTTTTCTGCTGGCCCCAAGGAAGAAGACATG
 GAGGTGGATGTGCCAGCTGTAAAAGTAAAGAGGAGCCACGGGATGAGGAAGAGGAGCGAAAAGTAAAAG
 CCCCTCCAAGAGCAGCCAGGAAGACCCCTGGTCTTCCAAGGACGTGTCTGTGGCAGACTGCTGAGGGA
 GTTGAGCCTCACGAAGGAGGAGGAGCTGCTGTTCCCTCAGCTGCCTGATACCCTCCTGGGCAGCCGCT
 ACTCAGGACATCAAGCCTGTCAAGACAGAGGTGCAGGGCAGGATGGACAGATGGTAGTCATAAAGCAAG
 AAAAGGACCGGAAACCAGGCTAGCAGAGAATGCTTGTACCTTGCTGACCTGACAGAGGGTCAAGTGGG
 CAAGCTACTCATCCGAAATCAGGGAAGGTGCAGCTTCTCCTGGCAAGGTGACTCTGGATGTGACCATG
 GGAACAACCTGTTCTTCTGAGGAAGTGTGTGTGGCCTTGGGGACAGCAGGACAGGGGAGATGA
 CAGTCCTAGGACATGTGAAGCACAACTGTATGTTCTCCTGATTTTGAATCTCTCTTGGATCACAACA
 CCGG

ACGCGTACGCGGCCGCTCGAGCAGAAACTCATCTCAGAAGAGGATCTGGCAGCAAATGATATCCTGGATT
 ACAAGGATGACGACGATAAGGTTTAA



[View online >](#)

Protein Sequence: >RR208296 representing NM_001031653
Red=Cloning site Green=Tags(s)

MSEGNAAGEPSNPGGPRPLL SGGRLVGRRPAPPLTPGRLPSIRSRLTLGGVKKKFTTPNIISRKIKEE
 PKEEVTMKKEKRERDRDRQREGHGRGRPEVIQSHSIFEQGAEMMKKGNWDKTVDMSDMGPSHIINI
 KKEKRETDEETKQILRMLEKDDFIDDPGLKNDTRNMPVQLPLAHSGLFKEESEEPDVKPF SAGPKEEDM
 EVDVPAVKVKEEPRDEEEAEKVKAPPAARKTPGLPKDVSVAELLRELSL TKEEELLFLQLPDTLPGQPP
 TQDIKPVKTEVQGEDQMVIKQEKDRETRLAENACTLADLTEGQVGLLIRKSGKVQLLLGKVTLDVDTM
 GTTCSFLQELVSVGLGDSRTGEMTVLGHVKHKLVCSPDFESLLDHHKR

TRTRPLEQKLISEEDLANDILDYKDDDDKV

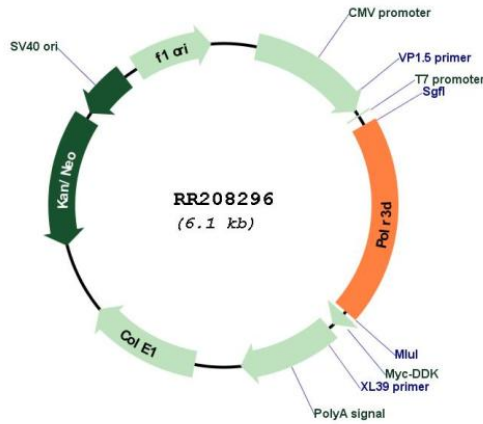
Restriction Sites:

SgfI-MluI

Cloning Scheme:



Plasmid Map:



ACCN: NM_001031653

ORF Size:	1194 bp
OTI Disclaimer:	The molecular sequence of this clone aligns with the gene accession number as a point of reference only. However, individual transcript sequences of the same gene can differ through naturally occurring variations (e.g. polymorphisms), each with its own valid existence. This clone is substantially in agreement with the reference, but a complete review of all prevailing variants is recommended prior to use. More info
OTI Annotation:	This clone was engineered to express the complete ORF with an expression tag. Expression varies depending on the nature of the gene.
Components:	The ORF clone is ion-exchange column purified and shipped in a 2D barcoded Matrix tube containing 10ug of transfection-ready, dried plasmid DNA (reconstitute with 100 ul of water).
Reconstitution Method:	<ol style="list-style-type: none">1. Centrifuge at 5,000xg for 5min.2. Carefully open the tube and add 100ul of sterile water to dissolve the DNA.3. Close the tube and incubate for 10 minutes at room temperature.4. Briefly vortex the tube and then do a quick spin (less than 5000xg) to concentrate the liquid at the bottom.5. Store the suspended plasmid at -20°C. The DNA is stable for at least one year from date of shipping when stored at -20°C.
RefSeq:	NM_001031653.1 , NP_001026823.1
RefSeq Size:	1921 bp
RefSeq ORF:	1197 bp
Locus ID:	306012
Cytogenetics:	15p11
MW:	44.4 kDa