

Product datasheet for **RR208290**

Aamp (NM_001106920) Rat Tagged ORF Clone

Product data:

Product Type:	Expression Plasmids
Product Name:	Aamp (NM_001106920) Rat Tagged ORF Clone
Tag:	Myc-DDK
Symbol:	Aamp
Vector:	pCMV6-Entry (PS100001)
E. coli Selection:	Kanamycin (25 ug/mL)
Cell Selection:	Neomycin
ORF Nucleotide Sequence:	>RR208290 representing NM_001106920 Red=Cloning site Blue=ORF Green=Tags(s)

TTTTGTAATACGACTCACTATAGGGCGGCCGGAATTCGTCGACTGGATCCGGTACCGAGGAGATCTGCC
GCC**CGATCGCC**

ATGGAGTCCGAATCGGAGAGCGGAGCGGCCGCTGACACCCCGCCTCTGGAGACTCTGAGCTTTCACGGAG
ATGAAGAGATCATTGAGGTGGTAGAGCTGGATCCAGGCCCGCCGACCCGGATGATCTGGCCAGGAGAT
GGAAGACGTGGACTTTGAGGAAGAGGAGGAAGAAGAAGAGGGCAATGACGAGGGCTGGTCTCTGGAACCC
CAAGAAGGGTGGTTCGGTAGCATGGAAGGCCCGATGACAGTGAGGTACCTTTGCATTGCACTCAGCAT
CTGTGTTTTGTGTGAGCCTGGACCCAAAACCAACACCTTGGCAGTGACGGGGGTGAAGACGACAAAGC
CTTTGTGTGGAGGCTCAGCGACGGGAGCTCCTCTTTGAGTGTGCAGGCCACAAAGACTCTGTGACATGT
GCTGGTTTCAGTCATGATCCACCCTAGTGCCACAGGGGACATGAGTGGTCTTTTGAAGTATGGCAGG
TAGAGACCAAGGAAGAAGTCTGGTCCTTTGAAGCAGGAGACCTGGAGTGGATGGAGTGGCACCCCTCGGGC
TCCTGTTCTGTTGGCCGGCACAGCTGACGGCAATACTTGGATGTGGAAGGTACCCAATGGTACTGTAAG
ACCTTCCAGGGCCCAACTGCCCTGCAACCTGTGGCCGTGTCCTCCCTGATGGAAAGAGAGCTGTGGTAG
GGTATGAAGATGGTACCATCAGGATTTGGGACCTCAAGCAAGGAAACCCATCCATGTACTGAAAGGGAC
TGAGGGTCATCAGGGCCCTCAACCTGTGTTGCCACCAACAGGATGGCAGCTTAATCCTGACTGGTTCC
GTGGACTGTCAGGCCAAGCTGGTCAAGTCCACCACTGGCAAGGTGGTGGGTGTGTTCCAGACTGAGACAG
TCGCCTCCAGCCTAGCCTGGGAGAGGGTGAAGAGAGTGAAGTCCAACCTCCGTGGAGTCTTTGGGCTCTG
CAGTGTATGCCTCTGGCCGCTGTTGGCTATCTGGATGGAACCTTGGCCATCTATGACCTGTCTACACAG
ACACTTCGGCACCAATGTGAGCACCAGTCGGGCATTGTTGAGTGTGTTGGGAGGCTGGCACTGTGTGG
TGTACACCTGTAGCCTGGACGGTGTGTACGTCTCTGGATGCCCGGACTGGCCGCTGCTTACTGACTA
CCGGGGCCACACTGCTGAGATCCTGGACTTTGCACTCAGCAAAGATGCTTCCCTGGTGGTACCACCTCA
GGAGACCACAAAGCAAAAGTATTTGTGTCCAGAGACCTGACCGT

ACGCGTACGCGGCCGCTCGAGCAGAAACTCATCTCAGAAGAGGATCTGGCAGCAAATGATATCCTGGATT
ACAAGGATGACGACGATAAGGTTTAA



[View online »](#)

Protein Sequence: >RR208290 representing NM_001106920
 Red=Cloning site Green=Tags(s)

MESESESGAAADTPPLETLSFHGDEEIIIEVVVLDPGPPDPDDLAQEMEDVDFEEEEEEEGNDEGWVLEP
 QEGVVGSMEGPDDSEVTFALHSASVFCVSLDPKTNLAVTGGEDDKAFVWRLSDGELLFECAGHKDSVTC
 AGF SHDSTLVATGDM SGLLKVWQVETKEEVWSFEAGDLEWMEWHPRAPVLLAGTADGNTWMWKPNGDCK
 TFQGPNCPATCGRVLPDGKRAVVGVEDGTIRIWDLKQGNPIHVLKGTGEHQGPLTCVATNQDGSILITGS
 VDCQAKLVSAATTKVVG VFRPETVASQPSLGEGESESNVSESLGFC SVMPLA AVGYLDGTLAIYDLSTQ
 TLRHQCHQSGIVQLLWEAGTAVVYTCSLDGVVRLWDARTGRLLTDYRGHTAEILDFALSKDASLVVTTT
 GDHKAKVFCVQRPDR

TRTRPLEQKLISEEDLAANDILDYKDDDDKV

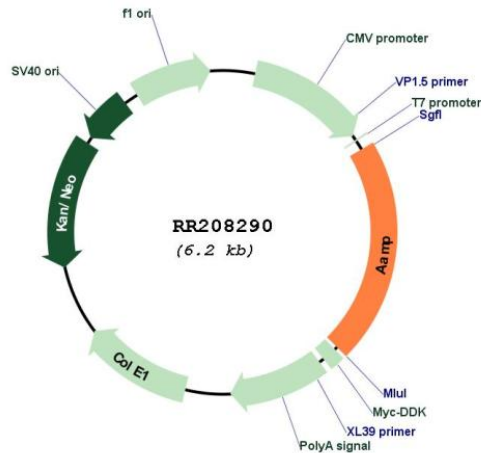
Restriction Sites:

SgfI-MluI

Cloning Scheme:



Plasmid Map:



ACCN:	NM_001106920
ORF Size:	1305 bp
OTI Disclaimer:	The molecular sequence of this clone aligns with the gene accession number as a point of reference only. However, individual transcript sequences of the same gene can differ through naturally occurring variations (e.g. polymorphisms), each with its own valid existence. This clone is substantially in agreement with the reference, but a complete review of all prevailing variants is recommended prior to use. More info
OTI Annotation:	This clone was engineered to express the complete ORF with an expression tag. Expression varies depending on the nature of the gene.
Components:	The ORF clone is ion-exchange column purified and shipped in a 2D barcoded Matrix tube containing 10ug of transfection-ready, dried plasmid DNA (reconstitute with 100 ul of water).
Reconstitution Method:	<ol style="list-style-type: none">1. Centrifuge at 5,000xg for 5min.2. Carefully open the tube and add 100ul of sterile water to dissolve the DNA.3. Close the tube and incubate for 10 minutes at room temperature.4. Briefly vortex the tube and then do a quick spin (less than 5000xg) to concentrate the liquid at the bottom.5. Store the suspended plasmid at -20°C. The DNA is stable for at least one year from date of shipping when stored at -20°C.
RefSeq:	NM_001106920.1 , NP_001100390.1
RefSeq Size:	2715 bp
RefSeq ORF:	1308 bp
Locus ID:	301512
Cytogenetics:	9q33
MW:	46.9 kDa