

Product datasheet for **RR208287**

Ap4b1 (NM_001107709) Rat Tagged ORF Clone

Product data:

Product Type:	Expression Plasmids
Product Name:	Ap4b1 (NM_001107709) Rat Tagged ORF Clone
Tag:	Myc-DDK
Symbol:	Ap4b1
Mammalian Cell Selection:	Neomycin
Vector:	pCMV6-Entry (PS100001)
E. coli Selection:	Kanamycin (25 ug/mL)



[View online »](#)

ORF Nucleotide Sequence:

>RR208287 representing NM_001107709
 Red=Cloning site Blue=ORF Green=Tags(s)

TTTTGTAATACGACTCACTATAGGGCGGCCGGAATTCGTCGACTGGATCCGGTACCGAGGAGATCTGCC
 GCC**CGCATCGCC**

ATGCCATATCTTGGCTCTGAGGACGTGGTGAAGGAACTGAAGAAGGCTCTGTGTAACCCTCATATTCAGG
 CTGATAGGCTGCGCTACCGAATGTCATCCAGCGAGTTATTAGGCACATGACTCAGGCTTGGACATGTC
 TGATGTTTTTCATGAAAATGGTGAAGGCCAGCGCCACTGTAGATATCGTTCAGAAAAAGTTGGTTTATCTG
 TATATGGGCACATATGCACCTTTAAAACCTGATCTAGCGCTCTTGGCTATCAATACACTCTGCAAAGACT
 GCTCAGACCCCAACCAATGGTGCAGGACTGGCACTACGGAGCATGTGTAGCCTCAGGATGCCTGGTGT
 ACAGGAGTATATCCAGCAGCCTGTTGTCAATGGTCTGCGGGACAAAGCTTCATATGTCAGAAGAGTGGCC
 GTCCTTGGCTGTCCAAGATGCATAATCTTCATGGAGACTCTGAAGTAGATGGTGTCTAGTCAATGAGT
 TATACAGTCTTCTGCGTGACCAGGATCCAATTGTGGTTGTGAAGTGTCTGAGGTCTCTAGAGGAAATTTT
 AAAACAGGAAGGAGGTGTTGTCATTAATAAGCCCATTGCCACCATCTCTTAAATAGAATGTCAAACTG
 GACCAGTGGGGCCAGGCTGAAGTACTGAACTTTCTGCTCCGCTACCAACCCCGCAGTGAGGAGGAACTGT
 TTGATATCCTCAATTTGTTGGACAGCTATCTCAAGAGCAGCAGCACTGGTGTGGTGTGAGGACCCAA
 ACTTTTTCTGATTTTGGCAAAAAGTTCACCCACGTACAACTGATGTGCTTGTACGAGTCAAGGGACCC
 TTGCTGGCTGCCTGTTCTTCAGAGAGCCGAGAGCTCTGCTTTGCTGCTCTCTGCCATGTCGCCCAGGTCT
 TGCATAGTTTGGCAGGTCACTTTAGCAGTCACTACAAAAGTTTTTTGCTTTACTCGGAGCCCACTA
 TATCAAGCTGCAGAAGGTGGAGGTGCTGTGCGAGCTGGTGAACGATGAGAACGTGCAGCAGGTGCTTGAA
 GAGCTGCGAGGGTACTGCACTGATGTGTCTGCTGACTTTGCACAGGCTGCCATCTTTGCTATAGTAATA
 TTGCCAAGACTTACACAGACCAATGTGTGCAGATTCTAACAGAGTTGCTGGGACTTCGACAAGAACATAT
 CACTACAGTGGTGGTGCAGACTTCCGAGACCTTGTCTGGTTATGCCCTCAGTGTACTGAAGCTGTGTGT
 CAGGCCCTGCCCGGCTGTGAGGAGAACATTCAAGACAGTGAAGGAAACAGGCACTTATCTGGTTACTTG
 GGGTCCACGGGAAAAAATCCCCAATGCTCCTTATGTGTTGGAGGACTTTGTAGAAAAGTGTGAAGTCGGA
 GACTTTTCTGCTGTTAAGATGGAGCTGCTGACGGCTCTGATGCGCCTTTTCTCTCACGCCCTGCTGAG
 TGCCAGGACGTGCTGGGACGTCTGTTGCTTTACTGCATAGAGGAAGAAAAGGATATGGCTGTACGAGACC
 GGGGTCTCTTCTATTATCGCCTCCTCTTGGTTGGCATTGATAAACTAAGCAGATCCTGTGTAGTCTTAA
 GTCTGACCCTTCTTTGGACTTTTGGAGGATCAACCAGAACGACCAGTGAATAGCTGGGCTTCAGACTTC
 AATACGCTGGCGCCAGTGTATGGCAAAGCCCACTGGGCAACTATCTCTAAATGCCAGAAGATAGAGCCTC
 ATCGCCTTGAGCTTCCCCACAATGCATCCTTTGCCACATCAGGACACTTGATTGCTGAAGAGAACAAGA
 AGGAGCACAAGAACCTCCGGACTCTGGAGCTCTCGTGCTGGTTCCCAATCTCCAGCTTACCGCTGAGTGT
 TTTGAGAAAACATGGCTTAGCCTCACAGTTTCTTACCATCAGGTGCTTCCTTGGCAGGGAGAAGTCCAGC
 CCGACACTCTACAAATGGCTCTAAAAGTAGTGAACATTCAGACATCGCAATGAGCAAGCCTGGGGCACA
 GCCCTGGAAAGCCTACCTCAGTGTCTCAGGACGGTACTGGTGGTCTCTTCTAACGGAATTGCTGTTGAAG
 CCTGAGAACTCAGAAGTGCAATCTCTGTGAAGCAGAGTGAAGCCAGGACTGAAGCCCTGCGTGGTTTCG
 TCTCTGCTCTGAAACTGTGATTGGAACGGTTGGAGACATAAAATCA

ACGCGTACGCGGCCGCTCGAGCAGAACTCATCTCAGAAGAGGATCTGGCAGCAAATGATATCCTGGATT
 ACAAGGATGACGACGATAAGGTTTAA

Protein Sequence: >RR208287 representing NM_001107709
 Red=Cloning site Green=Tags(s)

MPYLGSEDEVVKELKKALCNPHIQADRLRYRNVIRVIRHMTQGLDMSDVFMEMVKASATVDIVQKKLVYL
 YMGTYAPLKPDLALLAINTLCKDCSDPNPMVRGLALRSMCSLRMPGVQEYIQPVVNGLRDKASYVRRVA
 VLGCAKMHNLHGDSEVDGALVNELYSLLRDQDPIVVVNLRSLEEILKQEGGVVINKPIAHLLNRMSKL
 DQWQAEVLNFLRLRYQPRSEEEELFDILNLLDSYLKSSSTGVVMGATKFLILAKKFPHVQTDVLRVVKGL
 LLAACSSERELCFAALCHVRQVLHSLPGHFSSHKKFFCSYSEPHYIKLQKVEVLCENVQVLE
 ELRGYCTDVSADFAQAAIFAIGNIAKTYDQCQVQILTELLGLRQEHIITVVVQTFRDLVWLCPCQTEAVC
 QALPGCEENIQDSEKQALIWLLGVHGEKIPNAPYVLEDFVESVKSETFPAVKMELLTALMRLFLSRPAE
 CQDVLGRLLLYCIEEEKDMAVRDRGLFYRLLLVGIDKTKQILCSPKSDPSLGLLEDQPERPVNSWASDF
 NTLAPVYGKAHWATISKCKIEPHRLELPHNASFATSGHLIAEENKEGAQEPDSDGALVLPNLQLTAEC
 FEKTLWLSLTVSYHQVLPWQGEVQPTLQALKVVNIQTIAMSKPGAQPWKAYLSAQDGTGGLFTELLK
 PENSEVQISVKQSEARTEALRGFVSVLETVIGTVGDIKS

TRTRPLEQKLISEEDLAANDILDYKDDDDKV

Restriction Sites:

SgfI-MluI

Cloning Scheme:

Cloning sites used for ORF Shuttling:



* The last codon before the Stop codon of the ORF

ACCN: NM_001107709

ORF Size: 2217 bp

OTI Disclaimer: The molecular sequence of this clone aligns with the gene accession number as a point of reference only. However, individual transcript sequences of the same gene can differ through naturally occurring variations (e.g. polymorphisms), each with its own valid existence. This clone is substantially in agreement with the reference, but a complete review of all prevailing variants is recommended prior to use. [More info](#)

OTI Annotation: This clone was engineered to express the complete ORF with an expression tag. Expression varies depending on the nature of the gene.

Components: The ORF clone is ion-exchange column purified and shipped in a 2D barcoded Matrix tube containing 10ug of transfection-ready, dried plasmid DNA (reconstitute with 100 ul of water).

- Reconstitution Method:**
1. Centrifuge at 5,000xg for 5min.
 2. Carefully open the tube and add 100ul of sterile water to dissolve the DNA.
 3. Close the tube and incubate for 10 minutes at room temperature.
 4. Briefly vortex the tube and then do a quick spin (less than 5000xg) to concentrate the liquid at the bottom.
 5. Store the suspended plasmid at -20°C. The DNA is stable for at least one year from date of shipping when stored at -20°C.

RefSeq: [NM_001107709.1](#), [NP_001101179.1](#)

RefSeq Size: 2921 bp

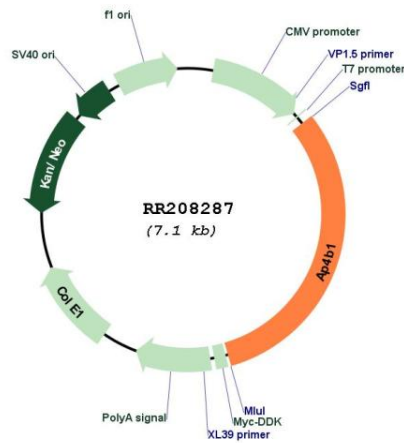
RefSeq ORF: 2220 bp

Locus ID: 310746

Cytogenetics: 2q34

MW: 82.7 kDa

Product images:



Circular map for RR208287