

Product datasheet for **RR208282**

Trmt44 (NM_001130061) Rat Tagged ORF Clone

Product data:

Product Type:	Expression Plasmids
Product Name:	Trmt44 (NM_001130061) Rat Tagged ORF Clone
Tag:	Myc-DDK
Symbol:	Trmt44
Synonyms:	Mettl19; RGD1308380
Mammalian Cell Selection:	Neomycin
Vector:	pCMV6-Entry (PS100001)
E. coli Selection:	Kanamycin (25 ug/mL)



[View online »](#)

ORF Nucleotide Sequence:

>RR208282 representing NM_001130061
 Red=Cloning site Blue=ORF Green=Tags(s)

TTTTGTAATACGACTCACTATAGGGCGGCCGGAATTCGTCGACTGGATCCGGTACCGAGGAGATCTGCC
 GCC**GCGATCGCC**

ATGGAGGAGCTCCGTAGAGTGCCCTAGACGACCCTGATTCTCTGCTACCCGGAGGTTTCTGGGCCGCC
 TTACCGTGTGGCTGGAGAGGCCACAGGTGGCCAACAAGAGGCTGTGTGGCGCCGCATAGAAGCCCGTGG
 GAGAACTTTGCGGCCAGTGCCAGCGGAGTGTGGACCGCGCAGGGACAGGGGCACGGCTGGAGAGG
 GAACCGGACAGGGATCTAGGGCGACCGGAAGGCACCCTCCCGCGGCTGACCTGGACTTGCTATGGA
 ACCGAGTCTCCAAAGCCTCGTCCACTCCAATCCGAAATACTGACCTTCTATGGCCCTCGTTGGGTTT
 TCCTCCTGAAGCCGCGCAGGAGCTCGACCTGGTTCTCAGAACCGTCATCCGAAAGCGAGCCCTCACTTC
 CCCTTTACAGAGCCGAAGAAAGAACTGGTGGTCAAGATGTTTCCAGTGGGAGTGCACCTTTTTGCCCT
 TGAAGAAGATAATGAGGAGAATTTGGAGGTTAAATGAGCAATGTGTATCAGCTCCGTCTCCATCACAG
 CGAAGGAGAATGGTTCATATCTGTTTTAATTTCTGTCCAGAGAGGTGGCATTCCGATGGTGTGTCTAC
 CCCAAGCCTACCTGGCTTGCAGAAGAACTGCTGTCCAAGCTGGCCAGGTGGGCAGTGGAGAACAGGAAGA
 GCGAGTTTAAAAGCACACTTTCCCTGGTCTCCGTCTGCGCTATGGCAGGATGTACCAGGAGCTCAAAGA
 GAAGTACAGAGACATGGTAAAGTTTGGCCTGAAGTAACCGATCCTGAAAAGTTTGTATATGAAGATGTG
 GCCATCGTACATACCTGTTGATCCTATGGGAAGAGGAGAGGGCTGAGAAGGGCATCACCAAGCAGT
 CTTTCGTGGACCTGGGGTGTGGAATGGCCTTCTGGTCCACATCCTGAGCAACGAGGGGCATCCAGGCAG
 AGGGATTGATGTCCGAAGAAGAAAAATCTGGGACATGTATGGACCCAAACTCAGCTGGAGGAAGTTCC
 ATCACTCCAAGTGACAAGACACTGTTCCCTGGTGTGACTGGCTGATTGGTAACCATTCTGATGAGCTCA
 CCCCCTGGATCCCTGTCATTGCAGCCAGGTCTTCTACACTGTGCGTTCTTCGTCCCTGCCCTGTGTTT
 TTTTGACTTTGTAGGGCGATACCGGCGGCGCAAGCAAGAAGACACAGTACCGAGAGTACCTGGACTTC
 GTGCTGGAGGTGGGGCTCTCCTGTGGCTTCCACGTACAGGAGGACTGCCTCAGGATTCCTGCTACCAAGC
 GGGTCTGCCTCATTGGGAAATCCAGAACATACCTGCCTTCTGCAGAGGTCTGGATGGATGAGCAGAGAAC
 ACGATACCTGCACAGCAGACAGGGCCTTCCACAGAGCCTGCCTGGTGGGGGACATGCACCTTCTGTACCC
 CAGATTGCTGCTCAGATGACGATGCTGGTCACCAGGACAGTACAGGACCTTTGATGCTGGGGCTGAGT
 GCATGCCAGAGGGCCTGGCTGCTGAGCGAGGAACAGGAGCCCCAGCCACAGGACTCTGGGTGCCTGGGT
 CTGCCCTAGAGAAAAGGCTGAGCGTGTGAGGAATTGTGCTGCTCCCTCGAGACTTCATTGACCAAGT
 GTTTTACAGGTGGCAAACCTGTTGTTAGATGGAAGAGGTTCAACACGGGAAACTCTGAAGCCGGGAGTC
 TGAAGACCTGGAATGGAGGAGGGAGCCTTTCCTTGGCAGAAGTGCTGCAGAATAAAGCTCAGAAACGCT
 GCAGCAGCTGAAGCGGGAGTGTGGAGGCCTACAGACCCTGCTCAGGAATAGCCATCAGGTGTTTGAAGT
 CTGAATGGGCGAGTTCACATCCGTGACTGGCGGCGGGAGCTGCAGAGGGAAAAGCCTCCAGAAGGCAAGA
 GGAGCCTGTCTGCAGAGGTGTTCAAGACTCGAATCTGCTGGTTCTTCACTCACCACCTGATGGTTGTGT
 ACTGCCTGCTGCCTGTTGCCCTTTGCGCATGGGCTGGAAGAGCTGCGCCCGTCTCAGACCTTGAAGAAG
 CAGAGGCAGGCTCCC

ACGCGTACGCGGCCGCTCGAGCAGAAACTCATCTCAGAAGAGGATCTGGCAGCAAATGATATCCTGGATT
 ACAAGGATGACGACGATAAGGTTTAA

Protein Sequence: >RR208282 representing NM_001130061
 Red=Cloning site Green=Tags(s)

```
MEELRRVPLDDPDSLPGGFWAAVTVWLERPQVANKRLCGARIEARGRTLRPSAQAECPGPRQGQGHGLER
EPGQGSRADREGTAPAADLDLLWNRVSQSLVHSNPEILTFYGPSTLGGSPPEAAQELDLVLRVTPKASPHF
PFTEPKKELVVQDVSSGSVTFLLPLEEDNEENLEVKMSNVYQLRLHHEGEWFI SVLIFC PERWHSDGVVY
PKPTWLAEELL SKLARWAVENRKSEFKSTLSLVSVLRYGRMYQELKEKYRDMVKVWPEVTDPEK FVYEDV
AIATYLLILWEEERAKEGITTKQSFVDL GCGNGLLVHILSNEGHPGRGIDVRRRKIWDMYGPQTQLEEGS
ITPSDKTLFPGVDWLGHNHDELTPWIPVIAARSSYTCRFFVLPCCFFDFVGRYRRRQSKKTQYREYLDL
VLEVGLSCGFHVQEDCLRIPSTKRKRVCLIGKSRTYLP SAEVWMDEQRTRYLHSRQGLPQSLPGGGHAPSVP
QIAAHDDDDAGHQDSHRTFDAGAECMPEGLAAERGTGAPATGLWVPGFCPREKAERVRNCAALPRDFIDQV
VLQVANLLLDGKRFNTGNSEAGSLKTWNGGSLSLAEVAAELNSETLQQLKRECGGLQTLRNSHQVFV
LNGRVHIRDWRRELQREKPPGKRSLSAEVFKTRICWFFTHHPDGCVLPAAACCPFAHGLEELRPSQTLKK
QRQAP
```

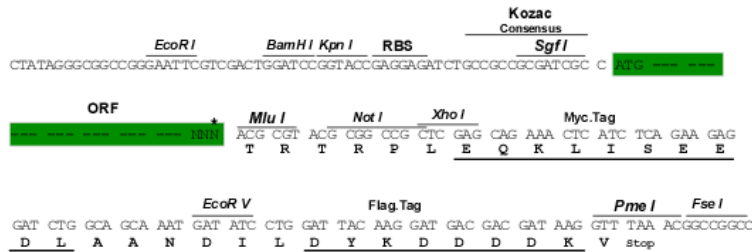
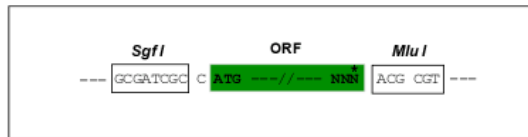
TRTRPLEQKLI SEEDLAANDILDYKDDDDKV

Restriction Sites:

SgfI-MluI

Cloning Scheme:

Cloning sites used for ORF Shuttling:



* The last codon before the Stop codon of the ORF

ACCN: NM_001130061

ORF Size: 2115 bp

OTI Disclaimer: The molecular sequence of this clone aligns with the gene accession number as a point of reference only. However, individual transcript sequences of the same gene can differ through naturally occurring variations (e.g. polymorphisms), each with its own valid existence. This clone is substantially in agreement with the reference, but a complete review of all prevailing variants is recommended prior to use. [More info](#)

OTI Annotation: This clone was engineered to express the complete ORF with an expression tag. Expression varies depending on the nature of the gene.

Components: The ORF clone is ion-exchange column purified and shipped in a 2D barcoded Matrix tube containing 10ug of transfection-ready, dried plasmid DNA (reconstitute with 100 ul of water).

Reconstitution Method:

1. Centrifuge at 5,000xg for 5min.
2. Carefully open the tube and add 100ul of sterile water to dissolve the DNA.
3. Close the tube and incubate for 10 minutes at room temperature.
4. Briefly vortex the tube and then do a quick spin (less than 5000xg) to concentrate the liquid at the bottom.
5. Store the suspended plasmid at -20°C. The DNA is stable for at least one year from date of shipping when stored at -20°C.

RefSeq: [NM_001130061.1](#), [NP_001123533.1](#)

RefSeq Size: 3136 bp

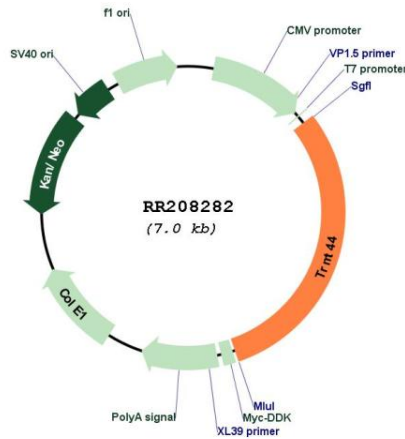
RefSeq ORF: 2118 bp

Locus ID: 305443

Cytogenetics: 14q21

MW: 79.5 kDa

Product images:



Circular map for RR208282