

Product datasheet for **RR208276**

Tbl1x (NM_001106964) Rat Tagged ORF Clone

Product data:

Product Type:	Expression Plasmids
Product Name:	Tbl1x (NM_001106964) Rat Tagged ORF Clone
Tag:	Myc-DDK
Symbol:	Tbl1x
Synonyms:	RGD1563868
Vector:	pCMV6-Entry (PS100001)
E. coli Selection:	Kanamycin (25 ug/mL)
Cell Selection:	Neomycin



[View online »](#)

ORF Nucleotide Sequence:

>RR208276 representing NM_001106964
 Red=Cloning site Blue=ORF Green=Tags(s)

TTTTGTAATACGACTCACTATAGGGCGGCCGGAATTCGTCGACTGGATCCGGTACCGAGGAGATCTGCC
 GCC**CGGATCGCC**

ATGAGCATTACCAGCGACGAGGTGAACCTTCTGGTATATCGCTACCTCCAGGAATCAGGTTTTTCCATT
 CCGCCTTCACGTTTGGGATCGAAAGCCACATTAGCCAGTCCAACATCAATGGTACACTAGTGCCACCGGC
 TGCCCTAATCTCCATTCTTCAGAAAGGACTGCAATATGTGGAGGCGGAGATCAGCATCAACGAGGATGGC
 ACGGTATTTGATGGGCGTCCCATTGAGTCCCTATCGTTAATTGATGCTGTGATGCCCGATGTGGTACAGA
 CAAGACAGCAAGCTTTTCGGGAGAAGCTCGCCCAACAGCAAGCCAATGCAGCAGCTGCAGCAGCAGCAGC
 CGCAGCCACAGCCACAAGCACAGCGGCCACAACACCAGCAGCTGCTGCTCAGCAAAACCCACAAAGAAT
 GGAGAAGCCACCGTGAATGGGGAAGAAAATGGAGCCCATGCAATAAATAACTCAAAACCAATGGAAA
 TAGATGGAGACGTTGAAATTCACCGAGTAAAGCCACAGTCTTCGAGGCCATGAGTCTGAAGTGTTCAT
 TTGTGCCTGGAATCCTGTTAGTGACCTACTTGCTTCTGGATCTGGAGACTCTACTGCGAGGATATGGAAC
 CTTAATGAGAACAGCAACGGGGCTCCACACAGCTTGTGCTGAGGCACTGCATCCGTGAAGTGGACATG
 ATGTTCCAGTAATAAGGATGTCACCTCATTGGACTGGAATAGCGATGGGACACTGTTGGCAACAGGTTT
 CTATGATGGTTTTGCAAGAATATGGACAGAAGATGGTAACCTAGCCAGCACCTTGGGCAACACAAAGGC
 CCCATCTTTGCCTTGAAGTGGAAACAAAAGGGGAATTATATTTTGGTGTGGTGTAGACAAGACAACAA
 TAATTTGGGACGCCACACAGGAGAAGCCAAACACAGTTTCTTTTTCATTACAGCACCTGCCCTTGTGT
 GGACTGGCAGAACAACACTACCTTTGCCTCGTGCAGCACAGACATGTGCATTCATGTGTGACGGCTTGGC
 TGTGATCGCCAGTCAAAACCTTCAAGGACATACTAATGAGGTCAATGCATCAATGGGATCCTTCTG
 GAATGTTGCTAGCCTCCTGCTGTGATGACATGACATTAAGATCTGGAGTATGAAGCAGGATGCATGTG
 CCATGACCTCCAAGCTCACAGCAAAGAGATATATACCATCAAGTGGAGTCCACAGGACCAGCCACCAGC
 AACCCGAACCTCAACATCATGTTAGCAAGTGTTCATTTGACTCTACGGTTCGACTGTGGGATGTGGAGC
 GAGGCGTTTGCATCCACACACTGACCAAGCATCAGGAGCCTGTCTATAGTGTAGCGTTACGCCCTGACGG
 AAAGTATTTGGCCAGTGGATCCTTTGACAAGTGTGCCATATCTGGAATACTCAGAGTGGAAAGTCTCGTC
 CACAGCTACCGAGGAACAGGCGGCATATTTGAGGTGTGCTGGAATGCTCGAGGAGACAAAGTGGGTGCCA
 GTGCATCTGATGGCTCTGTCTGTGTTTTAGATCTCCGAAAG

ACGCGTACGCGGCCGCTCGAGCAGAAACTCATCTCAGAAGAGGATCTGGCAGCAAATGATATCCTGGATT
 ACAAGGATGACGACGATAAGGTTTAA

Protein Sequence:

>RR208276 representing NM_001106964
 Red=Cloning site Green=Tags(s)

MSITSDEVNFLVYRYLQESGFSSAFTFGIESHISQSNINGTLVPPAALISILQKGLQYVEAEISINEDG
 TVFDGRPIESLSLIDAVMPDVVQTRQQAFREKLAQQQANAAAAAAAAAATATSTAATPAAAAQQNPPKN
 GEATVNGEENGAAHAINNHKPMIDGDVEIPPSKATVLRGHESEVFIGAWNPVSDLLASGSGDSTARIWN
 LNENSGGSTQLVLRHCIREGGHDVPSNKGDTSLDWNDSGTLATGSYDGFARIWTEGDLNLAATLQGHK
 PIFALKWNKGNILSAGVDKTTIWDHHTGEAKQFPFHSAPALDWDWQNTTFASCSTDMCIHVCRLG
 CDRPVKTFQGHTEVNAIKWDPGMLLASCSDMTLKIWSMKQDACVHDLQAHSKEIYTIKWSPTGPATS
 NPNSNIMLASASFDSTVRLWDVERGVCIHTLTKHQEPVYSVAFSPDGKYLASGSFDCVHIWNTQSGSLV
 HSYRGTGGIFEVCWNARGDKVGSASDGSVCVLDLRLK

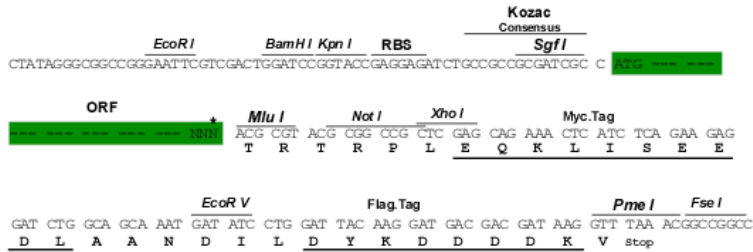
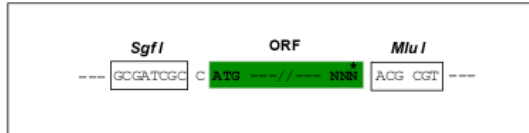
TRTRPLEQKLISEEDLAANDILDYKDDDDKV

Restriction Sites:

Sgfl-MluI

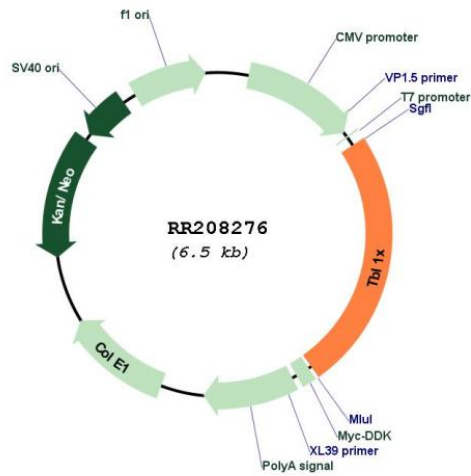
Cloning Scheme:

Cloning sites used for ORF Shutting:



* The last codon before the Stop codon of the ORF

Plasmid Map:



ACCN:	NM_001106964
ORF Size:	1581 bp
OTI Disclaimer:	The molecular sequence of this clone aligns with the gene accession number as a point of reference only. However, individual transcript sequences of the same gene can differ through naturally occurring variations (e.g. polymorphisms), each with its own valid existence. This clone is substantially in agreement with the reference, but a complete review of all prevailing variants is recommended prior to use. More info
OTI Annotation:	This clone was engineered to express the complete ORF with an expression tag. Expression varies depending on the nature of the gene.
Components:	The ORF clone is ion-exchange column purified and shipped in a 2D barcoded Matrix tube containing 10ug of transfection-ready, dried plasmid DNA (reconstitute with 100 ul of water).
Reconstitution Method:	<ol style="list-style-type: none">1. Centrifuge at 5,000xg for 5min.2. Carefully open the tube and add 100ul of sterile water to dissolve the DNA.3. Close the tube and incubate for 10 minutes at room temperature.4. Briefly vortex the tube and then do a quick spin (less than 5000xg) to concentrate the liquid at the bottom.5. Store the suspended plasmid at -20°C. The DNA is stable for at least one year from date of shipping when stored at -20°C.
RefSeq:	NM_001106964.1 , NP_001100434.1
RefSeq Size:	5067 bp
RefSeq ORF:	1584 bp
Locus ID:	302711
Cytogenetics:	Xq21
MW:	56.8 kDa