

Product datasheet for **RR208272**

Fanca (NM_001108455) Rat Tagged ORF Clone

Product data:

Product Type: Expression Plasmids
Product Name: Fanca (NM_001108455) Rat Tagged ORF Clone
Tag: Myc-DDK
Symbol: Fanca
Vector: pCMV6-Entry (PS100001)
E. coli Selection: Kanamycin (25 ug/mL)
Cell Selection: Neomycin
ORF Nucleotide Sequence: >RR208272 representing NM_001108455
Red=Cloning site Blue=ORF Green=Tags(s)

TTTTGTAATACGACTCACTATAGGGCGGCCGGAATTCGTCGACTGGATCCGGTACCGAGGAGATCTGCC
 GCCCGATCGCC

ATGCCTCAGGTCGCTGCTGATGTTCTGCAGAGAATGCTGGCTTTTCACTCGATACCTGGATGCTGATT
 CGCAGACGACTTTGGATCACCAGGCCGTGAGTGGCTGGATCACTGTGTACTCTGGACGTACGTGCTGTGG
 TATGATAGCAGCTGATTCTCTGAAGAGCTTCCTCAGTCACGCGCTAACTCAGATTCTGACTCACAAGCCC
 GTGCTGAAAGTGTCTGACGCCATTCAAATGCAGAAAGAGTGGAGCTTTGCAAAGACACCCCATCTGCTCA
 TTGATCTGTACTGCAGGGTTTTTGTGACTGGTCCAGAGGAGTCAATTGGCCATTTGCAGGAAGTTCT
 GGAGCTGCAGGAGGTTAACTGGCAACACGTGCTGTCTGTGTCTACACTGGTTGTCTGCTTTTCTGAG
 GCACAGCAGCTGATTAAGATTGGGTGGCTCTTTGATGGCCCGGCCCTTGAGAGCTACCACCTAGACA
 GCATGGTCACTGCCTTCTGATTGTGCGCCAGGCTACTCTGGAAGGCCCTACGTATCCCGTCTACGC
 AGATTGGTTCAAGGAGTCTTTGGAAGCTCACATGGCTACCATAGCTGCAGCAAGAAGACTGGTCTTC
 CTCTTCAAATTCCTGTCTGACCTCGTGCCTGGGAAGCCCCTCGGCACATGCAGGTGCACATTTCCACC
 CACCCCTGGTGCCAAGCAAGTACCCTCTGCTCACAGACTACATCTCCTTGGCCAAGACAAGGCTTGC
 TGACCTCAAGTTTTCCCTGGAGAATGTAGGACTCTACGAGGATTTGTCATCCACCGGGGACATTGCTGAG
 CGTGAGAGCCAGGCAGTCCAGGATGTTAAGAAGGCCATCATGGTGTTTGAACAAACAGGGAAGATCCCTA
 TGCTGTCTGGAGGCCAGTATCTTCAGGAGGCCCTACTACCTGTGCACTTCTCCCTGCGCTGCTCGC
 ACCGAGAGTGTCCCAGGAGTTCCTGACTCTCGGGTGGCTTCATAGAGACCCCTGAAGAGAGCAGATAAG
 ATTCCTCCCGTTCATACAGTGCCTACCGCAAGCCTGTGCCACTGCTGGGGACAAGCAGCCCGACAACA
 CCACCTCGGGACAAGGACAGAAACCAACTGTGCTGAACGGCCCTGGGACTGCTCACGGCAGCACTGGA
 GGAGCTCAGAGCTCTAATGACAGACCCCACTAATACAGTGTATATCTGCTCAGGTGGCTGTGGTTTCT
 GAAAGACTAAATGCTGCTCTGGGACACAGGAACGATGATGTCAGCCTCCGGAGATCAAAGATTCAGC
 TCAGTGTCTTCTGCCCACTCCAGAGTCAGGACCAGGGGTTGTGGATCTCCTGCTCACAGCCTTCTG
 TCAGAACCTAATGGCAGCCTGTAGCTTTGTGCCCCAGAGAGGCAGAGCTCCTGGCTGTCTTTTCTG
 AGGACCTTTGTGGACACATGCTCCTCCCGCAGTGTCTACTCGGCTGTGCCAGTGTCTCCGCCACCAGG
 GTCCAACTTGAGTGCCCTCACGTACTGGCTTGGCTGCTTTGCTGTCCATCTGGCGAGTGCAGGTC
 CACTTCCAGAGGTGGATCCAGGTGTTCTCGCTCCTCCAGCAGCCTCTGCGTCCCTGACTTCTTAAAC



[View online »](#)

AGCCTCTGACCTGCCACACGAGGGACTCTCTGCTTCTGCATGAAATCTGCACAGCAATTTCTT
 ACTGTTTATGCAAGTTCTCTGCTCAGCCCTCTGCTCCCTGCACAATTGTTTGTCTCCAGGTCTGATCCA
 AAAGTTTCAGTTCAATTGTGTTAAGATTGTTCCAGAGGCCAGAGCACCTTGCAGTCCAGAGCACACAGCT
 CGCATTCCCTGAAAATTCTGTATCTTCTTCTGCAGACTGGCCGAGAGCTGCGCTCTCTGTGGAGAT
 GGAGCAGCTTCCAAGAGCTGTTAAAGGAGGAGGAATTTCAATTAACCTACAGAGATTGGATTCAAGTTGGA
 ACTGAAAATCAACCTGAAGCTGATGCCCTCTCAGGCACAGAAAGACATGACTCCACCAGTGGGCAATC
 TATGAGCGCTACCTGCCAGCCGTGACCTATGGGAGGCTGTGGTGGGGACCTGGAGCGCGCTGCACAG
 TCCTTGTGACGAGCTCATGGACTTCCACCAAAGGAGTTACAACCACTCAGAGGACTCTGATCTGGTTCT
 TGGTGGCCGCACAGAAAACGAGGATCTTCTTTCTAGACTACAGGAGATGGCTATGGACCTGGAGCTTGAT
 CAAGTTCTGCTGTGCCCGTGGCTGTTCTACTCTGAGAGTCACTTTCTTTTCGGGTGTTTCAGAGGAC
 GGCTGCAAGCTTTGGCAAGGCCAGGCAGCATGGCTACCAGCCTTAGGAGACAGCAGGAAGTCTCATATG
 CAAACGGCTTCTCTCCGTCTGCCTCCCTCTGTCTTGTGGCAGCCCCAGGCCGGAACCTGTCTCC
 CCGAAGTGTGAAGAGTTCTTAACTGGTCACTCTGGGTTGAGAAACATCTGTTGCCACGGCAGTGTCC
 TGACCTACGACCTTACCATCCACTTCTCAGGGGGCTCCTCAATGTGTCTCCGAAGTCAAGACCCGGC
 GCTGGTGGCAACCGCACACTGGCAGAATGCCAGACTAAGTGTCCATGATTCTGACTTCAGCACTGCTG
 TGGTGGTCAAGCCTGGAACCGGTGTTGTGTAGTCAAGTGAAGAAATGCTATCAGAGCACACTGCCTCAAG
 AGCTGCAGAGGCTACAGGAAGCCCGAAGTTTGCTAGCAATTTCCCTCCGATTACGCGGCCAGCACC
 CAGCCCCGCTGGATCTCAGCTGCTGACTGTACTTTGCAACTAGAGAAGCTGGGAGGAAAAATGTCACA
 ACACATCTGAAGAGGCTAGACTGCGAAAGAGAGGAGCTCCTGATCACCTCCTCTTTTCTTCTGATGG
 GGCTACTCTCGTCTACCTGACCAACGGGACACCGCTGAGTACCAGAAGGCTGTGGACATCTGTGCTGA
 GGCTCTCGCTGTTTGGAAAGACGGAAGGTGCTGGCTGATGCTTCCAGTTGGCAGAGACGGATGCC
 AAGCTAGGGCACCTCCTTCTTGGCCCCAGACCAGCACACCAGGCTGCTACCCTTGTCTTACAGTC
 TCCTCTCTGCTCAGTACGCTTACCCTGTGAGTGGGAAACAGGATTGTTTACCTCAGCGCAGAGAAGCATC
 CCTCAAAGTGGTACAGCTCTTTGTGGATGGGAAACAGGATTGTTTACCTCAGCGCAGAGAAGCATC
 TCCGAGCTCCAGGATAGCCCTGTACAAGTATAACAAAGGCACGAGTTTTCTGTTGCAGCTAATACCTC
 AGTGTCCGAGACAGTGTCTTCCAACTGACAGAGCTGCTGGCTGGTCCGAGGAGACTGTGACCTGAGGT
 GAGCAACGCCCTCCAGCAAAGGCAGCAGGCTGGCCCCAGCTTTGACCTCTCCAGGAGCCTCATCTGTT

ACGCGTACGCGGCCGCTCGAGCAGAAACTCATCTCAGAAGAGGATCTGGCAGCAATGATATCCTGGATT
 ACAAGGATGACGACGATAAGGTTTAA

Protein Sequence:

>RR208272 representing NM_001108455
 Red=Cloning site Green=Tags(s)

MPQVAADVLRMLAFSLDTLDADSQTTLDHQAVSGWITVYSGRTCCGMIAADSLKSFSLHALTQILTHKP
 VLKVSDAIQMQKEWSFAKTPHLLIDL YCRVFTLGP EESIGHLQEVLELQEVNQQHVLSCVSTLVVCFSE
 AQLLIKDWVASLMARAFESYHLD SMVTAFLIVRQATLEGPYVFP SYADWFKESFGSSHGYHSCSKKTLVF
 LFKFLSDLVPWEAPRHMVHI FHPPLVPSKYHSLLDYISLAKTRLADLKVSL ENVGLYEDLSSTGDI AE
 RESQAVQDVKKAIMVFEQTGKIPMPVLEASIFRRPYL SHFLPALLAPRVLPEVPDSRVAFIETLKRADK
 IPPSSYSAYRQACATAGDKQPDNTTSGQRTE TNAERPLGLLTAALEELRALMTDPTQYSVISAQVAVVS
 ERLNAALGHRNDDVSLRRSKIQLSVLLPTLQSQDQGVVDLLLTAF CQNLMAACSFVPPERQSSWAVL FV
 RTL CGHMLLPAVLTRLCQLLRHQGNLSAPHV LGLAALAVHLGECRSTLPEVDPGVLAPPSSLCVPDFLN
 SLLTCHTRD SLLFCMKFCTAAISYCLCKFSAQPSASLHNCLSPGLIQKFQFIVLRLFPPEARAPCSPEHTA
 RIPWKL LYLPSADWPRAALSLWRWSSFQELLKEEFHLYRDW IQLELEIQPEADALSGTERHDFHQWAI
 YERYLPAPSAMGGCGDLEAACTV LVSELMDFHQRSYNHSESDSLV LGGRTGNEDLLSRLQEMAMDLELD
 QGS AVPRGCTPESHFLFRVFRGRLQALARPGSMATSLRRQELLICKRLLLRLPPSVLVGSPQAGQPVS
 PNC EEFNLVTSGLRNICCHGSVLT YDLTIHFFRGLLNVLRSQDPALVANRTLAECQTKCPMILT SALL
 WWSLEPVLCSQWKCYQSTLPQELQRLQEARKFASNFASDSAAPAPSPAWISAAALYFATREAGRENT
 THLKRLDCEREELLITLLFFSLMGLLSSYL TQRDTAEYQKAVDICA EVLA CLERRKVSWM LMFQLAETDA
 KLGHLLLLAPDQHTRLLPLAFYSLLSCFSDGTTVREAAF LHVAVDMYKLVQLFVDGETRIVLPQASRSI
 SELQDSPVQLITKARSFLLQLIPQCPRQCF SNMTELLAGRGDCDPEVSNALQQRQQAGPSFDLSQEPHLF

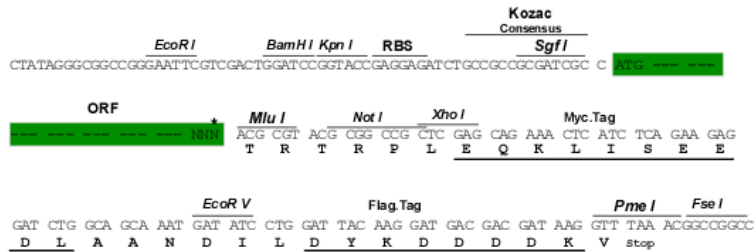
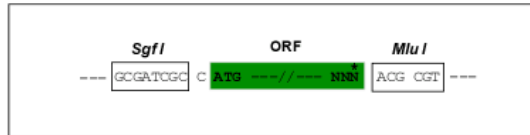
TRTRPLEQKLISEEDLAANDILDYKDDDDKV

Restriction Sites:

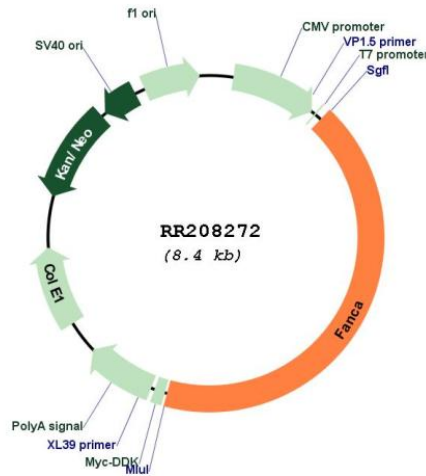
Sgfl-MluI

Cloning Scheme:

Cloning sites used for ORF Shuttling:



* The last codon before the Stop codon of the ORF

Plasmid Map:


ACCN: NM_001108455

ORF Size: 3570 bp

OTI Disclaimer: The molecular sequence of this clone aligns with the gene accession number as a point of reference only. However, individual transcript sequences of the same gene can differ through naturally occurring variations (e.g. polymorphisms), each with its own valid existence. This clone is substantially in agreement with the reference, but a complete review of all prevailing variants is recommended prior to use. [More info](#)

OTI Annotation: This clone was engineered to express the complete ORF with an expression tag. Expression varies depending on the nature of the gene.

Components: The ORF clone is ion-exchange column purified and shipped in a 2D barcoded Matrix tube containing 10ug of transfection-ready, dried plasmid DNA (reconstitute with 100 ul of water).

Reconstitution Method:

1. Centrifuge at 5,000xg for 5min.
2. Carefully open the tube and add 100ul of sterile water to dissolve the DNA.
3. Close the tube and incubate for 10 minutes at room temperature.
4. Briefly vortex the tube and then do a quick spin (less than 5000xg) to concentrate the liquid at the bottom.
5. Store the suspended plasmid at -20°C. The DNA is stable for at least one year from date of shipping when stored at -20°C.

RefSeq: [NM_001108455.1](#), [NP_001101925.1](#)

RefSeq Size: 4513 bp

RefSeq ORF: 3573 bp

Locus ID: 361435

Cytogenetics: 19q12

MW: 133 kDa