

Product datasheet for **RR208239**

Psm3 (NM_001008281) Rat Tagged ORF Clone

Product data:

Product Type:	Expression Plasmids
Product Name:	Psm3 (NM_001008281) Rat Tagged ORF Clone
Tag:	Myc-DDK
Symbol:	Psm3
Synonyms:	MGC94658
Vector:	pCMV6-Entry (PS100001)
E. coli Selection:	Kanamycin (25 ug/mL)
Cell Selection:	Neomycin



[View online »](#)

ORF Nucleotide Sequence:

>RR208239 representing NM_001008281
 Red=Cloning site Blue=ORF Green=Tags(s)

TTTTGTAATACGACTCACTATAGGGCGGCCGGAATTCGTCGACTGGATCCGGTACCGAGGAGATCTGCC
 GCC**CGGATCGCC**

ATGAAGCAGGAGGGCTCGGCGCGGCCGAGGCGCCGACAAGGCCAAGCCGCCCGGGAGGGGAACAAG
 AACCGCCGCCCGGCCCCAGGATGTGGAGATGAAAGAGGAGGAGCAGCAGCTGGGAGCGGCTCCGCGGG
 GGAAGGAGACGGCAAGGCAGCTGCGACCGAGCACTCCAGCGAGAGTTGGACTGTACACCTTAGAAGAC
 ATCAAAGAGCATGTGAGACAGCTAGAGAAGGCTGTTCCGGCAAGGAGCCTCGGTTCTGTGATGAGGGCAC
 TGCGGATGCTGCCATCCACGTACGACGCCCTCAACCACTATGTTCTGTATAAGGCCGTGCATGGCTTCTT
 CACCTCCAATAACGCCACTCGAGATTTCTTGTACCTTCTAGAAAGCCATGGACACAGAGGGCCGAC
 CTACAGTTCGCTCCTCGCACAGGAAAAGCTGCGTGGCGCCCTCCTGCCTGAGGTGGAAGCCTATCTCC
 AGCTGCTCATGGTCATCTTCTGATGAACAGCAAGCGCTACAAAGAGGCACAGAAAATCTCTGACGACCT
 GATGCAGAAGATCAGCACTCAGAACCAGCGAGCCTGGACCTCGTAGCTGCAAAGTGTACTATTACCAC
 GCCCGGTCTACGAGTTCCTGGACAAGCTGGATGTGGTGCAGCTTCTTGCATGCCCGGCTCCGGACAG
 CCACCTCCGGCACGATGCTGACGGACAGGCTACCCCTTTGAACCTTTGCTTCGGAATTACCTACATTA
 CAGCTTGTATGACCAGGCTGAGAAGCTAGTGTCCAAGTCTGTGTTCCCGAACAGGCTAACAAATGAG
 TGGGCCAGGTACCTCTACTACACAGGGCAATCAAGGCTATCCAAGTGGAGTACTCTGAAGCCGGAGAA
 CGATGACCAATGCCCTTCGAAAGGCACACAGCACACAGCAGTTGGCTTCAAACAGACGGTGCACAAGCT
 TCTGATTGTGGTGGAGCTGCTGCTGGGGAGATCCCAGACCGCTGCAGTTCGCTCAGCCCTCCCTAAAG
 CGCTCTCTATGCCCTACTTCTTCTCACCAAGCTGTTAGGACAGGAAATCTTGCCAAGTTCACCAAA
 TCCTGGATCAGTTTGGGGAGAAGTTTCAAACAGATGGGACCTACACCCTAATTATCCGACTCGCAGCAA
 TGTGATTAAGACAGGTGTGCGTATGATCAGCCTGTCTATTCCCGTATCTCCCTGGCGGACATCGCCAG
 AAGCTGCAGCTGGACAGCCAGAAGATGCAGAGTTCATTGTGCGCAAGGCTATCCGGGATGGTGTATTG
 AGGCCAGCATCAATCATGAGAAGGGATACGTCCAATCCAAGAGATGATTGACATCTACTCCACCCGGGA
 ACCTCAGCTGGCTTCCACCAGCGCATCTCCTTCTGCCTGGACATCCACAACATGTCCGTCAAGGCCATG
 CGCTTCCCCCAAATCTACAACAAGGACCTGGAGTCTGCAGAGGAACGGCGTGAGCGGGAGCAGCAGG
 ACTTGGAGTTGCCAAGGAGATGGCGGAGGATGACGACGACAGCTTCCCT

ACGCGTACGCGGCCGCTCGAGCAGAACTCATCTCAGAAGAGGATCTGGCAGCAAATGATATCTGGATT
 ACAAGGATGACGACGATAAGGTTTAA

Protein Sequence:

>RR208239 representing NM_001008281
 Red=Cloning site Green=Tags(s)

MKQEGSARRRGADKAKPPPGEQEPAPQDDEMKEEAAGSGSAGEGDGKAAATEHSQRELDVTLED
 IKEHVRQLEKAVSGKEPRFVLRALRMLPSTSRRLNHYLYKAVHGFFTSNNATRDFLLPFLEPMDEAD
 LQFRPRTGKAASAPLLPEVEAYLQLLMVIFLMNSKRYKEAQKISDDLQKISTQNRALDLVAAKCYHH
 ARVYEFLDKLDVRSFHLHARLRATLRHDADGQATLLNLLLRLNYLHYSLYDQAEKLVSKSVFPEQANNNE
 WARYLYYTGRIKAIQLEYSEARRTMNLRKAPQHTAVGFKQTVHKLLIVVELLLGEIPDRLQFRQPSLK
 RSLMPYFLLTQAVRTGNLAKFNQVLDQFGEKFQTDGTYTLIIRLRHNVIKTGVRMISLSYSRISLADIAQ
 KLQLDSPEDAEIFVAKAIRDGVIEASINHEKGYVQSKEMIDIYSTREPQLAFHQRI SFCLDIHNMVSKAM
 RFPPKSYNKDLESAEERREREQQDLEFAKEMAEDDDDFP

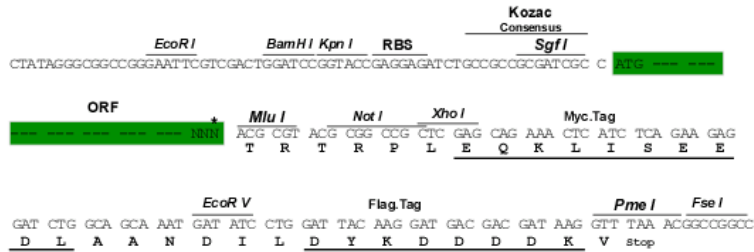
TRTRPLEQKLISEEDLAANDILDYKDDDDKV

Restriction Sites:

Sgfl-MluI

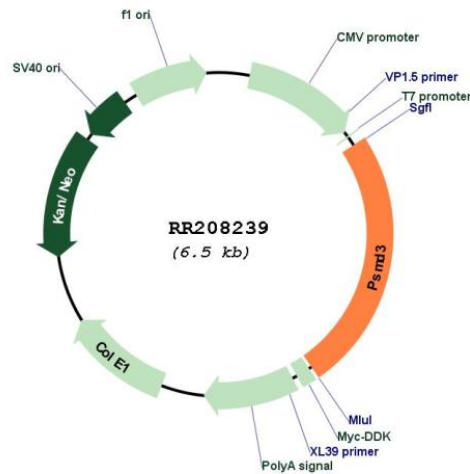
Cloning Scheme:

Cloning sites used for ORF Shutting:



* The last codon before the Stop codon of the ORF

Plasmid Map:



ACCN:	NM_001008281
ORF Size:	1590 bp
OTI Disclaimer:	The molecular sequence of this clone aligns with the gene accession number as a point of reference only. However, individual transcript sequences of the same gene can differ through naturally occurring variations (e.g. polymorphisms), each with its own valid existence. This clone is substantially in agreement with the reference, but a complete review of all prevailing variants is recommended prior to use. More info
OTI Annotation:	This clone was engineered to express the complete ORF with an expression tag. Expression varies depending on the nature of the gene.
Components:	The ORF clone is ion-exchange column purified and shipped in a 2D barcoded Matrix tube containing 10ug of transfection-ready, dried plasmid DNA (reconstitute with 100 ul of water).
Reconstitution Method:	<ol style="list-style-type: none">1. Centrifuge at 5,000xg for 5min.2. Carefully open the tube and add 100ul of sterile water to dissolve the DNA.3. Close the tube and incubate for 10 minutes at room temperature.4. Briefly vortex the tube and then do a quick spin (less than 5000xg) to concentrate the liquid at the bottom.5. Store the suspended plasmid at -20°C. The DNA is stable for at least one year from date of shipping when stored at -20°C.
RefSeq:	NM_001008281.1 , NP_001008282.1
RefSeq Size:	2147 bp
RefSeq ORF:	1593 bp
Locus ID:	287670
Cytogenetics:	10q31
MW:	60.7 kDa