

Product datasheet for **RR208232**

Mmp27 (NM_001106799) Rat Tagged ORF Clone

Product data:

| | |
|---------------------------|---|
| Product Type: | Expression Plasmids |
| Product Name: | Mmp27 (NM_001106799) Rat Tagged ORF Clone |
| Tag: | Myc-DDK |
| Symbol: | Mmp27 |
| Mammalian Cell Selection: | Neomycin |
| Vector: | pCMV6-Entry (PS100001) |
| E. coli Selection: | Kanamycin (25 ug/mL) |



[View online »](#)

ORF Nucleotide Sequence:

>RR208232 representing NM_001106799
 Red=Cloning site Blue=ORF Green=Tags(s)

TTTTGTAATACGACTCACTATAGGGCGGCCGGGAATTCGTGACTGGATCCGGTACCGAGGAGATCTGCC
 GCC**GCGATCGCC**

ATGAAGTGCCTTCTGCCTCTGATGGTTAATTTTATAACACTTTCCTCTGCATTTCTCCAGACAGAAAGG
 AAAAAATGAGGAGAACAATCAACTGGCCAGGCATATCTCAACCAGTTCTACTCGTTGAAATAGAAGG
 GAGTCATCTTGTCCAAAGCAAGAACAGGAGTCTCTTAGATGGAACCTCAGGAAATGCAGGCCTTTTTT
 GGATTGACAGTGACGGGAAAGCTGGATTGACACTCTGGAGATCATGAAGGTGCCAGGTGTGGGGTGC
 CGGACGTGGGCAATATGGTTACACCCTCCCTGGGTGGAGAAAATACAACCTTACATACAGGATAATGAA
 TTACACTCCTGATATGACACACGCTGATGTGGATGAGGCTATTCAGAAAGCTCTACAAGTTTGGAGCAAG
 GTCACTCCACTGATGTTACCAGGATATCCAAGGGGTTGCAGATATAATGATAGCATTGAGACAAGAG
 TCCATGGCTGGTGTCTCGTCACTTTGATGGTCTCTGGGAGTCTTGGCCATGCCTTCTCCTGGTCT
 GGGTCTTGGTGGTATACCCACTTGGACGAAGATGAAACATGGACAACCGGGGATGGGGAAGGGTTCAAC
 TTGTTTCTCGTGGCTGCTCATGAATTTGGTCACTCTCTGGGGCTCTCCACTCCAGTGATCAAACAGCCT
 TGATGTTTCTAATTATGTCTCCCTGGATCCTAACAAATACCCACTTCTCAGGATGATTAATGGGAT
 CCAGTCCATCTATGGAAGTCCGCTAAGGTACCCACCAAGCCAAATGAAACCCTGTCCCCTGCGCTTGT
 GAGCCCAACTTGACTTTTGTGCTGCTACTACCTCCGACGGGAAATCATGTTCCTTAAAGGCAGGCACC
 TATGGAGGGTCTACTCTGATATTACTGGTGTGAGTTTGGAGTTTATTGATTCCTTCTGGCCATCTTGCC
 AGCTGATCTTCAAGCTGCCTATGAAAGCCCCAGAGATGAGGTCTTGTGTTTTAAAGATGAGAATTTCTGG
 GTGATCAGGGGGAATCTGTCTTGCTGGTTACCCAAATCTATCCACACACTCGGGTTTCCAAGACGTG
 TGAAGAAAATTTGATGCAGCCGTCTGTGATCATGACACAAAAGAAAACCTTTTTTTTGGTGCATCTGGTG
 CTGGAGGTATGATGAGATGGCGCAAGCAATGGACAGAGGATTCCACAGAGGATAATGAAGCGCTTCCCA
 GGAATTCGCTCCGTGTAGATGCTGCTTCCAACGTAACGGATTCTTCTATTTCTCCGTGGGTGAGGC
 AATTTGAGTACGACATGAAGGCAAAAAATATACCCCAAGTATGAAAACCAACACTTGGTTCCTGTGCAA
 TGAACCATTAACCTCATCATCAATGTCAGTGTGAAAGGAAAAGCACATTCAATTGGCACAGTGATATTC
 CATCATAAAAGTGAAGCTTGCTCAGTTTCAGCATTGTTTCATGTGCTGACAAAAGCATATAGT

ACGCGTACGCGGCCGCTCGAGCAGAAACTCATCTCAGAAGAGGATCTGGCAGCAAATGATATCCTGGATT
 ACAAGGATGACGACGATAAGGTTTAA

Protein Sequence:

>RR208232 representing NM_001106799
 Red=Cloning site Green=Tags(s)

MKLLPLMVNFITLSSAFLPDRKDKNEENNQLAQAYLNQFYSLIEGSHLVQSKNRSLLDGKLQEMQAFF
 GLTVTGLKLDSDTLEIMKVPKGVDPVQYGYTLPGWRKYNLYRIMNYTPDMTHADVDEAIQKALQVWSK
 VTPLMFTRISKGVADIMIAFRTRVHGWCPRHFDGPLGVLGHAFPPGLGLGGDTHFDEDETWTGDEGFN
 LFLVAAHEFGHSLGLSHSSDQALMFPNYVSLDPNKYPLSQDDINGIQSIYGSPSKVPTKPNGNPVPCAC
 EPNLTFDAVTTFRREIMFLKGRHLWRVYSDITGAEFEFIDSFWPSLPADLQAAYESPRDEVLVFKDENFW
 VIRGNSVLPGYPKSIHTLGFPRRVKIDAAVCDHDTKKTFFFVGIWCWRYDEMAQAMDRGFPQRIKRF
 GIRLRVDAVFQRNGFFYFFRGRSQFEYDMKAKNITQVMKTNWFLCNEPLNSSSNVSVVEGKAHSIGTVIF
 HHKSASLLSFSIVHVLTKAYS

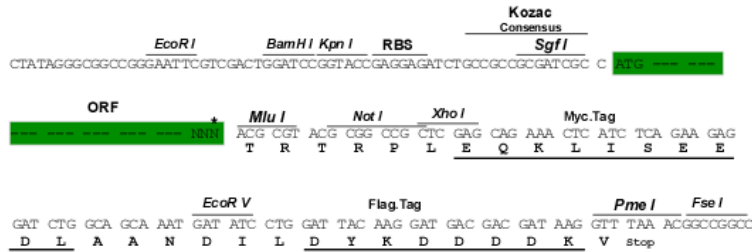
TRTRPLEQKLISEEDLAANDILDYKDDDDKV

Restriction Sites:

Sgfl-MluI

Cloning Scheme:

Cloning sites used for ORF Shutting:


ACCN: NM_001106799

ORF Size: 1533 bp

OTI Disclaimer: The molecular sequence of this clone aligns with the gene accession number as a point of reference only. However, individual transcript sequences of the same gene can differ through naturally occurring variations (e.g. polymorphisms), each with its own valid existence. This clone is substantially in agreement with the reference, but a complete review of all prevailing variants is recommended prior to use. [More info](#)

OTI Annotation: This clone was engineered to express the complete ORF with an expression tag. Expression varies depending on the nature of the gene.

Components: The ORF clone is ion-exchange column purified and shipped in a 2D barcoded Matrix tube containing 10ug of transfection-ready, dried plasmid DNA (reconstitute with 100 ul of water).

Reconstitution Method:

1. Centrifuge at 5,000xg for 5min.
2. Carefully open the tube and add 100ul of sterile water to dissolve the DNA.
3. Close the tube and incubate for 10 minutes at room temperature.
4. Briefly vortex the tube and then do a quick spin (less than 5000xg) to concentrate the liquid at the bottom.
5. Store the suspended plasmid at -20°C. The DNA is stable for at least one year from date of shipping when stored at -20°C.

RefSeq: NM_001106799.1, NP_001100269.1
RefSeq Size: 1597 bp

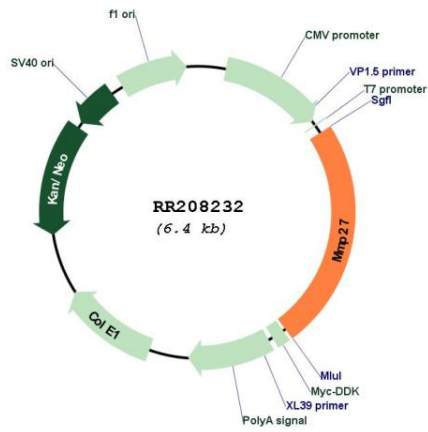
RefSeq ORF: 1536 bp

Locus ID: 300340

Cytogenetics: 8q11

MW: 58.1 kDa

Product images:



Circular map for RR208232