

Product datasheet for **RR208229**

NdrG1 (NM_001011991) Rat Tagged ORF Clone

Product data:

Product Type:	Expression Plasmids
Product Name:	NdrG1 (NM_001011991) Rat Tagged ORF Clone
Tag:	Myc-DDK
Symbol:	NdrG1
Synonyms:	Ndr1
Mammalian Cell Selection:	Neomycin
Vector:	pCMV6-Entry (PS100001)
E. coli Selection:	Kanamycin (25 ug/mL)
ORF Nucleotide Sequence:	>RR208229 representing NM_001011991 Red=Cloning site Blue=ORF Green=Tags(s)

TTTTGTAATACGACTCACTATAGGGCGGCCGGAATTCGTCGACTGGATCCGGTACCGAGGAGATCTGCC
GCC**CGGATCGCC**

ATGTCGCCGAGAGCTACATGACGTGGACCTCGCCGAGGTGAAGCCTCTGGTGGAAAAGGGGAGAGCATCA
CTGGTCTCCTGCAAGAGTTCGATGTTCCAGGAGCAGGACATTGAGACCCTACATGGCTCCCTGCATGTCAC
TCTGTGTGGAACCCCAAGGGCAACCGTCTGTCATCCTCACGTATCACGACATCGGCATGAACCACAAG
ACCTGCTACAACCCTCTTTCAACTCTGAGGATATGCAAGAGATCACACAACATTTGCGGTCTGCCATG
TGGATGCCCTGGCCAACAGGATGGTGGCCCTTCCCTCCAGTGGGTACATGTATCCCTCAATGGATCA
GTTGGCTGAAATGCTTCCCTGGAGTCCTTACAAGTTTGGGCTTAAGAGTGTATTGGCATGGGGACAGGA
GCTGGCGCTACATCCTGACCCGCTTTCGACTCAACAACCCTGAGATGGTGGAGGCTTGTGCTCATGA
ATGTGAATCCCTGTGCTGAAGGCTGGATGGACTGGGCTGCCTCCAAGATCTCAGGATGGACCAAGCCCT
GCCAGACATGGTGGTGTCCCACCTTTCGGAAGGAGGAGATACACAGCAATGTGGAGGTGGTGCACACG
TACCGCCAGCACATCCTCAACGACATGAACCCGAGCAACCTGCACCTGTTTCATCAGCGCTACAACAGCC
GGAGAGACCTGGAGATTGAGCGGCAATGCCTGGAACCCACACTGTCACCCTGCAGTGCCTGCTCTGCT
CGTGGTTGGAGACAACCTCTCTGCCGTGGATGCTGTGGTGAATGCAATCCAAATTGGACCAACGAAG
ACCACCCTACTCAAGATGGCAGACTGTGGAGCCCTTCTCAGATCTCTCAGCCTGCCAAGCTTGCAGAGG
CCTTCAAGTACTTTGTGAGGGCATGGGATACATGCCTTCTGCCAGCATGACTCGCCTGATGCGGTCCCG
CACAGCCTCTGGCTCCAGTGTACATCCCTGGAGGGCACCCGTAGCCGCTCCCATACCAGCGAGGGGCC
CGAAGTCGCTCACACACAAGTGAGGGTCCCGTAGCCGCTCCCATACCAGTGAGGATGCCGCTGTAACA
TCACCCAGCTCGGGTCCACAGGGAACAATGCCGGGCCAAGTCCATGGAGGTGCTCTGC

ACGCGTACGCGGCCGCTCGAGCAGAACTCATCTCAGAAGAGGATCTGGCAGCAATGATATCTGGATT
ACAAGGATGACGACGATAAGGTTTAA



[View online »](#)

Protein Sequence: >RR208229 representing NM_001011991
Red=Cloning site Green=Tags(s)

MSRELHVDLAEVKPLVEKGESITGLLQEFDVQEQDIETLHGSLHVTLCGTPKGNRPVILTYHDIGMNHK
 TCYNPLFNSEDMQEITQHFVAVCHVDAPGQDGFSPFVGYMYPMSMDQLAEMLPGLVHKFGLKSVIGMGTG
 AGAYILTRFALNNPEMVEGLVLMNVNPCAEGWMDWAASKISGWTQALPDMVVSHLFGKEEIHNSNEVVHT
 YRQHILNDMNPSNLHLFISAYNSRRDLEIERPMPGTHTVTLQCPALLVVDNSPAVDVAVVECNKLDPTK
 TLLKMDCGGLPQISQPAKLAFAFKYFVQGMGYMPSASMTRLMRSRTASGSSVTSLEGTRRSRSHSEGP
 RSRSHSEGRSRSHSEDLARLNIPTSSGATGNNAGPKSMEVSC

TRTRPLEQKLISEEDLAANDILDYKDDDDKV

Chromatograms: https://cdn.origene.com/chromatograms/ja1851_f11.zip

Restriction Sites: SgfI-MluI

Cloning Scheme:



ACCN: NM_001011991

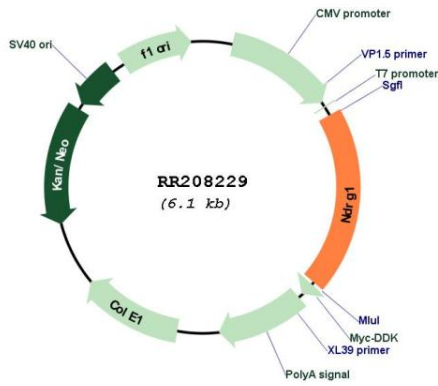
ORF Size: 1182 bp

OTI Disclaimer: Due to the inherent nature of this plasmid, standard methods to replicate additional amounts of DNA in E. coli are highly likely to result in mutations and/or rearrangements. Therefore, OriGene does not guarantee the capability to replicate this plasmid DNA. Additional amounts of DNA can be purchased from OriGene with batch-specific, full-sequence verification at a reduced cost. Please contact our customer care team at custsupport@origene.com or by calling 301.340.3188 option 3 for pricing and delivery.

The molecular sequence of this clone aligns with the gene accession number as a point of reference only. However, individual transcript sequences of the same gene can differ through naturally occurring variations (e.g. polymorphisms), each with its own valid existence. This clone is substantially in agreement with the reference, but a complete review of all prevailing variants is recommended prior to use. [More info](#)

OTI Annotation:	This clone was engineered to express the complete ORF with an expression tag. Expression varies depending on the nature of the gene.
Components:	The ORF clone is ion-exchange column purified and shipped in a 2D barcoded Matrix tube containing 10ug of transfection-ready, dried plasmid DNA (reconstitute with 100 ul of water).
Reconstitution Method:	<ol style="list-style-type: none">1. Centrifuge at 5,000xg for 5min.2. Carefully open the tube and add 100ul of sterile water to dissolve the DNA.3. Close the tube and incubate for 10 minutes at room temperature.4. Briefly vortex the tube and then do a quick spin (less than 5000xg) to concentrate the liquid at the bottom.5. Store the suspended plasmid at -20°C. The DNA is stable for at least one year from date of shipping when stored at -20°C.
RefSeq:	<u>NM_001011991.1</u> , <u>NP_001011991.1</u>
RefSeq Size:	2906 bp
RefSeq ORF:	1185 bp
Locus ID:	299923
UniProt ID:	<u>Q6JE36</u>
Cytogenetics:	7q34
MW:	43.4 kDa
Gene Summary:	Stress-responsive protein involved in hormone responses, cell growth, and differentiation. Acts as a tumor suppressor in many cell types. Necessary but not sufficient for p53/TP53-mediated caspase activation and apoptosis. Has a role in cell trafficking notably of the Schwann cell and is necessary for the maintenance and development of the peripheral nerve myelin sheath. Required for vesicular recycling of CDH1 and TF. May also function in lipid trafficking. Protects cells from spindle disruption damage. Functions in p53/TP53-dependent mitotic spindle checkpoint. Regulates microtubule dynamics and maintains euploidy (By similarity).[UniProtKB/Swiss-Prot Function]

Product images:



Circular map for RR208229