

Product datasheet for **RR208228**

Map3k1 (NM_053887) Rat Tagged ORF Clone

Product data:

Product Type: Expression Plasmids
Product Name: Map3k1 (NM_053887) Rat Tagged ORF Clone
Tag: Myc-DDK
Symbol: Map3k1
Synonyms: Mekk1
Vector: pCMV6-Entry (PS100001)
E. coli Selection: Kanamycin (25 ug/mL)
Cell Selection: Neomycin
ORF Nucleotide Sequence: >RR208228 representing NM_053887
 Red=Cloning site Blue=ORF Green=Tags(s)

GCCGGGAATTCGTCGACTGGATCCGGTACCGAGGAGATCTGCCGCCGCGATCGCCGGCGCCAGATCTC
 AAGCTTAAGTACTAGCTAGCGGACCGAC

ATGGCGGCGGGCGGGCGATCGCGCCTCGTCGTCGGATTCCCAGGCGCGCGGGCGGAGCCCCGAGG
 CGGGCGGGCGGGCGGAGCTCTCAGGGAAGCGGCGCCCGCAGCGGGCGGGGCTGTCGGGAGAG
 TGGCAGCGCGGGCGCGAGCGCGGACTGGCGGCGGCGAGCAGTGCACAAAGTAAGGAGTGTGGAGCTG
 GACCAGCTGCCGAGCAGCCGCTCTTCCCTACCGCCTCGCCGCCCTGCCATCTACTTCCCCTCGCCGG
 AGCCCGCGGACGCGGCTGCAGGAGCGAGTGGCTTCCAGCCTGCGGCGGGACCGCCACCCCGGGAGCAGC
 GAGTCGCTGCGGCTCCCCTCTGCCGAGCTGGCGGCGCGGGACAGCGGCGCCCGGAGCCCCGCGGGG
 GCCGAGCCGCCCTCTGCAGCGGCCCTCCGGTCGAGAGATGGAGAATAAAGAAACCCCTCAAAGGATTGC
 ACAAGATGGATGACCGCCAGAGGAGCGAATGATCAGGGAGAAGCTCAAGGCGACCTGTATGCCTGCCTG
 GAAGCACGAGTGGTTAGAAAGGAGGAACAGGAGAGGCCCTGTGGTGGTGAACCAATCCCTATTAAGGA
 GATGGATCTGAAATGAGTAACTTGGCAGCTGAGCTCAAGGAGAGGGCCAGCAGGCTCTGCTGCACCAG
 CTCCCAAGGGCCGACGAAGCCCGTCTCCTGGAAGCTCCCATCAGGGCGCTCAGGGAAGCCGGAATCCCC
 AGGAGTGAGACGAAACGAGTGTCCCGAGTGCCTTCCAGAGTGGCAGAATCACACCACCTCGAAGAGCC
 CCGTCGCCAGATGGCTTCTCACCGTACAGCCAGAGGAGACGAGCCCGCTGTGAACAAAGTGTAGGG
 CCAGGCTGTACCTCCTGCAGCAGATAGGACCCAACTCTTCTGATTGGAGGAGACAGTCCAGACAATAA
 ATACCGCGTGTATTATGGGCCACAGAAGTGCAGCTGTGGGCGTGGGACATTCTGCATTACCTCTTGT
 GTCATGCTCCGGTGTTCAGCTAGAACCCTCCGACCCCATGCTATGGAGAAAACTTTAAAAAATTTT
 AGGTTGAGAGTTTGTCCAGAAATACCACAGTAGGCGTAGCTCAAGAATCAAAGCTCCATCTCGGAACAC
 CATCCAGAAGTTTGTCTACGCATGTCAAAGTGCACACATTGTCATCGTCTAGCACATCCACATCTAGT
 TCAGAAAACAGCATCAAGGATGAAGAGGAGCAGATGTGTCCCATCTGCTTGTGGCATGCTGGATGAGG
 AGAGCCTGACTGTGTGAAGACGGCTGCAGGAACAAGCTGCACCACCACTGCATGTCAATCTGGGCAGA
 AGAATGTAGAAGAAATAGAGAACCGTAAATATGTCCCCTTTGTAGATCTAAGTGGAGATCCCATGACTTC
 TACAGCCATGAGTTATCAAGCCCTGTGGATTCCCCTACCTCCCTGCGAGGTGTACAGCAGCCCTCCTCC



[View online >](#)

CGCAACAGCCTGTGGCCGGATCACAGCGGAGGAATCAGGAAAGCAATTTAACCTTACTCATTATGGAAC
CCAGCAGATTCTCCCGTTACAAAAGTTAGCCGAGCCATGGATTAGGCATTCCGGAATGGAGCTCGTT
GGCTGCTTATTCTCTAGAAACTGGAACGTAAGGGAGATGGCCCTTAGGCGCCTTTCCACGATGTTAGCG
GGGCCCTGTTGTTGGCGAACGGGGAGAGCACTGGAACCTTGGAGGCGGCAGCGGAGGCAGCCTAAGTGC
TGGCGCCGCCAGTGGGTCTTCCAGCCCAGCATCTCAGGGGACGTGGTGGAGGCGTTCTGCAGCGTCCTG
TCTATCGTGTGCGCTGACCCTGTCTACAAAGTGTACGTTGCTGCTTTAAAAACACTGAGAGCCATGCTGG
TATACACTCCTTGGCCACAGCCTGGCAGAAAAGAATCAAACCTCAGAGACTTCTCCGGCCAGTGGTAGACAC
CATCCTAGTGAAGTGCGCAGACGCCAATAGCCGCACGAGTCAGCTGTCCATATCAACACTGTTGGAGCTC
TGCAAGGGCCAAGCGGGGAGTTGGCAGTTGGACGAGAAAATACTTAAAGCTGGATCCATCGGTGTTGGTG
GCGTTGATTACGCTCTAAGTTGTATTCTTGGAAACCAAGCTGAATCAAACAACCTGGCAAGAACTCCTGGG
TCGCTCTGTCTTATAGACAGATTGCTCTTGGAAATTTCTGCGGAATTTTATCCTCATATTGTCAGTACC
GATGTCTCACAAGCCGAGCCTGTTGAAATCAGGTATAAGAAGCTGCTGTCCCTCTTAGCCTTTGCCTTGC
AATCCATTGACAATCCCACTCTATGGTCGGCAAACCTCTCGCGGAGGATTTATCTGAGCTCAGCAGCAAT
GGTGACCACAGTGCCTCCCTGTTTTCCAAGCTGGTAACCATGCTAAGTCTTCTGGATCCTCCCACTTC
GCCAGGATGCGCCGGCGTCTGATGGCCATTGCAGACGAGGTAGAAATGCCGAGGTCATCCAGCTGGGT
CGGAAGACACTTTGGATGGCCAGCAGGACAGCTCGCAGGCAATGGCCCTCCCGCTATCCAGAGAGCAG
CTCCCTTGAGCACACAGCCCATGTAGAGAAAACGGAAAAGGATTAAGCTACGAGACTGAGTGCCAGC
TCAGAGGACATTTCTGACAGACTGGCTGGCGTTTCTGTAGGACTTCTAGTTTCCAGCAACAACAGAAAC
CAAAGCCAACAGTTCAAACAAGGAGCAGACCCACAGTCAGTGTGAACTCCTCTCCTTTGTCTCCTCC
TCAGTTAATGTTCCAGCAATATCAGCCCCATGTTTATCTGCCCCGTCTGTCCCAGCTGGCTCTGTAACA
GATGCTTCAAGCATAGACCTCGGGCGTTTGTCCCTGTAAAATACCCTCTGCGTCTCCCCAACACAGC
GCAAGTTTTCCCTACAGTTCAGAGGACCTGCTCTGAGAACCCGAGACTCAGAAAAACTCTCCCACTCTT
TACTCAGTCGAGACCCCCACCCTCCAGTAACATACACAGGGCAAAGGCATCCCCAGCCCTCCGGGTAGC
ACAAGCAAACCTAGGGGATGCCTCAAAAAACAGCATGACACTCGACTGAACAGTGTCTCCAGTGTGATG
ACAGCTTTGGCAGTGGCAGCAACAGTGGCAGCGCGTCTATCCAGTGAGGAGACGGCATTACCCACAGC
AGAGGACAAGTGCAGGTTAGATGTCAACCCGAGCTCACTCCAGTATCGAGGACCTTCTGAAAGCATCT
ATGCCCTCAAGTGACACAACAGTCACTTCAAGTCCGAAGTCGCCGTCTCTCTCCTGAGAAGGCCGAAA
GTGATGACACCTACAAGATGACGTCAATCACAATCAAAGTGCAAAGAGAAGATGGAGGCTGAGGAAGA
GGAGGCGCTCGGATTGCCATGGCAATGTCGGCTTCTCAGGACGCCCTCCCATAGTCCCTCAGCTGCAG
GTGGAAAATGGAGAGGATATCATCATCATCCAGCAGGATACACCAGAAACCCTACCAGGGCATAACAAAG
CGAACGAGCCCTACAGAGAAGACACCGAGTGGCTGAAAGGGCAGCAGATAGGCCTCGGAGCATTTCTTC
TTGTTACCAAGCACAGGATGTGGCACTGGAACTTAATGGCTGTGAAACAGGTGACCTACGTGAGAAAC
ACATCTTCTGAGCAGGAGGAAGTGGTGGAAACCTTGGAGGAAGAGATCAGGATGATGAGCCACCTCAACC
ATCCGAACATCATCAGGATGCTGGGGGCCAGTGCAGAGAAGGCAACTACAACCTCTTATCGAGTGGAT
GGCGGGAGCCTCCGTGGCTCACCTCTTGTAGTAAATATGGAGCTTCAAGGAGTCAGTGGTCATTAACATC
ACAGAGCAGTTACTCCGTGGCCTTCTCTATCTCCACGAGAACCAGATCATTACAGAGACGTCAAAGGGG
CCAATCTGCTCATTGACAGCACCAGTGCAGGCTGAGAATTGCAGACTTCGGTGTGCCCCAGGTTGGC
ATCCAAAGGAACCTGGTGCAGGAGAGTTCAGGGACAGTACTGGGACAATTGCATTATGGCGCCTGAG
GTACTAAGAGGTCAGCAGTACGGTAGGAGCTGTGACGCTGGAGTGTGGCTGCGCCATTATAGAAATGG
CCTGTGCAAAACCACCCTGGAACGCAGAAAAGCACTCCAATCATCTTGCTTTGATATTTAAGATTGCGAG
TGCAACTACTGCACCATCCATCCCGTCACACCTGTCCCGGGCCTGCGAGACGTGGCTCTGCGCTGTTTA
GAACCTCAACCTCAGGACAGACCTCCGTCAAGAGAGCTACTGAAGCATCCTGTCTTCCGTACAACATGG

ACGCGTACGCGGCCGCTCGAGCAGAACTCATCTCAGAAGAGGATCTGGCAGCAATGATATCCTGGATT
ACAAGGATGACGACGATAAGGTTTAA

Protein Sequence: >RR208228 representing NM_053887
 Red=Cloning site Green=Tags(s)

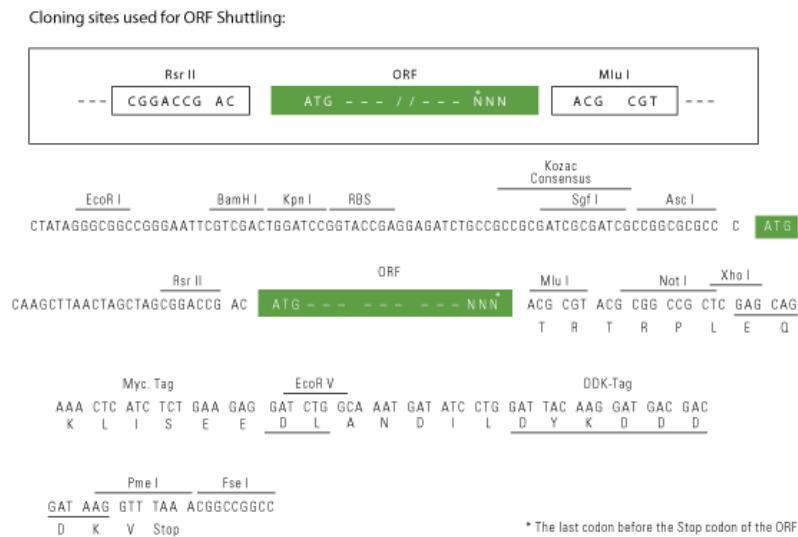
MAAAAGDRASSSGFPGAAAASPEAGGGGGALQSGGAPAAGAGLLRETGSAGRERADWRRQQLRKVRSVEL
 DQLPEQPLFLTASPPCPSTSPSEPADAAAAGASGFQPAAGPPPPGAASRCGSHSAELAAARDSGARSPAG
 AEPPSAAAPSGREMENKETLKGHLKMDRPEERMIREKLKATCMPAWKHEWLERNRGPPVVVKPIPIKIG
 DGSEMSNLAELQGEQAGSAAPAPKGRRSPSPGSSPSGRSGKPESPGVRKRKRVSPVPFQSGRITPPRRA
 PSPDGFSPYSPEETSRRVKNVMRRLYLQIQIPNSFLIGGDSNDKYRVFIGPQNCSCGRGTFCIHLLF
 VMLRVFQLEPSDPLWRKTLKNFEVESLFQKYHSRRSSRIKAPSRNTIQKFVSRMSNCHTLSSSSTSTSS
 SENSIKDEEEQMCPICLLGMLDEESLTVCEGCRNKLHHHCMSIWAEECRNREPLICPLCRSKWRSHDF
 YSHELSSPVDSPSLRGVQPPSPQPVAGSQRNQNESNENLTHYGTQQIPPAYKDLAEPWIQAFGMELV
 GCLFSRNWNVREMARRLSHDVSALLANGESTGTSGGGSGGSLSAGAASGSSQPSISGDVVEAFCSVL
 SIVCADPVYKVVYAALKTLRAMLVYTPCHSLAERIKLQRLLRPVVDITLVKCADANSRTSQLSISTLLEL
 CKGQAGELAVGREILKAGSIGVGGVDYVLSLILGNQAESNNWQELLGRLCLIDRLLLEISAEFYPHIVST
 DVSQAEPVEIRYKLLSLLAFALQSIDNSHSMVGKLSRRIYLSARMVTTVPPLFSKLVTMLSAGSSHF
 ARMRRRLMAIADEVEIAEVIQLGSEDTLDGQDSSQALAPPRYPESSSLEHTAHVEKTGKGLKATRLSAS
 SEDIISDRLAGVSVGLPSSATTEQPKPTVQTKGRPHSQCLNSSLSPQLMFPAISAPCSSAPSVPAGSVT
 DASKHRPRAFVPCKIPASASPQTQRKFSLQFQRTCSENRDESEKLSPVFTQSRPPSSNIHRAKASRPVGS
 TSKLGDASKNSMTLDLNASQCCDSFGSGSNSGSAVIPSEETAFTPAEDKCRDLVNPENSSIEDLLEAS
 MPSSDTTVTFKSEAVLSPEKAESDDTYKDDVNHQKCKEKEAEEEEALAIAMAMASQDALPIVPQLQ
 VENGEDI I I I Q Q D T P E T L P G H T K A N E P Y R E D T E W L K G Q Q I G L G A F S S C Y Q A Q D V G T G T L M A V K Q V T Y V R N
 T S S E Q E E V V E A L R E E I R M M S H L N H P N I I R M L G A T C E K S N Y N L F I E W M A G A S V A H L L S K Y G A F K E S V V I N Y
 T E Q L L R G L S Y L H E N Q I I H R D V K G A N L L I D S T G Q R L R I A D F G A A A R L A S K G T G A G E F Q G Q L L G T I A F M A P E
 V L R G Q Q Y G R S C D V W S V G C A I I E M A C A K P P W N A E K H S N H L A L I F K I A S A T T A P S I P S H L S P G L R D V A L R C L
 E L Q P Q D R P P S R E L L K H P V F R T T W

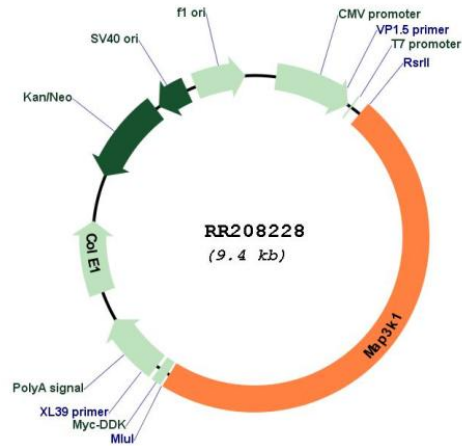
TRTRPLEQKLISEEDLAANDILDYKDDDDKV

Restriction Sites:

RsrII-MluI

Cloning Scheme:



Plasmid Map:


ACCN: NM_053887

ORF Size: 4479 bp

OTI Disclaimer: The molecular sequence of this clone aligns with the gene accession number as a point of reference only. However, individual transcript sequences of the same gene can differ through naturally occurring variations (e.g. polymorphisms), each with its own valid existence. This clone is substantially in agreement with the reference, but a complete review of all prevailing variants is recommended prior to use. [More info](#)

OTI Annotation: This clone was engineered to express the complete ORF with an expression tag. Expression varies depending on the nature of the gene.

Components: The ORF clone is ion-exchange column purified and shipped in a 2D barcoded Matrix tube containing 10ug of transfection-ready, dried plasmid DNA (reconstitute with 100 ul of water).

Reconstitution Method:

1. Centrifuge at 5,000xg for 5min.
2. Carefully open the tube and add 100ul of sterile water to dissolve the DNA.
3. Close the tube and incubate for 10 minutes at room temperature.
4. Briefly vortex the tube and then do a quick spin (less than 5000xg) to concentrate the liquid at the bottom.
5. Store the suspended plasmid at -20°C. The DNA is stable for at least one year from date of shipping when stored at -20°C.

RefSeq: [NM_053887.1](#), [NP_446339.1](#)

RefSeq Size: 5180 bp

RefSeq ORF: 4482 bp

Locus ID: 116667

UniProt ID: [Q62925](#)

Cytogenetics: 2q14

MW: 161.3 kDa

Gene Summary: kinase that has E3 ubiquitin ligase to mediate ubiquitination and degradation of ERK1/2 [RGD, Feb 2006]