

## Product datasheet for **RR208194**

### **Bbs7 (NM\_001012180) Rat Tagged ORF Clone**

#### **Product data:**

Product Type:	Expression Plasmids
Product Name:	Bbs7 (NM_001012180) Rat Tagged ORF Clone
Tag:	Myc-DDK
Symbol:	Bbs7
Mammalian Cell Selection:	Neomycin
Vector:	pCMV6-Entry (PS100001)
E. coli Selection:	Kanamycin (25 ug/mL)



[View online »](#)

**ORF Nucleotide Sequence:**

>RR208194 representing NM\_001012180  
 Red=Cloning site Blue=ORF Green=Tags(s)

TTTTGTAATACGACTCACTATAGGGCGGCCGGAATTCGTCGACTGGATCCGGTACCGAGGAGATCTGCC  
 GCC**CGCATCGCC**

ATGGATCTGACGTTAAGCCGAGCAGACTATCTCCAGGTAGGAGTGACCTCTCAGAAGACTATGAAGTTGC  
 TTCCTACCTCAAGACAAAGAGCTACACAAAAGGTGGTCATTGGAGATCAAGATGGGGTGGTGATGTGCTT  
 CGGCATGAAGAAAAGCGAGGCGGTGTCACTGTTCAAGACTTTACCAGGGCAGAAGGTTTCCAGGCTGGAA  
 CTAGGAGGGGCTCTGAATACGCCTCAGGAGAAAATCTTCATTGCTGCAGGGTCCGAGATTAGAGGCTTTA  
 CAAAGAGAGGGAAACAGTTTCTCTTTTGAACAAAACCTCACAGAAAGCATTAAAGCTATGTATATATC  
 TGGCTCCGACCTTCTCAGTGCCAGCTACATCTATAATCACTACTGTGACTGCAAAGACAAAACCTAT  
 TACCTTTCTGGGACAAAATCAATGATGTCATCTGCCTTCTGTGGAAAGGTTATCCCGTGTGACACCGG  
 TGTTGGCCTGCCAGGACAGGTTCTCCGAGTCTACAGGGATCTGATGTGACGTATGAAATCGAGGTTCC  
 TGGTCCACCCACTGTCTTAGCGTGCATAATGGAGACGGAGTGACTCTGGGGAAGTCTTCTGTTCCGGC  
 ACATCAGATGGAAGGCTTGGGCTTATTCAGATCACAGCATCCAAACCAATACACAATGGGAAATTCGAA  
 ATGACAAAAGCGGGGAGGTATCTTGTGCTTGACAGCTTTGATATCATGGGTGATGGGGTTAAAGATT  
 ACTTGTGGGAGAGATGATGGAATGGTGGAAAGTATAGTTTTGAGAATGCAAAATGAACCCGTGCTACGA  
 TTTGATCAGATGCTGTCTGAAAGTGCACATCAGTCCAGGGTGGCTGTGTAGGAAAAGATGGTTATGACG  
 AAATCGTGTGGCCACGTATTCAGGCTGGGTGACAGGGCTGACTACAGAGCCCACTATAAGGAAAGTGG  
 GCCAGGAGAAGAACTGAACTCAATCAGGAAATGCAGAATAAGATTGCTTCTTAAAGGACTGAATTAGAA  
 CATCTGCAGTTGAAGGTGCTTCAGGAGAGAGAAAATTACCAACAGTCTTCACAGTCGAGCCAAGCAAAGT  
 CAACAGTCCCTTCATTCAGTATAAACGACAAGTTCACATTGAATAAAGATGATGCTACAGCCTTGT  
 GTTAGAGGTGCGGACTGCAATAGATAATGTCTTAATACAGAGTGATGTTCCAATAGACCTACTCGATGTG  
 GATAAGAATTCTGCTGTTGTGAGCTTTAGCAGCTGTGACACAGAGTCAAACGACAACCTCTTCTCGCCA  
 CTTATCGGTGCCAGGCAAACACCACCAGGCTGGAGCTCAAGATCCGTTCAATTGAAGGCCAGTATGGCAC  
 ACTCCAGGCATATGTGACTCCAAGAATCCAACCGAAAACCTGTCAGGTTCCGCCAGTACCACATCAAACCT  
 CTGTGCTCCATCAAAGAACTCACTTTATTGACCACGACAGGCCCATGAACACGCTGACTCTAACAGGCC  
 AGTTCAGTTCGCCGAGGTTCACTCCTGGGCCGTGCTCTGCCTGAAGTGCCGAAAAGCCTCCAGC  
 GGGGAATGTGCAACTTTCTACTTTCAGAATACCTTTCTGGACACACAGCTGGAGTGTGCATACAGAAA  
 GGAGAAGGAATCTTAAATCTGACAACATCTCTACAATATCCATCCTAAAAGATGTGCTTTCTAAGAAG  
 CTACAAAAGGAAAATTAATCTCAACATATCATACGAGATAAATGAAGTGTGAGTCAAGCATACTTTAAA  
 GCTAATTCACCCAAAGTTGGAGTACCAGTTGCTTCTGGCTAAGAAAAGTACAGTTAATTGATGCCTTGAAG  
 GAATTACAGGTTGATGAGGAAATACAAGCTTTCTGATTCCAGAGTATCGCTGTATCCTAGAAGAGGCTG  
 ATCATCTACAAGAGGAATACAAAAGCAGCCTGCCCATCTTGAAGAGACTCTATGGTATGATTACTGATCT  
 TTTATAGATAAATTTAAGTTCAAAGGCACTAATGTAAAAACCAAAGTACCTGTACTCTGGAGATTCTC  
 GACAGCTATGACCAGAACACACTGATTTCTTTCTTTGATGCAGCA

**ACGCGT**ACGCGGCCGCTCGAGCAGAACTCATCTCAGAAGAGGATCTGGCAGCAAATGATATCCTGGATT  
 ACAAGGATGACGACGATAAGGTTTAA

**Protein Sequence:** >RR208194 representing NM\_001012180  
Red=Cloning site Green=Tags(s)

```
MDLTLSRADYLQVGVTSSQKTMKLLPTSRQRATQKVVIGDQDGVVMCFGMKKGEAVSVFKTLPGQKVSRL
LGGALNTPQEKIFIAAGSEIRGFTRGKQFLSFETNLTESIKAMYISGSDLFLSASYIYNHYCDCKDQNY
YLSGDKINDVICLPVERLSRVTPVLACQDRVLRVLDQSDVYIEVPGPPTVLALHNGDGGDSGEGLLFG
TSDGRLGLIQITASKPIHKWEIRNDKKRGGILCLDSFDIMGDGVKDLLVGRDDGMVEVVSFENANEPVLR
FDQMLSESVTSVQGGCVGKDGYDEIVLATYSGWVTGLTTEPTHKESGPGEELKLNQEMQNKIASLRTELE
HLQLKVLQERENYQSSQSSQAKSTVPSFSINDKFTLNKDDASYSLVLEVRTAIDNVLIQSDVPIDLLDV
DKNSAVVSFSSCDTESNDNLLATYRCQANTTRLELKIRSIIEGQYGLQAYVTPRIQPKTCQVRQYHIKP
LSLHQRTHFIDHRPMNTLTLTGQFSFAEVHSAVLCLEVPPEKPPAGECATFYFQNTFLDTQLECA YRK
GEGIFKSDNISTISILKDVLSKEATKRKINLNISYEINEVSVKHTLKL IHPKLEYQLLAKKVQLIDALK
ELQVHEGNTSFLIPEYRCILEEADHLQEEYKQPAHLERLYGMITDLFIDKFKFGTNNVTKVPVLEIL
DSYDQNTLISFFDAA
```

TRTRPLEQKLISEEDLAANDILDYKDDDDKV

**Restriction Sites:**

SgfI-MluI

**Cloning Scheme:**

Cloning sites used for ORF Shuttling:



\* The last codon before the Stop codon of the ORF

**ACCN:** NM\_001012180

**ORF Size:** 2145 bp

**OTI Disclaimer:** The molecular sequence of this clone aligns with the gene accession number as a point of reference only. However, individual transcript sequences of the same gene can differ through naturally occurring variations (e.g. polymorphisms), each with its own valid existence. This clone is substantially in agreement with the reference, but a complete review of all prevailing variants is recommended prior to use. [More info](#)

**OTI Annotation:** This clone was engineered to express the complete ORF with an expression tag. Expression varies depending on the nature of the gene.

**Components:** The ORF clone is ion-exchange column purified and shipped in a 2D barcoded Matrix tube containing 10ug of transfection-ready, dried plasmid DNA (reconstitute with 100 ul of water).

**Reconstitution Method:**

1. Centrifuge at 5,000xg for 5min.
2. Carefully open the tube and add 100ul of sterile water to dissolve the DNA.
3. Close the tube and incubate for 10 minutes at room temperature.
4. Briefly vortex the tube and then do a quick spin (less than 5000xg) to concentrate the liquid at the bottom.
5. Store the suspended plasmid at -20°C. The DNA is stable for at least one year from date of shipping when stored at -20°C.

**RefSeq:** [NM\\_001012180.1](#), [NP\\_001012180.1](#)

**RefSeq Size:** 2719 bp

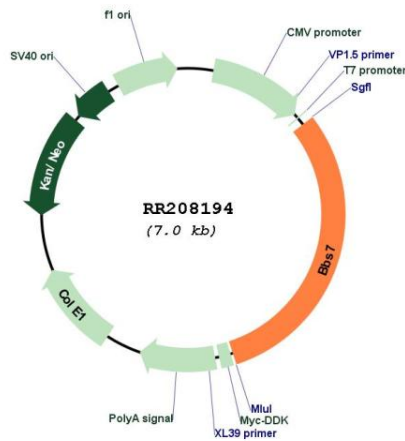
**RefSeq ORF:** 2148 bp

**Locus ID:** 361930

**Cytogenetics:** 2q25

**MW:** 80.2 kDa

**Product images:**



Circular map for RR208194