

## Product datasheet for **RR208154**

### Lpar3 (NM\_023969) Rat Tagged ORF Clone

#### Product data:

Product Type:	Expression Plasmids
Product Name:	Lpar3 (NM_023969) Rat Tagged ORF Clone
Tag:	Myc-DDK
Symbol:	Lpar3
Synonyms:	Edg7
Mammalian Cell Selection:	Neomycin
Vector:	pCMV6-Entry (PS100001)
E. coli Selection:	Kanamycin (25 ug/mL)
ORF Nucleotide Sequence:	>RR208154 representing NM_023969 Red=Cloning site Blue=ORF Green=Tags(s)

TTTTGTAATACGACTCACTATAGGGCGGCCGGAATTCGTCGACTGGATCCGGTACCGAGGAGATCTGCC  
GCC**CGATCGCC**

ATGGACTTTTTCTACAACAGGAGCAACACAGACACGGCGGACGAGTGGACGGGGACGAAGCTCGTGATCG  
TCCTGTGCGTTGGGACATTCTTTCGCTCTTTATATTTTTTTCTAACTCCCTGGTCATCGCAGCAGTGAT  
CACGAATAGGAAGTTCACCTTCCCTTCTACTACCTGCTGGCTAACTGGCGGTGGCGGATTTCTTTGCC  
GGAATCGCTTATGTGTTCTGATGTTTAAACACCGCCCGGTGTCGAAAACCTTGACTGTCAACCGCTGGC  
TTCTCCGCCAGGGCTCCTAGACACAAGCCTGACGGCCTCCCTGGCCAATCTGCTGGTAATTGCTGTGGA  
AAGACACATGTCAATCATGAGGATGAGAATCCACAGCAACTTGACCAAAAACGGGTGACGCTGCTCATC  
CTGCTGGTGTGGCCATAGCCATTTTCATGGGGCGGTCCCCACGCTGGGCTGGAATTGCCTCTGCAACA  
TCTCAGCCTGCTCCTCTCTGGCCCCGATTTACAGCAGGAGTTACCTCATCTTCTGGACGGTGTCAAACCT  
CCTGGCCTTCTTCATCATGGTGGTGGTGTACGTGCGCATCTACATGTATGTCAAGAGGAAAACCAACGTC  
CTCTCTCCGCACACGAGTGGCTCCATCAGCCGCCGAGGGCCCCCATGAAGCTAATGAAGACGGTGTGA  
CTGTCTTAGGAGCCTTCGTGGTGTGCTGGACCCCGGTCTCGTGGTGTGCTGCTGGACGGCCTGAACTG  
CAAGCAGTGTAAATGTGCAGCACGTGAAGCGCTGGTTCTGCTGCTGGCGTGTCAACTCCGTCATGAAC  
CCCATCATCTACTCGTACAAGGACGAGGACATGTACAACACCATGCGGAAGATGATCTGCTGTGCCCGC  
ACGACAGCAACGCCGAGAGGCACCCTCCCGCATCCCTCTACCATCCACAGCAGGAGCGACACGGGCAG  
CCAGTACCTGGAGACAGCATCAGCCAGGGCCAGGTGTGCAATAAAAGCAGCTCC

**ACGCGT**ACGCGGCCGCTCGAGCAGAACTCATCTCAGAAGAGGATCTGGCAGCAATGATATCCTGGATT  
ACAAGGATGACGACGATAAGGTTTAA



[View online »](#)

**Protein Sequence:** >RR208154 representing NM\_023969  
 Red=Cloning site Green=Tags(s)

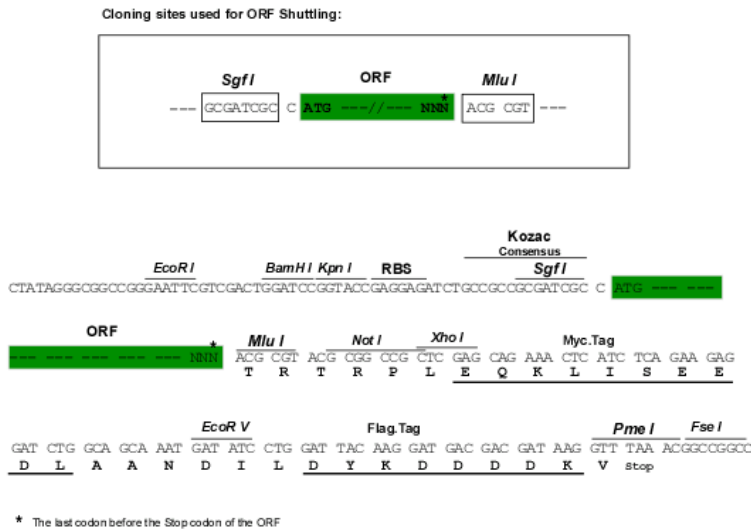
MDFYFNRSNTDTADEWTGKLVIVLCVGTFFCLFIFFSNSLVIAAVITNRKFHFPFYLLANLAVADFFA  
 GIAYVFLMFNTGPVSKTLTVNRWLLRQGLLDTSLTASLANLLVIAVERHMSIMRMRIHNSLTKRVTLII  
 LLVWAI AIFMGAVPTLGNWCLCNISACSSLAPIYSRSLIFWTVSNLLAFFIMVVVVVRIYMYVKRKTNV  
 LSPHTSGSISRRRAPMKLMKTVMTVLGAFVVCWTPGLVLLLDGLNCKQCNVQHVKRWFLLLALLNSVMN  
 PIIYSYKDEDMYNTMRKMICCAPHDSNAERHPSRIPSTIHSRSDTGSQYLEDSISQGVCKNSS

TRTRPLEQKLISEEDLAANDILDYKDDDDKV

**Chromatograms:** [https://cdn.origene.com/chromatograms/ja3030\\_h03.zip](https://cdn.origene.com/chromatograms/ja3030_h03.zip)

**Restriction Sites:** SgfI-MluI

**Cloning Scheme:**



**ACCN:** NM\_023969

**ORF Size:** 1035 bp

**OTI Disclaimer:** The molecular sequence of this clone aligns with the gene accession number as a point of reference only. However, individual transcript sequences of the same gene can differ through naturally occurring variations (e.g. polymorphisms), each with its own valid existence. This clone is substantially in agreement with the reference, but a complete review of all prevailing variants is recommended prior to use. [More info](#)

**OTI Annotation:** This clone was engineered to express the complete ORF with an expression tag. Expression varies depending on the nature of the gene.

**Components:** The ORF clone is ion-exchange column purified and shipped in a 2D barcoded Matrix tube containing 10ug of transfection-ready, dried plasmid DNA (reconstitute with 100 ul of water).

**Reconstitution Method:**

1. Centrifuge at 5,000xg for 5min.
2. Carefully open the tube and add 100ul of sterile water to dissolve the DNA.
3. Close the tube and incubate for 10 minutes at room temperature.
4. Briefly vortex the tube and then do a quick spin (less than 5000xg) to concentrate the liquid at the bottom.
5. Store the suspended plasmid at -20°C. The DNA is stable for at least one year from date of shipping when stored at -20°C.

**RefSeq:** [NM\\_023969.1](#), [NP\\_076459.1](#)

**RefSeq Size:** 2374 bp

**RefSeq ORF:** 1038 bp

**Locus ID:** 66025

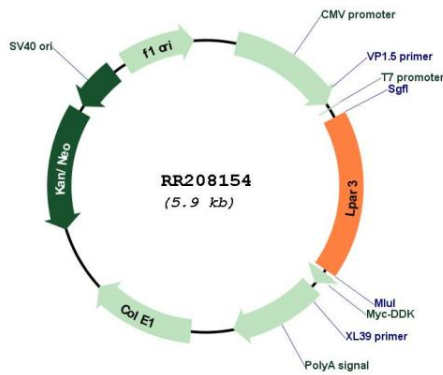
**UniProt ID:** [Q8K5E0](#)

**Cytogenetics:** 2q44

**MW:** 39.1 kDa

**Gene Summary:** G protein-coupled receptor for lysophosphatidic acid (LPA); may play a role in reproductive tissues [RGD, Feb 2006]

**Product images:**



Circular map for RR208154