

Product datasheet for **RR208144**

Ap3b1 (NM_001107646) Rat Tagged ORF Clone

Product data:

Product Type:	Expression Plasmids
Product Name:	Ap3b1 (NM_001107646) Rat Tagged ORF Clone
Tag:	Myc-DDK
Symbol:	Ap3b1
Mammalian Cell Selection:	Neomycin
Vector:	pCMV6-Entry (PS100001)
E. coli Selection:	Kanamycin (25 ug/mL)



[View online »](#)

ORF Nucleotide Sequence:

>RR208144 representing NM_001107646
 Red=Cloning site Blue=ORF Green=Tags(s)

TTTTGTAATACGACTCACTATAGGGCGGCCGGGAATTCGTCGACTGGATCCGGTACCGAGGAGATCTGCC
 GCC**CGGATCGCC**

ATGGCTGTCGCTCAGCTGTACTGGCACATCTCACCCAGGTCGGAGGCTGGTGTCAATTTCTAAATCGCTGG
 TGGCCTACTTCGCAGCCATAGGGAGGTGCAGTATATTGTATTGCAAAAATATCGCAACTATGTCAATTC
 GAGAAAGGGTATGTTTGAACCTTACCTGAAGAGCTTCTATGTCCGGTCCACTGATCCAATATGATCAAG
 ACTCTGAAGCTTGAAATCTTGACAACTTGCCAATGAAGCCAACATATCAACTCTTCTTCGAGAATTC
 AGACCTACGTGAGAAGCCAGGACAAACAGTTTGCAGCGGCCACTATTCAGACCATAGGCAGATGTGCAAC
 CAGCATTGCCGAGGTCCTGACACATGCCTCAATGGCCTGGTCTGCCTGTGTTCAACAGGGATGAAATA
 GTTGTGCTGAAAGTGTGGTGTATAAAGAAATTGTTGCAATGCAGCCTGCACAGCATGGTGAAGTAA
 TTAAGCAGATGGCGAAGCTGTTGGACAGCATCACTGTCCCTGTGGCTCGAGCAAGCATTCTTTGGCTGAT
 TGGAGAAAAGTGAACGCGTTCCTAAAATTGCTCCTGATGTTTTGAGAAAAATGGCTAAAAGTTTCACT
 AGTGAAGATGATCTGGTGAACCTGCAGATTTTAAATCTGGAGCAAAAATTGTATTTAACTAATCCAAAC
 AGACAAAATTGCTTACCCAGTACATATTAATCTCGGCAAGTATGATCAGAACTACGACATCAGAGACCC
 CACAAGATTTATTAGGCAGCTTATTGTTCCGAACGAGAAGAGTGGAGCTCTAAGTAAATATGCCAAAAA
 ATCTTTCTAGCACAGAAGCCTGCACCACTGCTGGAGTCTCCCTTTAAGACAGGGATCATTTCCAGCTTG
 GCACCTTATCTCATACTCTCAACGTTAAAGCGTCCGGGTACCTGGAATTATCTAATTGGCCAGAGGTGGC
 GCCTGACCCATCGGTTGCAATGTAGAAGTAAAGAGTGCAGCAAAAGAGTGGACCCCACTGGAAAAACA
 AAGAAAGAAAAACCTGAGAAGAAATTTTATTGAGAATCTGAGGAGGAGGAGGAGGAAGAAGAGGAAGATG
 AAGAAGATGAGGAGGAGGATCCCTCTGATAGCAGCAGTACAGTGAAGTGGTCTGGAGTGGAGTGG
 AGACTCAGGCAGCAGCAGCGAGGACAGCAGCGAGGACTCCTCCAGTGGACAAGACAGCGAGACCGGAAGC
 GAGGCAGAAGCAGAACCAGAGGGTGGCCAAGACGAACCTCAAAACCAAGAGGAAAAAGTGCCTCAGAAG
 ACAGGGAGAAGAAAAATGAAAAATCTCAGGCTCGGAGTGTCCAGTGGAGTCCAGTTCACAGAAGA
 AAGTTCTCAGAGTCAAGTCAAGGCTCTGACAGTGCAGCCTGCACCCAGAAAAACAGCTAAGGCAAAAGAA
 AGAAAACCCAGCAAGAAAGACATCCTCCCTCCAAAGATGTTTTCTTCTCGATCTGGATGACTTTAACC
 CAGTATCCACCCAGTTGCCCTTCTACACCAGCCCTTCTCCAAGCTTGATAGCTGATCTTGAAGGCT
 AAACCTGTCAACTTCTCATCCATCATCAACGTCAGTACACCTGTCTTCGTGCCACAAAAACACATGAG
 CTGCTTACCCGATGCGTGGGAAAGGACTGGCTGCCCACTACTGCTTCCAAGACAGCCTTGATCTTCCG
 GTGACAAGATGGTCTCTGTACAGATAACCTGACCAACTTCCGATGGGAAGATAGAGAACATCCACGT
 AGGCGGGAAGAAGCTTGCTGTGGGCGTGCAGATGCACGCTTCCATCCCATAGAGTCTCTGGAGCCTGAG
 GGATCCGTTACTGTCTCGATGGGTATTGACTTCTGTGATTCTACACAGACGGCCAGTTTTTCAGCTGTGCA
 CCAAGGATGATTGCTTCAACGTCAACATCCAGCCACCTGTTGGGGAGCTGCTTTTACCTGTGGCCATGTC
 AGAGAAAGACTTTAAGAAGGAGCAAGGGATGCTCACTGGGATGAATGAGACGTCGGCAACGCTCATCGCC
 GCTCCGCAGAACTTACCCCTCCATGATCCTCCAGAAGGTTGTAACGTCGCCAACCTCGGTGCAGTGC
 CTTCCAGCCAAGATAACATACACAGATATGAGAGATTAATAATTCAGTTCTTCAAGAAAGGTTTGCAGC
 TAAAACGTGTGCACAGTGGTCACTGATGCTAGTCACCGTGAACCTGAAGGAAGGTTCCACAGCCCACTT
 ATCATCAACACCGAGAAAACCGTGATTGGCTCTGTGCTGCTGAGGGAGCTGAAGCCTGTCTGTCCAGG
 GG

ACGGACCGACGCGTACGCGGCCGCTCGAGCAGAACTCATCTCAGAAGAGGATCTGGCAGCAAATGATATCC
 TGGATTACAAGGATGACGACGATAAGGTTTAA

Reconstitution Method:

1. Centrifuge at 5,000xg for 5min.
2. Carefully open the tube and add 100ul of sterile water to dissolve the DNA.
3. Close the tube and incubate for 10 minutes at room temperature.
4. Briefly vortex the tube and then do a quick spin (less than 5000xg) to concentrate the liquid at the bottom.
5. Store the suspended plasmid at -20°C. The DNA is stable for at least one year from date of shipping when stored at -20°C.

RefSeq: [NM_001107646.1](#), [NP_001101116.1](#)

RefSeq Size: 3712 bp

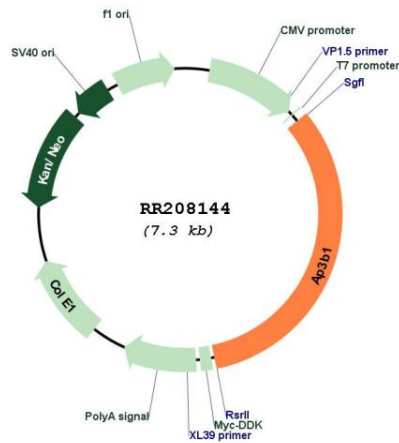
RefSeq ORF: 2385 bp

Locus ID: 309969

Cytogenetics: 2q12

MW: 87.8 kDa

Product images:



Circular map for RR208144