

Product datasheet for **RR208081**

Casp6 (NM_031775) Rat Tagged ORF Clone

Product data:

Product Type: Expression Plasmids
Product Name: Casp6 (NM_031775) Rat Tagged ORF Clone
Tag: Myc-DDK
Symbol: Casp6
Synonyms: Mch2
Vector: pCMV6-Entry (PS100001)
E. coli Selection: Kanamycin (25 ug/mL)
Cell Selection: Neomycin
ORF Nucleotide Sequence: >RR208081 representing NM_031775
Red=Cloning site Blue=ORF Green=Tags(s)

TTTTGTAATACGACTCACTATAGGGCGCCGGGAATTCGTCGACTGGATCCGGTACCGAGGAGATCTGCC
GCC**GCGATCGCC**

ATGACGGAGACAGATGGCTTCTACAGAAGTAGGGAAGTGTGGATCCAGCCGAGCAGTACAAGATGGACC
ACAAGAGGAGAGGAAGTGCCTAATCTTCAATCACGAGAGTTCTTCTGGCACCTAGCACTCCCAGAGAG
GCGGGGCACCAACGCAGACAGGGACAACCTGACTCGAAGGTTCTCAGAGCTAGGATTTGAAGTGAATGC
TTTAACGACCTCCGGGCAGAAGAACTACTGCTCAAGATTCACGAGGTGTCGACTTCCAGCCACGTAGATG
CCGATTGCTTCTGTGTCTTCTGAGCCACGGGAAGGCAACCACATTTACGCATACGATGCCAAAAT
TGAAATTCAGACCTTGACTGGCTTGTCAAAGGAGACAAGTGTGACAGCCTGGTTGGAAAACCCAAGATA
TTCATCATCCAGGCTGTGCGGGCAGCCAGCATGACGTGCCCGTGGTTCTCTGGACGTGGTGGATCATC
AGACAGACAAGCTGGACGACAACGTGACCCAGGTGGATGCTGCCTCGGTGTACACTCTGCCTGCGGGGGC
GGACTTCTCATGTGTTACTCTGTTGCAGAAGGGTATTACTCTCACCGAGAGACTGTGAACGGCTCCTGG
TACATTCAGGATTTGTGCGAGATGCTGGCCAGGCACGGTAGTTCCTGGAGTTCACCGAGCTGCTCACGC
TGGTGAACAGGAAGGTCCTCAGCGCCGTGGATTTCTGCAAAGACCCAGGTGCAATTGGCAAGAAGCA
GGTCCCTGCTTTCCTCAATGCTGACCAAAAAGCTGCATTTCTGTCCAAACCTAGTAAG

ACGCGTACGCGGCCGCTCGAGCAGAAACTCATCTCAGAAGAGGATCTGGCAGCAAATGATATCCTGGATT
ACAAGGATGACGACGATAAGGTTTAA



[View online »](#)

Protein Sequence: >RR208081 representing NM_031775
Red=Cloning site Green=Tags(s)

MTETDGFYRSREVLDPAEQYKMDHKRRGTALIFNHERFFWHLALPERRGTNADRDNLTRRFSELGFEVKC
 FNDLRAEELLLKIHEVSTSSHVDADCFLCVFLSHGEGNHIYAYDAKIEIQTLTGLFKGDKCQSLVGKPKI
 FIIQACRGSQHDVPVPLDVVHDHQTDKLDDNVTQVDAASVYTL PAGADFLMCYSVAEGYYSHRET VNGSW
 YIQDLCEMLARHGSSLEFTELLTLVNRKVSQRRVDFCKDPGAIGKKQVPCFASMLTKKLHFCPKPSK

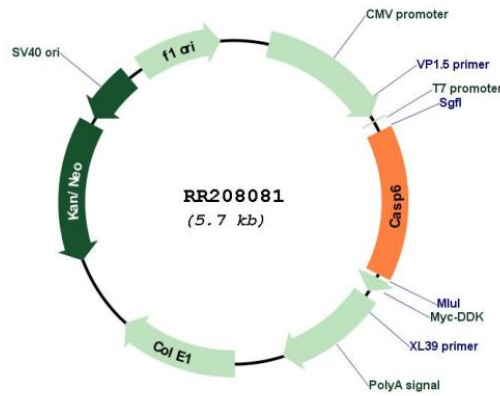
TRTRPLEQKLISEEDLAANDILDYKDDDDKV

Restriction Sites: SgfI-MluI

Cloning Scheme:



Plasmid Map:



ACCN: NM_031775
ORF Size: 831 bp

OTI Disclaimer:	The molecular sequence of this clone aligns with the gene accession number as a point of reference only. However, individual transcript sequences of the same gene can differ through naturally occurring variations (e.g. polymorphisms), each with its own valid existence. This clone is substantially in agreement with the reference, but a complete review of all prevailing variants is recommended prior to use. More info
OTI Annotation:	This clone was engineered to express the complete ORF with an expression tag. Expression varies depending on the nature of the gene.
Components:	The ORF clone is ion-exchange column purified and shipped in a 2D barcoded Matrix tube containing 10ug of transfection-ready, dried plasmid DNA (reconstitute with 100 ul of water).
Reconstitution Method:	<ol style="list-style-type: none"> 1. Centrifuge at 5,000xg for 5min. 2. Carefully open the tube and add 100ul of sterile water to dissolve the DNA. 3. Close the tube and incubate for 10 minutes at room temperature. 4. Briefly vortex the tube and then do a quick spin (less than 5000xg) to concentrate the liquid at the bottom. 5. Store the suspended plasmid at -20°C. The DNA is stable for at least one year from date of shipping when stored at -20°C.
RefSeq:	NM_031775.3 , NP_113963.2
RefSeq Size:	1605 bp
RefSeq ORF:	834 bp
Locus ID:	83584
Cytogenetics:	2q43
MW:	31.6 kDa
Gene Summary:	member of the cysteine-aspartic acid protease (caspase) family that plays a terminal role in apoptosis [RGD, Feb 2006]