

Product datasheet for **RR208075**

Ldb2 (NM_001106009) Rat Tagged ORF Clone

Product data:

Product Type: Expression Plasmids
Product Name: Ldb2 (NM_001106009) Rat Tagged ORF Clone
Tag: Myc-DDK
Symbol: Ldb2
Vector: pCMV6-Entry (PS100001)
E. coli Selection: Kanamycin (25 ug/mL)
Cell Selection: Neomycin
ORF Nucleotide Sequence: >RR208075 representing NM_001106009
Red=Cloning site Blue=ORF Green=Tags(s)

TTTTGTAATACGACTCACTATAGGGCGGCCGGAATTCGTCGACTGGATCCGGTACCGAGGAGATCTGCC
GCC**GCGATCGCC**

ATGTCCAGCACACCACATGACCCTTCTATTCTCTCCTTTGGCCATTTTATAGGAGACATACCCAT
ACATGGTACAGCCAGAGTACCGAATCTATGAGATGAACAAGAGACTGCAGTCTCGTACAGAGGACAGTGA
CAACCTCTGGTGGGATGCATTTGCCACTGAATTTTTCGAAGATGATGCCACATTAACACTTTCATTTTGT
TTGGAAGATGGACCAAAGCGATACACTATCGGCAGGACCCTCATCCCCGTTATTTTAGCACCGTATTTG
AAGGAGGGGTGACAGACCTGTAATACTCTCAAACACTCGAAGGAGTCGTACCACAACATCCATCAC
AGTAGACTGTGACCAGTGTGCCATGGTCACACAGCATGGGAAGCCATGTTTACCAAGGTATGCACGGAA
GGCAGGCTGATCTGGAGTTCACCTTTGATGACCTCATGAGAATAAAAACATGGCACTTTACCATTAGAC
AGTACAGGGAGCTGGTCCCCAGAAGCATACTAGCCATGCACGCACAAGATCCTCAGGTCCTGGATCAGCT
GTCCAAAAATACACCAGGATGGGTCTAACAACCTCACCTCACTACCTCAGGTTGTGTGTAATACTG
GAGCCAATGCAGGAAGTGTGTCGAGACACAAAACCTACAACCTCAGTCCCCGGGACTGCCTGAAGACCT
GTCTGTTTCAGAAGTGGCAGCGGATGGTGGCACCGCCAGCAGAACCCACAAGGCAACCGACAACCAAAAG
GAGAAAACGAAAAAAGTCCACGAGCAGCAGCTCCAACAGCAGTGTGGGAACACAACCAACAGCGCCGGC
AGCAAGAAGAAGACCACAGCCGCGAGCCTGAGCCTGTCCACTCAGGTACCTGATGTGATGGTGGTAGGAG
AGCCAACCTCTGATGGGAGGTGAGTTTGGGGACGAGGACGAAAGGCTAATCACTAGATTAGAAAACACGCA
GTATGATGCGGCCAACGGCATGGACGACGAGGAAGACTTCAACAATTCACCTGCCCTGGGGAACAACAGC
CCGTGGAACAGTAAACCTCCCGCCACGCAAGAGACCAAATCAGAAAACCCCCACCCAGGCTTCCCG

ACGCGTACGCGGGCCGCTCGAGCAGAAACTCATCTCAGAAGAGGATCTGGCAGCAAATGATATCCTGGATT
ACAAGGATGACGACGATAAGGTTTAA



[View online »](#)

Protein Sequence: >RR208075 representing NM_001106009
 Red=Cloning site Green=Tags(s)

MSSTPHDPFYSSPFGPFYRRHTPYMVQPEYRIYEMNKRLQSRTESDNLWDAFATEFFEDDATLTL SFC
 LEDGPKRYTIGRTLIPRYFSTVFEGGVDLYIILKHSKESYHNSSITVDCDQCAMVTQHGKPMFTKVCTE
 GRLILEFTFDDLRIKTIWHFTIRQYREL VPRSILAMHAQDPQVLDQLSKNITRMGLTNFTLNYLR LCVIL
 EPMQELMSRHKTYNLSPRDCLKLCLFQKWQRMVAPPAEPTRQPTTKRRKRKNSTSSSTSNS SAGNTTNSAG
 SKKKTTAASLSLSTQVPDVMVVGEPTLMGGEFGDEDERLITRLENTQYDAANGMDDEEDFNNSPALGNNS
 PWNSKPPATQETKSENPPPPQASQ

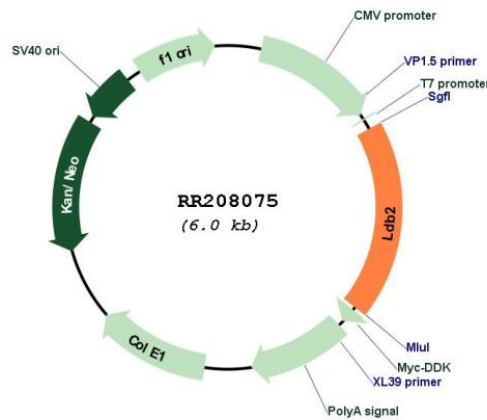
TRTRPLEQKLISEEDLAANDILDYKDDDDKV

Restriction Sites: SgfI-MluI

Cloning Scheme:



Plasmid Map:



ACCN: NM_001106009

ORF Size:	1119 bp
OTI Disclaimer:	The molecular sequence of this clone aligns with the gene accession number as a point of reference only. However, individual transcript sequences of the same gene can differ through naturally occurring variations (e.g. polymorphisms), each with its own valid existence. This clone is substantially in agreement with the reference, but a complete review of all prevailing variants is recommended prior to use. More info
OTI Annotation:	This clone was engineered to express the complete ORF with an expression tag. Expression varies depending on the nature of the gene.
Components:	The ORF clone is ion-exchange column purified and shipped in a 2D barcoded Matrix tube containing 10ug of transfection-ready, dried plasmid DNA (reconstitute with 100 ul of water).
Reconstitution Method:	<ol style="list-style-type: none"> 1. Centrifuge at 5,000xg for 5min. 2. Carefully open the tube and add 100ul of sterile water to dissolve the DNA. 3. Close the tube and incubate for 10 minutes at room temperature. 4. Briefly vortex the tube and then do a quick spin (less than 5000xg) to concentrate the liquid at the bottom. 5. Store the suspended plasmid at -20°C. The DNA is stable for at least one year from date of shipping when stored at -20°C.
RefSeq:	<u>NM_001106009.1, NP_001099479.1</u>
RefSeq Size:	1937 bp
RefSeq ORF:	1122 bp
Locus ID:	289664
Cytogenetics:	14q21
MW:	42.7 kDa