

Product datasheet for **RR208062**

Erc5 (NM_001106910) Rat Tagged ORF Clone

Product data:

Product Type:	Expression Plasmids
Product Name:	Erc5 (NM_001106910) Rat Tagged ORF Clone
Tag:	Myc-DDK
Symbol:	Erc5
Synonyms:	Xpg
Vector:	pCMV6-Entry (PS100001)
E. coli Selection:	Kanamycin (25 ug/mL)
Cell Selection:	Neomycin



[View online »](#)

ORF Nucleotide Sequence:

>RR208062 representing NM_001106910
 Red=Cloning site Blue=ORF Green=Tags(s)

TTTTGTAATACGACTCACTATAGGGCGGCCGGAATTCGTCGACTGGATCCGGTACCGAGGAGATCTGCC
 GCC**CGCATCGCC**

ATGGGAGTGCAGGGGCTGTGGAAGTTGCTGGAGTCTCTGGCCGCCGGTCAGCCCGGAGGCGCTAGAGG
 GCAAGGTCTGGCCGTGGATATTAGCATTGGCTAAACCAAGCACTTAAAGGAGTCCGAGATCGCCATGG
 AAATGCAATAGAAAATGCTCATCTTCTCACATTATCCACCGGCTCTGAAAACCTTTGTTTTCCGCATC
 CGTCTATTTTTGTATTTGATGGTATGCTCCACTGCTAAAGAAACAGACCTTGGCAAAGAGAAGGCAGA
 AGAAGGATTCTGCATCCATTGACTCGAGAAAAACCACAGAGAAGCTTCTGAAAACCTTTCTGAAGAGACA
 GGCTCTGAAAACGCCTTCAGAAGCAAAAGAAATGAAGTGTACCCAGTCTTACTCAAGTCAAAGAGAG
 GATGACATCTATGTTTTGCCACCTTACAAGAGGAAGAAAACATAGTTCAGAAGAGGAAGATGAAAAGC
 AATGGCAAGCAAGATGGATCAAAAGCAAGCTTTCAGGAAGAATCTTTATAATCCTCATGCCATAGA
 TATCGAGTCTGAGGATTCAGCAGCCTGCCTCCTGAGGTAAGCATGAGATCTTGACTGACATGAAAGAG
 TTTACCAAGCGAAGACGGACATTGTTTGAAGCAATGCCAGAGGAGTCTAATGACTTTTCACAGTATCAGC
 TGAAAGGCTTGCTTAAGAAAACTACCTAAACCAGCACATAGAAAATGTCCAGAAGGAAATGAACCAGGA
 ACATTCAGGACAAATCCAGAGGCAATATGAAGACGAGGGAGGCTTTCTGAAGGAAGTTCGAGTTCGAGGAGA
 GTGGTTGCTGAAGACACCTCACACTACATCTTGATAAAAAGGAATCAAGGAAAGAAAGTCGTGGATGTGG
 ATTTAGAATCTCTTCTTCCAGCAAAGAACACAGTGTGTCTTCAACCTGAAGTTCATCACCTTATGA
 GAAAGTGAAGCCAGAGAGCGAGCCAGAGGCCACACCTCCTTCTCCAAGAACTTTACACGCTATTCAGTA
 GCCATGCTGGGAGGTAGCTCAGAAGAGGAGCCGGAGAGTGGAGAAGGAGGGCAGTCAAGGAGAGAAGTG
 CGTGGGCCACTGCAGATGCAGGCTCCATTTACCACAGACCTGTGCAGCTATTCAGAGAGCTTGGATGA
 TGATGAAGAGGAGAGAATGTGTGCCAGCAGTATAATCTGGCCGTGGAATGCTGCTTGGAAATGGTCTG
 AAGCAGGAGCACCTGATGAAGTGGTAGTAAAAGTGGAGGCGTCCACTTGACACAGCATCTTTTTAC
 CCAGTGTGACTGAGGTAGAGGAGTGTGTGGCCAGTGCCAGCAATGACAAAGAGCAGACAGCCTCAACTCA
 TGCATCTAGTACTGCTTGTATCCAGGTGAAGTCCCCAAAGAAACAGTATCTCTGCTCATGTGGTGA
 GAAGCATCTCAGATAAGTAGTGTGAGTGTGAGGTGCTGGTAGGCCAGTTCCTTCCCTCAGCATTATAG
 AAACCTCCATGCAGTTATGCCTCTGGGGTCTCAGTGAAGGGAACCTCACCTGGCACCTCCAATAAGAAC
 ACATTCATCAGAGGACGAGCATAGACCCTGAAGAGCCTGAGCTACAAAATGGACTCTGCCACCCAAG
 AACACGTGTAATTCCTCTCATCTTTCAAGTGTATGAAACAGAAAGGTGGACAAAATCCTGCTTCCAAG
 CAGGTAGCACAGTTCATGTCCTTCAGAGGCAGTAGGTAAAGTAAAGAAAGGTGTCGTCTTCTAATGCTGA
 AGAACATGGAGATTTCCAGAAAACATCCAGCTATGGGAGATGCCTGAGGCTGCTGCCAGGGAGCTGATT
 TCAGCCCCAGAGTCCCTGGGACCAGTGGAGATGGAGTCTGAAGAGAGCGAGTCTGATGGAAGTTTCATTG
 AGGTGCAGAGTGTGATCAGCAATGATGAACTTCAATAGAGTCTCAGAGATTTCTAAGCATCTCTCTGA
 AAAAGATGCAGAGGAACCTAAAGAACTCTGGAGGAAGGAAGCCCCAGGAAACACAGAGTGCCTCTACAA
 GACAGCTCTGACATCAAGGCAATGAAGGAACACAGAAAAGAAGACAGAGGTGCTGAGGACTACCCGACG
 AATGGCAAGATGTTAATTTGGAGGAAGTGGATGCCCTGGAGAGTAACCTCTTAGCAGAACAGAATCACT
 GGAAGCTCAAAAACAGCAGCAAGATCGGATTGCTGCCTCTGTAACAGGCCAGATGTTTCTGGAAGGCCAG
 GAACTCCTGCGTCTCTTTGGCATTCCCTACATCCAGGCTCCCATGGAGGCAGAGGCACAGTGCGCCATTC
 TGGACCTCACTGATCAGACTTCTGGAACCTACTGATGATAGTATCTGGCTGTTTGGGGCCCGGCA
 TGTCTATAAGAATTTTTTAAACAAAACAAGTTTGTAGAGTACTATCAGTATGTGGACTTTTACAACCAA
 TTGGAGAGTGGTGGCACAAAGCTCAAAAATAACAAGAAGGCTGCAGAAAATCCCTATGACACCAAAG

ACGCGTACGCGGCCGCTCGAGCAGAACTCATCTCAGAAGAGGATCTGGCAGCAATGATATCCTGGATT
 ACAAGGATGACGACGATAAGGTTTAA

Protein Sequence: >RR208062 representing NM_001106910
Red=Cloning site Green=Tags(s)

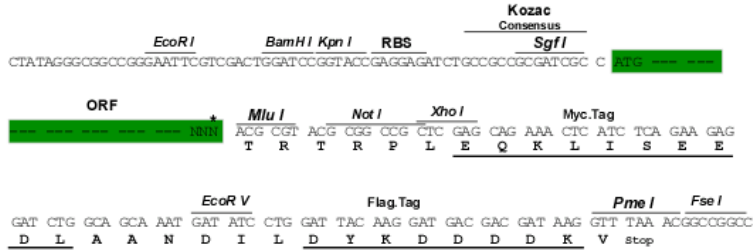
MGVQGLWKLLECSGRPVSPPEALEGKVLAVDISIWLNQALKGVRDRHGNAIENAHLLTLFHRLCKLLFFRI
RPIFVFDGDAPLLKKQTLAKRRQKKDSASIDSRKTTTEKLLKTFLLKQALKTAFRSKRNEVLPSLTQVQRE
DDIYVLPPLQEEKHSSEEEDEKQWQARMQKQALQEEFFHNPHADIESEDFSSLPPEVKHEILTDMKE
FTKRRRTLFEAMPEESNDFSQYQLKGLLKKNYLNQHIENVQKEMNQEHSQIQRYEDEGGFLKEVESRR
VVAEDTSHYILIKGIQGKVVVDVLESLPSSSKEHSVSFNLKSSPYEKVKPESEPEATPPSPRTLHAIQV
AMLGGSSEEEPESEGGQSKERSAWATADAGSISPQTCAAIQRALDDDEEERMCASDNLAVEMLLGNL
KQEHADVVVKGKGVPLDTASLLPSVTEVEECVASASNDKEQTASTHASSTACHPGEVPKETVSPAHVVS
EASQISSECEVAGRPVPLPSAFIETPCSYASGVLSERELTLAPPIRTHSHQRTSIDPEEPELQNGLCPPK
NTCNSSHLSSDDETEGGQNPASKAGSTVHVPSEAVGNVENVSSNAEEHGDFQKTIQLWEMPEAAARELI
SAPESLGPVEMESESESDGSFIEVQSVISNDELQIESSEISKHLSEKDAEPEKTEEGSPRNTECLLQ
DSSDIKAMKEHRKEDRGAEDSPDEWQDVNLEELDALESNLLAEQNSLEAQKQQQDRIAASVTGQMFLESQ
ELLRLFGIPYIQAPMEAEAQCAILDLDQTSGTITDDSDIWLFGARHVYKNFFNKNKFVEYYQYVDFYNQ
LESGGTLKITRRLQKIPMPK

TRTRPLEQKLISEEDLAANDILDYKDDDDKV

Restriction Sites: Sgfl-Mlul

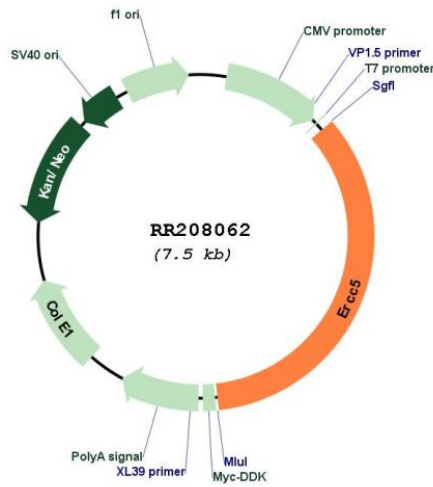
Cloning Scheme:

Cloning sites used for ORF Shuttling:



* The last codon before the Stop codon of the ORF

Plasmid Map:



ACCN:	NM_001106910
ORF Size:	2586 bp
OTI Disclaimer:	The molecular sequence of this clone aligns with the gene accession number as a point of reference only. However, individual transcript sequences of the same gene can differ through naturally occurring variations (e.g. polymorphisms), each with its own valid existence. This clone is substantially in agreement with the reference, but a complete review of all prevailing variants is recommended prior to use. More info
OTI Annotation:	This clone was engineered to express the complete ORF with an expression tag. Expression varies depending on the nature of the gene.
Components:	The ORF clone is ion-exchange column purified and shipped in a 2D barcoded Matrix tube containing 10ug of transfection-ready, dried plasmid DNA (reconstitute with 100 ul of water).
Reconstitution Method:	<ol style="list-style-type: none">1. Centrifuge at 5,000xg for 5min.2. Carefully open the tube and add 100ul of sterile water to dissolve the DNA.3. Close the tube and incubate for 10 minutes at room temperature.4. Briefly vortex the tube and then do a quick spin (less than 5000xg) to concentrate the liquid at the bottom.5. Store the suspended plasmid at -20°C. The DNA is stable for at least one year from date of shipping when stored at -20°C.
RefSeq:	NM_001106910.1 , NP_001100380.1
RefSeq Size:	3750 bp
RefSeq ORF:	2589 bp
Locus ID:	301382
Cytogenetics:	9q22
MW:	96.1 kDa
Gene Summary:	putative member of the excision repair cross-complementaing repair deficiency family; shares sequence homology with mouse Erc5 and thus may play a role in DNA repair activities [RGD, Feb 2006]