

Product datasheet for **RR208014**

Pla2g4b (NM_001107764) Rat Tagged ORF Clone

Product data:

Product Type:	Expression Plasmids
Product Name:	Pla2g4b (NM_001107764) Rat Tagged ORF Clone
Tag:	Myc-DDK
Symbol:	Pla2g4b
Mammalian Cell Selection:	Neomycin
Vector:	pCMV6-Entry (PS100001)
E. coli Selection:	Kanamycin (25 ug/mL)



[View online »](#)

ORF Nucleotide Sequence:

>RR208014 representing NM_001107764
 Red=Cloning site Blue=ORF Green=Tags(s)

TTTTGTAATACGACTCACTATAGGGCGGCCGGAATTCGTCGACTGGATCCGGTACCGAGGAGATCTGCC
 GCC**CGGATCGCC**

ATGGCTCTGCAAACCTGCCCGTCTACATGCGAGCAAAGGTGCCAGAGACACACCTGCTCACTGTCCGCG
 TCCTCCAGGCTAGTGGCCTGCCTTCCAAGGACCTAGTGACATCCTCTGACTGCTATGTGACTCTGAACCT
 GCCCACGGCCTCCAGCGGCACGCTCCAGACACGCACAGTCAAGAACAGCAGAAACCCAGTCTGGAATCAG
 AACTTCCACTTCCGGATCCATAGGCAGCTCAAGAATGTTATGAACTGAAAGTCTTTGACCAGGACCTGA
 TGACCAAAGATGACCCAGTGTGTGAGTGTGTTGACGTGGGGACTCTGCAAGTTGGGACTCAGCGCCA
 GAGCTTCTCATTGAGCGCTCAGGAGGATGGGCGCTTGAAGTTGAGTTTCGGCTACAGACTCTGACAGAC
 TGTGAGGAACAGCTTATCAGCAATGGTATCCTGGTGGCCAGGAGCTCTCCTGCTGCATGTTGAACTGA
 AGAGGACAGGAGACCCAAAGAGGTGAGAGCGCAAAGTTCAACTTGTGTTGCTGCGGCTCGGAGGTCC
 ACAGGAAGCCCCGTGGGCACCGGGTCTTCCGCTTCCATTATCCAGCCTGCTGGGAGCAAGAGCTCAGT
 GTTCATCTGCAGGATGACCCCATGAGCAGCTGAAGGTGCCATTGCGAATCTACCTCTTCGACAGCTGG
 TGAGACTTGTCTTCCCCACGTCCAGGAGCCACTGATGAGTTGAACTCAAGAAAGAAGACGGGCCAAA
 GGAGCTGGCCGTGCGGCTGGGCTGTGGGCCCTGCCCGAGGAACAGGCCTTCTAAGCAAGAGGAAGCAG
 GTGGTGGCCGCGCCCTGAAAAAGGCCTTACAGCTGGACCAAGACCTGCAGGAGGACGAGATCCCAGTGA
 TTGCTGTGATGGCCACTGGTGGTGGGATCCGGGCGATGACTTCGTTATACGGACAGCTGGCTGGCCTGAA
 GGAGCTTGGCCTTCTGGACTGCATCTCTACATCACTGGGCTTCCAGGTCCACATGGGCATTGGCCAAT
 CTCTATGAGGACCCAGAGTGGTCTCAGAAGGACCTAGCAGGGCCCACTGAGATGCTGAAGACCCAGGTAA
 CAAAGAGCAAACCTGGGCGCATTGGCCCCAGCCAGCTTTGGCGGTACCGGCAAGAGCTGGCTGACGCTGC
 TCGCCTGGGCTACCCAACCTGTTCAACCAACTGTGGGCCCTTATTAATGAGGCCTTGTGCACGACAAG
 CCACATGAACACAACTCTCAGATCAACGAGAGGCCCTGAGTCGAGGCCAGAACCCTCTGCCTATCTACT
 GTGCCCTTAATAGCAAGGAGAAGGGCCTAAGCACCTTTGAATTTGGCGAATGGTGCAGTTCTCTCCCTA
 CGAAGTCGGCTTCCCAAGTACGGAGCCTTCACTCCCTCTGAGCTCTTTGGTTCTGAGTTTTTCATGGGG
 CGGCTGGTGAAGCAGCTCCCTGAGTCTCGCATTGCTTCTGGAAGGTATCTGGAGCAATCTGTTTGCAG
 CCAGCCTCCAAGACAGCTTCTACTGGTCTCTGAACCCAGCCAGTTCTGGGACCCTGGGCCAGGATCA
 GGCCAATCTGGACAAAGAGCAGGTCTCCATCTGAAGATAGCAGAACCTCCACAGCGGCTGGCAAGATC
 GCAGAGCTTCTACTGACCTCTGACAAAGCGCCCCCTCGCCAGGCCACCCACAACCTTCTGCGCGGTC
 TCCATTTCCACAAGGACTATTTCCACCACCTCACTTCTCCACCTGGAAAGCTTCCAAACTAGACAAGTT
 CCCCACCCAGCTGACACCCGCGGAGCCCCACCTCTGCCTCCTGGATGTTGGCTATTTTCATCAACTAGT
 TGCCACCCCTCCTTACGCCAACACGGGATGTGGACCTCATTTGCTCACTGGACTACAACCTCTCCGGAG
 CCTTTCAGCAGCTGCAGCTTGTGAGCCGGTTCTGCCAGGAGCAGGGCATTCTTTCCCATCCATCTCGCC
 CAGCCCTGAGGAGCAGCGTCAGCCTCAGGAGTCCATATGTTCTGTGACCAGCCAGCCGGAAGCCCCA
 GCTGTGTTGCACTTCCCCTGGTCAATGACTCCTTCAAGGACCACTCAGCCCTGGGGTGCCACGGACGT
 CGGAGGAGAAGACAGCTGGGAGGTGAATCTGTCTTCTCCAACCTCCCATATGACTACACAAAAGTGAC
 CTACAGCCAGGAAGATGTGGACAAGCTGTTACGACTGACGATTACAACATCTGCAACAACCCAGGATCGG
 CTGCGGGAGGCCATGCACCAGGCCGTGCAGCGGCGGAGAAACCGCAGACAGTTTAGCGGGAG

ACGCGTACGCGGCCGCTCGAGCAGAAACTCATCTCAGAAGAGGATCTGGCAGCAAATGATATCCTGGATT
 ACAAGGATGACGACGATAAGGTTTAA

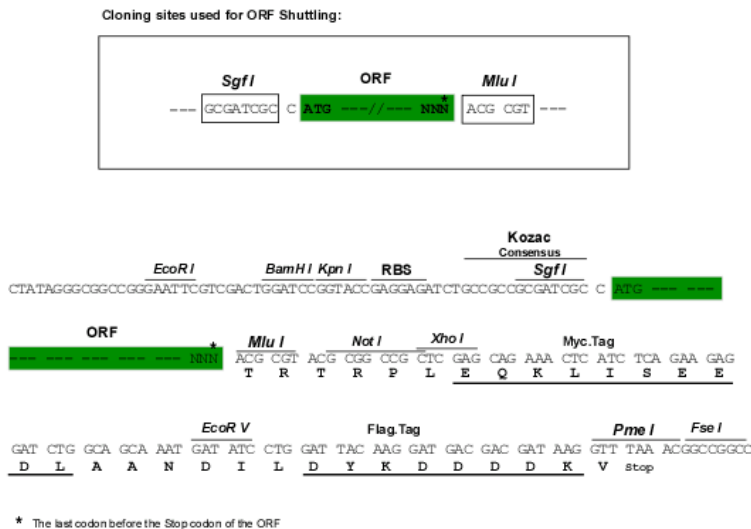
Protein Sequence: >RR208014 representing NM_001107764
 Red=Cloning site Green=Tags(s)

MALQTCPVYMQAKVPETHLLTVRVLQASGLPSKDLVTSSDCYVTLNLPTASSGTLQTRTVKNSRNPVWNO
 NFHFRIHRQLKNVMEKVFQDLMTKDDPVLVSLFDVGTQVGTQRQSFSLSAQEDGRLEVEFRLQTLTD
 CEEQLISNGILVAQELSCLHVELKRTGDPKRSEKRVQLVVAACEGPQEAAPVGTGSRFRHYPACWEQELS
 VHLQDDPHEQLKVPLRTPSSQLVRLVFPTSQEPLMRLELKKEDGPKELAVRLGCGPCPEEQAFLSKRKQ
 VVAALKKALQLDQDLQEDEIPVIAVMATGGGIRAMTSLYQLAGLKLGLLDCISYITGASGSTWALAN
 LYEDPEWSQKDLAGPTEMLKTQVTKSKLGALAPSQLWRYRQELAERARLGYPTCFNLWALINEALLHDK
 PHEHKLSDQREALSRGQNPLPIYCALNSKEKGLSTFEFGEWCEFSPYEVGFPKYGAFIPSELFGEFFMG
 RLVKQLPESRICFLEGIWSNLF AASLQDSFYWSSEPSQFWRWAQDQANLDKEQVSHLKIAEPPTAAGKI
 AELFTDLLTKRPLAQATHNFMRLHFHKDYFHHPHFSTWKASKLDKFPNQLTPAEPHCLLDVGYFINTS
 CPPLLQPTRDVLILSLDYNLSGAFQQLQLVSRFCQEQGIPFPSISPSPEEQRPQECHMFCDAQPEAP
 AVLHFPLVNSFRDHSAPGVPRTSEEKTAGEVNLSSNSPYDYTKVTYSQEDVDKLLRLTHYNICNNQDR
 LREAMHQAVQRRRNRQFRRE

TRTRPLEQKLISEEDLAANDILDYKDDDDKV

Restriction Sites: SgfI-MluI

Cloning Scheme:



ACCN: NM_001107764

ORF Size: 2373 bp

OTI Disclaimer: The molecular sequence of this clone aligns with the gene accession number as a point of reference only. However, individual transcript sequences of the same gene can differ through naturally occurring variations (e.g. polymorphisms), each with its own valid existence. This clone is substantially in agreement with the reference, but a complete review of all prevailing variants is recommended prior to use. [More info](#)

OTI Annotation: This clone was engineered to express the complete ORF with an expression tag. Expression varies depending on the nature of the gene.

Components: The ORF clone is ion-exchange column purified and shipped in a 2D barcoded Matrix tube containing 10ug of transfection-ready, dried plasmid DNA (reconstitute with 100 ul of water).

Reconstitution Method:

1. Centrifuge at 5,000xg for 5min.
2. Carefully open the tube and add 100ul of sterile water to dissolve the DNA.
3. Close the tube and incubate for 10 minutes at room temperature.
4. Briefly vortex the tube and then do a quick spin (less than 5000xg) to concentrate the liquid at the bottom.
5. Store the suspended plasmid at -20°C. The DNA is stable for at least one year from date of shipping when stored at -20°C.

RefSeq: [NM_001107764.2](#), [NP_001101234.2](#)

RefSeq Size: 2812 bp

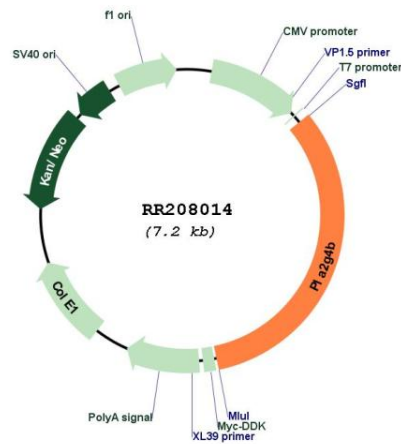
RefSeq ORF: 2376 bp

Locus ID: 311341

Cytogenetics: 3q35

MW: 89.6 kDa

Product images:



Circular map for RR208014