

## Product datasheet for **RR208004**

### Slc28a3 (NM\_080908) Rat Tagged ORF Clone

#### Product data:

Product Type:	Expression Plasmids
Product Name:	Slc28a3 (NM_080908) Rat Tagged ORF Clone
Tag:	Myc-DDK
Symbol:	Slc28a3
Synonyms:	Cnt3
Mammalian Cell Selection:	Neomycin
Vector:	pCMV6-Entry (PS100001)
E. coli Selection:	Kanamycin (25 ug/mL)



[View online »](#)

ORF Nucleotide  
Sequence:

>RR208004 representing NM\_080908  
 Red=Cloning site Blue=ORF Green=Tags(s)

TTTTGTAATACGACTCACTATAGGGCGGCCGGAATTCGTCGACTGGATCCGGTACCGAGGAGATCTGCC  
 GCC**CGGATCGCC**

ATGTCCAGGT**CAGACCCAGACCCGGAAAGAATT**CGGAGCCAGTAAGAGCAAGATGAGCCTGGAGCTGA  
 GGCCAACAGCCCCAGCGACCAGGGCCGCTCAACGAAGCCTTCCAGGATGAAGACCTGGAAGAGCAGAA  
 CGCTCCAGGAAACAGCACAGTCAGGAGCAGAGTTGTACAGAGTGGGGAGCAAGGACGGGCCAAACAGGAC  
 GACAGGCAGATCACGATTGAGCAGGAGCCTCTAGGACCCAAAGAAGGCACAGAGGAAGAGAGCGAAGATG  
 AACGTCAGAAAGGGTTCTTGGAAAGGAAGTATGATACGGTTTGTGAGTTTGTAGAAAGCACAGAGTCAT  
 TCTCCAGCACACCATCTGGGCAGTTTTACTGACAGTTTCTGGCCCTGGTGATTGCAGCCTGTGCACTA  
 AACTTCCACCGAGCCCTCCCTTTTTGTGATCACCTGGTGACCATCTTCTCGTCGTCTGGGATCGCT  
 TGATGGCCAAATACGAACAGCGAATCGATGATGCTCTCCCGCAAAGGCTGCTTGAGAGGCATTG  
 GTTCTGGCTGAAGTGGGTGGTCTGGTGCTCACTGATCTTGGCGGTCACTTCTGGCTGGCTGAGACAG  
 GCCAGGCTGGGCCAACAGCAGCTGATATCCTTTGGTGGGCTCGTCATGTATATTGTTCTGCTATTCTGT  
 TTTCCAAGCATCCGACCAGAGTTTACTGGAGGCCTGTCTTTGGGGAATTGGACTGCAGTTTCTTCTTGG  
 GCTCTTAATTCTAAGGACTAGGCCTGGATTTGTTGCTTTTGGAGAAAAGTATACAGACCACTTCTTTCATTTA  
 AGATCCTTCCCATTGTGGTTTTCTTCCAGCACCGTGATGTCTATGCTCTATTATCTGGGACTGATGCAGTG  
 GATTATCAGAAAGGTTGGGTGGCTAATGCTTGTCACTATGGGGTCATCTCCATTGAGTCCGTAGTTGCT  
 GCTGGCAACATATTTGTTGGGCAAACAGAGTCTCCACTACTGGTCAACCATATCTACCACACGTACCA  
 AGTCAGAACTGCACACCATCATGACAGCTGGTTTTGCCAGATTGCTGGGAGCGTTGGGCGCGTACAT  
 CTCTTTTGGGGTGTCTATCACACTTGTCTACCCTTCTGTATGTCCGGCCTGCAGCCCTGGCTGTG  
 GCCAAACTCTTTTGGCCTGAAACAGAGAAAACCCAAAATAACCCTCAAGAATGCCATGAAAATGAAAATG  
 GTGATTCGGAATCTCCTGGAGGCGGCCACGCAGGGTGCATCTTCGTCATCCCTGGTGGCAAACAT  
 CGCTGCAAATCTGATCGCCTTCTGGCCTTGTCTTCTTGTGAACTCCGCTCTGTCTTGGTTTGGAAAGC  
 ATGTTGACTACCCACAGCTGAGTTTCCAGCTCATTTGTTTACATCTTCATGCCTTCTCCTTCATGA  
 TGGGAGTCGACTGGCAAGACAGATTTATGGTCGCCAAACTCATAGGCTACAAGACGTTCTTCAATGAATT  
 TGTGGCTTATGAACACCTCTCAAATTCATCAATTTGAGGAAAGCGGCTGGACCCAAATTTGTAATGGT  
 GTGCAGCAATATATGTCAATTCGCTCGGAGACCATCGCAACTACGCCCTCTGTGGTTTTGCCAATTTTG  
 GTTCCCTAGGAATAGTGATCGGTGGACTTACGTCTATAGCTCCGTCCAGAAAGCGAGACATTGCCTCGGG  
 AGCCATGAGAGCCCTGATTGCTGGGACCATTGCCTGCTTCATGACAGCCTGCATCGCTGGCATGCTCTCT  
 GACACCCCGGTGGCTATCAACTGCCACCAGTTCTAGAGAGCAGCAAAGTACTCAGCAACACAAGTGAAG  
 TGGCGTCTTGTGTAAGGCCTGTTCAACAGCACTGTTGCCAGGGGACCAATGACGTCCTCCAGGAGG  
 AAATTCAGCCTCTACACTTTGAAGAGCTGCTGCAACCTGCTGAAACCACCAACGCTGAAGTGTGGTTGG  
 ATCCCTAACATACCG

**ACGCGT**ACGCGGCCGCTCGAGCAGAAACTCATCTCAGAAGAGGATCTGGCAGCAAATGATATCCTGGATT  
 ACAAGGATGACGACGATAAGGTTTAA

**Protein Sequence:** >RR208004 representing NM\_080908  
 Red=Cloning site Green=Tags(s)

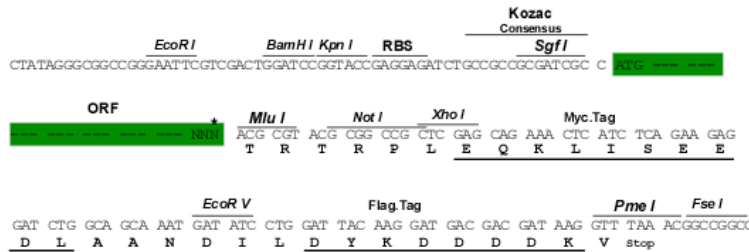
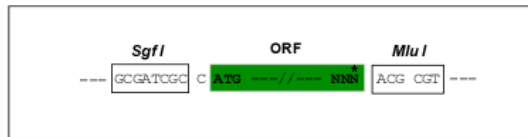
```
MSRSDPDGPKNSEPSKSKMSLELRPTAPSDQGRLNEAFQDEDL EEQNAPGNSTVRSRVVQSGEQGRAKQD
DRQITIEQEPLGPKEGTEEESEDERQKGFLEKRYDTCVCEFCRKHVRVILQHTIWA VLLTGFLALVIAACAL
NFHRALPLFVITLVITLFFVWDRMLAKYEQRIDDLVSPGKRLLERHWF LKWVWVCSLILAVILWLALDT
ARLGGQQLISFGGLVMIYVLLFLFSKHPTRVYWRPVFWGIGLQFL LGLLILRTRPGFVAFDWMGKQVQTF
LGYT DAGA QFVFGKYTDHFFAFKILPIVVFSTVMSMLYYLGLMQW IIRKVGWMLVMTMGSSPIESVVA
AGNIFVGQTESPLL VQPYLPHVTKSELHTIMTAGFATIAGSVLGAY ISFGVSSTHLLTASVMSAPAALAV
AKLFWPETEKPKITLKNAMKMENGDSRNLLAATQGASSIPLVANIAANLIAFLALLSFVNSALSWFGS
MFDY PQLS FELICSYIFMPFSFMMGVDWQDRFMVAKLIGYKTFNEFVAYEHL SKFINLRKAAGPKFVNG
VQQYMSIRSETIATYALCGFANFGSLGIVIGGLTSIAPSRKRDIASGAMRALIAGTIACFMTACIAGMLS
DTPVA INCHHVLESSKVL SNTTEVASCCQGLFNSTVARGPNDVLP GGNFSLYTLKSCCNLLKPPTLNCGW
IPNIP
```

TRTRPLEQKLI SEEDLAANDILDYKDDDDKV

**Restriction Sites:** SgfI-MluI

**Cloning Scheme:**

Cloning sites used for ORF Shuttling:



\* The last codon before the Stop codon of the ORF

**ACCN:** NM\_080908

**ORF Size:** 2115 bp

**OTI Disclaimer:** The molecular sequence of this clone aligns with the gene accession number as a point of reference only. However, individual transcript sequences of the same gene can differ through naturally occurring variations (e.g. polymorphisms), each with its own valid existence. This clone is substantially in agreement with the reference, but a complete review of all prevailing variants is recommended prior to use. [More info](#)

**OTI Annotation:** This clone was engineered to express the complete ORF with an expression tag. Expression varies depending on the nature of the gene.

**Components:** The ORF clone is ion-exchange column purified and shipped in a 2D barcoded Matrix tube containing 10ug of transfection-ready, dried plasmid DNA (reconstitute with 100 ul of water).

**Reconstitution Method:**

1. Centrifuge at 5,000xg for 5min.
2. Carefully open the tube and add 100ul of sterile water to dissolve the DNA.
3. Close the tube and incubate for 10 minutes at room temperature.
4. Briefly vortex the tube and then do a quick spin (less than 5000xg) to concentrate the liquid at the bottom.
5. Store the suspended plasmid at -20°C. The DNA is stable for at least one year from date of shipping when stored at -20°C.

**RefSeq:** [NM\\_080908.1](#), [NP\\_543184.1](#)

**RefSeq Size:** 2118 bp

**RefSeq ORF:** 2118 bp

**Locus ID:** 140944

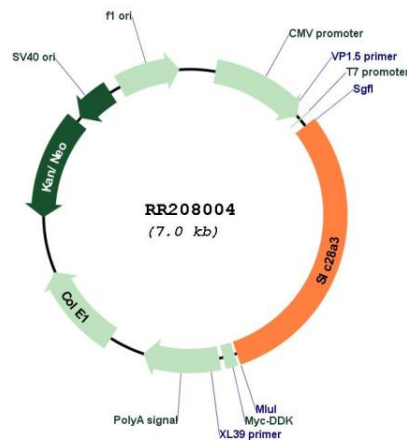
**UniProt ID:** [Q8VIH3](#)

**Cytogenetics:** 17p14

**MW:** 78.4 kDa

**Gene Summary:** member of a family of sodium-dependent, concentrative nucleoside transporters; may transport both pyrimidine and purine nucleosides [RGD, Feb 2006]

### Product images:



Circular map for RR208004