

Product datasheet for **RR208000**

Insc (NM_001106285) Rat Tagged ORF Clone

Product data:

Product Type:	Expression Plasmids
Product Name:	Insc (NM_001106285) Rat Tagged ORF Clone
Tag:	Myc-DDK
Symbol:	Insc
Synonyms:	RGD1311379
Vector:	pCMV6-Entry (PS100001)
E. coli Selection:	Kanamycin (25 ug/mL)
Cell Selection:	Neomycin



[View online »](#)

ORF Nucleotide Sequence:

>RR208000 representing NM_001106285
 Red=Cloning site Blue=ORF Green=Tags(s)

TTTTGTAATACGACTCACTATAGGGCGGCCGGGAATTCGTCGACTGGATCCGGTACCGAGGAGATCTGCC
 GCC**GCGATCGCC**

ATGAGGCGGCCCCAGGGGATGGAGACTCCACCGAGAAGGCCAGGAACTGGGGCTTATGGGAGCCC
 AGGAGTCCAGGAGGCTGTGCTGTGTTGGGCCAGACCGCTGTGGCAGGCACTACTGCAGATTGGAATGAA
 CATGATGGCACTACCTGGAGGCCGACCTGGTTCCATTCTCTGCAAGAGCAGAGGCTACACTTCATG
 CAGGTGGACTCGGTTACGCGCTGGATGGAGGATCTGAAGCTCATGACCGAGTGTGAGTGCATGTGCGTCT
 TGCAGGCAAAGCCATCAGCCTGGAGGAAGACACGCAGAGTGACCTTATCCTAGCAGGTGGTCTGGACC
 AGGAGATCCTCTGCAGCTGCTCCTGAAGCGGGCTGGTTCATCAGCACAGAGCTTCAAGGATCGGGCAG
 AAGCTGGCCCAGGACCGCTGGCACGCTGCACAGCATGAGTGTGCGTCTGACGTGCCATGCACGTTCCA
 TGGTACGCGAGTACAGCACCATCAGCAGGACAACCTCGCAGGAAATGGGCCAGGCAGAGAAGCTGCTCAT
 GGAGAAATGCTCCGAGCTCTCTCGGCTACTGAGAGTGCCTCCAAGTGGAAAATGAGCATGTTCTGAAG
 TCAATGAAGGCCCTGCGTGAGTGAGACCCCTGAGCATGTTGGGCCAGCACTTGGCCAGCTACTGGAAGTGG
 CCCTCACACGGGAAGTGCAGGCCTTGTGAGAAAAATCGATACCTCAGACAATATCTACATCACGGAATC
 TACCACAGGGAACCTTTCAGCCTGACCCAGGAGGGGGCTCCTTTGTGCCGCATCATAGCCAAGGAAGGT
 GGGGTTGTAGCCCTTCAAGGTCTGCCCGCAGGACACCTTCCGGTGTGTTGTACCCCCAGGCGCTCCGCA
 CACTGGCCTCTATCTGCTGTGTGAAGAGGGTGTCCATCAGCTGGAAAAGGTGGATGGTATCCTGTGCTT
 GACGGACATCTTGACTGATGATGCCACTCAGAGGCCACTCGAGCTGAGGCTGCAGCCGTTAGCCAG
 GTTACCTCTCCACATCTGTCTTTCACCCAGCACCCTACTAGCTTCTGGAGAACATGGAGGAGATTGTGA
 CAGCCCTAATCAAACCTGTGCCAAGAGCCTCATCAGGGGAAGTCTTCTGCTGGCTTCTCGGCCCTTGC
 CAATATCACCTTCTCGAAAAAATGGCCTGTGAGATGCTTCTGCAAGTGAATGCAATCCGTGTCCTTCTG
 GAAGCCTGTGGTGACAAACAGAGAGTAGACACACCTTATACTCGGGACCAGATTGTGACCATCTTGGCAA
 ACATGTCTGTGCTGGAGCAGTGTGCTCTGACATCATTGAGGAGAATGGTGTCCAGCTCATCATGGGCAT
 GCTGTCCGAGAAGCCAAGGTCTGGGACGCTGCTGAAGTGGCAGCCTGTGAGAGAGTACAGCAGAAAAGCT
 GCAGTGACCCCTGGCCCGCTCTGCCGAGACCCAGATGTGGCCCGGAGGCTGTGCGGCTCAGCTGTATGT
 CTCGCTGATTGAGCTCTGCAGATCCCCCTCTGAGAGGAACAGCAGCGATGCCGCTCTGGTAGCCTGCT
 GGCTGCCTTGCCTCGCTTGGCTGGGTCTGCCCGAAGGCCTTCCAGACTCTGACTTCCAGCAGCTGGTC
 CAGCCTCGGCTGTGGATTCTTCTTGTGTGTAGCAATATGGAGGAGATTTTGT

AG**CGGACCG**ACGCGTACGCGCCGCTCGAGCAGAACTCATCTCAGAAGAGGATCTGGCAGCAAATGATATCC
 TGGATTACAAGGATGACGACGATAAGGTTAA

Protein Sequence:

>RR208000 representing NM_001106285
 Red=Cloning site Green=Tags(s)

MRRPPGDGDSTGEGPNWGLWGAQESRRLCCVGPDRCGQALLQIGMNMALPGRHLSIPLQEQRHFH
 QVDSVQRWEDLKLMTCECMCVLQAKPISLEEDTQSDLILAGGPGPDPLQLLLKRGWVISTELRRIGQ
 KLAQDRWARVHSMVRLTCHARSMVSEYSTISRTTSQEMGQAEKLLMEKCELSAVTERCLQVENEHVLK
 SMKACVSETLSMLGQHFQQLLELALTRVQALVRKIDTSDNIYITESTTGNLFSLTQEGAPLCRIIAKEG
 GVVALFKVCRQDTRCLYPQALRTLASICVVEGVHQLKVDGILCLTDILDSSHSEATRAEAAVVAQ
 VTSPLHSFTQHLTSFLENMEEIVTALIKLCQEASSGEVFLASAALANITFFEKMACEMLLQLNAIRVLL
 EACGDKQRVDTPYTRDQIVTILANMSVLEQCASDI IQENGVQLIMGMLSEKPRSGTPEVAACERVQQA
 AVTLARLCRDPDVAREAVRLSCMSRLIELCRSPSERNSSDAVLVACLAALRRLAGVCPPEGLQDSDFQQLV
 QPRLVDSFLLCSNMEESFV

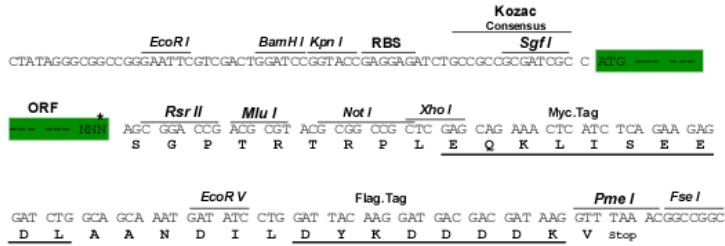
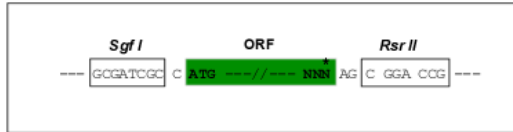
SGP**TRTRPLEQKLI**SEEDLAANDILDYKDDDDKV

Restriction Sites:

Sgfl-RsrII

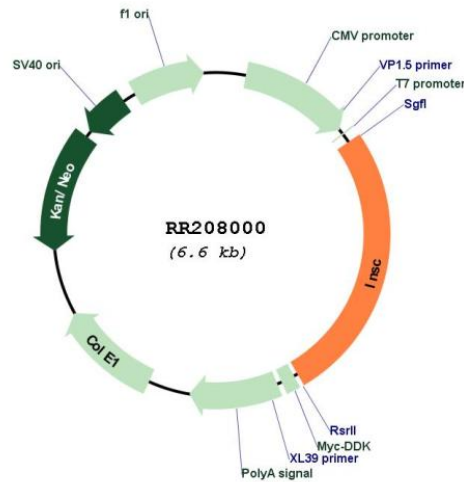
Cloning Scheme:

Cloning sites used for ORF Shuttling:



* The last codon before the Stop codon of the ORF

Plasmid Map:



ACCN: NM_001106285

ORF Size: 1737 bp

OTI Disclaimer:	The molecular sequence of this clone aligns with the gene accession number as a point of reference only. However, individual transcript sequences of the same gene can differ through naturally occurring variations (e.g. polymorphisms), each with its own valid existence. This clone is substantially in agreement with the reference, but a complete review of all prevailing variants is recommended prior to use. More info
OTI Annotation:	This clone was engineered to express the complete ORF with an expression tag. Expression varies depending on the nature of the gene.
Components:	The ORF clone is ion-exchange column purified and shipped in a 2D barcoded Matrix tube containing 10ug of transfection-ready, dried plasmid DNA (reconstitute with 100 ul of water).
Reconstitution Method:	<ol style="list-style-type: none">1. Centrifuge at 5,000xg for 5min.2. Carefully open the tube and add 100ul of sterile water to dissolve the DNA.3. Close the tube and incubate for 10 minutes at room temperature.4. Briefly vortex the tube and then do a quick spin (less than 5000xg) to concentrate the liquid at the bottom.5. Store the suspended plasmid at -20°C. The DNA is stable for at least one year from date of shipping when stored at -20°C.
RefSeq:	NM_001106285.1 , NP_001099755.1
RefSeq Size:	2341 bp
RefSeq ORF:	1740 bp
Locus ID:	293166
Cytogenetics:	1q35
MW:	63.8 kDa