

## Product datasheet for **RR207994**

### Nphp4 (NM\_001037650) Rat Tagged ORF Clone

#### Product data:

**Product Type:** Expression Plasmids  
**Product Name:** Nphp4 (NM\_001037650) Rat Tagged ORF Clone  
**Tag:** Myc-DDK  
**Symbol:** Nphp4  
**Synonyms:** MGC125230  
**Vector:** pCMV6-Entry (PS100001)  
**E. coli Selection:** Kanamycin (25 ug/mL)  
**Cell Selection:** Neomycin  
**ORF Nucleotide Sequence:** >RR207994 representing NM\_001037650  
 Red=Cloning site Blue=ORF Green=Tags(s)

TTTTGTAATACGACTCACTATAGGGCGCCGGGAATTCGTCGACTGGATCCGGTACCGAGGAGATCTGCC  
 GCC**CGATCGCC**

ATGGATGACTGGCACAGAGCCTTACCCAGAACACACTGGTCCCTCCCCACCCGAGAGAGCGGGCAGT  
 TTGGGAAGGAGTCCACGGCGTTCAGTGCATCCTGAAGTGGCTTGATGGGCCACTCATTAAAGCAGGGAAT  
 CCTAGACATGCTGTCTGAGCTTGAATGCCACCTGCGAGTGTCTCTTCGACGTACCTACAACATTTT  
 TTCGGGAGGACGTGAAAACACAGTGAAGCCACCAATCAGCTCTTAAGCAGCCACCCAGGATCTCT  
 TCAATGAGCCCTTGTACTTCCACACAACCTTGAGCCACCCAGCATCGTGGCTGTAAATAGAAGTGGTCGC  
 TGAAGGCAGGAAGAGGGACGGTGCCTGCAGGTGCTGTCTGTGGGTTTGGAAATCTTCGAATTTTTGGC  
 AATAAGCCGGAATCTCCACCTTCGAGGCCAGGACAAACGGTTGAGGCTGTATCATGGTACCCCCAGAG  
 CCCTTCTGCACCCACTTCTCCAGGATCCCATAGAACAGAACAGGTACATGACAATGATGGAAAATGTAG  
 CCTGCAGTATACCCTGAAGCCACACCCGCCCTGGAGCCCGCCTTCCACCTGCTCCCGAGAACTTCTGT  
 ATCTCCGGTCTCCAGCAGATCCCTGGCTCCTCCACCTCATGGAGACACGGGTGATGCCCTGAGGAAGC  
 CTCGCTTCCAGAAGCCACCACATTGCACCTAGATGACCTTTCTTACCCTGTACCCCTCCCTGGAGAA  
 GTTTGAGGAGGAACCTGTGCAGCTGCTCATCAGCGACCACTTCCGGGAGGGGTTGGCCTGCTAGATAGC  
 GGCACCCATAGAGGTCTTGAGCGCGCCTGCATGTCTGTGTCCACAACGGTCTGGGCTTCGTGCACAGGC  
 CACAGGTGGTGTGCTTGTACCTGAGATGGACATGACCTTGACGCGCTCGGCCAGCTTACGAGGAGAAT  
 CACTGCCTCTTCTAAGAGCAGCTCTGGAAATCAGGCTCTGGTTTTGAGAAGCCACCTGAGACTCCCGGAG  
 ATGGTCAATCACCCATCGTTTGGCATCGTCTTCCAGCTGGAGTACGTGTTCAACAGCCCTCAGGAGCGG  
 ACGGCAGTGCCAGCTCATCCACCTCTGTCCAGCTTGGCGTGCATGCACATGGTTTCGATGGGCTGTTT  
 GAACCCCGATCTGGAAGCAGGCCCGGAAAGGTGACGCTGCCTTTCAGGGTGGGTACAGCACAAACCC  
 TCACGATGTCTGGTCTATAAGGTGCCTTCGGCTAGCATGAGCTCTGAGGAGGTGAAGCAGGTGGAATCCG  
 GAACCATCCAGTTCCACTTCTCACTGAGCTCAGATGCCCTTACAGAGCATGCCAAGCCCGCCAGGGCAGG  
 GCGGCGCTCCACCAGAAAGGCACTAACGTCCTCCCTTCAGGCACACCAGCACTGGCAGCCCGGGATCTTGT  
 CGGATACAGGACTCTCTGTGGGCCAGGGCTCTCGCTCTCCAGCTGGCGGCTCCCCACAGTCTCTGG



[View online >](#)

CCTCACAAGATCTTTCAAGCCTCCTCCTCAGCCCTGGATGGCTCTCAGTCCCCAGAGGGTCCCCAGCT  
 CCAAGCAGGATCTGTATTAGAGAGCAGGATCTCTCATCTGGAAGCTGACCTGAGCCAGCCGCCCTTCTCG  
 GTGCAGGGGACGCCACTGTAGAACACCTACAGGAACTCCCTTCACTCCTTTGCATGCCCCATTGTGG  
 TGGGAGCCAGACCAGGAGCTCCAGAAGCCAGCTCTCCAGAGTGCCATGGTCTCTGCAGTCTTCCGG  
 CTTCCCTGAGATCCTTGATGCCAGGCAGCAGCCGGTGGAGGCCGTAATCCCATGGATCCTGTGAGGTT  
 AACCTCAGAAGGAGGAGTCAGACTGCCTTCTAGGGAATGAGATCGTGCAGTTTCTTGCCTTCAGCA  
 GAGCGGCCAGGACTGCCCGGGAGCGCTGGCCACAGACTGTGTATTTACCTTCCAGTTCTACCGTTT  
 CCCACCCGAGACCACGCCACGCCTGCAGCTGGTCAAACCTGGACAGGACAGGCAAGAACGGCTCTGCCTCC  
 CTGTCTACATCCTGGTCCACATCAATAAAGACGGCTCCTTTGACGCTGGCTCCCCTGGCTTCCAGCTGA  
 GGTACATGGTGGATCCCGGGTCTCTGAAGCCAGGAGAGCAGCGCTGGTTCGCCCAGTACCTGGCCGCTCA  
 GACGCTGCAAGTCGACGCTGGGATGGAGACTCCTTGCTCCTATTGGGTCTGCCGGCATCCAGATGAAG  
 CACCTCCTCCGCCAAGGGCGCCAGCTGTTCAGGTCTCACATGAACTGGAGGTCGTGGCCACTGAGTACG  
 AACAGGAAATGATGGTGGTGGAGCGGACGTGGCGGGCTTCGGCAGCGTCAAGCCATCGGAGTCCACAC  
 GGTCTGAAAGGGCCGGCTGCACCTGACCTTGGCCAACGTGGGTACAGAGTGTGAACCGAGAGCAAGAGT  
 TCCAACCGCTGCCACCATCCAGTCCCGGGTCACTCAATAATGGAGCCAGCTTCTTCTGCGGGAA  
 GCCTCCTCATACCAGGAGGCCCAAGCGAAAGCGTGTGGTTCAAGCCAGAAAGCTGGCTGATGTGGACAG  
 TGAGCTGGCCGCCATGCTGCTGACCCACACTCGAGCTGGCCAGGGGCCAGGCTGTGGGCCAGGAGGCA  
 GACGCTGTGCACAGGCGCAAGCTGGAAAGGATGCGGCTGGTGGCCTGCAGGAGGCCGGAGGGGACTCTG  
 ACAGTCGAGGATCAGCGTGTGGCCGACACAGTGTCCGTGCACAGCACTCACGGGACCTGCAGGTCAT  
 CGACGCTACCGGGAACGGACCAAGGCTGAGAATTGCCAGCGTGTGAGCCAGGCCATCACCACACAC  
 CACACTGTATGCCAGCTGGGCACGGCTGAGTTCTTCGAGTTGCACTTAAAAACCCACACAACACTC  
 AGCACAGGTGGCCATCGAGATTGACAGCCCTGAGCTCAGCATCATCCTGGACAGCCAGGAGTGGAGGTA  
 CTTCAAGGAGGCCACTGGCCTGCTCACACCCCTGGAGGAGGACATGTTCCACTGCGTGGGAGCCTGGCA  
 CCCAGCTCTACCTGCGGCCCGGGAGACTGCCACATCCCCTTCAAGTTCCAGAATTCTCTGTGGGCC  
 CACCTGCTCCGACACAGGCCCTGCGGAGGTGATCTCAGAGAAGGATGCAGAGTCTGGACCCATTGGAA  
 GTGAGTGCCATGCCTACCAAACACGCCAAGTCTTTTCCGGTGGAGACCGGCCAGCTCATTGCTGTG  
 CTCTGCCTGACCGTGGAGCCCCAGCCCCAGTGGTGGACCAGGTTTTCCGTTTCTACCACCAGAACTCA  
 CCTTCTGAAGAAGGCCATCCGCTGCCGCCCTGGCACACGTTCCAGGTGCTCCCGTGGGGATGCCTGG  
 CGAGGACCCCCAGTCCACGTTTCGATGCAGCGACCCGAATGTCATCTGCGAGGCCAGACGTGGGCCTT  
 GGTGAGCCGAGGGACGTGTTCTTAAGGTGGCCAGCGGTCAAGCCGGAGATCAAAGACTTCTTTGTGCG  
 TCATCTATGCGGATCGCTGGCTGGCGGTGCCCGTGCAGACATGGCAGGTCTGCCTCCACTCCCTGCAGCG  
 CGTGGATGTCTCCTGTGTGCGAGGGCAGATGACCCGTCTGTCCCTCGTCTACGGGGACGACAGCCGTT  
 AGGAAAGTGAGAGCTTTCACCTCCCACCCTCAGGAGCTGAAGACAGACCCCGCTGGTGTCTTTGTGTTAC  
 CACCTCACGGGGTGCAGGACCTGCATGTGGCGTGGAGCCAAGGAGGGCGGGCAGCCGTTCCATCCATCT  
 CAACCTGGTGGACGTCGACTACCACCAGCTGGTCCGCTCGTGGCTCGTGTGCCTGTCTGCCGCCAGCCC  
 CTCATTTCCAAGGCCTTCGAGATCACCATGGCAGCAGGCGAAGGGGAGGGTGCCAACAAGCGGATCACCT  
 ACACCAACCCCTACCTTCTCGGAGGACCTACCGTCTGCACAGTGACCGGCCAGACCTGCTGCATTTCAA  
 GGAGGACTCCTTCCAGGTGGCCGGAGGGGAGACCTACACCATCGGGCTGCGGTTCTTCCGAGTGGCAGC  
 GCCGGGACAGGAGATCCTGATCTACATCAATGACCAGGACGACAAGAATGAAGAGACATTCTGTGTGA  
 AGTCTCTACCAAG

ACGCGTACGCGGCCGCTCGAGCAGAACTCATCTCAGAAGAGGATCTGGCAGCAATGATATCCTGGATT  
 ACAAGGATGACGACGATAAGGTTTAA

**Protein Sequence:** >RR207994 representing NM\_001037650  
 Red=Cloning site Green=Tags(s)

MDDWHRAFTQNTLVPPHPQRRARQFGKESTAFQCILKWLGDGPLIKQGI LDMLSELECHLRVSLFDVTYKHF  
 FGRTWKTTVKPTNQLSKQPPRILFNEPL YFHSTLSHPSIVAVIEVVAEGRKR DGALQVLSGFGILRIFG  
 NKPE SPTSAGQDKRLRL YHGT PRALLHPLLQDPIEQNRYMTMMENCSLQYTLKPHPPLEPAFHLLPENFL  
 ISGLQQIPGLLPPHGD TDALRKRPRFQKPTTLHLDDLFF TLYPSLEKFEELVQLLISDHFREGVGLLDS  
 GTLEVLERRLHVCVHNGLGFVHRPQVVVLPEDMTLRSASFRRITASSKSSSGNQALVLRSHLRLPE  
 MVNHP SFAIVFQLEYVFNPSGADGSASSSTLSSLACMHMVRWAVWNP DLEAGPKVTLPLQGGVQHNP  
 SRCLVYKVP SAMSSEEVKQVESGTIQHFSLSSDALTEHANGPRAGRRSTRKAL TSPSGTPALAARDLA  
 AIQD SPVGPGLSLSQLAASPQSLASQSFKPPPQPLDGSQSPEGPQLQAGSVLESRI SHLEADLSQPPFS  
 VQGTP TVEHLQELPFTPLHAPIVVG AQTRSSRSQLSRAAMVLLQSSGFPEILDARQPVAVNPMDPVRF  
 NPQKEESDCLL GNEIVLQFLAFSRAAQDCPGAPWPQTVYFTFQFYRFPETT PRLQLVKLDRTGKNGSAS  
 LSHILVHINKDGSFDAGSPGFQLRYMVDPGFLKPGEQRFWAQYLA AQTQVDVWDGSDLLIGSAGIQMK  
 HLLRQGRPAVQVSHELEV VATEYEQEMMVVSGDVAGFGSVKPIGVHTVVKGRHLHLT LANVGHECEPRARG  
 SNALPPSRSRVISNNGASFFSGG SLLIPGGPKRRVVAQKLADVDS ELAAMLLTHTRAGQGPQAVGQEA  
 DAVHRRKLERMRLVRLQEAGGSDSRRISVLARHSVRAQHSRDLQVIDAYRE RTKAENIASVLSQAITTH  
 HTLYATLGTAEFFEFALKNPHTQHTVAIEID SPELSIILDSQEWRYFKEATGLLTPLEEDMFHLRGLA  
 PQLYL RPETAHIPFKFQNF SVGPPAPTQAPAEVISEKDAESGPHWKCSAMPTKHAKV LFRVETGQLIAV  
 LCLTVEPQPHVVDQVFRFYHPEL TFLKKAIRLPPWHTLP GAPVGMGPEGDPVHVRCSDPNV ICEAQNVGL  
 GEPRD VFLKVASGSPSEIKDFVVIYADRWLAVPVQTWQVCLHSLQRVDVSCVAGQMTRLSLVLRG TQTV  
 RKVRAFTSHPQELKTDPA GVFVLP PHGVQDLHVGVRPRRAGSRF IHLNLVDVDYHQLVASWL VCLSCRQP  
 LISKAF EITMAAGEGKGANKRITYTNPYPSRRTYRLHSDRPDL LHFKEDSFQVAGGETYTI GLRFLPSGS  
 AGQEEIL IYINDQDDKNEETFCVKVLYQ

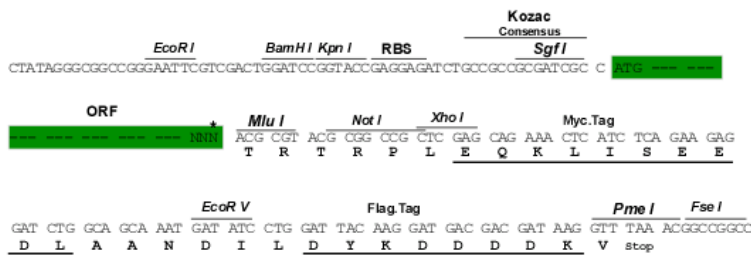
TRTRPLEQKLISEEDLAANDILDYKDDDDKV

**Restriction Sites:**

Sgfl-MluI

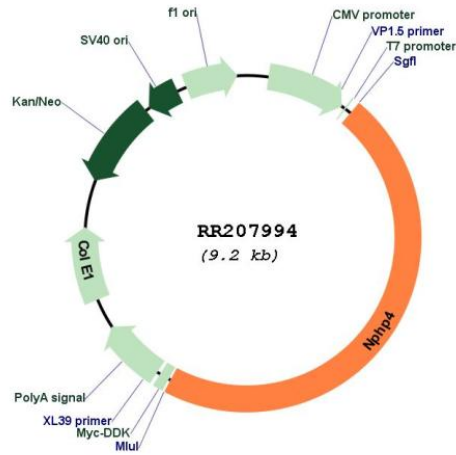
**Cloning Scheme:**

Cloning sites used for ORF Shuttling:



\* The last codon before the Stop codon of the ORF

Plasmid Map:



ACCN: NM\_001037650

ORF Size: 4284 bp

OTI Disclaimer: The molecular sequence of this clone aligns with the gene accession number as a point of reference only. However, individual transcript sequences of the same gene can differ through naturally occurring variations (e.g. polymorphisms), each with its own valid existence. This clone is substantially in agreement with the reference, but a complete review of all prevailing variants is recommended prior to use. [More info](#)

OTI Annotation: This clone was engineered to express the complete ORF with an expression tag. Expression varies depending on the nature of the gene.

Components: The ORF clone is ion-exchange column purified and shipped in a 2D barcoded Matrix tube containing 10ug of transfection-ready, dried plasmid DNA (reconstitute with 100 ul of water).

**Reconstitution Method:**

1. Centrifuge at 5,000xg for 5min.
2. Carefully open the tube and add 100ul of sterile water to dissolve the DNA.
3. Close the tube and incubate for 10 minutes at room temperature.
4. Briefly vortex the tube and then do a quick spin (less than 5000xg) to concentrate the liquid at the bottom.
5. Store the suspended plasmid at -20°C. The DNA is stable for at least one year from date of shipping when stored at -20°C.

**RefSeq:** [NM\\_001037650.2](#), [NP\\_001032739.2](#)

**RefSeq Size:** 5037 bp

**RefSeq ORF:** 4287 bp

**Locus ID:** 313749

**Cytogenetics:** 5q36

**MW:** 158.2 kDa