

Product datasheet for **RR207951**

Tpra1 (NM_053534) Rat Tagged ORF Clone

Product data:

Product Type: Expression Plasmids
 Product Name: Tpra1 (NM_053534) Rat Tagged ORF Clone
 Tag: Myc-DDK
 Symbol: Tpra1
 Synonyms: Gpr175; Tpra40
 Vector: pCMV6-Entry (PS100001)
 E. coli Selection: Kanamycin (25 ug/mL)
 Cell Selection: Neomycin
 ORF Nucleotide Sequence: >RR207951 representing NM_053534
 Red=Cloning site Blue=ORF Green=Tags(s)

TTTTGTAATACGACTCACTATAGGGCGGCCGGAATTCGTCGACTGGATCCGGTACCGAGGAGATCTGCC
 GCC**GCGATCGCC**

ATGGCCAACCTGCAGGAGGCCAATGGAAGCACAGCGTGGCCACCGCCCCAGCATCCAATATCAGTGAGC
 CCCACCAATGCCTGCTGTGTATGAGGATATCGGCTCCTCCAGGGTCCGGTACTGGACCTCCTGCT
 GCTCATTCCCAATGTGCTCTTCTCATCTTCTGCTCTGGAAGCTCCCTTAGCTCGGGCAAGATCCGT
 GTCACCTCCAGCCCCATTTTTATTACCTTCTACATCTTGGTGTTTGTGGTAGCCCTGGTTGGCATTGCCA
 GGGCTGTGGTTTCTATGACAGTCAGTGCCTCTGATGCTGCGACAGTTGCTGATAAGATCCTGTGGGAGAT
 CACCCGCTTCTTCTGCTGGCATTGAGCTGAGTGTGGTTCATCCTGGCCTTGCCTTTGGTACCTAGAG
 AGCAAGTCCAGCATCAAGCGGGTACTGGCTATCACCACAGTACTGTCTGGCCTACTCAGTACCCAGG
 GGACTCTGGAGATCCTGTACCCTGACTCCCATCTGTCAGCTGAGGATTTCAACATCTATGGCCATGGTGG
 CCGCCAGTTCTGGCTTGTGAGCTCTTCTTTCTTTTCTGGTCTACTCACTGGTGGTAATTCTCCCCAAG
 ACCCCGCTGAAGGATCGTGTATCCCTGCCCTCACGGAGGAGTTTCTACGTGTATGCAGGCATCCTGGCCA
 CACTTAACCTACTGCAGGGTTTGGGGAGTCTGCTCTGCGTGACATCACTGAGGGGCTCTGCTGTGT
 GGACGCCACCACCTTCTGTACTTCAGCTTCTTTGCGCCCTCATCTATGTGGCCTTCTCCGTGGCTTC
 TTCGGCTCAGAGCCCAAGATCCTTTTCTTTACAATGCCAAGTGGATGAGGCAGAGGAGCCAGACATGC
 ACCTGCCACAACCCTACGCCGTGGCCCGCGGAGGGCATCGAGTCCGCAGGACCCTCGGGAGTCTCAGC
 AGCCAATACTCCAGCACGAGTTCGACTCTGCTGGGGTGGCCTACTTAGATGACATTGCCTCCATGCC
 TGCCACACGGGCAGCATCAACAGCACAGACAGTGAAGCTTGGAAAGCTATCAATGCC

ACGCGTACGCGGCCGCTCGAGCAGAACTCATCTCAGAAGAGGATCTGGCAGCAATGATATCCTGGATT
 ACAAGGATGACGACGATAAGGTTTAA



[View online »](#)

Protein Sequence: >RR207951 representing NM_053534
Red=Cloning site Green=Tags(s)

MANLQEANGSTAWPPPPASNISEPHQCLLLL YEDIGSSRVRYWDL LLLIPNVLFFIFLLWKLPLARAKIR
 VTSSPIFITFYILVFVVALVGIARAVVSM TVSASDAATVADKILWEITRFLLAIELSVVILGLAFGHLE
 SKSSIKRVLAITTVLSLAYSVTQGTLEILY PDSHL SAEDFNIYGHGGRQFWLVSSCFFFLVYSLVILPK
 TPLKDRVSLPSSRSFYVYAGILATLNL LQGLGSALLCADITEGLCCVDATTFLYFSFFAPLIYVAFLRGF
 FGSEPKILFSYKQVDEAE EPMHLPQPYAVARREGIESAGPSG VSAANYSSTQFDSAGVAYLDDIASMP
 CHTGSINSTDSERWKAINA

TRTRPLEQKLISEEDLAANDILDYKDDDDKV

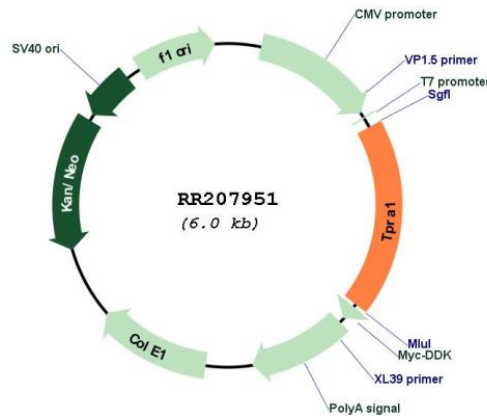
Restriction Sites:

SgfI-MluI

Cloning Scheme:



Plasmid Map:



ACCN:

NM_053534

ORF Size:	1107 bp
OTI Disclaimer:	<p>Due to the inherent nature of this plasmid, standard methods to replicate additional amounts of DNA in E. coli are highly likely to result in mutations and/or rearrangements. Therefore, OriGene does not guarantee the capability to replicate this plasmid DNA. Additional amounts of DNA can be purchased from OriGene with batch-specific, full-sequence verification at a reduced cost. Please contact our customer care team at custsupport@origene.com or by calling 301.340.3188 option 3 for pricing and delivery.</p> <p>The molecular sequence of this clone aligns with the gene accession number as a point of reference only. However, individual transcript sequences of the same gene can differ through naturally occurring variations (e.g. polymorphisms), each with its own valid existence. This clone is substantially in agreement with the reference, but a complete review of all prevailing variants is recommended prior to use. More info</p>
OTI Annotation:	This clone was engineered to express the complete ORF with an expression tag. Expression varies depending on the nature of the gene.
Components:	The ORF clone is ion-exchange column purified and shipped in a 2D barcoded Matrix tube containing 10ug of transfection-ready, dried plasmid DNA (reconstitute with 100 ul of water).
Reconstitution Method:	<ol style="list-style-type: none"> 1. Centrifuge at 5,000xg for 5min. 2. Carefully open the tube and add 100ul of sterile water to dissolve the DNA. 3. Close the tube and incubate for 10 minutes at room temperature. 4. Briefly vortex the tube and then do a quick spin (less than 5000xg) to concentrate the liquid at the bottom. 5. Store the suspended plasmid at -20°C. The DNA is stable for at least one year from date of shipping when stored at -20°C.
RefSeq:	NM_053534.2 , NP_445986.2
RefSeq Size:	1627 bp
RefSeq ORF:	1110 bp
Locus ID:	85494
Cytogenetics:	4q34
MW:	40.6 kDa
Gene Summary:	an orphan receptor; expression is downregulated by ischemic hypoxia and reoxygenation [RGD, Feb 2006]