

Product datasheet for **RR207938**

Dusp26 (NM_001012352) Rat Tagged ORF Clone

Product data:

Product Type: Expression Plasmids
Product Name: Dusp26 (NM_001012352) Rat Tagged ORF Clone
Tag: Myc-DDK
Symbol: Dusp26
Synonyms: RGD1310090
Vector: pCMV6-Entry (PS100001)
E. coli Selection: Kanamycin (25 ug/mL)
Cell Selection: Neomycin
ORF Nucleotide Sequence: >RR207938 representing NM_001012352
Red=Cloning site Blue=ORF Green=Tags(s)

TTTTGTAATACGACTCACTATAGGGCGGCCGGAATTCGTCGACTGGATCCGGTACCGAGGAGATCTGCC
GCC**CGATCGCC**

ATGTGCCCGGTAACGGCTGTGGGCTTCCATGACTTTTATGGCCCGCTTCTCCGAAGCAGCTCAAGGT
CCCCTGTTGACCCGAGGGAGCCTGGAGGAGATGCCAGTGTTACCATCCCTTCTCAATGTCTTTGA
GTTGGAAAGGCTCCTCTACACGGCAAGACAGCCTGCAACCATGCTGACGAGGCTGGCCAGGCCTCTAC
CTCGGAGACCAGGACATGGCCAACAACCGCCGTGAGCTTCGTCGCCTGGGCATCACCCACGTCCTCAACG
CCTCCACAGCAGGTGGCGAGGCACCCCGAGGCCACGAGGGACTGGGCATCCGCTACCTGGGTGTTGA
AGCCCACGACTCGCCAGCCTTTGACATGAGCGTCCACTTTCAAACCGCTGCGGACTTTATCCATCGGGCA
CTGAGCCAGCCAGGAGGGAAGATCCTGGTGCACTGTGCGGTGGGAGTGAGCAGATCTGCCACCCTGGTGC
TGGCCTACCTCATGCTGTACCACCACTTACCCTCGTGGAGGCCATCAAGAAAGTCAAGGACCACCGAGG
CATCATCCCCAACAGGGGCTTCTTGAGACAGCTCCTAGCCCTGGACCGTAGGCTGCGTCAGGGTCTAGAA
GCA

ACGCGTACGCGGCCGCTCGAGCAGAAACTCATCTCAGAAGAGGATCTGGCAGCAAATGATATCCTGGATT
ACAAGGATGACGACGATAAGGTTTAA



[View online »](#)

Protein Sequence: >RR207938 representing NM_001012352
 Red=Cloning site Green=Tags(s)

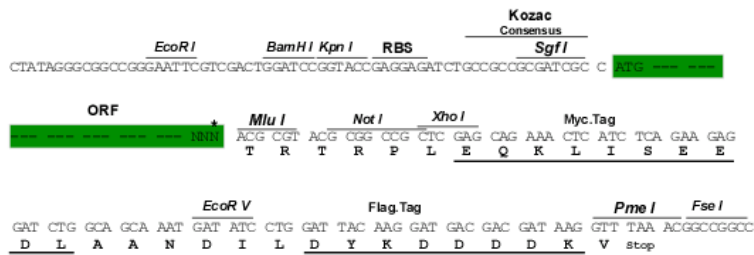
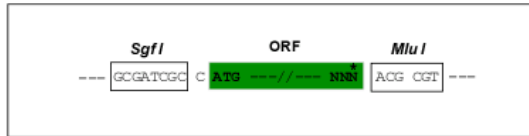
MCPGNLWASMTFMARFSRSSSRSPVTRGRSLEEMPSVHHPFLNVFELERLLYTGKTACNHADEVWPLY
 LGDQDMANNRRELRLRGITHVLNASHSRWRGTPEAYEGLGIRYLGVEAHDSPAFDMSVHFQTAADF IHRA
 LSQPGGKILVHCAVGVSRSATLVLAYLMLYHHFTLVEAIKKVKDHRGIIPNRGFLRQLLALDRRLRQGLE
 A

TRTRPLEQKLISEEDLAANDILDYKDDDDKV

Restriction Sites: Sgfl-MluI

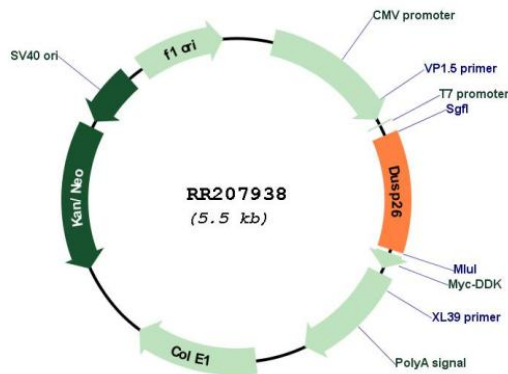
Cloning Scheme:

Cloning sites used for ORF Shuttling:



* The last codon before the Stop codon of the ORF

Plasmid Map:



ACCN: NM_001012352

ORF Size: 633 bp

OTI Disclaimer:	The molecular sequence of this clone aligns with the gene accession number as a point of reference only. However, individual transcript sequences of the same gene can differ through naturally occurring variations (e.g. polymorphisms), each with its own valid existence. This clone is substantially in agreement with the reference, but a complete review of all prevailing variants is recommended prior to use. More info
OTI Annotation:	This clone was engineered to express the complete ORF with an expression tag. Expression varies depending on the nature of the gene.
Components:	The ORF clone is ion-exchange column purified and shipped in a 2D barcoded Matrix tube containing 10ug of transfection-ready, dried plasmid DNA (reconstitute with 100 ul of water).
Reconstitution Method:	<ol style="list-style-type: none">1. Centrifuge at 5,000xg for 5min.2. Carefully open the tube and add 100ul of sterile water to dissolve the DNA.3. Close the tube and incubate for 10 minutes at room temperature.4. Briefly vortex the tube and then do a quick spin (less than 5000xg) to concentrate the liquid at the bottom.5. Store the suspended plasmid at -20°C. The DNA is stable for at least one year from date of shipping when stored at -20°C.
RefSeq:	NM_001012352.1 , NP_001012352.1
RefSeq Size:	1630 bp
RefSeq ORF:	636 bp
Locus ID:	306527
UniProt ID:	Q5FVI9
Cytogenetics:	16q12.3
MW:	23.9 kDa
Gene Summary:	Inactivates MAPK1 and MAPK3 which leads to dephosphorylation of heat shock factor protein 4 and a reduction in its DNA-binding activity.[UniProtKB/Swiss-Prot Function]