

Product datasheet for **RR207908**

Actbl2 (NM_001106409) Rat Tagged ORF Clone

Product data:

Product Type:	Expression Plasmids
Product Name:	Actbl2 (NM_001106409) Rat Tagged ORF Clone
Tag:	Myc-DDK
Symbol:	Actbl2
Synonyms:	RGD1309504
Mammalian Cell Selection:	Neomycin
Vector:	pCMV6-Entry (PS100001)
E. coli Selection:	Kanamycin (25 ug/mL)
ORF Nucleotide Sequence:	>RR207908 representing NM_001106409 Red=Cloning site Blue=ORF Green=Tags(s)

TTTTGTAATACGACTCACTATAGGGCGGCCGGAATTCGTCGACTGGATCCGGTACCGAGGAGATCTGCC
GCC**CGATCGCC**

ATGGTTGATGATGAGCTGGGTGCCTTGGTAGTAGATAATGGGTCAGGGATGTGCAAGCGGGTTTTGGGG
GTGATGACGCCCCCGTGTGTTCCTCCATGGTAGGGCGTCCACGACACCAAGGGTTCATGGTGGG
CATGGGCCAGAAGGACTGTTATGTGGGAGATGAGGCCAGAGCAAGAGAGGCATCTTGACCTGAAGTAT
CCCATTGAACATGGAGTCGTACCAACTGGGATGACATGGAGAAGATCTGGTACCACACTTCTACAATG
AGTCCGTGTAGCACCGGATGAGCATCCTATTCTCTCACGAGGCACCCCTCAACCCAAAATCAACCG
GGAGAAGATGACTCAGATAATGTTTGAGGCTTCAACACACCTGCCATGTATGTAGCTATCCAAGCCGTA
CTGTCCCTCTATGCCTCGGAAGGACGACAGGTAACGTGATGGATTCTGGGGATGGCGTCACTCACACTG
TGCCATCTATGAAGGCTATGCTCTGCCCATGGCATTCTACGACTAGATCTGGCAGGCAGAGACCTGAC
TGATTACCTCATGAAGATCCTGACAGAACGAGGTTATAACTTCACCACCACAGCTGAGAGGGAGATCGTG
CGGGATGTCAAAGAAAAGCTGTGCTATGTGGCCCTGGACTTTGAGCAGGAGATGGTCACTGCAGCTGCTT
CATCCTCACTTGAAGAAGCTATGAGCTCCCTGATGGGCAGGTGATCACCATTGGGAACGAAACGTTTTTCG
ATGCCCAGAAGCCATTTCCAGCCTTCTTTCTAGGTATTGAATCCAGAGGGATCCATGAGACAACCTTC
AACTCCATCATGAAGTGTGATGTGGATATTCGCAAGGATTTATATGCCAACACTGTGCTGTGGAGGCA
GCACCATGTACCCGGGCATTGCCGACAGGATGCAGAAGGAAATCGTAACCTTGGCACCAAGCACCATGAA
AATTAAGATCATAGCTCCCCAGAACGCAAGTATTCAGTTTGATTGGGGCTCCATCCTCGCCAGCCTA
TCCACATTCCAGCAGATGTGGATCAGTAAGCAGGAGTACGATGAAGCCGGTCTCTATAGTTCATAGAA
AATGCTTC

ACGCGTACGCGGCCGCTCGAGCAGAACTCATCTCAGAAGAGGATCTGGCAGCAATGATATCCTGGATT
ACAAGGATGACGACGATAAGGTTTAA



[View online »](#)

Protein Sequence: >RR207908 representing NM_001106409
 Red=Cloning site Green=Tags(s)

MVDELGALVVDNGSGMCKAGFGGDDAPRAVFPMSVGRPRHQVMVGMGQKDCYVGDEAQS~~SRGILTLKY~~
 PIEHGVVTNWDDMEKIWHYHTFYNELRVAPDEHPILLTEAPLNPKINREKMTQIMFEAFNTPAMYVAIQAV
 LSLYASGRRTGNVMDSGDGVTHTVPIYEGYALPHGILRLDLAGRDLTDYLMKILTERGYNF~~TTAEREIV~~
 RDVKEKLCYVALDFEQEMVTAASSSLERSYELPDGQVITIGNERFRCPEAIFQPSFLGIESRGIHETTF
 NSIMKCDVDIRKDLAYNTVLSGGSTMYPGIADRMQKEIVTLAPSTMKIKIIAPPERKYSVWIGGSILASL
 STFQQMWISKQEYDEAGPPIVHRKCF

TRTRPLEQKLISEEDLAANDILDYKDDDDKV

Restriction Sites:

Sgfl-MluI

Cloning Scheme:

Cloning sites used for ORF Shuttling:



* The last codon before the Stop codon of the ORF

ACCN: NM_001106409

ORF Size: 1128 bp

OTI Disclaimer: Due to the inherent nature of this plasmid, standard methods to replicate additional amounts of DNA in E. coli are highly likely to result in mutations and/or rearrangements. Therefore, OriGene does not guarantee the capability to replicate this plasmid DNA. Additional amounts of DNA can be purchased from OriGene with batch-specific, full-sequence verification at a reduced cost. Please contact our customer care team at custsupport@origene.com or by calling 301.340.3188 option 3 for pricing and delivery.

The molecular sequence of this clone aligns with the gene accession number as a point of reference only. However, individual transcript sequences of the same gene can differ through naturally occurring variations (e.g. polymorphisms), each with its own valid existence. This clone is substantially in agreement with the reference, but a complete review of all prevailing variants is recommended prior to use. [More info](#)

OTI Annotation: This clone was engineered to express the complete ORF with an expression tag. Expression varies depending on the nature of the gene.

Components: The ORF clone is ion-exchange column purified and shipped in a 2D barcoded Matrix tube containing 10ug of transfection-ready, dried plasmid DNA (reconstitute with 100 ul of water).

Reconstitution Method:

1. Centrifuge at 5,000xg for 5min.
2. Carefully open the tube and add 100ul of sterile water to dissolve the DNA.
3. Close the tube and incubate for 10 minutes at room temperature.
4. Briefly vortex the tube and then do a quick spin (less than 5000xg) to concentrate the liquid at the bottom.
5. Store the suspended plasmid at -20°C. The DNA is stable for at least one year from date of shipping when stored at -20°C.

RefSeq: NM_001106409.1, NP_001099879.1

RefSeq Size: 2748 bp

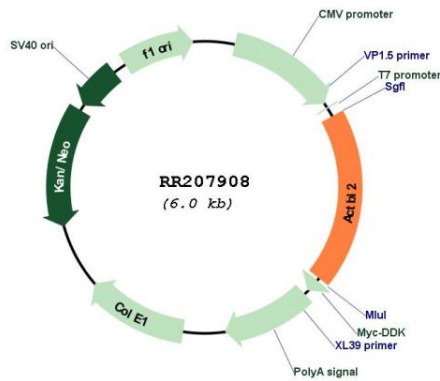
RefSeq ORF: 1131 bp

Locus ID: 294732

Cytogenetics: 2q14

MW: 42 kDa

Product images:



Circular map for RR207908