

## Product datasheet for **RR207907**

### **Xrn2 (NM\_001108596) Rat Tagged ORF Clone**

#### **Product data:**

Product Type:	Expression Plasmids
Product Name:	Xrn2 (NM_001108596) Rat Tagged ORF Clone
Tag:	Myc-DDK
Symbol:	Xrn2
Vector:	pCMV6-Entry (PS100001)
E. coli Selection:	Kanamycin (25 ug/mL)
Cell Selection:	Neomycin



[View online »](#)

**ORF Nucleotide Sequence:**

>RR207907 representing NM\_001108596  
 Red=Cloning site Blue=ORF Green=Tags(s)

TTTTGTAATACGACTCACTATAGGGCGGCCGGAATTCGTCGACTGGATCCGGTACCGAGGAGATCTGCC  
 GCC**CGGATCGCC**

ATGATCATGTTAGCAGTTGGTGAAGTTGAGGATAGCATTTTTAAAAAGAGAAAAGATGATGAGGACAGTT  
 TTAGAAGACGACAGAAAAGAAAAAGAAAGAGGATGAAGAGAGATCAACCAGCTTTTACTCCTAGTGGAA  
 ATTAACACCTTACGCTTTGGGTTCAAGAAATTCTCCAGTTGTCAAGTAGCCAGTAAATCCAAGACAAGCC  
 GCCTATGAAATGAGGATGCAGAGTAACTCTAGTCTTCAATATCCCTAATACAAGTTTTGCATCTGATG  
 GCTCCCATCTCCACTAGGAGGACTTAAGAGAAAAGCAGAAGATAGTGATAGTGAGCCAGAGCCAGAGGA  
 TAACGTCAGGTTATGGGAAGCTGGTTGGAAGCAGCGATACTACAAGAACAATTTGATGTAGATGCAGCT  
 GATGAGAAATCCGACGTAAGGTTGTTCCAGTCTTATGTTGAAGGATTGTGCTGGGTTCTTCGATATTATT  
 ACCAGGGCTGTGCTTCTGGAAGTGGTATTACCCATTCCATTATGCGCCGTTTGCCTCAGACTTTGAAGG  
 TATTGCAGACATGCCTTCTGAATTTGAAAAGGGCACAAAACCGTTTAAACCACTGGAACAGCTAATGGGG  
 GTTTTTCCAGCTGCAAGTGGTAACCTTTTACCTCCAACATGGCGGAAGCTCATGAGTGACCTGATTCTA  
 GTATAATTGACTTCTATCCTGAAGACTTTGCTATTGATTTGAATGGGAAGAAGTATGCATGGCAAGGTG  
 TGCTCTGTTGCCATTTGTGGATGAGCGAAGGCTGCGAGCGGCCCTAGAAGAGGTGTACCCAGACCTCACT  
 CCAGAAGAGAACAGGAGAAAATAGTCTTGGAAAGTATGTTTTGTTGTGGGAAAAGTTCATCCACTACAG  
 ACTTCATTTTAGAGCTGTATCAGACAGGTTCTACAGAGCCAGTAGATGTGCCGCTGAGTTGTGTACGG  
 GATTCAGGGAAGTTTTCTTTGGATGAAGAAGCCATACTCCAGACCAACAGTATGTTCCCTGTGCC  
 ATGTTACGGGACTTGACACAGAACACTGCAATCAGTATTAATTTTAAAGATCCACAGTTTTCGGAAGATT  
 ATGTTTTTAAAGCTATAATGCTTCCAGGAGCAAGAAAGCCAGCAGCAGTCTGAAACCCGGAGACTGGGA  
 AAAATCCAGCAATGGGCGCAATGGAAACCCAGCTTGGCTTTAAACCGGACCGCGGCCTGTTACCTG  
 GACCAGGCAGCCTTAGAACTTTAGCCATGTTATACCAAGAGGCTCAGGGACTGGTGTTCACGCAACA  
 CTGCAACCCACCTGCCAATTACCAGGGGAACGTATACAGGCCACTGCTGAGAGGTCAAGCTCAGATCCC  
 AAACTAATGTCAAATATGAGGCCCAAGATAACTGGCGAGGCTCCTCCTCTTTTCCAGCAGCAGAGA  
 TTTGACAGAAGTGTGGAGCTGAACCCCTACTGCCGTGGAACCGAATGCTCCAAACCCAAAATGCAGCCT  
 TTCAGCCAAATCAGTACCAGATGCTGGCTGGGCCGGAGGATATCCACCCAGACGTGATGACCATCGAGG  
 AGGGCGACAGGGATATCCAGAGAAGGAAGGAAGTACCCTTGGCACCGCCCTCGGAAGATACAGTTGG  
 AAT

**ACGCGT**ACGCGGCCGCTCGAGCAGAAACTCATCTCAGAAGAGGATCTGGCAGCAAATGATATCCTGGATT  
 ACAAGGATGACGACGATAAGGTTTAA

**Protein Sequence:**

>RR207907 representing NM\_001108596  
 Red=Cloning site Green=Tags(s)

MIMLAVGEVEDSIFKRRKDEDESFRRRQKEKRKRMRDQPAFTPSGILTPYALGSRNSPGCQVASNPRQA  
 AYEMRQSNSSPISPNSTSFASDGSPSPLGGLKRKAEDSDSEPEPEDNVRLWEAGWKQRYKKNKFDVDA  
 DEKFRRVVQSYVEGLCWVLRYYYQGCASWKWYYPFHYAPFASDFEGIADMPSEFEKGTKPFKPLEQLMG  
 VFPAASGNFLPPTWRKLMSPDSSIIDFYPEDFAIDLNGKKYAWQGVALLPFVDERRLRAALEEVYDPLT  
 PEENRRNSLGSDFLVGKVVHPLHDFILELYQTGSTPEVDVPELCHGIQKFSLDEEAILPDQTVCSVPV  
 MLRDLTQNTAISINFKDPQFAEDYVFKAIMLPGARKPAAVLKPGEWKSNGRQWPKQLGFNRDRPVHL  
 DQAAFRTLGHVIPRSGTGVYSNTAPPPANYQGNVYRPLLRGQAQIPKLSNMRPQDNWRGPPPLFQQQR  
 FDRSVGAEP LLPWNRMLQTQNAAFQPNQYQMLAGPGGYPPRRDDHRGGRQGYPREGRKYLPPLPPSGRYSW  
 N

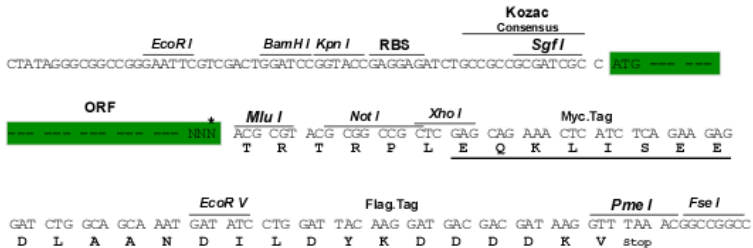
**TRTRPLEQKLI**SEEDLAANDILDYKDDDDKV

**Restriction Sites:**

Sgfl-MluI

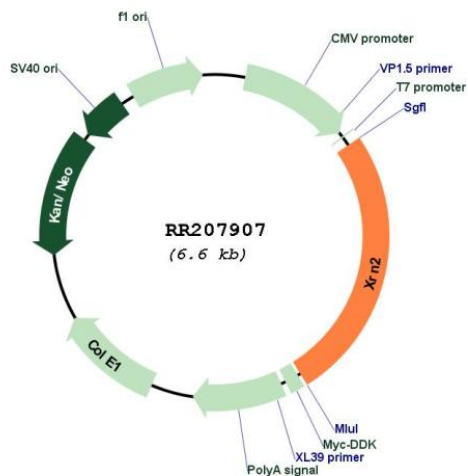
**Cloning Scheme:**

Cloning sites used for ORF Shutting:



\* The last codon before the Stop codon of the ORF

**Plasmid Map:**



ACCN: NM\_001108596

<b>ORF Size:</b>	1683 bp
<b>OTI Disclaimer:</b>	The molecular sequence of this clone aligns with the gene accession number as a point of reference only. However, individual transcript sequences of the same gene can differ through naturally occurring variations (e.g. polymorphisms), each with its own valid existence. This clone is substantially in agreement with the reference, but a complete review of all prevailing variants is recommended prior to use. <a href="#">More info</a>
<b>OTI Annotation:</b>	This clone was engineered to express the complete ORF with an expression tag. Expression varies depending on the nature of the gene.
<b>Components:</b>	The ORF clone is ion-exchange column purified and shipped in a 2D barcoded Matrix tube containing 10ug of transfection-ready, dried plasmid DNA (reconstitute with 100 ul of water).
<b>Reconstitution Method:</b>	<ol style="list-style-type: none"><li>1. Centrifuge at 5,000xg for 5min.</li><li>2. Carefully open the tube and add 100ul of sterile water to dissolve the DNA.</li><li>3. Close the tube and incubate for 10 minutes at room temperature.</li><li>4. Briefly vortex the tube and then do a quick spin (less than 5000xg) to concentrate the liquid at the bottom.</li><li>5. Store the suspended plasmid at -20°C. The DNA is stable for at least one year from date of shipping when stored at -20°C.</li></ol>
<b>RefSeq:</b>	<a href="#">NM_001108596.1</a> , <a href="#">NP_001102066.1</a>
<b>RefSeq Size:</b>	3787 bp
<b>RefSeq ORF:</b>	1686 bp
<b>Locus ID:</b>	362229
<b>Cytogenetics:</b>	3q41
<b>MW:</b>	63.9 kDa