

## Product datasheet for **RR207838**

### Adck5 (NM\_001135798) Rat Tagged ORF Clone

#### Product data:

Product Type:	Expression Plasmids
Product Name:	Adck5 (NM_001135798) Rat Tagged ORF Clone
Tag:	Myc-DDK
Symbol:	Adck5
Synonyms:	MGC112651; MGC188570
Mammalian Cell Selection:	Neomycin
Vector:	pCMV6-Entry (PS100001)
E. coli Selection:	Kanamycin (25 ug/mL)



[View online »](#)

**ORF Nucleotide Sequence:**

>RR207838 representing NM\_001135798  
 Red=Cloning site Blue=ORF Green=Tags(s)

TTTTGTAATACGACTCACTATAGGGCGGCCGGAATTCGTCGACTGGATCCGGTACCGAGGAGATCTGCC  
 GCC**CGCATCGCC**

ATGTGGCGGCCGATGCGACTGTGCCACTTCCACTCTACTCTGCTGCAGAGCAGGCAGAAGCCTGGCCGT  
 GCCTGCCATATTCTTCAGGAGAACTTCAAGAGCCCACTGGCAAGGACCTCAAGGACCAGGCTGCTGTG  
 GAGGAGGACATTCTGCCACTGTGGTGGGCACGCCCTTCTCTTTGGAGCCATTATTTTCATGGCAGAG  
 TCATCGGAGAGGAGGAAGCTGCGACTGGCAGTAGATGGCATTGGGCGCTTTGGCAGGTCTGTGAAGATTG  
 GCTTCTTCATCTCCCTGGACTACTGGTGGTGTACGAATGTTGTCCTTCGAGGAGTGAAGAGAACAGCCC  
 GAAGTATGTGGAGATCATGTCTGCATGTCACCAGCGTGGCGGTGATGCCCTGGTGGCTGGAGCCATCAGC  
 AATGGGGCCCTACGTGAACTGGGCCAAGGGCTGTGCTCCTCAACCACCTGTGCCAACCGAGTACA  
 TCCAGACGCTGCGTGTGCTGGAGACAAAGCCCTTACTCGGGGATCCGGGAGGTGGATGAGTTGTTCTCT  
 TGAAGACTTCCAGGCACTCCCTAGTGAGCTCTCCAGGAATTTGACTATGAGCCGATGGCTGCTGCAAGC  
 CTGGCTCAGGTGCACCGTGCCAAGCTACAGGATGGCACTGCTGTAGCTGTGAAGGTCCAGTACATTGACC  
 TACGAGACCGCTTTGATGGGGATGTGCACACCCTGGAACCTCTGCTGCGGCTCGTGGAGCTCATGCACCC  
 CAGCTTCGGCTTCAGCTGGTCTACAGGACCTGAAGGGGACCTTGGCCAGGAGCTGGACTTCGAGAAT  
 GAGGGCCGGAATTCTGAGCGCTGCGCTCAGGAGCTAAAGCACTTCCACCATGTTGTTATCCCTCGGGTGT  
 ACTGGGACAAGTCCAGCAAGCGGGTGTGACAGCTGACTTCTGTGATGGCTGTAAGGTGAATGACATGGA  
 GGGCATCAAGAGTCAGGGGCTGGCAGTGCAGGATGTAGCAACGAAGCTGATCCAGACCTTTGCTGAACAG  
 ATATCCACACTGGCTTCATTCCTACTCTGACCCCACTTGGCAATGTTCTGGTGGGAAAGGTCCAGATG  
 GAAAAGCAGAGCTGGTGTCTCTGGACCATGGGCTCTACCAGTTCCTGGATGAGAAGGACCGATCCCTCCT  
 GTGCCAGCTGTGGCGGCCATCATCCTGAGGGACGATGCTGCAATGAAGACACATGCAGCCGCACTTGGG  
 GTCCAAGACTACATGCTCTTCTCTGAGGTGCTCATGCAGCGACCTGTGCGCCTGGCCAGCTGTGGGGTT  
 CCCACCTGATAAGCCGGGAGGAGGCGGCCATCATGCAAGACATGGCCCGTGAACACTTTGACGGCATAAT  
 GGAAGTGTCAAGTATTGCCGCGGCCATGCTGCTAGTGTGCGAAACATCAACACAGTGCAGCGCTATC  
 AACTCCAGCCTGGGCACCCCTGTGGACCCTACTTCTCATGGCCAAGAGTGTGCTGTGGGGCTGGAGCC  
 GCCTGGTGGTGCAGCGTACCAAGGCATTTACAGCAGCCGCTCCTGCGCCACATCAAGGTATCTGGGA  
 GGCCTAAAGTTGAGGTGATTCTGAGGCTGGAGATCCTAGCCATGCGGTTACCAGCCCTCATGTTGCGT  
 GTTATGGTCCGCTGGCTTTGCCCAAGGCTGAGGCTGAGGAGTCTATCAGTACCTGGAGATG

**ACGCGT**ACGCGGCCGCTCGAGCAGAACTCATCTCAGAAGAGGATCTGGCAGCAAATGATATCCTGGATT  
 ACAAGGATGACGACGATAAGGTTTAA

**Protein Sequence:**

>RR207838 representing NM\_001135798  
 Red=Cloning site Green=Tags(s)

MWRPMRLCHFSTLLQSRQKPWPCPAIFFRRNFKSPLARTSRTRLLWRRTFSATVVGTPFLFGAHYFMAE  
 SSERRKLRLAVDGI GRFGRSVKIGFFISLDYWWCTNVVLRGVEENSPKYVEIMSACHQRAADALVAGAIS  
 NGGLYVKLGQGLCSFNHLLPTEYIQTLRVLEDKALTRGFREVDELFLDFQALPSELQEFDYEPMAAAS  
 LAQVHRAKLQDGTAVAVKQYIDLRDRFDGDVHTLELLRLVELMHP SFGFSWVLQDLKGTLAQELDFEN  
 EGRNSERCAQELKHFHHVVI PRVYWDKSSKRVL TADFCDGCKVNDMEGIKSQGLAVQDVATKLIQTFAEQ  
 IFHTGF IHSDPHPGNVL VRKGPDKAEL VLLDHGLYQFLDEKDRSSLQWLRAIILRDDAAMKTHAAALG  
 VQDYMLFSEVLMQRPVRLGQLWGSHLISREEAAYMQDMAREHFDGIMEVLKSLPRPMLLVLRNINTVRAI  
 NSSLGTPVDRYFLMAKSAVWGSRLVGAAYQGIYSSRLLRHIKVIWEALKFEVILRLEILAMRFTALMLR  
 VMVRLGFAPKAEEVYQLEM

**TR**TRPLEQKLISEEDLAANDILDYKDDDDKV

**Restriction Sites:**

SgfI-MluI

**Cloning Scheme:**


**ACCN:** NM\_001135798

**ORF Size:** 1746 bp

**OTI Disclaimer:** The molecular sequence of this clone aligns with the gene accession number as a point of reference only. However, individual transcript sequences of the same gene can differ through naturally occurring variations (e.g. polymorphisms), each with its own valid existence. This clone is substantially in agreement with the reference, but a complete review of all prevailing variants is recommended prior to use. [More info](#)

**OTI Annotation:** This clone was engineered to express the complete ORF with an expression tag. Expression varies depending on the nature of the gene.

**Components:** The ORF clone is ion-exchange column purified and shipped in a 2D barcoded Matrix tube containing 10ug of transfection-ready, dried plasmid DNA (reconstitute with 100 ul of water).

**Reconstitution Method:**

1. Centrifuge at 5,000xg for 5min.
2. Carefully open the tube and add 100ul of sterile water to dissolve the DNA.
3. Close the tube and incubate for 10 minutes at room temperature.
4. Briefly vortex the tube and then do a quick spin (less than 5000xg) to concentrate the liquid at the bottom.
5. Store the suspended plasmid at -20°C. The DNA is stable for at least one year from date of shipping when stored at -20°C.

**RefSeq:** [NM\\_001135798.1](#), [NP\\_001129270.1](#)

**RefSeq Size:** 2101 bp

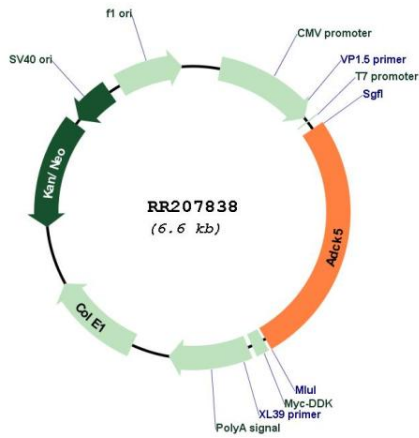
**RefSeq ORF:** 1749 bp

**Locus ID:** 362943

**Cytogenetics:** 7q34

**MW:** 66.8 kDa

Product images:



Circular map for RR207838