

Product datasheet for **RR207820**

Afg3l2 (NM_001134864) Rat Tagged ORF Clone

Product data:

Product Type:	Expression Plasmids
Product Name:	Afg3l2 (NM_001134864) Rat Tagged ORF Clone
Tag:	Myc-DDK
Symbol:	Afg3l2
Synonyms:	MGC109579
Mammalian Cell Selection:	Neomycin
Vector:	pCMV6-Entry (PS100001)
E. coli Selection:	Kanamycin (25 ug/mL)



[View online »](#)

ORF Nucleotide Sequence:

>RR207820 representing NM_001134864
 Red=Cloning site Blue=ORF Green=Tags(s)

TTTTGTAATACGACTCACTATAGGGCGGCCGGGAATTCGTCGACTGGATCCGGTACCGAGGAGATCTGCC
 GCC**CGGATCGCC**

ATGGCTCACCGCTGCCTGCTGTGGGTTCGGGGCGGCTGCCGTCGCGCCTTCTCCCTGCTCGTGC
 CCAGCGCTGCCGTTCCCGGCCGGCGCCCTGCCTCCGTACGCTTTATCAGTACGCTACGGTCCAAAC
 AGCAAACAGCAGAAGTTCTTTCTAAGGGATGTAATTGCTGCTTATCAAAGATTCTGTTCTCGACTCCC
 AAAGGATTTGAAAAATACTTTCTAATGGGAAAAATGGAAAAAGGCCAGCGAATCTAAGGAAGCTGTTG
 GAGAAAAAAGAATCACAACTCCTCGGTCCCCAGTCTTCTGGAGGTGCAAGTGGTGGGGAGGGAAAGCG
 CCGTGGCAAGAAAGAAGATTCTCACTGGTGGTCCAGGTTCCAGAAGGGTACTTTCCATGGGATGACAAG
 GATTTCAAGATGACTTTCTCTGGACTGCTTTTTTTGGAGTGGAGTCATGATTTACTTCTGTTCAAGA
 GCTCTGGGAGAGAAATCACATGGAAAGACTTTGTCAATAACTATCTTTCTAAAGGAGTGGTGGACAGACT
 AGAAGTTGTCAACAAACGTTTTGTTCGTGTGACCTTTACTCCAGGAAAACTCCAGTTGATGGGCAATAC
 GTCTGGTTAATATTGGCAGTGTGACACATTTGAGCGGAATCTGGAGACTTTGCAGCAAGAATTGGGCA
 TAGAAGGGGAGAACCGGGTGCCTGTGGTTTACATTGCTGAAAGCGATGGCTCCTTCTGCTGAGCATGTT
 GCCACGGTACTCATTATTGCTTTTCTACTCTACACCAATAAGAAGAGGGCCCGCTGGCATTGGTCCGACC
 GGTCCGGGAATGGGTGGACTCTTCAGTGTGGGAAAACGACAGCCAAGGTCTTAAAGGATGAGATAGATG
 TGAAGTTTAAAGATGTGGCTGGCTGTGAGGAGGCCAAGCTAGAAAATAATGGAATTTGTGAATTTCTTAA
 AAATCAAAGCAGTATCAAGACCTAGGAGCAAAAATCCCAAAGGGTGCCATTCTCACTGGTCCCCAGGT
 ACTGGGAAGACTGCTAGCTAAGGCCACAGCTGGAGAAGCCAATGTCCCCTTCACTACTGTCAGTGGAT
 CTGAGTTTCTGGAGATGTTTGTCCGTGTGGTCCAGCCAGGGTCCGAGACTTATTTGCCCTTGCACGGAA
 GAATGCTCCTTGCAATCTTTCATTGACGAGATTGATGCTGTGGGAAGGAAGCGTGGTAGAGGCAATTT
 GGAGGACAGAGTGAAGCAGGAGAACACACTCAATCAGCTGCTCGTGGAGATGGACGGCTTCAACACCA
 CCAACGTGGTCACTCTGGCAGGCACAAATCGACCAGACATCCTTGATCCAGCTCTGCTGAGACCAGGCCG
 CTTTGACAGGCAGATCTTATTGGACCCCGAGACATAAAAGGACGAGCTTCAATCTTCAAAGTTCACCTT
 CGACCATGAACTAGACAGTGCCTTGGAAAAAGATAAATTGGCCAGAAAAGTGGCGTCTTGACTCCAG
 GGTTCAGGCGCTGATGTTGCAATGTCTGTAATGAAGCTGCTTTGATTGCTGCCAGACACCTTTCAGA
 TGCCATTAACGAGAAGCACTTCGAACAAGCGATTGAGCGAGTATTGGAGGCTTGGAGAAAAAACCCAA
 GTTCTGCAACCCGAGGAGAAGAAGACTGTGGCTTACCACGAAGCAGGCCACGCAGTCGCCGGCTGGTATC
 TGGAGCATGCAGACCCACTCTTAAAGGTGCCATCATCCCGCTGGAAAGGGGCTGGGCTATGCTCAGTA
 CTTGCCAAAGGAGCAGTATCTGTACACAAGGAGCAGCTGCTGGACAGGATGTGCATGACTCTGGGTGGC
 CGTGTCTCCGAGGAGATCTTCTTGGAAAGAATTACGACCGGTGCCAGGATGACTTGAGGAAGGTTACCC
 AGAGTGCCTATGCCAGATTGTTTCAAGTTGGCATGAATGAGAAAGTGGGGCAGATCTCCTTTGACCTCCC
 ACGACAGGGGGACATGGTATTAGAGAAGCCTTACAGTGAAGCCACTGCAAGAATGATAGACGATGAAGTG
 AGGATACTCATTAGTGAAGCCTATAAAAGAACTGTGGCTCTTCTCACAGAGAAGAAGGCTGACGTGGAGA
 AGGTTGCTCTCTACTGTTAGAGAAAGAAGTATTAGACAAGAACGACATGGTTGAACTTCTGGGTCCCAG
 ACCATTTACAGAAAAATCCACATATGAAGAATTTGTGGAAGGCACTGGCAGCTTAGATGAGGACACTTCT
 CTTCTGAAGGCCCTCAGGATTGGAACAAGGAGCGGGAGAAGGAGAAGAAGGAGAAGAAGGAGAAGGAGG
 AGCCCGTGAATGAGAAGGTGGTCAGC

ACGCGTACGCGGCCGCTCGAGCAGAACTCATCTCAGAAGAGGATCTGGCAGCAATGATATCCTGGATT
 ACAAGGATGACGACGATAAGGTTTAA

Protein Sequence: >RR207820 representing NM_001134864
 Red=Cloning site Green=Tags(s)

```

MAHRCLLLWGRGGCRRGLPPLLVPSCGLGPRRPCLRTLQYATVQTANSRSSLRDVIAAYQRFCSRPP
KGFKEYFPNGKNGKKASESKEAVGEKKESQLSGPQSSGGASGGGGKRRGKKEDSHWWSRFQKGDWPDDK
DFRMYFLWTFWVSGVMIYFLFKSSGREITWKDFVNNYL SKGVVDRLEV VNKRFVRVTFTPGKTPVDGQY
VWFNIGSVDTFERNLETLQQELGIEGENRVPVYIAESDGSFLLSMLPTVLI IAFLLYTIIRRGPAIGRT
GRGMGGLFSVGETTAKVLKDEIDVKFKDVAGCEEAKLEIMEFVNFLKNPKQYQDLGAKIPKGAILTGPPG
TGKTL LAKATAGEANVPFITVSGSEFLEMFGVGPVVRDLFALARKNAPCILFIDEIDAVGRKRGRGNF
GGQSEQENTLNQLLVEMDGFNTTNNVILAGTNRPDILDPALLRPGRFDRQIFIGPPDIKGRASIFKVHL
RPLKLDKSALEKDKLARKLASLTPGFSGADVANCNEAALIAARHLSDAINEKHFEQAIERVIGGLEKKTQ
VLQPEEKKT VAYHEAGHAVAGWYLEHADPLLKVSIIIPRGKGLGYAQYLPKEQYLYTKEQLLDRMCMTLGG
RVSEEIFFRITGAQDDL RKVTSAYAQIVQFGMNEKVGQISFDLPRQGMVLEKPYSEATARMIDDEV
RILISEAYKRTVALLTEKKADVEKVALLLLEKEVLDKNDMVELLGPRPFTEKSTYEEFVEGTGSLDEDT
LPEGLQDWNKEREKEKEKEKEEKEEPVNEKVVS
  
```

TRTRPLEQKLI SEEDLAANDILDYKDDDDKV

Restriction Sites: Sgfl-Mlul

Cloning Scheme:


ACCN: NM_001134864

ORF Size: 2406 bp

OTI Disclaimer: The molecular sequence of this clone aligns with the gene accession number as a point of reference only. However, individual transcript sequences of the same gene can differ through naturally occurring variations (e.g. polymorphisms), each with its own valid existence. This clone is substantially in agreement with the reference, but a complete review of all prevailing variants is recommended prior to use. [More info](#)

OTI Annotation: This clone was engineered to express the complete ORF with an expression tag. Expression varies depending on the nature of the gene.

Components: The ORF clone is ion-exchange column purified and shipped in a 2D barcoded Matrix tube containing 10ug of transfection-ready, dried plasmid DNA (reconstitute with 100 ul of water).

- Reconstitution Method:**
1. Centrifuge at 5,000xg for 5min.
 2. Carefully open the tube and add 100ul of sterile water to dissolve the DNA.
 3. Close the tube and incubate for 10 minutes at room temperature.
 4. Briefly vortex the tube and then do a quick spin (less than 5000xg) to concentrate the liquid at the bottom.
 5. Store the suspended plasmid at -20°C. The DNA is stable for at least one year from date of shipping when stored at -20°C.

RefSeq: [NM_001134864.1](#), [NP_001128336.1](#)

RefSeq Size: 3074 bp

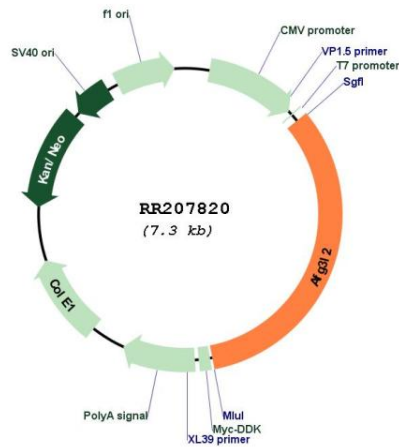
RefSeq ORF: 2409 bp

Locus ID: 307350

Cytogenetics: 18q12.1

MW: 89.4 kDa

Product images:



Circular map for RR207820