

Product datasheet for **RR207785**

Rad23a (NM_001013190) Rat Tagged ORF Clone

Product data:

| | |
|---------------------------|--|
| Product Type: | Expression Plasmids |
| Product Name: | Rad23a (NM_001013190) Rat Tagged ORF Clone |
| Tag: | Myc-DDK |
| Symbol: | Rad23a |
| Mammalian Cell Selection: | Neomycin |
| Vector: | pCMV6-Entry (PS100001) |
| E. coli Selection: | Kanamycin (25 ug/mL) |
| ORF Nucleotide Sequence: | >RR207785 representing NM_001013190 Red=Cloning site Blue=ORF Green=Tags(s) |

TTTTGTAATACGACTCACTATAGGGCGGCCGGAATTCGTCGACTGGATCCGGTACCGAGGAGATCTGCC
GCC**CGATCGCC**

ATGGCCGTCACCATCACACTTAAAACGTTGCAGCAGCAGACCTTCAAGATCCGCATGGAACCTGATGAGA
CGGTGAAGGTGCTGAAGGAGAAGATAGAAGCTGAGAAGGGCAGAGATGCTTCCCTGTGGCTGGACAGAA
ACTCATCTATGCTGGCAAGATCTTGAGTGACGACATCCCATCAAGGAATACCATATAGATGAGAAGAAC
TTTGTGGTTGTCATGGTGACCAAGGCCAAGGCTGGTCAGGGTACCCAGCACCCAGAGGCCTCACCCA
CTGCTGCCCGGAGCCCTCCACACCTTTTCTCCAGCCCAGCATCCGGCATGTCTCATCTCCACCTTC
CAACAGAGAGGACAAGAGCTCATCAGAGGAGTCAGCCACCACAACGTCTCCAGAATCCATTTCTGGCTCT
GTTCCCTCTTCAGGTAGCAGCGGGCAGAGGAAGACGCAGCTTCCACATTAGTACTGGCTCTGAGTATG
AGACGATGCTGACTGAGATCATGTCCATGGGCTACGAGCGGGAGCGGGTTGTGGCCGATTGAGGGCCAG
CTACAACAACCCACCAGCCGTGGAGTACTTGCTCACGGGAATTCAGGAAGCCCTGAGCCTGAACAT
GGTTCTGTCCAGGAAAGCCAGGCGCCGAAACAACCGGCCACAGAAGCAGGGGAGAACCCCTAGAGTTCC
TGCGGGACCAGCCTCAGTTCAGAACATGCGGCAAGTGATTACAGCAGAACCCGGCGCTGCTGCCTGCTCT
GCTCCAGCAGCTGGGCCAGGAGAACCCTCAGCTCTTGACGAAATAGCCGTACCAGGAGCAGTTCATC
CAGATGTTGAATGAGCCCCCGGGAGCTGGCGGACATCTCTGATGTAGAGGGGGAGGTTGGTGCCTAG
GTGAGGAGGCCACAGATGAACATATCCAGGTGACACCGCAGGAGAAGGAAGCTATAGAAAGGAGCCC
AGCCTGCCAAAGTTGTTGGCAAGACCAGGAAGCGACAGATGGGCCCTCTTGGCCTCTGTCCAGCTCC
CTG

ACGCGTACGCGGCCGCTCGAGCAGAACTCATCTCAGAAGAGGATCTGGCAGCAATGATATCCTGGATT
ACAAGGATGACGACGATAAGGTTTAA



[View online »](#)

Protein Sequence: >RR207785 representing NM_001013190
Red=Cloning site Green=Tags(s)

MAVTITLKLQQTFKIRMEPDETVKVLKEKIEAEKGRDAFPVAGQKLIYAGKILSDDIPIKEYHIDEKN
 FVVVMVTKAKAGQGTAPPEASPTAAPEPSTPFPAPASGMSHPPSNREDKSSSEESATTTSPESISGS
 VPSSGSSGREEDAASLVTGSEYETMLTEIMSMGYERERVVAALRASYNPHRAVEYLLTGIPGSPEPEH
 GSVQESQAPEQPATEAGENPLEFLRDQPQFQNMQRVIQQNPALLPALLQQLGQENPQLLQQISRHQEQFI
 QMLNEPPGELADISDVEGEVVGALGEEAPQMNYIQVTPQEKEAIERSPACPKLLARPGSDRWAPLGLCPSS
 L

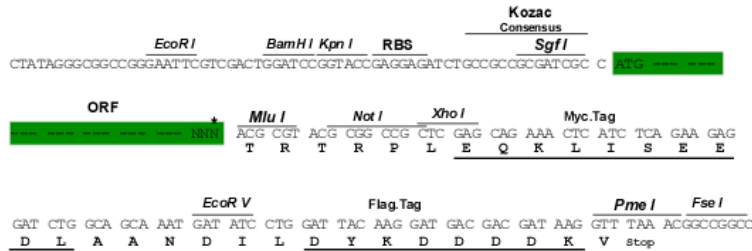
TRTRPLEQKLISEEDLAANDILDYKDDDDKV

Chromatograms: https://cdn.origene.com/chromatograms/ja3818_a09.zip

Restriction Sites: SgfI-MluI

Cloning Scheme:

Cloning sites used for ORF Shuttling:



* The last codon before the Stop codon of the ORF

ACCN: NM_001013190

ORF Size: 1053 bp

OTI Disclaimer: The molecular sequence of this clone aligns with the gene accession number as a point of reference only. However, individual transcript sequences of the same gene can differ through naturally occurring variations (e.g. polymorphisms), each with its own valid existence. This clone is substantially in agreement with the reference, but a complete review of all prevailing variants is recommended prior to use. [More info](#)

OTI Annotation: This clone was engineered to express the complete ORF with an expression tag. Expression varies depending on the nature of the gene.

Components: The ORF clone is ion-exchange column purified and shipped in a 2D barcoded Matrix tube containing 10ug of transfection-ready, dried plasmid DNA (reconstitute with 100 ul of water).

Reconstitution Method:

1. Centrifuge at 5,000xg for 5min.
2. Carefully open the tube and add 100ul of sterile water to dissolve the DNA.
3. Close the tube and incubate for 10 minutes at room temperature.
4. Briefly vortex the tube and then do a quick spin (less than 5000xg) to concentrate the liquid at the bottom.
5. Store the suspended plasmid at -20°C. The DNA is stable for at least one year from date of shipping when stored at -20°C.

RefSeq: [NM_001013190.1](#), [NP_001013208.1](#)

RefSeq Size: 1443 bp

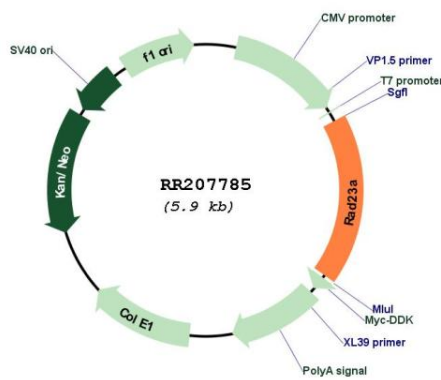
RefSeq ORF: 1056 bp

Locus ID: 361381

Cytogenetics: 19q11

MW: 38.1 kDa

Product images:



Circular map for RR207785