

## Product datasheet for **RR207780**

### Rrm2b (NM\_001130543) Rat Tagged ORF Clone

#### Product data:

**Product Type:** Expression Plasmids  
**Product Name:** Rrm2b (NM\_001130543) Rat Tagged ORF Clone  
**Tag:** Myc-DDK  
**Symbol:** Rrm2b  
**Vector:** pCMV6-Entry (PS100001)  
**E. coli Selection:** Kanamycin (25 ug/mL)  
**Cell Selection:** Neomycin  
**ORF Nucleotide Sequence:** >RR207780 representing NM\_001130543  
Red=Cloning site Blue=ORF Green=Tags(s)

TTTTGTAATACGACTCACTATAGGGCGGCCGGGAATTCGTCGACTGGATCCGGTACCGAGGAGATCTGCC  
GCC**GCGATCGCC**

ATGGGCGACCCGAAAGGCCGGAAGCGGCCAGGCCGAGGAGGGTGAGCAATTGTGTCCAGAGACAAAAG  
AAAACGAGGTGAGGTCAAATGAAGAGCCACTCCTCAGAAAAGAGTCCCGACGTTTGTTCATCTTTCCAAT  
CCAGTACCCTGATATTTGGAAGATGTATAAGCAAGCACAGGCATCTTTCTGGACAGCAGAGGAGGTTGAC  
TTGTCCAAGGACCTCCCTCATTGGAACAAGCTTAAGTCGGAAGAGAAGTATTTTATCTCCACATCTTAG  
CATTTTTTCGCAGCCAGCGATGGAATTGTAATGAAAACCTTGGTGGAGCGTTTTAGTCAAGAGGTGCAGGT  
TCCAGAGGCTCGCTGCTTCTATGGCTTTTCAGATTCTCATCGAGAATGTTCACTCAGAGATGTACAGTTTA  
CTAATAGACACTTACATCAGAGATCCAAAGAAGAGGGAATTTTTATTTAATGCAATTGAAACAATGCCGT  
ATGTTAAGAAAAAGCAGATTGGGCTCTGCGCTGGATAGCAGATAGGAAATCTACTTTTGGGAAAGAGT  
GGTGGCCTTCGCTGCTGTAGAAGGATTTTCTTCTGGATCATTGCTGCTATATTCTGGCTAAAGAAG  
AGAGGCCTCATGCCTGGGCTGACTTTTTCAAATGAACTGATCAGCAGGGATGAAGGACTTCACTGTGACT  
TTGCCTGCCTGATGTTTCAGTACCTGGTAAACAAGCCTTCAGAAGAAAGGTCATGGAAATCATTGTTGA  
TGCTGTTAAAATTGAGCAGGAGTTTTTAACAGAAGCCTTGCTGTTGGCCTCATTGGAATGAACTGTGTT  
TTGATGAAACAATATATTGAGTTTGTAGCTGACAGATTACTTGGAGAAGTTGGATTCTCAAAGATTTTTTC  
AGGCAGAAAATCCCTTTGATTTTATGGAGAACATTTTCGTTAGAAGGGAAAAACAAATTTCTTTGAGAAACG  
AGTTTCTGAGTATCAGCGATTTGCAGTCATGGCAGAAACACAGATAATGTCTTCACCTTGGATGCAGAT  
TTC

**ACGCGT**ACGCGGCCGCTCGAGCAGAACTCATCTCAGAAGAGGATCTGGCAGCAAATGATATCTGGATT  
ACAAGGATGACGACGATAAGGTTTAA



[View online »](#)

**Protein Sequence:** >RR207780 representing NM\_001130543  
Red=Cloning site Green=Tags(s)

MGDPERPEAARPEEGEQLCPETKENEVRSNEEPLLRKSSRRFVIFPIQYDPDIWKMYKQAQASFWTAEVVD  
 LSKDLPHWNKLKSEKYFISHILAFFAASDGIVNENLVERFSQEVQVPEARCFYGFQILIENVHSEMYSL  
 LIDTYIRDPKKREFLFNAIETMPYVKKKADWALRWIADRKSTFGERVVAFAAVEGIFFGSFAAIFWLKK  
 RGLMPGLTFSNELISRDEGLHCDFACLMFQYLVNKPSEERVMEIIVDAVKIEQEFLTEALPVGLIGMNCV  
 LMKQYIEFVADRLLGELGFSKIFQAENPFDFMENISLEGKTNFFEKRVSEYQRFAYMAETTDNVFTLDAD  
 F

TRTRPLEQKLISEEDLAANDILDYKDDDDKV

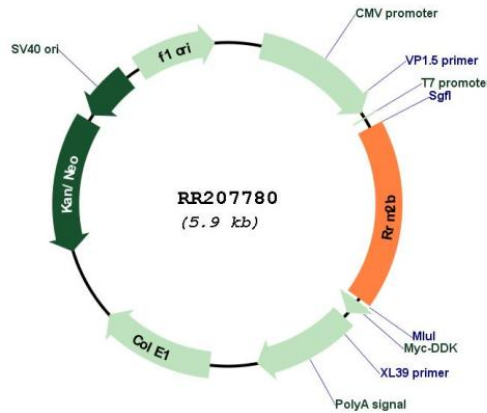
**Restriction Sites:**

Sgfl-MluI

**Cloning Scheme:**



**Plasmid Map:**



**ACCN:** NM\_001130543

<b>ORF Size:</b>	1053 bp
<b>OTI Disclaimer:</b>	The molecular sequence of this clone aligns with the gene accession number as a point of reference only. However, individual transcript sequences of the same gene can differ through naturally occurring variations (e.g. polymorphisms), each with its own valid existence. This clone is substantially in agreement with the reference, but a complete review of all prevailing variants is recommended prior to use. <a href="#">More info</a>
<b>OTI Annotation:</b>	This clone was engineered to express the complete ORF with an expression tag. Expression varies depending on the nature of the gene.
<b>Components:</b>	The ORF clone is ion-exchange column purified and shipped in a 2D barcoded Matrix tube containing 10ug of transfection-ready, dried plasmid DNA (reconstitute with 100 ul of water).
<b>Reconstitution Method:</b>	<ol style="list-style-type: none"> <li>1. Centrifuge at 5,000xg for 5min.</li> <li>2. Carefully open the tube and add 100ul of sterile water to dissolve the DNA.</li> <li>3. Close the tube and incubate for 10 minutes at room temperature.</li> <li>4. Briefly vortex the tube and then do a quick spin (less than 5000xg) to concentrate the liquid at the bottom.</li> <li>5. Store the suspended plasmid at -20°C. The DNA is stable for at least one year from date of shipping when stored at -20°C.</li> </ol>
<b>RefSeq:</b>	<a href="#">NM_001130543.1</a> , <a href="#">NP_001124015.1</a>
<b>RefSeq Size:</b>	1204 bp
<b>RefSeq ORF:</b>	1056 bp
<b>Locus ID:</b>	299976
<b>Cytogenetics:</b>	7q22
<b>MW:</b>	40.8 kDa