

## Product datasheet for **RR207768**

### Gprc5b (NM\_001106304) Rat Tagged ORF Clone

#### Product data:

Product Type: Expression Plasmids  
 Product Name: Gprc5b (NM\_001106304) Rat Tagged ORF Clone  
 Tag: Myc-DDK  
 Symbol: Gprc5b  
 Mammalian Cell Selection: Neomycin  
 Vector: pCMV6-Entry (PS100001)  
 E. coli Selection: Kanamycin (25 ug/mL)  
 ORF Nucleotide Sequence: >RR207768 representing NM\_001106304  
 Red=Cloning site Blue=ORF Green=Tags(s)

TTTTGTAATACGACTCACTATAGGGCGGCCGGAATTCGTCGACTGGATCCGGTACCGAGGAGATCTGCC  
 GCC**CGATCGCC**

ATGAGAACCACCAAGTGCCTTCCCTTGCCCTGCTCCTGGTGATTGCCTCTGTGGCTTCGGAGAACGCCA  
 GCACGTCCCGGGCTGTGGGCTGGACCTTCTCCTCAGTACGTGTCCCTGTGCGACTGGACGCCATTTG  
 GGAATCGTGGTGGAGGCAGTGGCCGGGCGAGGGCCCTGATCACACTGCTTCTGATGCTTATTCTCCTG  
 GTGAGACTGCCCTTCATCAAGGACAAGGAAAGGAGGCGCCTGTGTGCCTCCACTTCTCTTCTGTGG  
 GGACCCCTGGCCCTTTTGGCCTGACGTTTGCCTTTCATCATCCGGATGGACGAGACAATCGCTCCATCCG  
 ACGCTTCTCTGGGGTGCCTCTTCGCACTCTGCTTTTCCTGCCTGCTGAGCCAGGCGTGGCGGGTACGG  
 AGGCTGGTGCGCCAGGGCACGAGCCCGGCCAGCTGGCAGCTGGTGGAGCCTGGCACTGTGCCTGATGCTGG  
 TGCAGGTCATCATCGCCACTGAGTGGTGGTGGTACTGTGCTACGTGACACGAAGCCGGCTGCGCCTA  
 CGAGCCCATGGATTTTGTGATGGCGCTCATCTACGACATGGTGGTGGTATCACCCCTAGCGCAGTCC  
 CTCTTCACACTGTGTGGCAAGTTCAAGCGGTGGAAGGTGAACGGAGCCTTCATCCTCACTACCTTCC  
 TCTCTGTGCTCATCTGGGTGATCTGGATGACCATGTACCTCTTCGGCAACTCGTTAATTAAGCGGGCAGA  
 TGCCCTGGAGCGACCTACCTTGGCCATCACGCTGGTAGCCAGCGGATGGGTCTTCGTATCTTCCACGCC  
 ATTCCAGAGATCCACTACACCCTTCTCCACCCCTGCAGGAGAACCACCAACTACTTCGATACTTCAC  
 AGCCCCGGATGCGGGAGACGGCCTTTGAGGAGGAAATGCACCTGCCTCGGGCCTACATGGAACAAGGC  
 CTTCTCCATGGATGAACATAACGCAGCTTTCGATCAGCAGTAGGCTTTTCCAATGGAAGCTTGGAGCAA  
 AGATCCAGCAGCCTGGGGAAGAAGCCAGCAGCTTGGGAAACCGGCCAGTGCGCCCTTCAGAAGCAATG  
 TGTACCAGCCGACAGAGATGGCCGTCGTGCTCAATGGTGGGACTAATCCCATGGCACCTGTT

**ACGCGT**ACGCGGGCCGCTCGAGCAGAACTCATCTCAGAAGAGGATCTGGCAGCAAATGATATCCTGGATT  
 ACAAGGATGACGACGATAAGGTTTAA



[View online »](#)

**Protein Sequence:** >RR207768 representing NM\_001106304  
Red=Cloning site Green=Tags(s)

MRTHQVLPLPLLLVIASVASENASTSRGCGLDLLPQYVSLCDLDAIWGIVVEAVAGAGALITLLMLILL  
 VRLPFIDKERRRPVCLHFLFLLGTLGLFGLTFAFIIRMDETICSIRRFLWGVLFALCFSCLLSQAWRVR  
 RLVRQGTSPASWQLVSLALCLMLVQVIIATEWLVLTVLRDTKPACAYEPMDFVMALIYDMVLLAITLAQS  
 LFTLCGKFKRWKVNAGFILITTFLSVLIWVIWMTMYLFGNSLIKRADAWSPTLAILTVASGWVVFIFHA  
 IPEIHYTLLPPLQENPPNYFDTSQPRMRETAFFEEMHLPRAYMENKAFSMDEHNAALRSVAVGFSNGSLEQ  
 RSSSLGKKPSSLGNRPSAPFRSNVYQPTEMAVVLNGGTNPMAPV

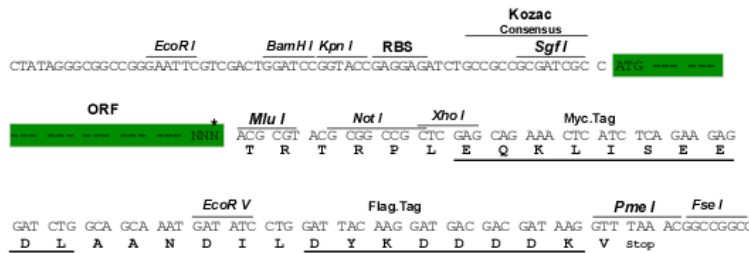
TRTRPLEQKLISEEDLAANDILDYKDDDDKV

**Chromatograms:** [https://cdn.origene.com/chromatograms/ja2124\\_c06.zip](https://cdn.origene.com/chromatograms/ja2124_c06.zip)

**Restriction Sites:** Sgfl-MluI

**Cloning Scheme:**

Cloning sites used for ORF Shuttling:



\* The last codon before the Stop codon of the ORF

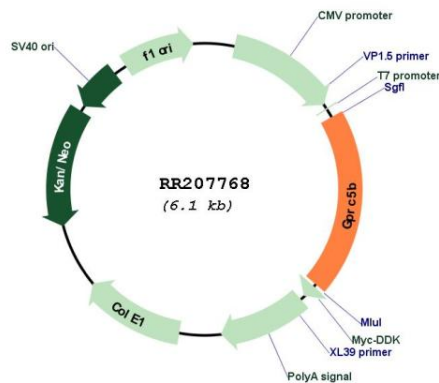
**ACCN:** NM\_001106304

**ORF Size:** 1182 bp

**OTI Disclaimer:** Due to the inherent nature of this plasmid, standard methods to replicate additional amounts of DNA in E. coli are highly likely to result in mutations and/or rearrangements. Therefore, OriGene does not guarantee the capability to replicate this plasmid DNA. Additional amounts of DNA can be purchased from OriGene with batch-specific, full-sequence verification at a reduced cost. Please contact our customer care team at [custsupport@origene.com](mailto:custsupport@origene.com) or by calling 301.340.3188 option 3 for pricing and delivery.

The molecular sequence of this clone aligns with the gene accession number as a point of reference only. However, individual transcript sequences of the same gene can differ through naturally occurring variations (e.g. polymorphisms), each with its own valid existence. This clone is substantially in agreement with the reference, but a complete review of all prevailing variants is recommended prior to use. [More info](#)

<b>OTI Annotation:</b>	This clone was engineered to express the complete ORF with an expression tag. Expression varies depending on the nature of the gene.
<b>Components:</b>	The ORF clone is ion-exchange column purified and shipped in a 2D barcoded Matrix tube containing 10ug of transfection-ready, dried plasmid DNA (reconstitute with 100 ul of water).
<b>Reconstitution Method:</b>	<ol style="list-style-type: none"> <li>1. Centrifuge at 5,000xg for 5min.</li> <li>2. Carefully open the tube and add 100ul of sterile water to dissolve the DNA.</li> <li>3. Close the tube and incubate for 10 minutes at room temperature.</li> <li>4. Briefly vortex the tube and then do a quick spin (less than 5000xg) to concentrate the liquid at the bottom.</li> <li>5. Store the suspended plasmid at -20°C. The DNA is stable for at least one year from date of shipping when stored at -20°C.</li> </ol>
<b>RefSeq:</b>	<u>NM_001106304.1, NP_001099774.1</u>
<b>RefSeq Size:</b>	2549 bp
<b>RefSeq ORF:</b>	1185 bp
<b>Locus ID:</b>	293546
<b>Cytogenetics:</b>	1q35
<b>MW:</b>	44.5 kDa

**Product images:**


Circular map for RR207768