

Product datasheet for **RR207707**

Cpa5 (NM_001002808) Rat Tagged ORF Clone

Product data:

Product Type: Expression Plasmids
 Product Name: Cpa5 (NM_001002808) Rat Tagged ORF Clone
 Tag: Myc-DDK
 Symbol: Cpa5
 Synonyms: MGC94525
 Vector: pCMV6-Entry (PS100001)
 E. coli Selection: Kanamycin (25 ug/mL)
 Cell Selection: Neomycin
 ORF Nucleotide Sequence: >RR207707 representing NM_001002808
 Red=Cloning site Blue=ORF Green=Tags(s)

TTTTGTAATACGACTCACTATAGGGCGCCGGAATTCGTCGACTGGATCCGGTACCGAGGAGATCTGCC
 GCC**CGATCGCC**

ATGCAGGGCACCAAGGAGGAGGCATAGGCCCTGGGCTATCCCCTGTGGACAGAAGGACACTTCTGTTCT
 GCAACTTTATCCTGGCTGTAGCTTGGGGCCAAGTGAATTTACAGGAGACCAGGTTCTTCGAGTCTGGC
 CAAAAATGAGAAGCAGCTGTCACCTTCTCAGGGATCTGGAGATCCAGAAGCCCCAGAAGGTGGACTTCTGG
 CGTGGCCAGCCAGACCTAGCCTCCCTGTGGACATGAGAGTTCCTTCTCTGAAGTGCAGCAGCTTAAAG
 CTTATTTGAAGTCTCACGGCCTTGCCTACAGCGTCATGATAAAGGATATCCAGGTGCTACTGGATGAAGA
 GAGAGATGCCATGGCAAGGTCCCGCAGGCTGGAACGCAGTACCAACGGCTTCAGCTATTCCTCTTATCAC
 ACTCTGGAGGAGATATAAATTGGATCGACAACCTTGTAGCTGAACATTCTAATCTTGTCTCCAAAATTC
 ACATTGGCAAGAGCTTTGAAAATCGGTCCATTCTTGTCTGAAGTTCAGCACTGGAGGTCCAAAATCGCAC
 AGCCATCTGGATTGACTGTTGATTTCCCGAGAGTGGATCACTCATGCCACTGGCATCTGGATCTCG
 CAGAAGATTGTCAATGCATATAGCAAAGACCATGTCTTGAAAAAGTATTAACACTATGGACATTTTCA
 TAGAGATTGTACCAACCCTGATGGCTTTGCCTTACTCATAGCATGAATCGCTTGTGGCGAAAAACAA
 GTCAATTAACCCGGCATCGTCTGCGTTGGTGTGGACCTCAACAGGAATTGGAGGACAGGCTTCGGAGGA
 AATGGTTCTAACAAAAACCCCTGCTCAGAGACTTACCGAGGGCCGGCTCCCGAGTCAGAGCCAGAGGTAG
 CTGCGATTGTGGCCTTATCACGGGTACCGGAACTTCAAAGCTATGATCTCCATTACAGCTACTCTCA
 GATGGTCATGTACCCGTATGGCCATTCTCTGGAGCCTGTGCCAACCATAAAGAAGTGTTCGAGCTTGGC
 AAGGATGCAGTAAAGGCTCTCTACAAGGTGCACGGGATGGAGTACATTTTGGCAGCATCAGTACCACCC
 TCTATTACGCCAGCGGGATCACGGTGGACTGGCTTATGACAGTGGCATCAAGTATGCCTTCAGCTTCGA
 ACTCCGGGACACTGGACAATATGGTTTCTGCTCCAGCCTCACAGATTGTTCCACAGCCGAGGAGACA
 TGGATGGCACTACGGACCATTATGAAACACACCCTGAATCACCCCTAT

ACGCGTACGCGGCCGCTCGAGCAGAAACTCATCTCAGAAGAGGATCTGGCAGCAAATGATATCCTGGATT
 ACAAGGATGACGACGATAAGGTTTAA



[View online »](#)

Protein Sequence: >RR207707 representing NM_001002808
 Red=Cloning site Green=Tags(s)

MQGTQGGGIGPLSPVDRRTLLFCNFILAWAQVNFITGDQVLRVLAKNEQLSLLRDLEIQKPQKVDFW
 RGPAPRSLPVDMRVPPFSELPVKAYLKSHGLAYSVMIKDIQVLLDEERDAMARRRERSTNGFSYSSYH
 TLEEIYNWIDNFVAEHSNLVSKIHIKGSFENRSILVLFKSTGGPNRTAIWIDTGIHSREWITHTATGIWIS
 QKIVNAYSVDHVLKVKLNTMDIFIEIVTNPDGFAFTHSMNRLWRKNKSIQPGIVCVGVDLNRNWRGFGG
 NGSNKNPCSETYRGPAPSEPEVAIAIVAFITGHGNFKAMISHSYSQMVMPYGHSLPEVPNHKELFELA
 KDAVKALYKVHMEYIFGSISTTLYSASGITVDWAYDSGIKYAFSFLRDTGQYGFLLPASQIVPTAEET
 WMALRTIMKHTLNHPY

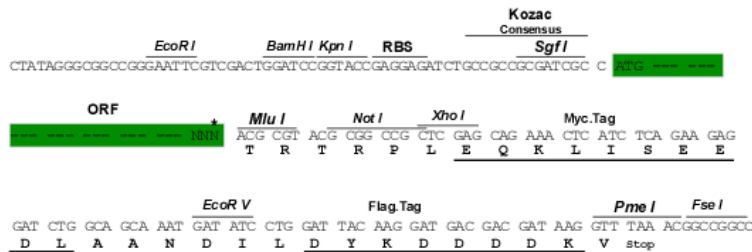
TRTRPLEQKLISEEDLAANDILDYKDDDDKV

Restriction Sites:

SgfI-MluI

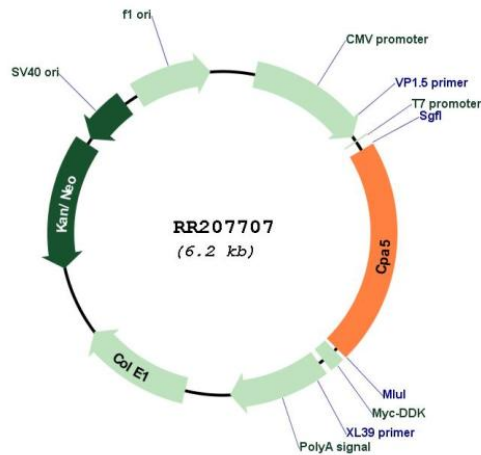
Cloning Scheme:

Cloning sites used for ORF Shuttling:



* The last codon before the Stop codon of the ORF

Plasmid Map:



ACCN:

NM_001002808

| | |
|-------------------------------|---|
| ORF Size: | 1308 bp |
| OTI Disclaimer: | The molecular sequence of this clone aligns with the gene accession number as a point of reference only. However, individual transcript sequences of the same gene can differ through naturally occurring variations (e.g. polymorphisms), each with its own valid existence. This clone is substantially in agreement with the reference, but a complete review of all prevailing variants is recommended prior to use. More info |
| OTI Annotation: | This clone was engineered to express the complete ORF with an expression tag. Expression varies depending on the nature of the gene. |
| Components: | The ORF clone is ion-exchange column purified and shipped in a 2D barcoded Matrix tube containing 10ug of transfection-ready, dried plasmid DNA (reconstitute with 100 ul of water). |
| Reconstitution Method: | <ol style="list-style-type: none">1. Centrifuge at 5,000xg for 5min.2. Carefully open the tube and add 100ul of sterile water to dissolve the DNA.3. Close the tube and incubate for 10 minutes at room temperature.4. Briefly vortex the tube and then do a quick spin (less than 5000xg) to concentrate the liquid at the bottom.5. Store the suspended plasmid at -20°C. The DNA is stable for at least one year from date of shipping when stored at -20°C. |
| RefSeq: | NM_001002808.2 , NP_001002808.2 |
| RefSeq Size: | 2100 bp |
| RefSeq ORF: | 1311 bp |
| Locus ID: | 408212 |
| Cytogenetics: | 4q22 |
| MW: | 49.1 kDa |
| Gene Summary: | may have carboxypeptidase activity [RGD, Feb 2006] |