

Product datasheet for **RR207625**

Ltbp1 (NM_021587) Rat Tagged ORF Clone

Product data:

Product Type:	Expression Plasmids
Product Name:	Ltbp1 (NM_021587) Rat Tagged ORF Clone
Tag:	Myc-DDK
Symbol:	Ltbp1
Vector:	pCMV6-Entry (PS100001)
E. coli Selection:	Kanamycin (25 ug/mL)
Cell Selection:	Neomycin
ORF Nucleotide Sequence:	>RR207625 representing NM_021587 Red=Cloning site Blue=ORF Green=Tags(s)

TTTTGTAATACGACTCACTATAGGGCGGCCGGGAATTCGTCGACTGGATCCGGTACCGAGGAGATCTGCC
GCC**CGATCGCC**

ATGGCGGGAGCCTGGCTCAGGTGGGACTCCTGCTCTGGGCAGGGCTGCTAGCGTGGTCTGCGCACGGCC
GGGTGCGGAGGATCACGTACGTGGTGCGCCGGGGCCGGGACTGCCGGCCGGAACCCTGCCTCTGGCTGG
GCCCGCGGACCTTCAACGTGCGACTGGACGCCAGGTACAGCCGGAGCTCAACAGCCACCTCCAGCCGC
TCCTTGGCCGGGCCCGCCAGCCGAGCGGACCCGGCGCACCAAGCCAGCCTGGCGGCGCGCCCTGCCCGGGC
TCCGATCTCCGCTGCCACCCGAGCCCGCGCTCCGGGGCGCCAGCCGCGCAGCTCCACTCAAAGGCCGG
TGCTCAGACCGCGGTCACTCGCTTCGCCAAACATGGCAGGCAAGTCGTGCGCTCCAAAGTCAGCAGGAC
ACGCAGAGCTCCGGGGCTCCAGACTGCAGGTTACGAGAAGCAGCAGCTGCAGGGGATCAATGTCTGTG
GAGGGCAGTGTCCATGGGTGGAGTAAGGCCCGGGCTCCAGAGGTGCACCAAACCAAGCTGTGTTC
ACCATGCCAGAAATGGAGGGATGTGTCTCCGGCCTCAGTTCTGTGTGTGAAGCCAGGGACAAAGGGCAA
GCCTGCGAGATCACAGCTGCCAGGACACCATGTCACCAAGTGTGGAGGGCAGAACCCTGGCTCCTCGT
GGTCCCTCCTGAGCCAGCAGCAAAGCGTACTTCAACCAAGAAGGCAGACACCTTACCAAGGGTCAGTCC
AGTGGCCAGATGACCTTGACCTCAAGCCGAAGCCGTCCATGGGACTCTCCAGCAGATACATTCTCAA
GTGGCACCCCTGTCTTCCAGAATGTGATGATTCGGCATGGCCAGACCCAGGAGTATGTGCTCAAGCCCA
AGTACTTCCCAGCCCAAGGTGGTCTCTGGAGAGCAGTCCACAGAAGGCTCTTTCTCTTTAAGATATGG
GCAGGAGCAAGGCACAGCACCCCTTTCAGGTGAGTAACCACACTGGTGCATCAAGGTGGTCTTTACTCCG
AGCATCTGTAAAGTGACCTGCACCAAGGCAACTGTCAACAACAGCTGCCAGAAGGGGAATACCACCACTC
TCATTAGTGAGAACGGCCATGCAGCCGACACCCGTACAGCCACGAACCTCCGAGTGGTAATTTGCCATCT
TCCATGTATGAATGGTGGCCAGTGCAGTCAAGGGACAAATGTCAAGTGCCTCCAATTTACAGGAAAG
CACTGGGAGTACGTATCCATTCCACACATACCTTGCCTTAACCATGACCAACAGCAAGGGGTCAA
AGTGAAATTTCCCCCAACATAGTCAATATCCATGTGAAGCATCCTCCTGAGGCTTCTGTGCAGATACAC
CAGGTTTCCAGAATTGATGGCCAGTGGCCAGAGGGTGAAGAAGTGAACCGGGCCAGTCCCAAGTCT
CTTACCAAGGGCTGCCCGTCCAGAAGACCCAGACAGTCCATTCCACATACTCCACCAGCAGGTCAATTC
GCATGTGTATCCCGTGGCTGCTAAGACACAACCTGGACGATGCTCCAGGAAACCATTGGGTACAGTGT



[View online »](#)

GGCAAAGCGCTCCCTGGCCTTTCAAAGCAAGAGGACTGCTGTGGGACAGTGGGGACCTCCTGGGGCTTTA
 ACAAATGCCAGAAATGCCCAAGAAGCAATCCTATCATGGATATACTCAAATGATGGAATGCCTACAAGG
 ATATAACGGGTTAACAAACACCTTTTGTCAAGATTAATGAATGTCAGCTCCAAGGCGTATGCCCTAAT
 GGGGAGTGTGTAATACCATGGGCAGCTACAGATGCTCCTGCAAAATGGGATTTGGGCTGACCCCTACCT
 TTTCAAGTGTGTGCCGGATCCCCTATGATCTCAGAAGAAAAGGGCCCTGCTACCGCCTCGTCAGTCC
 TGGGAGGCAGTGTATGCACCTCTCTGTTCACCTACCAAGCAGATCTGCTGTTGAGTGTGGGCAAG
 GCCTGGGGCCACAGTGTGAGAAATGTCCCCTCCCGGGCACAGCTGCTTTTAAGGAAATCTGTCTGGTG
 GAATGGGTTATACGGTTTCTGGCATTATAGACGAGGCCAATCCATCAGCATATAGGTAAGAAGCTGT
 ATTTGTCAAGCCAAAGAACAACACTCAACCTGTTGCTAAAAGTACTCATCCTCCACCTCTCCCAGCCAAGGAA
 GAGCCTGTGGAGGCCCTGACCTCCTCGCGGGAACATGGGCCGGGAGTGGCAGAGCCTGAAGTGGTAACAG
 CACCTCCTGAGAAGGAAATACCCCTACTGGATCAAGAGAAAAAAGACTTGAACCTGGGCAACCCAGCT
 CTCCCAGGGGTTTCAACTATTCATCTGCACCCACAGTCCCAGTAGTGGTTGAAAAGACATCCCCTCT
 GTGCCCTGTGGAGTGGCTCCTGAAGTTCTACATCAAGTGCCAGCCAAGTATTGCTCCTACGCAAGTAA
 CAGAAATCAACGAATGTACTGTGAACCCGGATATTTGCGGAGCAGGACACTGCATCAACCTGCCGGTGAG
 GTATACCTGCATATGCTACGAGGGCTACAAGTTCAGTGAGCAGCAGAGGAAGTGCATTGACATTGATGAA
 TGTGCTCAGGCCAGCATCTCTGCTCCCAGGGTCTGCTGTGAGAACACAGAGGGAAGTTTCTGTGTATTT
 GCCCAGCAGGGTTTATAGCCAGTGAGGAGGGTTCTAACTGTATAGATGTGGATGAATGTCTGAGGCCGA
 TGTGTGTAGGGACGGCCCTGCATCAACACTGCTGGGGCCTTCCGATGCGAATACTGTGACAGTGGGTAC
 CGGATGTCACGACGGGGCCACTGTGAGGATATCGATGAGTGTCTGACCCCAAGTACCTGTCCCGAGGAAC
 AATGCGTGAATTTCCCAGGTTCTTACCAGTGTGTGCCCTGCACAGAAGGGTCCGTGGCTGGAATGGACA
 ATGCCCTGATGTGGACGAGTGCCTGCAGCCAAAGTCTGTACCAATGGTTCCTGCACCAACCTGGAAGGC
 TCCTACATGTGTTCTGCCACAAGGGCTACAGCCCCACACCAGACCATAGACACTGTCAAGATATTGATG
 AATGTCAGCAAGGGAACCTGTGCATGAACGGGCAGTGCAAAAACACTGACGGCTCCTTCCGGTACCTG
 TGGCAGGGCTATCAGCTGTGAGCGGCTAAAGACCAATGTGAAGATATTGACGAATGCGAGCACCTGCAC
 CTCTGCTCTACGGGCAGTGCAGGAACACAGAGGGCTCCTTCCAGTGTGTTGTGCAACCAGGGTTACAGAG
 CATCTGTGCTTGGAGACCACTGCGAGGATATCAATGAATGCTTGGAGGACAGTAGTGTCTGCCAGGGAGG
 TGACTGCATCAATACAGCAGGGTCTATGACTGCACGTGCCCGGATGGACTCCAGCTGAATGACAATAAG
 GGCTGTCAAGACATTAATGAATGTGCACAGCCAGGACTCTGTGCACCTCATGGGGAGTGTCTAAACACAC
 AAGGCTCATTCCACTGTGCTGTGAACAAGGGTCTCCATCTCTGCAGATGGTCTACTTGTGAAGATAT
 TGATGAGTGTGTTAACAACTGTGTGTGACAGTACGGCTTCTGTGACAACACAGCCGGCTCTTCCGC
 TGCTCTGTTATCAGGGCTTCAAGCCCCACAGGATGGGCAAGGGTGTGTGGATGTGAACGAATGTGAAC
 TGCTCAGTGGTGTATGTGGGAGGCTTTCTGTGAAAATGTGGAAGGGTCTTCTGTGCGTGTGTGCCGA
 TGAGAACCAGGAGTACAGCCCCATGACTGGGCAGTGTGCTCCCGGGCTACTGAAGATTCAGGTGTGGAT
 CGTCAGCCCAAAGAAGAAAAGAAGGAGTGTATTATAATCTCAATGATGCCAGTCTCTGTGATAACGTGC
 TGGCCCCAACGTACCAAAACAAGAGTGTGCTGTACATCGGGCGCCGGCTGGGGAGACAATTGTGAGAT
 CTTCCCTTGGCCAGTCCAGGGGACTGCTGAGTTCTCGAAATGTGCCCTAGAGGAAAAGGTTTTGTCCCT
 GCTGGAGAATCCTCTTACGAAACCGGTGGTGAGAACTACAAGATGCTGACGAATGCCTGCTGTTTGGAG
 AGGAAATCTGAAAAACGGTACTGTTTGAACACTCAGCCTGGGTATGAATGCTACTGCAAGGAAGGGAC
 ATACTACGATCCTGTCAAATTACAGTGTGTTTGTATGGATGAATGCCAAGACCCTAACAGTTGTATCGAT
 GGCCAGTGTGTTAATACAGAGGGCTCTTACAACCTGCTTTTGCACCCACCAATGGTCTGATGCCTCTG
 AGAAGAGATGTGTGCAGCCAACGAATCAATGAACAAATAGAAGAAAACCGATGTCTATCAAGATCTGTG
 CTGGGAGCATCTGAGTGAAGGAGTACGTGTGTAGCCGCTCCTTGTAGGCAAGCAGACGACATACACAGAG
 TGCTGCTGTTTGTACGGGGAGGCATGGGCATGCAGTGTGCTCTGCCCCATGAAGGACTCAGATGACT
 ATGCCAGCTGTGCAACATCCCTGTGACAGGACGGCGGCGACCATATGGACGGGATGCGTTGGTGGACTT
 CAGTGAACAGTATGGCCAGAAACAGACCCTTACTTCATTCAGGATCGCTTCTAACAGCTTTGAGGAG
 CTACAGGCTGAGGAATGTGGCATCCTCAACGGCTGTGAAAATGGCCGCTGTGTAAGGGTTCAGGAAGGTT
 ATACTTGGATTGCTTTGATGGATATCATCTGGATATGGCCAAGATGACCTGTGTTGATGTAATGAATG
 CAGCGAGCTGAATAATCGGATGTCTCTGCAAGAACGCCAAGTGCATTAAACAGAAAGGCTCTACAAA
 TGGCTGTGCTACCAGGCTACGTACCATCTGACAGCCCAACTACTGTACACCCTGAACACCGCTTTGA
 ATTTAGACAAAGACAGTGACCTGGAG

ACGCGTACGCGGCCGCTCGAGCAGAAACTCATCTCAGAAGAGGATCTGGCAGCAAATGATATCCTGGATT

ACAAGGATGACGACGATAAGGTTTAA

Protein Sequence:

>RR207625 representing NM_021587
 Red=Cloning site Green=Tags(s)

MAGAWLRWGLLLWAGLLAWSAHGRVRRITYVVRPGPLPAGTLPLAGPRTFNVALDARYSRSSSTATSSR
 SLAGPPAERTRRSQPFGAALPGLRSPLPEPARPGAPSRQLHSKAGAQTAVTRFAKHGRQVVRSKVQQD
 TQSSGGSRLLQVQKQQLQGINVCGGQCCHGWSKAPGSQRCTKPCVPPCQNGMCLRPQFCVCKPGTKGK
 ACEITAAQDTMSPVFGGQNPSSWVPPEAAKRTSTKKADTLPRVSPVAQMTLTLKPKPSMGLSQQIHSQ
 VAPLSSQNVMIHGHGTQEYVLKPKYFPAPKVVSQEGSTEGSFLRYGQEQGTAPFQVSNHTGRIKVVFTP
 SICKVCTKGNCHNSCQKGNNTTLLISENGHAADTLTATNFRVVIICHLPCMNGGQCSSRDKCQCPPNFTGK
 LCQIPVLGASMPKLYQHAQQPGKALGSHVIHSTHTLPLTMTNQQGVKVKFPPNIVNIHVKHPPPEASVQIH
 QVSRIDGVPVQQRVKEVQPGQSQVSYQGLPVQKTQTVHSTYSHQQVIPHVYPVAAKTQLGRCFQETIGSQ
 GKALPGLSKQEDCCGTVGT SWGFNKQCKPKKQSYHGYTQMMECLQGYKRVNNTFCQDINECQLQGVCPN
 GECLNTMGSYRCSCKMGFGPDPTFSSCVDPMPMISEEKGPCYRLVSPGRQCMHPLSVHLTKQICCSVVGK
 AWGPQCEKCLPGTAAFKIICPGMGYTVSGIHRRRPIHQHIGKEAVFVKPKNTQVPAKSTHPPPLPAKE
 EPVEALSSREHGPVGAEPVVTAPEKEIPSLDQEKTRLEPGQPQLSPGVSTIHLHPQFPVVVEKTSPP
 VPVEVAPEGSTSSASQVIAPTQVTEINECTVNPDI CGAGHCINLPVRYTCICYEGYKFSEQQRKCIDIDE
 CAQAQHLCSQRCENTEGSFLCICPAGFIASEEGSNCIDVDECLRPDVCRDGRICINTAGAFRCEYCDSGY
 RMSRRGHCEDIDECLTPSTCPEEQCVNSPGSYQCVPTCTEGFRGWNGQCLDVDECLQPKVCTNGSCTNLEG
 SYMCSCHKGYSPTPDHRHCQDIDE CQQGNLCMNGQCKNTDGSFRCTCGQYQLSAAKDQCEDIDECEHRH
 LCSHGQRNTEGSFQCLCNQGYRASVLGDHCEDINECLESSVCQGGDCINTAGSYDCTCPDGLQLNDNK
 GCQDINECAQPGLCAPHGECLNTQGSFHCVEQGFISISADGRTCEDIDE CVNNTVCDSHGFC DNTAGSFR
 CLCYQGFQAPQDQGQCVDVNECELLSGVCGEAF CENVEGSFLCVCADENQEYSPMTGQCRSRATEDSGVD
 RQPKKEEKCEYYNLNDASLCDNVLAPNVTQCECC TSGAGWGDNCEIFPCPVQGTAEFSEMCPRGKGFVP
 AGESSYETGGENYKDADECLFGEEICKNGYCLNTQPGYECYCKEGTYDPVKLQCFDMDECQDPNSCID
 GQCVNTEGSYNCFCTHPMLDASEKRCVQPTESNEQIEETDVYQDL CWEHLSEEYVCSRPLVGKQTTYTE
 CCCLYGEAWGMQCALCPMKDSDDYAQLCNIPTVTRRRPYGRDALVDFSEQYGPETDPYFIQDRFLNSFEE
 LQAECEGILNGCENGRVVRVQEGYTCDFDGYHLDMAKMT CVDVNECSELNNRMSLCKNAKCINTEGSYK
 CVCLPGYVPSDKPNYCTPLNTALNLDKDS DLE

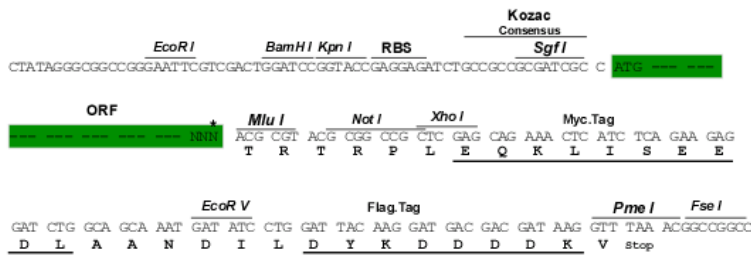
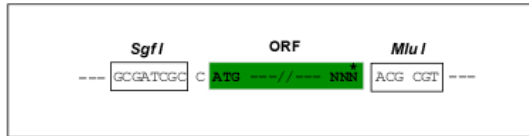
TRTRPLEQKLISEEDLAANDILDYKDDDDKV

Restriction Sites:

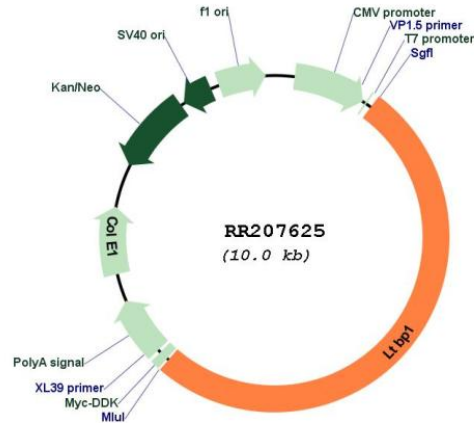
SgfI-MluI

Cloning Scheme:

Cloning sites used for ORF Shuttling:



* The last codon before the Stop codon of the ORF

Plasmid Map:


ACCN: NM_021587

ORF Size: 5136 bp

OTI Disclaimer: The molecular sequence of this clone aligns with the gene accession number as a point of reference only. However, individual transcript sequences of the same gene can differ through naturally occurring variations (e.g. polymorphisms), each with its own valid existence. This clone is substantially in agreement with the reference, but a complete review of all prevailing variants is recommended prior to use. [More info](#)

OTI Annotation: This clone was engineered to express the complete ORF with an expression tag. Expression varies depending on the nature of the gene.

Components: The ORF clone is ion-exchange column purified and shipped in a 2D barcoded Matrix tube containing 10ug of transfection-ready, dried plasmid DNA (reconstitute with 100 ul of water).

Reconstitution Method:

1. Centrifuge at 5,000xg for 5min.
2. Carefully open the tube and add 100ul of sterile water to dissolve the DNA.
3. Close the tube and incubate for 10 minutes at room temperature.
4. Briefly vortex the tube and then do a quick spin (less than 5000xg) to concentrate the liquid at the bottom.
5. Store the suspended plasmid at -20°C. The DNA is stable for at least one year from date of shipping when stored at -20°C.

RefSeq: [NM_021587.1](#), [NP_067598.1](#)

RefSeq Size: 6244 bp

RefSeq ORF: 5139 bp

Locus ID: 59107

UniProt ID: [Q00918](#)

Cytogenetics: 6q13
MW: 186.6 kDa
Gene Summary: large subunit component of masking protein; neutralizes the activity of TGF-beta 1 [RGD, Feb 2006]