

Product datasheet for **RR207517**

Akap2 (NM_001011974) Rat Tagged ORF Clone

Product data:

Product Type:	Expression Plasmids
Product Name:	Akap2 (NM_001011974) Rat Tagged ORF Clone
Tag:	Myc-DDK
Symbol:	Akap2
Synonyms:	AKAP-2
Vector:	pCMV6-Entry (PS100001)
E. coli Selection:	Kanamycin (25 ug/mL)
Cell Selection:	Neomycin



[View online »](#)

ORF Nucleotide Sequence:

>RR207517 representing NM_001011974
 Red=Cloning site Blue=ORF Green=Tags(s)

TTTTGTAATACGACTCACTATAGGGCGGCCGGAATTCGTGACTGGATCCGGTACCGAGGAGATCTGCC
 GCC**CGGATCGCC**

ATGGAATTTGGGTGTCCGTGGCAGAATGTAAAAGTGTACCTGGAATCACCTCTACCCCCATTCCAAGG
 ACCACTCCTCCCCTTTCTATTCTCCCTCACACAATGGCCTCCTCACTGATCACCACGAGTCTTTAGATAA
 TGATGTCGCCAGAGAGATCCAATACCTAGATGAGGTGCTGGAGGCCAACTGCTGCGATTCTCCGTGGAT
 GGAACCTACAACGGGATCTCTCCCCAGAGCCTGGTGCAGCCATACTGGTAAGCAGCCTTGGCTCACCTG
 CCCACTCAGCCACCAAGGTAGAACCATTGAGAAAGCATCTGGTAGGCAGCTGCCCTCACATCGAACT
 CAGTAGAAGCCCTTCTGACAGCATGGCTGAAGGAGAAAGGCCAATGGACTCCACTGACCAGCCTCAA
 GACATGCTGGGAATAGCCTGCAGGCTCCTGCCAGCCCCAGTTCTCTACCAGCTCCACTGCTCCTCCC
 GAGATGGAGAGTTCACACTCACCACACTGAAGAAGGAGGCCAAGTTTGGCTGCGTGCCTCCACGAGGA
 CAAGAAGCCCTCAAGCTCTTTGAGGAGACGAGCAGCAGAGAAGGAGCAGTTCTGCATCCGAAAAGTGAGG
 CCCTCTGAGGAGATGATAGAGCTGGAGAAGGAGCGGAGGGAATCATTCCGGAGTCAGGCTGTGAAGAAGA
 ATCCTGGCATCGCGGCCAAGTGGTGAATCCTCCCCAGGAAAAAACTATTGAGGAACAGCTGGATGAGGA
 ACATCTGGAGTCACACAGAAAGTACAAGGAGCGCAAAGAGAAAAGGGCACAGCAGGAACAGCTACAGTTA
 CAGCAACAGCAGCAGCAGCAGCTACAACAGTTGCAACAGTTGCAGCAGCAGCAACAGCAGCAGCTGTCCA
 CCTCTCAGCTCTGCACAGCCCCAGCTGCTCATGAACACCTAGATAGCATTGAACACAAAAGGAGGATGT
 CGTCACTGAGCAGATTGATTTCTCAGCTGCACGCAAGCAGTTCCAGCAGATGGAGAATCCAGGCAAACA
 CTGGCCAAAGGCCAGAGCACACCTAGGCTGTTCTCCATCAAGCCTTTCTACAACTCTTGGATCCATCA
 GGCAGCCAAAGAGCAGAAAGCTCTCTGTGTATCTGAGAGCCAGTCTGCAGGAGCAGGAACAGGTAATGCT
 GCCACTCAGGAAAGGAAGGGCCATACAGTGAGCCTTCCAAACGCGGGCCCTTATCCAACTGTGGGCAG
 AGGATGGAGAGTTCACAAGTGCCCGGGCCGCTTACTGTAGTCAAAGATGAAGATCATGGGATTTTGGGA
 CCAGTTTTCAAGATCGGTCAATGTATCTTTGACCCAGGAGGAGCTGGACTCAGGTTTGGATGAGTTGTCA
 GTAAGGTCCCAGGACACCACTGTCTGGAGACTTTGTCCAATGACTTCAGCATGGACAACATAAGTGACA
 GTGGAGCTTCTAATGAGACACCAATGCCCTTCAGGAAACTCTCTGGCTGATTTCTCCCTGCCTCAGAC
 TCCCCAAACAGACAACCCCTCAGAGGGCCGAGAAGGCGTCTCAAAGTCTTCAGTGACCATGGTTTCTAT
 TCTCCTTCTCCACTGGGAGATTCCCCTCCGTTGATGACCCCTTGAATATCAGGCTGGGCTCCTGG
 TGCAGAAATGCCATTCAACAAGCCATAGCCGAGCAGGTGGATAAGGCTGAGGTGCACACCAGCAAAGAGGG
 ATCAGAACAGCAGGAACCTGGAGCAATGGTAGAGGAAGCTGGAAGCCAGGCTCCTGGCTCTGAGAAGCCC
 CAGGGCATGTTTGCACCACCTCAGGTGTCTCTCCCGTTCAAGAGAAAAGGGATGTATTACCAAAGATCC
 TCCCCGGGGAGGACAAGACTCAGGAAAAGGGACCCTCCCAGCCACCCACAGCTGTGCAGCCCAGCGG
 TCCAGTCAACATGAAAGAGACCAGGCTGAAGGAGGGTACTTCAGCAAATACTCAGAGGCAGCCGAGCTG
 AGAAGCACAGCCTCCCTTCTGGCTACTCAAGAGTCTGATGTCATGGTTGGGCCCTTCAAAGTGGGTCAA
 GGAAGCAGCGGACTTTGTCCATGATTGAAGAAGAGATCCGGGCAGCCAGGAAAGGGAAGGAGACTAAA
 GCGGCAAAGACAAGTGAGGCAAAGCACCCCAAGCCCCAGGGCTCAGAACGCCCCATCGCTGCCTTCCAGA
 ACCACCTGCTACAAAAGTCTCCAGGAAAATAGAGAAAAGTCAAACCTCCTCCATCCCCACAACCTGAAG
 GTCCCAGCTTGCAGCCTGACTTAGCCCTGAAGAGGCTGCCGGAGCCAGCGGCCAAGAACCTGATGCA
 GACCCTCATGGAAGACTATGAGACACACAAATCTAAAAGGCGGAGAGAAATGGATGATAGTAGTGTCTG
 GAGGCCACTCGGGTTAATCGAAGGAAGAGTGCTCTGGCCTTGGCTGGGAGGCAGGGATTTATGCCAACC
 AGGAGGAGGAGGACAATGAA

ACGCGTACGCGGGCCGCTCGAGCAGAACTCATCTCAGAAGAGGATCTGGCAGCAAATGATATCCTGGATT
 ACAAGGATGACGACGATAAGGTTTAA

Protein Sequence: >RR207517 representing NM_001011974
Red=Cloning site Green=Tags(s)

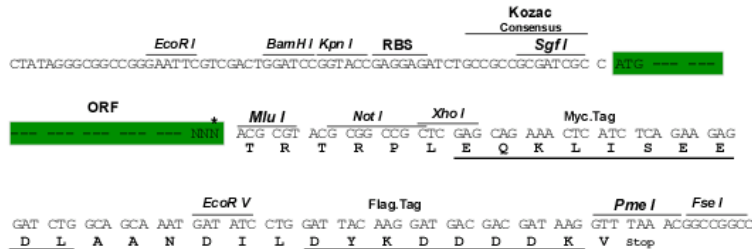
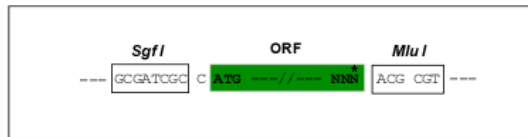
```
MEIGVSVAECKSVPGITSTPHSKDHSSPFYSPSHNGLLDHHESLDNDVAREIQYLDEVLEANCCDSSVD
GTYNGISSPEPGAAILVSSLGSPAHSATKVEPIEKASGRQLPPHIELSRSPSDSMAEGERANGHSTDQPQ
DMLGNSLQAPASPSSTSSHCSRDEGFTLTTLKKEAKFELRAFHEDKKPSKLFEEDEHEKEQFCIRKVR
PSEEMIELEKERRELIRSQAVKKNPGIAAKWVWPPQEKTIIEEQLDEEHLESHRKYKERKEKRAQQEQLQL
QQQQQQQLQQLQQQQQQQLSTSQLCTAPAAHEHLDSEHTKEDVVTEQIDFSAARKQFQQMENSRT
LAKGQSTPRLFSIKPFYKPLGSINSDKPPTILRPATIGGTVEDSSTQAAKEQKALCVSESQSAGAGTGNA
ATQGKEGPYSEPSKRGPLSKLWAEDGEFTSARAVLTVVKDEDHGILDQFSRSVNVSLTQEELDSGLDELS
VRSQDTTVLETLNDFSDNISDSGASNETPNALQENSLADFLPQTPQTDNPSEGREGVSKSFDHGFY
SPSSTLGDSPSVDDPLEYQAGLLVQNAIQQAIAEQVDKAEVHTSKEGSEQQEPGAMVEEAGSQAPGSEKP
QGMFAPPQVSSPVQEKRDVLPKILPGEDKTLREKGPSQPPTAVQPSGPVNMKETRPEGGYFSKYSEAAEL
RSTASLLATQESDVMVGPFKLRSRKQRTLSMIEEEEIRAAQEREEELKRQRVRSQTPSPRAQNAPSLPSR
TTCYKTAPGKIEKVPPSPPTTEGPSLQPDLAPEEAAGAQRPNLMQTLMEDYETHKSKRRERMDDSSVL
EATRVNRRKSALALRWEAGIYANQEEEDNE
```

TRTRPLEQKLISEEDLAANDILDYKDDDDKV

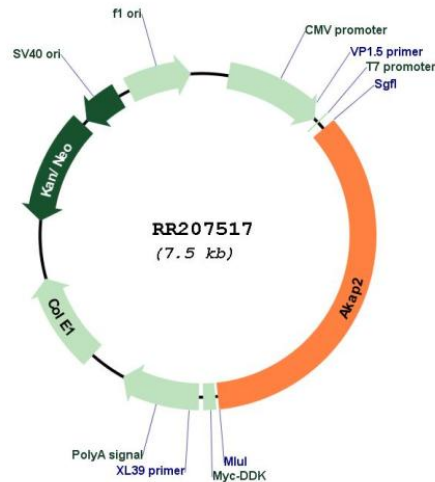
Restriction Sites: SgfI-MluI

Cloning Scheme:

Cloning sites used for ORF Shuttling:



* The last codon before the Stop codon of the ORF

Plasmid Map:


ACCN: NM_001011974

ORF Size: 2610 bp

OTI Disclaimer: The molecular sequence of this clone aligns with the gene accession number as a point of reference only. However, individual transcript sequences of the same gene can differ through naturally occurring variations (e.g. polymorphisms), each with its own valid existence. This clone is substantially in agreement with the reference, but a complete review of all prevailing variants is recommended prior to use. [More info](#)

OTI Annotation: This clone was engineered to express the complete ORF with an expression tag. Expression varies depending on the nature of the gene.

Components: The ORF clone is ion-exchange column purified and shipped in a 2D barcoded Matrix tube containing 10ug of transfection-ready, dried plasmid DNA (reconstitute with 100 ul of water).

Reconstitution Method:

1. Centrifuge at 5,000xg for 5min.
2. Carefully open the tube and add 100ul of sterile water to dissolve the DNA.
3. Close the tube and incubate for 10 minutes at room temperature.
4. Briefly vortex the tube and then do a quick spin (less than 5000xg) to concentrate the liquid at the bottom.
5. Store the suspended plasmid at -20°C. The DNA is stable for at least one year from date of shipping when stored at -20°C.

RefSeq: [NM_001011974.2](#), [NP_001011974.2](#)

RefSeq Size: 6853 bp

RefSeq ORF: 2613 bp

Locus ID: 298024

Cytogenetics: 5q24

MW: 95.9 kDa