

Product datasheet for **RR207514**

Apaf1 (NM_023979) Rat Tagged ORF Clone

Product data:

Product Type: Expression Plasmids
Product Name: Apaf1 (NM_023979) Rat Tagged ORF Clone
Tag: Myc-DDK
Symbol: Apaf1
Vector: pCMV6-Entry (PS100001)
E. coli Selection: Kanamycin (25 ug/mL)
Cell Selection: Neomycin
ORF Nucleotide Sequence: >RR207514 representing NM_023979
Red=Cloning site Blue=ORF Green=Tags(s)

TTTTGTAATACGACTCACTATAGGGCGGCCGGAATTCGTCGACTGGATCCGGTACCGAGGAGATCTGCC
GCC**CGATCGCC**

ATGGATGCAAAGGCCGAAATTGTTTGCTTCAACATAAAGAAGCTCTGGAAAAGGACATCAAACATCCT
ACATCATGGATCACATGATCAGTAATGGCGTCTTAACAGTAGTAGAGGAGGAAAAGGTCAAAGTCAGGC
CACTCAATATCAACGAGCAGCTGCTTTAATTAATAAATGATACTTAATAAAGACAATTATGCCTACATTTCA
TTCTACAACGCTCTACTACACGAGGGCTATAAAGACCTTGCTGGACTTCTGCATAGCGGCCTTCCTCTTG
TGTCTTCTCCAGCGGCAAGGACACAGACGGTGGAAACACTTCATTTGTAAGGACAGTGCTGTGTGAAGG
TGGAGTGCCACAGAGGCCAGTCATCTTTGTCACTAGGAAGAAGCTGGTCACTGCGATTACAGCAGAAGCTC
TGGAAACTGAATGGGAGCCAGGGTGGTCACTATGGAATGGCAGGCTGTGGCAAGTCTGTATTAG
CTGCGGAAGCTGTTGCGGACCATGCCCTCTAGAAGTTGTTTTTCAGGGGGCGTACACTGGGTTCCAT
CGGAAAACAAGACAAGTCCGGCTTCTAATGAAGCTGCAGAATCTTGCACGCGGTTGGTCAAGAAGAG
AGTTTCTCTCAGAGGCTCCGCTTAACATTGAGGAGGCCAAAGACCGTCTCCGTGTTCTGATGCTGCGAA
AACACCAAGGTCTCTGTTGATCTTGGATGACGTTTGGGATCCTTGGGTGTTAAAGGCTTTTGACAACCA
GTGTCAGATTCTTACCACCAGAGATAAGAGTGTACCATTAGTAATGGGTCTAAGTATGTTATC
CCTGTGGAGAGTGGTCTAGGAAAGAGAAGGGACTTAAAATCTTGTCACTTTTTGTTAATATGAAGAAA
AAGATCTGCCAGTGGAGGCTCACAGTATTATAAAGGAGTGCAAAGGCTCTCCTCTCGTCGTCTTTAGT
TGGTGCCTTTTACGGGATTTTCCCAATCGCTGGGCATACTACCTCAGGCAGCTTCAAGTAAGCAGTTT
AAGAGAATAAGGAAATCTTATCTTATGACTACGAGGCTCTGGATGAAGCCATGTCCATAAGTGTGGAGA
TGCTCAGAGAAGACATCAAGGACTACTACACAGACCTCTCCATCCTTCAAGGATGTCAAGGTGCCTAC
GAAGGTGCTGTGTGTTCTCTGGGACTTGGAAACGGAAGAAGTTGAAGACATCTTGCAGGAGTTCGTTAAT
AAGTCTCTTATTCTGTAATCGAATGGGAAGTCATTTTGTATTATTTACACGATCTCAAGTAGATT
TCCTTACAGAGAAGAATCGAAGTCAGTCCAGGATCTGCACAGGAAGATGGTCACTCAATTTCAAGGTA
TACCAGCCGCATACGCTGTCTCCAGGTCAGGAGGACTGCATGTACTGGTACAATTCCTGGCCTATCAT
ATGGCCAGTGCCGGTATGCACAAAGAACTTTGTGCTTTAATGTTTTCCCTGGATTGGATTAAGCAAAAA
CAGAACTGTGCGCCCTGCGCATCTGATTCATGAGTTCGTGGAATATAGGCATATACTGGATGAAAAGGA
TTGTGCAGTCTGTGAGAATTTTCAGGAGTTTTTATCTTTAAACGGACACCTTCTTGGACGACAGCCATT



CCTAACATTGTGCAACTGGGCCTCTGTGAACCAGAGACTTCCGAAGTTTATCAACAAGCAAAGCTGCAGG
CCAAGCAGGAGGTGGATACCGGGCGGCTTTACCTGGAATGGATCAACAAAAAACCATCAAGAATCTGTC
CCGCTTAGTCGTTCCGCCCATACAGACGCCGTGTACCATGCGTGTCTTCTCAGGATGGTCAGAGAATA
GCTTCTTGTGGAGCTGATAAACCTTGCAGGTGTTAAAGCCGAGACAGGAGAGAACTTCTTGACATTA
AAGCTCATGAAGATGAGGTGCTTTGCTGTGCGTTCCTCAGATGACAGTTACATAGCAACCTGCTCAGT
GGATAAGAAAAGTTAAGATTTGGGATTCTGGGACTGGGAAGCTAGTGCACACCTACGAAGAACAACCTCAGAG
CAGGTC AATTGCTGCCATTTACCAATAAGAGCAACCACCTTCTTTGGCCACCGGGTCAAATGACTCCT
TCCTTAAGCTCTGGGATTTGAATCAAAAAGAATGCCGAAATACCATGTTCCGGTCACACGAACTCAGTCAC
CCTGTCAGGTTCTCACCAGACGATGAGCTCTTGCGGAGTTGCTCAGCCGACGGGACTTTAAAGCTTTGG
GATGTGAGATCAGCAAACGAGAAGAAAAGCATTAAATGTGAAGCGCTTCTTCTGAGTTTCAAGAACCCAC
CAGAGGACGTGGAGGTGATCGTGAATGTTGCTCCTGGTCTGCAGATGGCGACAGAATAATAGTGGCAGC
AAAAACAAGTCTCCTTCTTGATATTACTAGTGGCCTGCTGACTGAGATCCACACAGGTCATCAC
AGCACCATCCAGTACTGTGACTTCTCCCTACGACCATTTGGCAGTGATTGCCCTGTCTCAGTACTGTG
TGGAGTTGTGGAACATAGACTCCCGGTAAAGGTGGCTGACTGCAGGGGACATTTAAGTTGGGTCCACGG
TGTGATGTTTTCTCTGATGGCTCCTCGTCTTGACAGCTTCTGATGACCAAACAATAAGGGTCTGGGAG
ACAAGAAAGGTGTGCAAGAACTCTGCCATTGTGTTAAAGCAGGAAATAGATGTCGTGTTTCAAGAAAACG
AAATGATGGTCTTGCAAGTTGACAACATAAGAGGCCTACAACCTATTGCTGGAAAAACAGGCCAGATTGA
TTACCTGCCTGAAGCCAAAGTGAGTTGCTGCTGCCAAGTCCACATCTTGAAGTACGTTGCAATTTGGAGAT
GAAGAGGGAGCCATTAAGATTATAGAATTCAAAACAACAGAGTTTTTCAGCTCTGGGATTGGGCACAAGA
AAGCTGTACGGCACATCCAGTTCACAGCTGATGGGAAGACACTGATTTCAAGTTCTGAAGACTCTGTGAT
TCAGGTGTGGAATTGGCAGACAGAGGAGTATGTATTTCTGCAAGCCCATCAGGAAACAGTAAAGGACTTC
AGACTCCTGAGAGATTCACGATTGCTTTCTGGTCAATTCGATGGAACGGTGAAGGTGTGGAATGTCATTA
CCGGAAGAATTGAAAGAGACTTTACTTGTGATCAGGGCACAGTGCTTTCTGTGCTATCTTCTGTGATGC
CACCAAGTTTTCTACTACCTCAGCTGATAAGACCGCCAAGATCTGGAGTTTTGAATCCCTTCCCTCTT
CATGAGCTGAAGGGCCATAACAGCTGTGTCGCTGCTCTGCCCTTCTCGCTGGATGGCATCCTGTTAGCAA
CTGGAGATGACAATGGAGAAATCAGGATATGGAATGTCTCAGATGGCCAGCTTCTTCAATTTGTGCTCC
GATTTCCATAGAAGAAGGAACGGCTACCCACGGAGGCTGGGTGACTGATGTTTGTCTCTCCTGACAGA
AAAATGCTTGTCTCTGCCGGAGGATACCTTAAGTGGTGAATGTTGTTACTGGGGAGTCTCACAGACCT
TCTACACCAATGGAACAAACCTCAAGAAAATACATGTGTCCTGACTTCAGAACATATGTGACCGTTGA
TAATCTTGGTATTTTATATATTTTACAGGTTTTAGAG

ACGCGTACGCGGCCGCTCGAGCAGAACTCATCTCAGAAGAGGATCTGGCAGCAAATGATATCCTGGATT
ACAAGGATGACGACGATAAGGTTTAA

Protein Sequence: >RR207514 representing NM_023979
 Red=Cloning site Green=Tags(s)

MDAKARNCLLQHKEALEKDIKTSYIMDHMISNGVLTVEEEKVKSQATQYQRAAALIKMILNKDNYAYIS
 FYNALLHEGYKDLAGLLHSGPLVSSSSGKDTDGGNTSFVRTVLCEGGVQRPVIFVTRKKLVSAIQKQL
 WKLNQEPGWVTIYGMAGCGKSVLAAEAVRDHALLEGCFSGGVHWVSIKQDKSGLLMKLQNLCTRLGQEE
 SFSQLPLNIEEAKDRLRVLMLRKHPRSLILDDVWDPWVLKAFDNQCQILLTTRDKSVTDSVMGPKYVI
 PVESGLGKEKGLEILSLFVNMMKEDLPVEAHSIIKECKGSPLVSLVGLLRDFPNRWAYYLRLQNKQF
 KRIRKSSSYDYEALDEAMSISVEMLRDIDYTDLSILQKDKVPTKVLKCVLWDLTEEEVEDILQEFVN
 KSLFLCNRNGKSFCCYLLHDLQVDFLTEKNRSQLQDLHRKMVTQFQRYHQPHLSPGQEDCMYWNFLAYH
 MASAGMHKELCALMFLDWIKAKTELVGPAHLIHEFVEYRHILDEKDCAVCENFQEFSLNGHLLGRQPF
 PNIVQLGLCEPETSEVYQAKLQAKQEVDTGRLYLEWINKKTIKNSRLVVRPHTDAVYHACFSQDGQRI
 ASCGADKTLQVFKAETGEKLLDIKAHEDEVLCFAFSSDDSYIATCSVDKVKIWDSTGKLVHTYEEHSE
 QVNCCHF TNKSNHLLLATGSNDSFLKLWDLNQEKRNTMFGHTNSVTHCRFSPDDELLASCSADGTLKLW
 DVRSANEKKSINVKRFFLSSDPPEDVEVIVKCCSWSADGDRIIVAAKNKVLLLDIHTSGLLTEIHTGHH
 STIQYCDFSPYDHLAVIALSQYCVELWNIDSRVKVADCRGHLVWVHGVMFSPDGSSFLTASDDQTIKRVWE
 TRKVCNKNSAIVLKQEIDVVFQENEMMVLAVDNIRGLQLIAGKTGQIDYLPQAVSCCCLSPHLEYVAFGD
 EEGAIKIIELPNNRVSSGIGHKKAVRHIQFTADGKTLISSSEDSVIQVWNWQTEEYVFLQAHQETVKDF
 RLLRDSRLLSWSFDGTVKVWNVITGRIERDFTCHQGTVLSAIISSDATKFSSTSADKTAKIWSFELPSP
 HELKGNHNSCVRCFAFLDGIILLATGDDNGEIRIWNVSDGQLLHLCAPISIEEGTATHGGWVTDVCFSPDR
 KMLVSAGYLKWWNVVTGESSQTFYNTGTNLKKIHVSPDFRTYVTVNDLGIYLQVLE

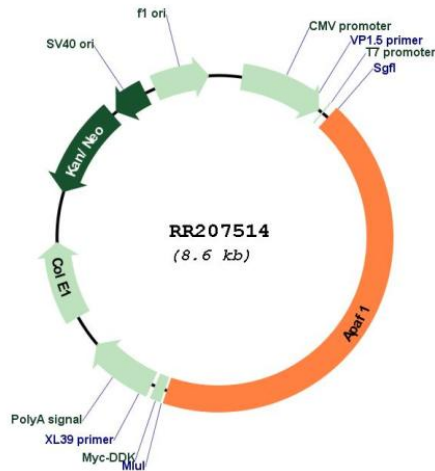
TRTRPLEQKLISEEDLAANDILDYKDDDDKV

Restriction Sites:

SgfI-MluI

Cloning Scheme:



Plasmid Map:


ACCN: NM_023979

ORF Size: 3747 bp

OTI Disclaimer: The molecular sequence of this clone aligns with the gene accession number as a point of reference only. However, individual transcript sequences of the same gene can differ through naturally occurring variations (e.g. polymorphisms), each with its own valid existence. This clone is substantially in agreement with the reference, but a complete review of all prevailing variants is recommended prior to use. [More info](#)

OTI Annotation: This clone was engineered to express the complete ORF with an expression tag. Expression varies depending on the nature of the gene.

Components: The ORF clone is ion-exchange column purified and shipped in a 2D barcoded Matrix tube containing 10ug of transfection-ready, dried plasmid DNA (reconstitute with 100 ul of water).

Reconstitution Method:

1. Centrifuge at 5,000xg for 5min.
2. Carefully open the tube and add 100ul of sterile water to dissolve the DNA.
3. Close the tube and incubate for 10 minutes at room temperature.
4. Briefly vortex the tube and then do a quick spin (less than 5000xg) to concentrate the liquid at the bottom.
5. Store the suspended plasmid at -20°C. The DNA is stable for at least one year from date of shipping when stored at -20°C.

RefSeq: [NM_023979.1](#), [NP_076469.1](#)

RefSeq Size: 6111 bp

RefSeq ORF: 3750 bp

Locus ID: 78963

UniProt ID: [Q9EPV5](#)

Cytogenetics: 7q13
MW: 141.2 kDa
Gene Summary: protein involved in the initiation of apoptosis [RGD, Feb 2006]