

## Product datasheet for RR207475

### Gprasp1 (NM\_134386) Rat Tagged ORF Clone

#### Product data:

Product Type:	Expression Plasmids
Product Name:	Gprasp1 (NM_134386) Rat Tagged ORF Clone
Tag:	Myc-DDK
Symbol:	Gprasp1
Synonyms:	pips
Vector:	pCMV6-Entry (PS100001)
E. coli Selection:	Kanamycin (25 ug/mL)
Cell Selection:	Neomycin
ORF Nucleotide Sequence:	>RR207475 representing NM_134386 Red=Cloning site Blue=ORF Green=Tags(s)

TTTTGTAATACGACTCACTATAGGGCGCCGGAATTCGTCGACTGGATCCGGTACCGAGGAGATCTGCC  
GCCGCGATCGCC

ATGACTGGGGCAGAGGTTGAGCCTGGTGCCAGGCAAAGGCTGAAAATAAGCCTGGGGATGAGAATGCTA  
ATGCTGCTGAAGTAGAGCCTGAAGTTCGGTTAGTGGTCAGACCCAAGGTTAGGACACAAATGATGACTGG  
AGCAAGACCCAAAGTGAAGCCTAAGGGTACCCCTGGAGCAAGGCCTAAAGGTGAAACCAGTTCACCAGGT  
GGGCATATGCTAAATGTAAAGCCAGGTCAATCCCTATTTACGATCTAAGCATGATGCACAAGTCTGGG  
CCCCGAGTAAGTTTCGTGGTGAAGTCCATGTCAAAGATGGGGAAGCAATGTGAGTCAAGTGCAGACTC  
CCCACTGGTCAAGTAAATGATTCTGGGGCGGTTGCTCAAGCTAAGTGCCTGTCTGTAGATAGAGAACTTGT  
AATATGGACACTGAGAGTATCCCAAAAAGGCCAGTTCCTCAGCAAGATTCCAGCCTTCATTTGGCCAG  
AGGAGGGAACCAGTATGGGATCCTGGTACCGTCCCAGGCCTATCCCTAAAGGAGAGGCATATGAGAATTC  
TGATTTCAAATGGGCAGATAAATCCTCAGGAAGTTCCTCCTTCTGGAATAGAGATGAAACCAGTACAAGA  
TTTCGTCTAGGAAAAGCATGAAATCCAATACCAGATTCAGGCACATGGCCAAACAAGAGGCAAAATACCA  
TGCTAGACACAAGAACAACAGGAGTTCTATAAATTTCCAGTCTGATTCTGAAGATGAGTCTGCTAA  
GACTCCCTGGTTCTGGGCCAAAGACAAGCCAAAGTCTGGTCTAGGCCAAAGAAGAGCCCAATACTAGG  
TCCTGGTTTAGGTCTAAGAAAGAAGTCCGTGTTGAATCCACTTCTGGGTCTGAATGTGAAAACCATACAA  
AATCTTTGTTTTGGTCTGGAGAAGAGGCTAAATGTAGGTCTAAACCCAGAGCCAGGAAAGGGTCAATAT  
GAGGGCCAGGCACCAGGCCAAGCGAGAAGCTTATAGTGTGTCACATCTGGATCTGTAGATAAAAAAAG  
AAAGATTCCTGGTTCCTGCCTGAAGAGAAAAGCTAATGCCTTTTCAAAGTCTAAGACAAAGAAGAGCCCA  
GAACCAGAGCAATGCCAAGGGAAGAAGTCAAACTAAGGCCAGAGCAAGTACCAACAAGAAGCCAGGCC  
AGAGGAGGAAGTCTCGTTGGGGCTTGGTCTGGACACCCAGGACAACACTATGGGGGAGAGGATAAGC  
ATGAAGACCCTTGTGTAGAGGAGGAGCCTATTGTTGGAGATTGGTCTGGAGTGAAGAAGAAGCCAGTG  
TGACTCTGAGACCGGTCTAAATCCAGACCAAGGGCTAAGGAGGAACAAGTTAGTAGTTTCTGTTTAGG  
ATCTGAAAGAAGACCAGTATGAAAGTGGGCCAAAGGCTACTTCTAAATCTATGCCAGTAGCTAAGGAT  
GATGAGGTCATTATTGGATCCTGGTTCTGGGCTGATGATGAAGAGATCAGCTTACAGGCTGATGATGAGT



[View online »](#)

CTATTTTTGGATCTTGGTCTGGGGCACTGGTGAGAAAAGCCTTAGATCTGTTGGAGTCAGTTGTGAGAA  
GATGCCCAAGTCTGGGAAAAAGAAGTTACTGATTCTGGTCTGGGCTGGAGAAGTCAACTACTGAGGCT  
GAGATGGAGGAACAGGCCAGTTCAGCATCCACAAAAGGAACAATCTTTGTGCCTTGGTTTTGGTCTGAAA  
AGCAAGCACATATGGATTTAGGAACCGAACCTTGCTCTGACATCATGGCAGGAGCTGAGGAGGAGCCCAT  
AATTGGCCCTGGTCTGGGCTAAAGTAGATAATAGTGTGGAGGCTGAAGTTAATAGTAAGTCTAGCCTT  
GAAGATGAGGAAGAACCATTAGATCACCTTGGTTTGGGGCCAGAGAACAACCAATATGAAGTATGCAG  
CTGGTGTGCGATACAAGCCTATGGCAGAAGCCGAGGAGGCTAACAAAAAGTCGTGTGCTGGGCAAAA  
GCCCTGTTTGTATCCTACCAATAGAGAAAAGCTTGAAATCTACTCTGGGAGAGAAAAGGACACTGTTGAT  
CCATGGCTCTGGTCCAATAATTACCAAGGACCGAGACCATCACAGGGTCTGGCTCTGGCTGCAGAAG  
AGGAAAATATAGATGATGAGACTGGAGAAGAAATCAAACCTACCACTTTAGAGGACAATGTATTCAATTC  
TTGGTCTGGAAAAGAAAATGAAGAAACCGTTGTAGAGGCTCCCAACAGAGAAGAGTCCAAGCCAGAAGCG  
GAAGAGGAAGATATTATTGGCTCTTGGTTTTGGCTGGGGATGAAGACAGGTTTCAGCCAGCTGCTAAGA  
TTAAGGAAGAGAACAAGATAGCACCTGAAGATGAAGATACAGTTGGATCCTGGTCTGGGCAAGGAAGA  
GGCCAGTGTAGAGGCAGTGAAGGGGGTACTTTTGAGTCTGTGTCTGGAATTAAGGAAGAGAAAGCTACT  
GGTCTGTGGTCTGGACTGATAAGGCCAAAATAGGGGCTGGGCCACAGACTGTCGAAACTGGGTCAGAAA  
CTGAAGATGAGGCAATTTTTGAGTCCCTGATCTGGGCCGCAAAAAGGACAGTATGCAAAACAGGAGTAAA  
CCGTGTGTCCAAGCCAAAGGATGAGGGTGAAGGGATTGAGTCTGGCTCTGGTCTGGTGACAAGGCCACT  
ACAGAATCTAAAAGTGTGACGGTCAAGTGTAGTCCAGAAAATGGGAAAGAGTCCATTGTTAAGTTTG  
GGTCAAGAGCAAAGGATGAAGTGATTAACAAGACTGGCAGCGGTGACAATGTAAATTTAGTACAGAAGC  
TGAAAGCATAGTGGGACCTGGTCTGGGAAGGAGATGAAGCTAGCTTTGAATCAAACCTGTTCTGTGA  
TGCAAGGCCGCTTGTGAACCTGAGTCTTCAACTGAACATGAACCTGATCCTTCCCGCAGGCCCTCAGAGCT  
GGGATGAGGCTACTGTTCAAGTTAAGCCTGGTCCATGGGAAAGGCTGGCTTCCCATCTTAAACCCCTT  
CCGATCCCAAAAAGAAGCAGCATCTGTTTGCAGAAATGTTTGGGGAAAGCCTAAGCTTGTGGAAGTT  
GGTACTGAAAGAGAGCCTGAACCCAGTCCCATTTTTCAGTATGATCCTTCTTACCGGTGAGTCCGGGAAA  
TTCGGGAGCATCTTAAGGCCAGGAGAGTGCACAGGCTGAGAAGTGGTCTTGCAACTGCATCCAGTGTGA  
GCTTAGAATTGGTCTGAGGAGTTTGGGAAGTCTTTTAAATGATGGACAGAAATCGTGATCCATTTATC  
CATGAGATATCTAAAATTGCAATGGGCATGAGAGGTGCTTCTCAGTTTACCCGAGATTTTATTGAAACT  
CGGGTGTATCTCACTTATTGAAGCCCTGATGAATTATCCTTCTCCCGAGCGAGGACTGCCTTTTTGGA  
AAACATGATTCAAATGGCTCCAACTTATCCAGACCTAAACATGATCGAGACATATGTGTGCAGGTGTGT  
GAGGATACCTTTGATTATGACTTGGATTCTCTGACCAGTTGTCTGGACTGACAATGATTACACACCTCA  
CTACTACTTTTACTATCACAAAGTGGTTGTCGCTTACTTGGCTGGCTTTTACTACTACTGAATTCGGG  
CAATACCAACAACAGGTTTCATGTTCTGAAACTGCTACTAAATTTGTCTGAAAGCCTTGTATGACAAAA  
CGCCTACTTATTACTGATTCAAGTGTGAGATTTATGGCCCTTTTAAATAGGGAGGACTCAGATGAAAACA  
TTCAAATATTCTTGAATATTTGAGAATATCAGTAAAAATATTCAAAAAGAGGCACTGTTTGTGATGA  
TGAGGAAGAGGAGGAGGAGGAGGCGGTGAATCTTGAACCGCTTATTTTCAGCATTCCGTGAGGCTGAA  
AAATTTGCCAAGGAAGTAAACGTAAAACCGACGATCAGAAATCACCC

ACGCGTACGCGGCCGCTCGAGCAGAACTCATCTCAGAAGAGGATCTGGCAGCAATGATATCCTGGATT  
ACAAGGATGACGACGATAAGGTTTAA

**Protein Sequence:** >RR207475 representing NM\_134386  
 Red=Cloning site Green=Tags(s)

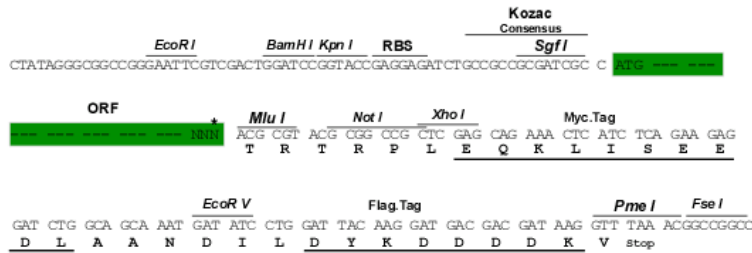
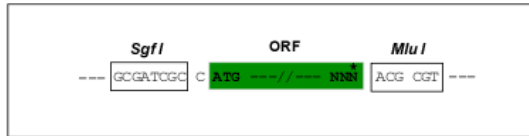
MTGAEVEPGAQAKAENKPGDENANAAEVEPEVPLVVRPKVRTQMMTGARPKVKPKGTPGARPKGETSSPG  
 GAYAKCKPRSIPISRSKHDAQVWAPSKFRGESMSKMGKQCQISAADSPLVNSDSGAVAQAKCLSVDRELA  
 NMDTESIPKKASSPARFQPSFGPEEGTSMGSWYRPRPIPKGEAYENSDFKWADKSSGSSSFWNRDETSTR  
 FRPRKSMKSNTRFRHMAKQEANTMSRHKNKQEFYNISSDSEDESAKTPWFWAKDKPKVWSRPKEEPNTR  
 SWFRSKKEVRVESTSGSECEHTKSLFWSGEEAKCRSKPRARKGVNMRARHQAKREAYSVDVTSVSGVDKNK  
 KDSWFLPEEKANAFSKSKTKKEPRTRAMPREEVTKARASTKQEARPEEEVLVGAWVLDTDQNTMGERIS  
 MKTTCVEEPIVGDWFSEEEASVDSETGLKSRPRAKEEQVSSFCLGSGKKTSMESGPKATSKSMPVAKD  
 DEVIIGSWFWADDEEISLQADDESIFGSWFWGTGEKSLRSVGVSCMKMPKSGEKEVTDSWFWAGEVNT  
 EMEEQASSASTKGTIFVPWFSEKQAHMDLGTEPCSDIMAGAEIEPIIGPWFVAKVDNSVEAEVNSKSSL  
 EDEEPIRSPWFGAREQPNMKYAGVGYKPMAEAEANKKSCVWAKEPCLYPTNRESLSTLGEKEDTVD  
 PWLWSNYPRTETITGSLWAAEEGNIDDETGEIKLPTLEDNVFNSSWKENEEVVEAPNREESKPEA  
 EEEDIIGSWFWAGDEDRFQPAAKIKEENKIAPEDEDTVGSWFWGKEEASVEAVKGGTFESVSGIKEEKAT  
 GSWFWTDKAKIGAGPQT VETGSETEDEAIFESLIWAAKDSMQTG VNRVSKPKDEGEGIESWLWSDGKAT  
 TESKTVTYSSESPENGKESIVKFGSRAKDEVINKTSGDNCCKFSTEAESIVGPWFWEDEASFENPVV  
 CKAACEPESTEHEPDPSRRPQSWDEVTVQFKPGPWGKAGFPLNPFRRPKEAASLFAEMFGGKPKLVEV  
 GTEREPEPQFPFYDPSYRSVREIREHLKARESAQENWSCNCIQCELRI GSEEFEEELLLMMDRNRDPFI  
 HEISKIAMGMRGASQFTRDFIRNSGVISLIEALMNYPPSSRARTAFLENMIQMPTYDNLMIETYVCQVC  
 EDTFDYDLSDSGLTMIHTLTTTFDYHKVVVAYLAGFYLLNSGNTTTRFHVLKLLNLSESLVMTK  
 RLLITDSVSEFMALFNREDSDENIQIILAIFENISKNIQKEALFADDEEEEEEEAVNLEPLISAFREAE  
 KFAKELKRKTTDDQKSP

TRTRPLEQKLISEEDLAANDILDYKDDDDKV

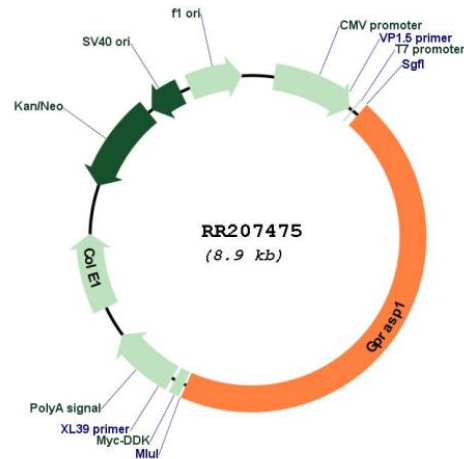
**Restriction Sites:**  
**Cloning Scheme:**

SgfI-MluI

Cloning sites used for ORF Shuttling:



\* The last codon before the Stop codon of the ORF

**Plasmid Map:**


**ACCN:** NM\_134386

**ORF Size:** 4038 bp

**OTI Disclaimer:** The molecular sequence of this clone aligns with the gene accession number as a point of reference only. However, individual transcript sequences of the same gene can differ through naturally occurring variations (e.g. polymorphisms), each with its own valid existence. This clone is substantially in agreement with the reference, but a complete review of all prevailing variants is recommended prior to use. [More info](#)

**OTI Annotation:** This clone was engineered to express the complete ORF with an expression tag. Expression varies depending on the nature of the gene.

**Components:** The ORF clone is ion-exchange column purified and shipped in a 2D barcoded Matrix tube containing 10ug of transfection-ready, dried plasmid DNA (reconstitute with 100 ul of water).

**Reconstitution Method:**

1. Centrifuge at 5,000xg for 5min.
2. Carefully open the tube and add 100ul of sterile water to dissolve the DNA.
3. Close the tube and incubate for 10 minutes at room temperature.
4. Briefly vortex the tube and then do a quick spin (less than 5000xg) to concentrate the liquid at the bottom.
5. Store the suspended plasmid at -20°C. The DNA is stable for at least one year from date of shipping when stored at -20°C.

**RefSeq:** [NM\\_134386.1](#), [NP\\_599213.1](#)

**RefSeq Size:** 6400 bp

**RefSeq ORF:** 4041 bp

**Locus ID:** 171407

**UniProt ID:** [Q920R4](#)

**Cytogenetics:** Xq32

**MW:** 151.3 kDa

**Gene Summary:** may mediate feedback loop or output mechanism of circadian rhythm through interacting with Per1 in the SCN [RGD, Feb 2006]