

Product datasheet for **RR207454**

Omg (NM_001005898) Rat Tagged ORF Clone

Product data:

Product Type:	Expression Plasmids
Product Name:	Omg (NM_001005898) Rat Tagged ORF Clone
Tag:	Myc-DDK
Symbol:	Omg
Synonyms:	MGC105782
Vector:	pCMV6-Entry (PS100001)
E. coli Selection:	Kanamycin (25 ug/mL)
Cell Selection:	Neomycin
ORF Nucleotide Sequence:	>RR207454 representing NM_001005898 Red=Cloning site Blue=ORF Green=Tags(s)

TTTTGTAATACGACTCACTATAGGGCGCCGGGAATTCGTCGACTGGATCCGGTACCGAGGAGATCTGCC
GCC**CGGATCGCC**

ATGGCTTTGATGGAATATCAGATATTGAAATGTCTTCCTGCCTGTTTCATCCTTCTGTTTCTCACGCTG
GCATTTTATGCATTTGCCTCTCCAATGTATATGCACAGAGAGGCACAGGCATGTGGACTGTTCCAGGCAG
AAACCTGACTACATTACCACCTGGACTGCAAGAGAACATTATACATTTAAACCTGTCTTATAACCACTTT
ACTGATCTGCATAACCAGTTAACCCCTTATACCAATCTGAGGACCCTGGATATTTCAAACAACAGGCTTG
AAAGTCTGCCTGCCAGTTACCTCGGTCTCTCTGGAACATGTCTGCTGCTAACAACAACATTAACCTACT
TGACAAATCTGATACTGCTTATCAGTGGAACTTAAATACCTGGATGTTTCTAAGAATATGTTGGAAAAG
GTTGTTCTCATTAAAAATACCTAAGAAGTCTTGAGGTTCTTAACCTCAGCAGTAATAAACTTTGGACAG
TTCCAACCAACATGCCTTCCAACTACATATTGTGGACCTGTCTAATAAATCACTGACACAAATCCTTCC
AGGGACATTAATAAACCTGACAAATCTCACACATCTTACCTGCACAACAATAAATTCACATTCATTCCA
GATCAGTCTTTTGACCAACTCTTGCAAGTGAAGATAAATCTCATAATAACAGGTGGTCATGTGACC
ATACACAAAACATTACTTACTTACTGAAGTGGATGATGGAAACAAAAGCCCATGTGATAGGGATTCCTTG
TTCTAAGCAAGTATCCTCTCTGAAGGAACAGAGCATGTACCCACGCCTCCCGGATTTACTTCAAGCTTA
TTTACTATGAGTGAGATGCAGACAGTGGACACCATTAACCTCTCTGAGTATGGTAACCTCAACCTAAAGTGA
CCAATATACCCAAACAATATCGAGGAAAAGACACCACATTTGGTGTACCCTAAGCAAAGACACCACTTT
TAGTAGCACTGATAGGGCTCTGGAGCCCTACCCAGAAGACACACCACAGAAATGACCAGTTCACGTGAA
GCAGCAGTGCACACTCTAACTATTCACCTCCAGGATGGAATGAGTTCAAATGCAAGCCTCACCAGTGCAG
CAAAATCTCCCGACACCTGTGACCCTCAGCATAAATAGTGGCATGCCAAATAATTTCTCTGAAATGCC
TCAACAGAGCACAAACCTTAACTTACGGAGGGAAGAAACAACCTGCAAATGTAAGACTCAGCCACCTTCC
TCGGCTAGTGCTTGGAAAGTAAATGCCTCACTCCTTTTAAATGCTCAATGCTGTGGTCATGCTGGCAGGC

ACGCGTACGCGGCGGCTCGAGCAGAAACTCATCTCAGAAGAGGATCTGGCAGCAAATGATATCCTGGATT
ACAAGGATGACGACGATAAGGTTTAA



[View online >](#)

Protein Sequence: >RR207454 representing NM_001005898
 Red=Cloning site Green=Tags(s)

MALMEYQILKMSSCLFILLFLTPGILCICPLQCICTERHRHVDCSGRNL TTPPLGQENI IHLNLSYNHF
 TDLHNQLTPYTNLRTLDISNNRLES LPAQLPRSLWNMSAANNNIKLLDKSDTAYQWNLKYLDVSKNMLEK
 VVLIKNLRSLVLEVLNLSNKLWVPTNMP SKLHIVDL SNNSTQILPGTLINLTNLTHLYLHNNKFTFIP
 DQSF DQLLQLQEITLHNNR WSCDHTQNI TYLLK WMMETKAHVIGIPCSKQVSSLKEQSMYPTPPGFTSSL
 FTMSEM QTVDTINSL SMVTQPKV TNIPKQYRGKDTTFGVTL SKDTTF SSTDRALEPYPEDTPTEMTSSRE
 AAAATLTIHLQDGMSSNASL TSAAKSSPAPVTL SITSGMPNPFSEMPQQSTTLNLRREETTANVKTPPS
 SASAWKVNASLLMLNAVVMLAG

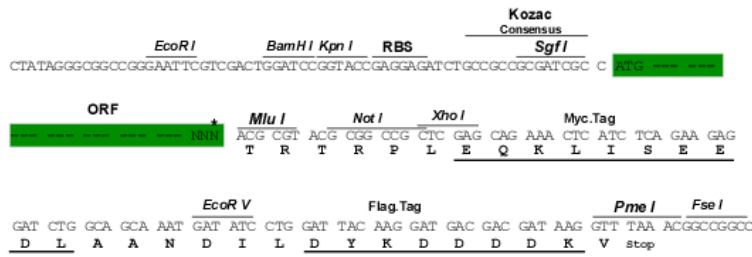
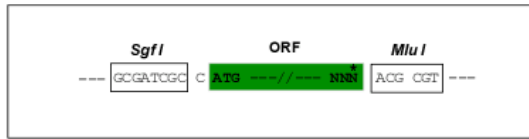
TRTRPLEQKLISEEDLAANDILDYKDDDDKV

Restriction Sites:

SgfI-MluI

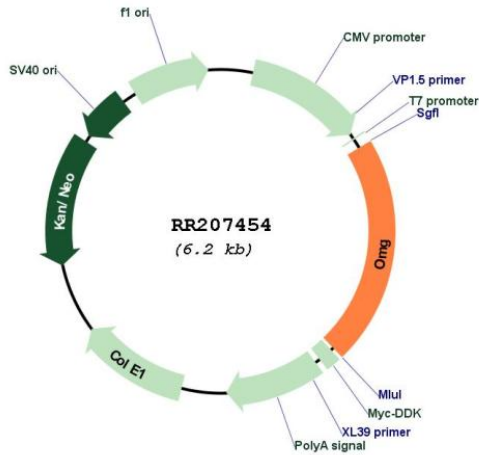
Cloning Scheme:

Cloning sites used for ORF Shuttling:



* The last codon before the Stop codon of the ORF

Plasmid Map:



ACCN: NM_001005898

ORF Size:	1329 bp
OTI Disclaimer:	The molecular sequence of this clone aligns with the gene accession number as a point of reference only. However, individual transcript sequences of the same gene can differ through naturally occurring variations (e.g. polymorphisms), each with its own valid existence. This clone is substantially in agreement with the reference, but a complete review of all prevailing variants is recommended prior to use. More info
OTI Annotation:	This clone was engineered to express the complete ORF with an expression tag. Expression varies depending on the nature of the gene.
Components:	The ORF clone is ion-exchange column purified and shipped in a 2D barcoded Matrix tube containing 10ug of transfection-ready, dried plasmid DNA (reconstitute with 100 ul of water).
Reconstitution Method:	<ol style="list-style-type: none">1. Centrifuge at 5,000xg for 5min.2. Carefully open the tube and add 100ul of sterile water to dissolve the DNA.3. Close the tube and incubate for 10 minutes at room temperature.4. Briefly vortex the tube and then do a quick spin (less than 5000xg) to concentrate the liquid at the bottom.5. Store the suspended plasmid at -20°C. The DNA is stable for at least one year from date of shipping when stored at -20°C.
RefSeq:	NM_001005898.3 , NP_001005898.3
RefSeq Size:	1855 bp
RefSeq ORF:	1332 bp
Locus ID:	450224
Cytogenetics:	10q25
MW:	49.6 kDa