

Product datasheet for **RR207382**

Gtf2a1 (NM_022208) Rat Tagged ORF Clone

Product data:

Product Type: Expression Plasmids
 Product Name: Gtf2a1 (NM_022208) Rat Tagged ORF Clone
 Tag: Myc-DDK
 Symbol: Gtf2a1
 Synonyms: Tf2a; Tflla
 Mammalian Cell Selection: Neomycin
 Vector: pCMV6-Entry (PS100001)
 E. coli Selection: Kanamycin (25 ug/mL)
 ORF Nucleotide Sequence: >RR207382 representing NM_022208
 Red=Cloning site Blue=ORF Green=Tags(s)

TTTTGTAATACGACTCACTATAGGGCGCCGGGAATTCGTCGACTGGATCCGGTACCGAGGAGATCTGCC
 GCC**CGGATCGCC**

ATGGCGAACTCGGCAAACACAAACACCGTGCCTAAATTGTATAGATCTGTGATTGAAGATGTTATTAATG
 ATGTCCGAGACATTTTTCTGGATGATGGAGTGGATGAACAGGTCTGATGGAACTAAAACTTTGTGGGA
 GAATAAATAATGCAGTCTAGGGCAGTAGATGGATTTTCATTGAGAAGAACAGCAGCTTTTGTGCAAGTT
 CAGCAGCAGCACCAGCCCAGCAGCAGCAGCATACCACCACCACCACCAGCAGGCGCAACCTCAGC
 AAACGGTACCTCAGCAAGCACAGACCCAGCAGGTTCTTATTCCTGCGTCACAGCAAGCTACAGCACCACA
 AGTTATTGTTCTGATTCTAAGTTGATACAACATATGAATGCATCAAGTATTACGAGTGTGCTGCTACA
 GCTGCTACCTTGGCGCTCCCTGCAGGCGTGACTCCTGTTGAGCAGATACTAACAAATTCAGGCCAGCTGC
 TTCAGGTAGTCAGAGCAGCCAATGGTGCCCAATATATCTTTCAGCCTCAGCAGTCAGTTGTTCTACAACA
 ACAAGTTATACCACAAATGCAGCCTGGTGGAGTACAAGCGCCTGTTATCCAGCAGGTCTAGCCCCACTT
 CCTGGAGGGATTTACCACAGACCGGTGTCATCATCCAGCCACAGCAAATCTTATTTACAGGGAATAAGA
 CTCAGGTCATTCTACGACAGTGGCAGCGCCACACCAGCACAAGCACAGATCCCTGCAGCTGGACAGCA
 GCAGCCACAGGCCAGCCTGCTCAGCAGCAGGCTCCATTGGTGTGCAAGTTGACGGAACAGGGGACACA
 TCTTCTGAGGAAGATGAAGACGAAGAAGAAGACTATGATGATGATGAAGGAAGATAAAGAGAAGATG
 GAGCCGAAGATGGCAGGTGGAAGAAGAGCCCTCAACAGCGAAGATGATGTAAGTATGAGGAAGGGCA
 GGAATCTTTGACACAGAAAATGTTGTTGTATGCCAGTATGATAAGATACACAGAAGTAAAAATAAATGG
 AAATTTTCACTCAAGGATGGCATTATGAATCTTAATGGAAGAGATTATATATTTTCCAAAGCCATTGGAG
 ATGCAGAGTGG

ACGCGTACGCGGCCGCTCGAGCAGAAACTCATCTCAGAAGAGGATCTGGCAGCAAATGATATCCTGGATT
 ACAAGGATGACGACGATAAGGTTTAA



[View online »](#)

Protein Sequence: >RR207382 representing NM_022208
 Red=Cloning site Green=Tags(s)

MANSANTNTVPKLYRSVIEDVINDVRDIFLDDGVDEQVLMELKTLWENKLMQSRVAVDGFHSEEQQLLQV
 QQQHQPQQQHHHHHHHQAQPQQTVPQQAQTQQLIPASQATAPQVI VPSKLIQHMNASSITSAAT
 AATLALPAGVTPVQQIL TNSGQLLQVVRANGAQYIFQPQSVVLQQQVIPQMPPGGVQAPVIQQVLAPL
 PGGISPQTGVIIQPQQILFTGNKTQVIPTTVAAPTQAQAQIPAAGQQPQAQPAQQQAPLVLQVDGTGDT
 SSEEDEEEEDYDDDEEEDKEKDAEDGQVEEEPLNSEDDVSDDEEGQELFDTENVVVCQYDKIHRSKNKW
 KFHLKDGIMNLNGRDYIFSKAIGDAEW

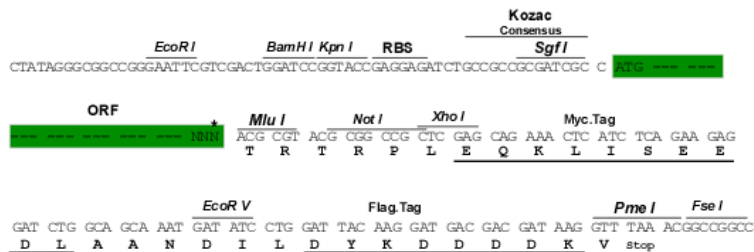
TRTRPLEQKLISEEDLAANDILDYKDDDDKV

Restriction Sites:

Sgfl-MluI

Cloning Scheme:

Cloning sites used for ORF Shuttling:



* The last codon before the Stop codon of the ORF

ACCN: NM_022208

ORF Size: 1131 bp

OTI Disclaimer: The molecular sequence of this clone aligns with the gene accession number as a point of reference only. However, individual transcript sequences of the same gene can differ through naturally occurring variations (e.g. polymorphisms), each with its own valid existence. This clone is substantially in agreement with the reference, but a complete review of all prevailing variants is recommended prior to use. [More info](#)

OTI Annotation: This clone was engineered to express the complete ORF with an expression tag. Expression varies depending on the nature of the gene.

Components: The ORF clone is ion-exchange column purified and shipped in a 2D barcoded Matrix tube containing 10ug of transfection-ready, dried plasmid DNA (reconstitute with 100 ul of water).

Reconstitution Method:

1. Centrifuge at 5,000xg for 5min.
2. Carefully open the tube and add 100ul of sterile water to dissolve the DNA.
3. Close the tube and incubate for 10 minutes at room temperature.
4. Briefly vortex the tube and then do a quick spin (less than 5000xg) to concentrate the liquid at the bottom.
5. Store the suspended plasmid at -20°C. The DNA is stable for at least one year from date of shipping when stored at -20°C.

RefSeq: [NM_022208.1](#), [NP_071544.1](#)

RefSeq Size: 1134 bp

RefSeq ORF: 1134 bp

Locus ID: 83830

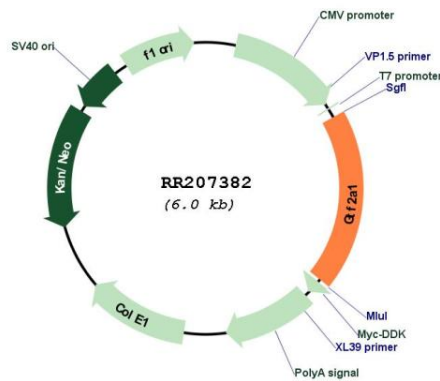
UniProt ID: [O08949](#)

Cytogenetics: 6q31

MW: 41.6 kDa

Gene Summary: large subunit of transcription factor 2a; human homolog interacts with the TATA-binding protein to act early during preinitiation complex formation [RGD, Feb 2006]

Product images:



Circular map for RR207382