

Product datasheet for **RR207381**

Rgl2 (NM_212547) Rat Tagged ORF Clone

Product data:

Product Type:	Expression Plasmids
Product Name:	Rgl2 (NM_212547) Rat Tagged ORF Clone
Tag:	Myc-DDK
Symbol:	Rgl2
Synonyms:	Ke1.5; Rab21
Mammalian Cell Selection:	Neomycin
Vector:	pCMV6-Entry (PS100001)
E. coli Selection:	Kanamycin (25 ug/mL)



[View online »](#)

ORF Nucleotide Sequence:

>RR207381 representing NM_212547
 Red=Cloning site Blue=ORF Green=Tags(s)

TTTTGTAATACGACTCACTATAGGGCGGCCGGGAATTCGTCGACTGGATCCGGTACCGAGGAGATCTGCC
 GCC**CGGATCGCC**

ATGCTCCCGCGGCCCTGCGGCTGCTTTTGGACACGAACCCCCCGGGGAGTCGTGTTGAGCAGCTTCC
 GGAGCCGGGACCCGAAGAGGGTGGGGACCCAGGTGGCCGGGCCGTGGCGGGGGCAGGAGGAAGAGGA
 GGAGGAAGAAGAAGAGGCTTCTGTGTCAATCTGGGATGAGGAGGAGGATGGTGCGACCTTTACTGTCACA
 AGCCGCCAGTATAGGCCTCTTGATCCCTCGGCCCTTGCTCCGCTCGCTCCTCCGAAGGCTCCGTG
 CTGGTACTCTGGAGGCCCTGGTCAGACCTCTTGGATGCCAGGACATCAGGGGCTGACATGACGTTTAC
 TCCAGCCTTGCTGGCCACCCACCGGCCCTTCACTCCACTCCTGCCCTGTTTGGGCTTGTGGCTGACAGG
 CTGGAAGCCCTCGAATCGCATCCTCCGGCGAGCTAGAGAGGACCACAGGGGTAGCCATCTCTGTACTTT
 CAACCTGGCTGGCCTCTACCTGAGGATTTTGGCTCTGAGGTCAAGGTCACCTTGACCGGCTTGAGAG
 CTTCTTGCTTCGACAGGGTATGCAGCACGGGAGGGTGTGTGGGGGGCAGTGCTGACCTCATCCGAAC
 CTCGGGGCCCGGTGGACCCCGGGCCCGACCTTCTAAGCCCTGGCCCTTCTGACGATCCCTCTG
 CTGACCCACGGATGTCCTGGTGTCTCGCTGACCCTTGCCGAACAGCTGACCTGCTTGTATGCGGA
 GCTGTTTCTCAGTCTGATCCCCTCTCAGTGTGGGAGGCCTATGGGGTACAGAGACCGCCAGGACAT
 TCTCATCTCTGCCGCTGTCCGAGCTACCGTCACGCAGTTCAACAAGGTGGCGGGGCAGTAGTTAGCT
 CTGTCTGGGGGCCACCCCAACTGGAGAGGGGCCAAGAGAGGTGACTGTGAGGCCACTCCGACCCCA
 GAGGGCCCGGCTCCTGGAGAAGTGGATCCGTGTGGCTGAGGAATGCCGCTGCTTAGGAACTTCTCTCA
 GTGTATGCTGTTGTGCCGCTGCAGTCCAGCCCTATCCATAGGCTTCGGCGGCCTGGGGGAGACAA
 CCAGGGACAGCCTCAGAATCTTTCCAGCCTGTGCAGATTTTCTCAGAGGAGGATAATTTCCAGAG
 CAGAGAGCTCCTCATGCAGGAAGTAAAGCTGCAGCCCTGTGGAGCCACACTCCAAGAAGGCCCAAGG
 TCTGGCTCCAGGGTGGGGTGTGGTCCGTACCTGGGAACCTTCTGAAGGATCTCGTGTGCTGGATG
 CAGCCTCAAGGATGAGCTGGAGAATGGCTACATCAATTTGACAAGCGGAGGAAGGAGTTTGTGTCT
 TTCTGAGCTGCTGCGCTCCAGAACGAATGTCGTGGCTATGACCTCCGACCTAACCTGATATCCAGCAA
 TGGCTCCAGGGCTCCAGCCATTAAGTGAAGCTCAGAGTACCGTGTATCCTGTGAAGTGGAGCCATCTG
 GTACCATGATCCCGCGGCAAGGACGCTTCGGCCAGCACTAGTCATCACACAGTGGACGGAAGTTCT
 GGGCTCCGTTGGAGGCCCACTCCGCTTGTCTGGGATCGGCCACTGTGGGGGAGATGAGGTGCCA
 GGAACCCCGGCCCTCTGCTGACTCGCCTCGCCAGCACATGAAGTGGCCGTCTGTCTCATCTCTGGACT
 CTGCCCTGAAAGCAGCCCTCCCTGCACAGCCCTGCTGACCCTGGCCACCTCTCTCTCCAGCCTCCTC
 CCCTAGGCCTTCTCGGGTCAACCAGCCTCAGCCTCCTGCGGGTCTCCGTTGAGTGGGGGCACAGGAGAG
 GGGGCTCTAGGAGTGTGGATGTGGGGCGGGGTATCTGGCCAGGGTCTCTGATTGCCGAATCATCC
 GAGTCCAGATGGAGCTTGGGGAGGATGGCAGCGTCTACAAGAGCATCCTGGTGACAAGCCAGGACAAGGC
 CCCAAGTGTTATTAGCCGCGTCTTAAGAAAAACAATCGTGATTCTGCTGTGGCTTCAGAGTTTGTAGCTG
 GTGCAGCTGCTACCGGGGATCGAGAGCTGACCATCCACACTCGGCTAACGCTTCTATGCCATGGACG
 GCGCATCTCAGACTTCTCTCGGCGAGCGGAGAAGACCATCTGCTGCCACCTCGGGTTCTCACAGCGG
 CCCCTCGGCTCAGGAATCCTCCGAGCGAGGGAGGGGGCTCTTTCCAGGATCAAGGCCACAGGG
 AGGAAGATTGCAGGGCACTGTTC

ACGCGTACGCGGCCGCTCGAGCAGAACTCATCTCAGAAGAGGATCTGGCAGCAAATGATATCTGGATT
 ACAAGGATGACGACGATAAGGTTTAA

Protein Sequence: >RR207381 representing NM_212547
 Red=Cloning site Green=Tags(s)

MLPRPLRLLLDTNPPGGVVLSSFRRSDPEEGDPGGRAVGGGQEEEEEEEEASVSIWDEEEDGATFTVT
 SRQYRPLDPSAPLPPRSSRRLRAGTLEALVRHLLDARTSGADMTFTPALLATHRAFTSTPALFGLVADR
 LEALESHPPELERTTGVAISVLSTWLASHPEDFGSEVKGQLDRLESFLLRTGYAAREGVVGGSSADLIRN
 LRARVDPRAPDLPKPLALPDDSPADPTDVLVFLADHLAEQLTLLDAELFSLIPSQCLGGLWGHDRDPGH
 SHLCPSVRATVTQFNKVAGAVVSSVLGATPTGEGPREVTVRPLRPPQARLLEKWIRVAEECRLLRNFSS
 VYAVVSALQSSPIHRLRAAWGETTRDSLRFSSLCQIFSEEDNYSQSRELLMQEVKLQPPVEPHSKKAPR
 SGRSGGGVVPYLGTFKDLVMLDAASKDELENGYINFDKRRKEFAVSELLRLQNECRGYDLRPNPDIQQ
 WLQGLQPLTEAQSHRVSCEVEPSGTIDSPAARTLRPALVITQWTEVLGSVGGPTPLVSWDRPTVGGDEVP
 GTPAPLLTRLAQHMKWPSVSSLDLSSPSLHSPADPGHLSPASSPRPSRGHRRSASCSPSSGGTGE
 GASRSAGCGGGVSGPGSSDCRIIRVQMELEGDSVYKILVTSQDKAPSVISRVLKKNNRDSAVASEFEL
 VQLLPGDRELTIPHSANVFYAMDGASHDFLLRQRRRPSAATSGSHSGPSASGTPPSEGGGGSFPRIKATG
 RKIARALF

TRTRPLEQKLISEEDLAANDILDYKDDDDKV

Restriction Sites: Sgfl-MluI

Reconstitution Method:

1. Centrifuge at 5,000xg for 5min.
2. Carefully open the tube and add 100ul of sterile water to dissolve the DNA.
3. Close the tube and incubate for 10 minutes at room temperature.
4. Briefly vortex the tube and then do a quick spin (less than 5000xg) to concentrate the liquid at the bottom.
5. Store the suspended plasmid at -20°C. The DNA is stable for at least one year from date of shipping when stored at -20°C.

RefSeq: [NM_212547.3](#), [NP_997712.1](#)

RefSeq Size: 2894 bp

RefSeq ORF: 2337 bp

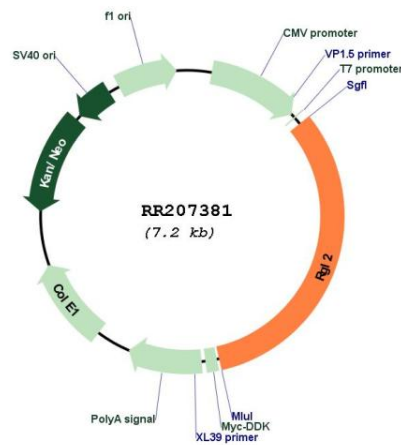
Locus ID: 294283

Cytogenetics: 20p12

MW: 83.7 kDa

Gene Summary: has similarity to members of the RAS oncogene family [RGD, Feb 2006]

Product images:



Circular map for RR207381