

## Product datasheet for **RR207305**

### Emid1 (NM\_001109467) Rat Tagged ORF Clone

#### Product data:

Product Type: Expression Plasmids  
Product Name: Emid1 (NM\_001109467) Rat Tagged ORF Clone  
Tag: Myc-DDK  
Symbol: Emid1  
Synonyms: RGD1565846  
Vector: pCMV6-Entry (PS100001)  
E. coli Selection: Kanamycin (25 ug/mL)  
Cell Selection: Neomycin  
ORF Nucleotide Sequence: >RR207305 representing NM\_001109467  
Red=Cloning site Blue=ORF Green=Tags(s)

TTTTGTAATACGACTCACTATAGGGCGCCGGAATTCGTCGACTGGATCCGGTACCGAGGAGATCTGCC  
GCC**CGATCGCC**

ATGGTCCCAGCATTACAAATCCCAGCTCTATGCCAGGTGGCTAACTCCAGGCAGGAAGTGGTCTCT  
ACGTGGTGACCCGACCGTCTCCTGTCTGTGCAGAATGGCACCTACCTCCAGCGAGTGTGCAGAGCTG  
CCCGTGGCCCGTGGGCTGCCCTGGGAACAGCTACAGAACCGTGGTGCACCCATGTACAAAGTGATGTAC  
AAGACAGTGACCGCTCGAGAATGGAGGTGCTGCCAGGACACTCGGGGGTGACCTGTGAGGAAGGCTCCC  
CTGGCTTCTGGAGCCCACGTGGTCAGGCAGCAGCATGCCGGGATGACAGTGAGGCCACAGCCTTCTC  
AGGTTGTCTAACTGCAGCAAAGTGTCTGAGCTGACAGAGAGGCTGAGGGCGCTGGAGGCCAAGGGAGAA  
CCTGGCCCAAAGGAGACCCTGGTGAGAAGAGTCACTGGGGGAGGGGTTGCACCAACTACGCGAGGCTT  
TGAAGATTTTAGCTGAGAGGGTTTTAATCTTGAAACAATGATTGGGCTCTATGAACCAGACTTGGGATC  
CGGGCAGGCCCTGATGGCACAGGTACCCCGAGCCTCTTCGAGGCAAGAGGGGAGGACCCCAACCAAC  
TACCAGATCATCACCCAGGAGACGCAACGAGAGGAGC

**ACGCGT**ACGCGCGCGCTCGAGCAGAACTCATCTCAGAAGAGGATCTGGCAGCAAATGATATCCTGGATT  
ACAAGGATGACGACGATAAGGTTTAA



[View online »](#)

**Protein Sequence:** >RR207305 representing NM\_001109467  
 Red=Cloning site Green=Tags(s)

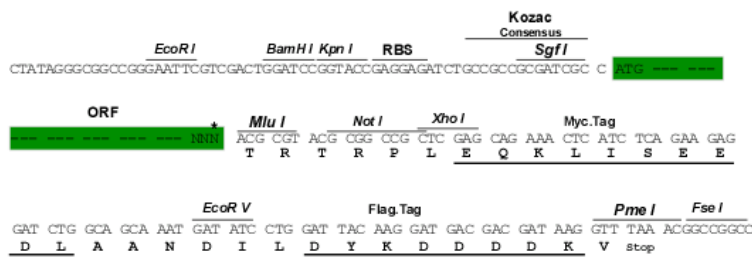
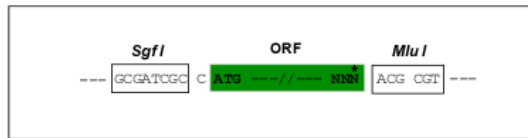
MVPAFTNPSSMPRWLTPGRNWCSYVVTRTVSCHVQNGTYLQRVLQSCPWPVGCPCGNSYRTVVVRPMYKVMY  
 KTVTAREWRCCPGHSGVTCEEGSPGFLEPTWSGSSMRMTVRPTAFSGCLNCSKVSLETERLRALEAKGE  
 PGPKGDPEKSHWGEGLHQLREALKILAERVLILETMIGLYEPDLGSGAGPDGTGTPSLLRGKRGGHPTN  
 YQIITPRRRNERS

TRTRPLEQKLISEEDLAANDILDYKDDDDKV

**Restriction Sites:** Sgfl-MluI

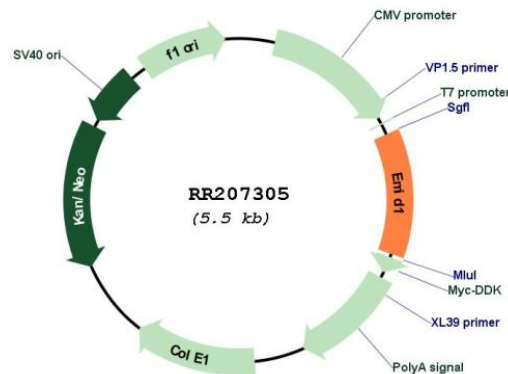
**Cloning Scheme:**

Cloning sites used for ORF Shuttling:



\* The last codon before the Stop codon of the ORF

**Plasmid Map:**



**ACCN:** NM\_001109467

**ORF Size:** 669 bp

<b>OTI Disclaimer:</b>	The molecular sequence of this clone aligns with the gene accession number as a point of reference only. However, individual transcript sequences of the same gene can differ through naturally occurring variations (e.g. polymorphisms), each with its own valid existence. This clone is substantially in agreement with the reference, but a complete review of all prevailing variants is recommended prior to use. <a href="#">More info</a>
<b>OTI Annotation:</b>	This clone was engineered to express the complete ORF with an expression tag. Expression varies depending on the nature of the gene.
<b>Components:</b>	The ORF clone is ion-exchange column purified and shipped in a 2D barcoded Matrix tube containing 10ug of transfection-ready, dried plasmid DNA (reconstitute with 100 ul of water).
<b>Reconstitution Method:</b>	<ol style="list-style-type: none"><li>1. Centrifuge at 5,000xg for 5min.</li><li>2. Carefully open the tube and add 100ul of sterile water to dissolve the DNA.</li><li>3. Close the tube and incubate for 10 minutes at room temperature.</li><li>4. Briefly vortex the tube and then do a quick spin (less than 5000xg) to concentrate the liquid at the bottom.</li><li>5. Store the suspended plasmid at -20°C. The DNA is stable for at least one year from date of shipping when stored at -20°C.</li></ol>
<b>RefSeq:</b>	<a href="#">NM_001109467.1</a> , <a href="#">NP_001102937.1</a>
<b>RefSeq Size:</b>	1601 bp
<b>RefSeq ORF:</b>	672 bp
<b>Locus ID:</b>	685462
<b>Cytogenetics:</b>	14q21
<b>MW:</b>	24.7 kDa