

Product datasheet for **RR207302**

Kcnj3 (NM_031610) Rat Tagged ORF Clone

Product data:

Product Type:	Expression Plasmids
Product Name:	Kcnj3 (NM_031610) Rat Tagged ORF Clone
Tag:	Myc-DDK
Symbol:	Kcnj3
Mammalian Cell Selection:	Neomycin
Vector:	pCMV6-Entry (PS100001)
E. coli Selection:	Kanamycin (25 ug/mL)



[View online »](#)

ORF Nucleotide Sequence:

>RR207302 representing NM_031610
 Red=Cloning site Blue=ORF Green=Tags(s)

TTTTGTAATACGACTCACTATAGGGCGGCCGGGAATTCGTCGACTGGATCCGGTACCGAGGAGATCTGCC
 GCC**GCGATCGCC**

ATGTCTGCACTCCGAAGGAAATTTGGGGACGATTACCAGGTAGTGACCACTTCGTCACGCGTTCCGGCT
 TGCAAGCCAGGGCCAGGACAGGGCCACAGCAGCAGCTTGACCCAAGAAGAAACGGCAGCGGTTTCGT
 GGACAAGAACGGTCGGTCAATGTGACGACCGCAACCTGGGCAGCGAGACCAGTCGCTACCTTTCCGAC
 CTCTTCACTACCCTGGTGGATCTCAAGTGGCGTTGGAACCTCTTTATCTTCATCCTCACCTACACCGTGG
 CCTGGCTCTTCATGGCGTCCATGTGGTGGGTGATCGCTTATACCCGGGGCAGCTGAACAAAGCCCATGT
 CGGCAACTACACTCCCTGTGTGGCAATGTCTATAACTCCCCTCGCTTCCCTTTCTTCATCGAGACC
 GAGGCCACCATCGGCTATGGCTACCGCTACATCACCGACAAGTCCCGGAGGGCATCATCTTTTCCTTT
 TCCAGTCCATCCTGGCTCCATCGTGGACGCTTTCCTCATCGGCTGCATGTTTCATCAAGATGTCCCAGCC
 CAAAAAGCGCGCCGAGACCCTCATGTTTAGCGAGCATGCGGTTATTTCCATGAGGGACGGAAAACACTCACT
 CTATGTTCCGGGTGGGCAACCTGCGCAACAGCCACATGGTCTCCGCGCAGATCCGCTGCAAGCTGCTCA
 AATCTCGGCAGACACCTGAGGGTGAATTTCTACCCCTTGACCAACTTGAAGTGGATGTAGGTTTTAGTAC
 AGGGGCAGATCAACTTTTTCTTGTGTCCCTCTCACCATTTGCCACGTGATTGATGCCAAAAGCCCTTT
 TATGACCTATCCCAGCGAAGCATGCAAACCTGAACAGTTCGAGGTGGTTCGTCATCCTGGAAGGCATCGTGG
 AAACCACAGGGATGACTTGTCAAGCTCGAACATCATACACCGAAGATGAAGTCTTTGGGGTCATCGTTT
 TTTCCCTGTAATTTCTTTAGAAGAAGGATCTTTAAAGTCGATTACTCCCAGTCCATGCAACCTTTGAA
 GTCCCCACCCCTCCGTACAGTGTGAAAGAGCAGGAAGAAATGCTTCTCATGTCTTCCCTTTAATAGCAC
 CAGCCATAACCAACAGCAAAGAAAGACACAATTTCTGGAGTGTCTAGATGGACTAGATGACATTAAGCAG
 AAAACTTCCATCGAAGCTGCAGAAAATTACGGGGAGAGAAGACTTCCCAAAAAACTCCTGAGGATGAGT
 TCTACAATTCAGAAAAAGCCTATAGTTTGGGTGATTTGCCCATGAAACTCCAACGAATAAGTTCGGTTC
 CTGGCAACTCTGAAGAAAAACTGGTATCTAAAACCACCAAGATGTTATCAGATCCCATGAGCCAGTCTGT
 GGCCGATTTGCCACCGAAGCTTCAAAGATGGCTGGAGGACCTACCAGGATGGAAGGGAATCTTCCAGCC
 AAATAAGAAAAATGAAGTCTGACCGCTTACA

ACGCGTACGCGGCCGCTCGAGCAGAAACTCATCTCAGAAGAGGATCTGGCAGCAAATGATATCCTGGATT
 ACAAGGATGACGACGATAAGGTTTAA

Protein Sequence:

>RR207302 representing NM_031610
 Red=Cloning site Green=Tags(s)

MSALRRKFGDDYQVVTSSSGSLQPQGPQGPQQQLVPKKRQRFVDKNGRCNVQHGNLGETSRYLSD
 LFTTLVDLKWRWNLFIILTYTVAWLFMASMWWVIAAYTRGDLNKAHVGNYPVCVANVYVNFSAFLFFIET
 EATIGYGYRYITDKPEGIILFLFQSILGSIVDAFLIGCMFIKMSQPKKRAETLMFSEHAVISMRDGKLT
 LMFVRVGNLRNSHMVSAQIRCKLLSRQTPGEFLPLDQLELDVGFSTGADQLFLVSPLTICHVIDAKSPF
 YDLSQRSMQTEQFEVVILEGIVETTGMTQARTSYTEDEVLWGHFRFPVISLEEGLFKVDYSQFHATFE
 VPTPPYSVKEQEEMLLMSSPLIAPAITSKERHNSVECLDGLDDISTKLPKSLQKITGREDFPKLLRMS
 STTSEKAYSLGDLPMKLRQRISSVPGNSEEKLVSKTTKMLSDPMSQSVADLPPKLQKMAAGGPTRMENLPA
 KLRKMNSDRFT

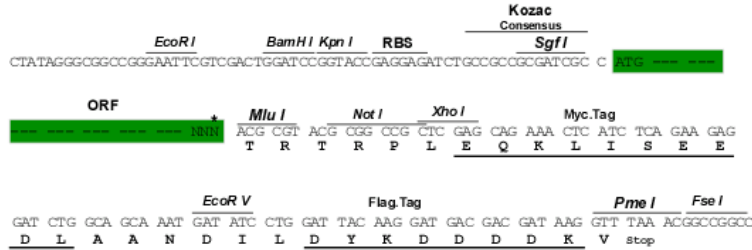
TRTRPLEQKLISEEDLAANDILDYKDDDDKV

Restriction Sites:

Sgfl-Mlul

Cloning Scheme:

Cloning sites used for ORF Shutting:


ACCN: NM_031610

ORF Size: 1503 bp

OTI Disclaimer: The molecular sequence of this clone aligns with the gene accession number as a point of reference only. However, individual transcript sequences of the same gene can differ through naturally occurring variations (e.g. polymorphisms), each with its own valid existence. This clone is substantially in agreement with the reference, but a complete review of all prevailing variants is recommended prior to use. [More info](#)
OTI Annotation: This clone was engineered to express the complete ORF with an expression tag. Expression varies depending on the nature of the gene.

Components: The ORF clone is ion-exchange column purified and shipped in a 2D barcoded Matrix tube containing 10ug of transfection-ready, dried plasmid DNA (reconstitute with 100 ul of water).

Reconstitution Method:

1. Centrifuge at 5,000xg for 5min.
2. Carefully open the tube and add 100ul of sterile water to dissolve the DNA.
3. Close the tube and incubate for 10 minutes at room temperature.
4. Briefly vortex the tube and then do a quick spin (less than 5000xg) to concentrate the liquid at the bottom.
5. Store the suspended plasmid at -20°C. The DNA is stable for at least one year from date of shipping when stored at -20°C.

RefSeq: [NM_031610.3](#), [NP_113798.1](#)
RefSeq Size: 1827 bp

RefSeq ORF: 1506 bp

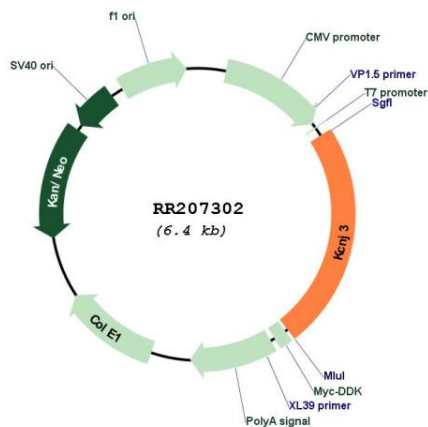
Locus ID: 50599

UniProt ID: [P63251](#)
Cytogenetics: 3q21

MW: 56.6 kDa

Gene Summary: inwardly-rectifying potassium channel; gated by G-protein beta gamma-subunits [RGD, Feb 2006]

Product images:



Circular map for RR207302