

Product datasheet for **RR207264**

Zbtb7a (NM_054002) Rat Tagged ORF Clone

Product data:

Product Type:	Expression Plasmids
Product Name:	Zbtb7a (NM_054002) Rat Tagged ORF Clone
Tag:	Myc-DDK
Symbol:	Zbtb7a
Synonyms:	Lrf; OCZF; Zbtb7
Vector:	pCMV6-Entry (PS100001)
E. coli Selection:	Kanamycin (25 ug/mL)
Cell Selection:	Neomycin



[View online »](#)

ORF Nucleotide Sequence:

>RR207264 representing NM_054002
 Red=Cloning site Blue=ORF Green=Tags(s)

TTTTGTAATACGACTCACTATAGGGCGGCCGGAATTCGTCGACTGGATCCGGTACCGAGGAGATCTGCC
 GCC**CGCATCGCC**

ATGGCTGGCGCGTGGACGGCCCCATCGGGATCCCCTCCAGACCACAGCAGCGACATCCTGAGCGGCC
 TGAATGAGCAGCGGACTCAGGGGCTGCTGTGTGATGTGGTATCTTGGTGGAGGGACGTGAGTCCCCAC
 GCATCGCTCGGTGCTGGCCGCTGCAGTCACTTCAAGAAGCTGTTCACTTCGGGCGCTGCTGGAC
 CAGCAGAAGCTGTACGAGATTGACTTTGTGAGCGCCGAGGCGCTGACGGCGCTCATGGACTTTGCCTACA
 CAGCCACGCTCACGGTCAGCACGGCCAATGTGGGCGACATCCTGAGTGGGCCCGGCTGCTGGAGATCCC
 GGCCGTGAGCCGAGTGTCACTGACCTGCTGGAGCGCCAGATTCTTGGCGCCGACGATGTGGGGATGCG
 GGCCAGCCGATGGGGCGGTCCACGGACCAGCGCACTGCTGCGTGCCAAGGAGTACCTGGAGTTCT
 TCCGCAGCAACCCATGAATAGCCTGCCCCCACTGCCTCCAGTGGCCTGGCTTCACTGCCCCGATGA
 CGACTGGATGCCACCAAGGAGGAGTGGCTGCCGCTGTGGCTGCTGTGGCTGCAGTGACTGCAATGGC
 TTAGACTTCTACGGCCAGGGCCTCCAGCTGATCGGCCCAACGGGCGATGGGGAGGAGGTGACAGCA
 CCCCAGGGCTGTGGCTGAGCGGGATGAAGATGCCCCGCTGGGGGCTCTTCCCGCTCCTACTGCCCC
 GCCAGCCACTACAGAACGGCCACTATGGCCGTGACGGGCGCAGCACTGGTGGAGGAAGAAGCAGTGGCG
 CTCTCTGAGGCCGCCCTGAGCCGGGTGACTCCCCGGCTTCTGTGAGTGTGCGAAGGCGAGGATG
 GGGATGCCGCTGATGTGGACGGGTAGCGGCCAGCACACTGCTACAGCAGATGATGTCGTCGTCGGGCCG
 GGCAGGGACAGTGTGAGGAGTCCCAGCCGACGACAAGGTGTGATGGACTACTACCTGAAGTACTTC
 AGCGGAGCCCATGAGGGTGTGTACCGGCCCTGGTACAGAAAGGGCGAGAAGAAAATCCGGGCCAAGG
 CCTTCCAGAAGTCCCAATTTGCGAGAAGGTGATTCAGGGCGCAGCAAGCTGCCCGGCACATCCGCAC
 GCACACGGCGAGAAGCCCTATGAGTGCAACATCTGCAAGGTCGCTTACCAGACAGGACAAGCTGAAG
 GTGCACATGCGGAAGCACACGGGTGAGAAACCGTACCTGTGCCAGCAGTGCAGCGCGCCTTCGCACACA
 ACTACGACCTGAAGAACCACATGCGGGTGCACACAGGGCTGCGACCGTACCAGTGTGACAGCTGCTGCAA
 GACCTTGTGCGCTCCGACCACCTGCACAGACCTCAAGAAGGACGGCTGCAATGGGGTCCCCTCGCGC
 CGTGGCCGCAAGCCCGCTGCGGGGTGTCCACCTGATGTCCTCCGGGGCTGGCGCACCCCCGGGC
 TCCCGGATGCTCCACGCAATGGCCAGGAGAAGCACTTTAAGGACGAGGAGGACGACGAGGAGGAGCCAG
 CCTTGACGGCTTGGCCCGCTGAATGTAGCGGGCAGTGGAGGAGACGATGGTGGGGTGGCCCCACGGT
 GCCGCCACTGAGGGTAACCTCGCAACC

ACGCGTACGCGGCCGCTCGAGCAGAACTCATCTCAGAAGAGGATCTGGCAGCAAATGATATCCTGGATT
 ACAAGGATGACGACGATAAGGTTTAA

Protein Sequence:

>RR207264 representing NM_054002
 Red=Cloning site Green=Tags(s)

MAGGVDGPIGIPFDHSSDILSGLNEQRTQGLLCDVVILVEGREFPTHRSVLAACSQYFKKLFSGAVVD
 QQNVYEIFDVSAEAL TALMDFAYTATLTVSTANVDILSAARLLEIPAVSRVCTDLLERQILAADDVGD
 GQPDGAGPTDQRNLLRAKEYLEFFRSNPMNSLPPTAFQWPFGSAPDDDLATKEAVAAVAVAAGDCNG
 LDFYGPAPPADRPPTGDGEEGDSTPGLWPERDEDAPPGLFPPTAPPATTQNGHYGRAGASTGEEEA
 VASEAAPEPGDSPGFLSGAAEGEDGDAADVGLAASTLLQMMSSVGRAGDSDEESRPDDKGVMDYYLKYF
 SGAHEGDVYPAWSQKGEKKIRAKAFQKCPICEKVIQAGKLPRIHRTHTGEKPYECNICKVRFTRQDKL
 VHMRTHTGEKPYLQCCGAAFAHNYDLKNHMRVHTGLRPYQDCSCKTFVRSDDLHRHLKKGDCNGVPSR
 RGRKPRVRGVPDPVPSGAGAPPGLPDAPRNGQEKHFKDEEDDEEASLDGLGRLNVAGSGGDDGAGGPTV
 AATEGNFAT

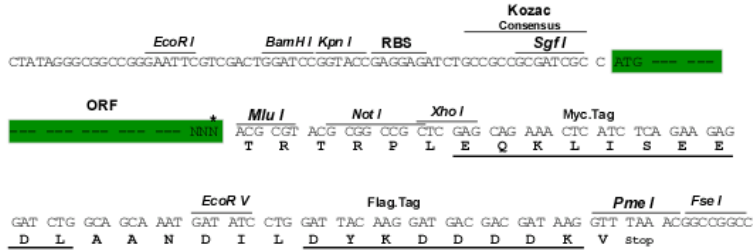
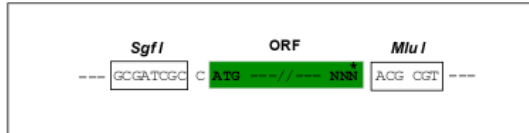
TRTRPLEQKLISEEDLAANDILDYKDDDDKV

Restriction Sites:

SgfI-MluI

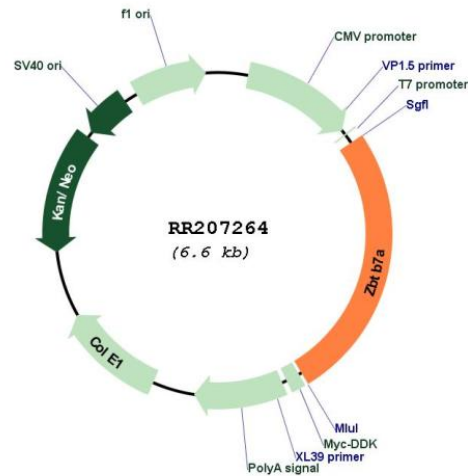
Cloning Scheme:

Cloning sites used for ORF Shutting:



* The last codon before the Stop codon of the ORF

Plasmid Map:



ACCN: NM_054002
 ORF Size: 1707 bp

OTI Disclaimer:	The molecular sequence of this clone aligns with the gene accession number as a point of reference only. However, individual transcript sequences of the same gene can differ through naturally occurring variations (e.g. polymorphisms), each with its own valid existence. This clone is substantially in agreement with the reference, but a complete review of all prevailing variants is recommended prior to use. More info
OTI Annotation:	This clone was engineered to express the complete ORF with an expression tag. Expression varies depending on the nature of the gene.
Components:	The ORF clone is ion-exchange column purified and shipped in a 2D barcoded Matrix tube containing 10ug of transfection-ready, dried plasmid DNA (reconstitute with 100 ul of water).
Reconstitution Method:	<ol style="list-style-type: none">1. Centrifuge at 5,000xg for 5min.2. Carefully open the tube and add 100ul of sterile water to dissolve the DNA.3. Close the tube and incubate for 10 minutes at room temperature.4. Briefly vortex the tube and then do a quick spin (less than 5000xg) to concentrate the liquid at the bottom.5. Store the suspended plasmid at -20°C. The DNA is stable for at least one year from date of shipping when stored at -20°C.
RefSeq:	NM_054002.1 , NP_446454.1
RefSeq Size:	2817 bp
RefSeq ORF:	1710 bp
Locus ID:	117107
UniProt ID:	Q9QZ48
Cytogenetics:	7q11
MW:	60.5 kDa
Gene Summary:	acts as a transcriptional repressor; may play a role in osteoclastogenesis [RGD, Feb 2006]