

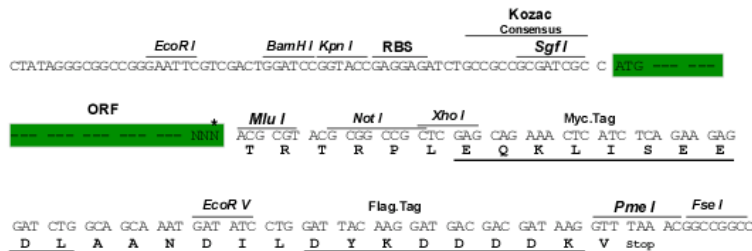
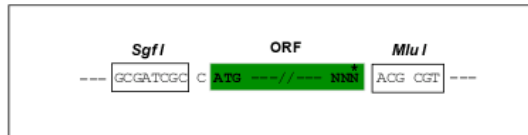
Product datasheet for RR207225

Il6r (NM_017020) Rat Tagged ORF Clone

Product data:

Product Type:	Expression Plasmids
Product Name:	Il6r (NM_017020) Rat Tagged ORF Clone
Tag:	Myc-DDK
Symbol:	Il6r
Synonyms:	IL6R1; Il6ra
Mammalian Cell Selection:	Neomycin
Vector:	pCMV6-Entry (PS100001)
E. coli Selection:	Kanamycin (25 ug/mL)
Restriction Sites:	Sgfl-MluI
Cloning Scheme:	

Cloning sites used for ORF Shuttling:



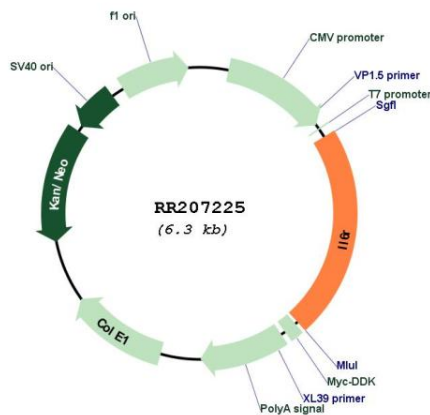
* The last codon before the Stop codon of the ORF

ACCN:	NM_017020
ORF Size:	1386 bp



[View online >](#)

OTI Disclaimer:	The molecular sequence of this clone aligns with the gene accession number as a point of reference only. However, individual transcript sequences of the same gene can differ through naturally occurring variations (e.g. polymorphisms), each with its own valid existence. This clone is substantially in agreement with the reference, but a complete review of all prevailing variants is recommended prior to use. More info
OTI Annotation:	This clone was engineered to express the complete ORF with an expression tag. Expression varies depending on the nature of the gene.
Components:	The ORF clone is ion-exchange column purified and shipped in a 2D barcoded Matrix tube containing 10ug of transfection-ready, dried plasmid DNA (reconstitute with 100 ul of water).
Reconstitution Method:	<ol style="list-style-type: none"> 1. Centrifuge at 5,000xg for 5min. 2. Carefully open the tube and add 100ul of sterile water to dissolve the DNA. 3. Close the tube and incubate for 10 minutes at room temperature. 4. Briefly vortex the tube and then do a quick spin (less than 5000xg) to concentrate the liquid at the bottom. 5. Store the suspended plasmid at -20°C. The DNA is stable for at least one year from date of shipping when stored at -20°C.
RefSeq:	<u>NM_017020.3, NP_058716.2</u>
RefSeq Size:	4529 bp
RefSeq ORF:	1389 bp
Locus ID:	24499
Cytogenetics:	2q34
MW:	50.4 kDa
Gene Summary:	alpha subunit of the interleukin 6 receptor complex [RGD, Feb 2006]

Product images:


Circular map for RR207225